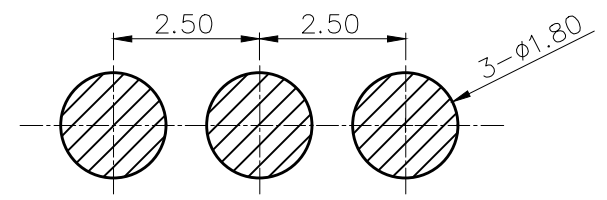
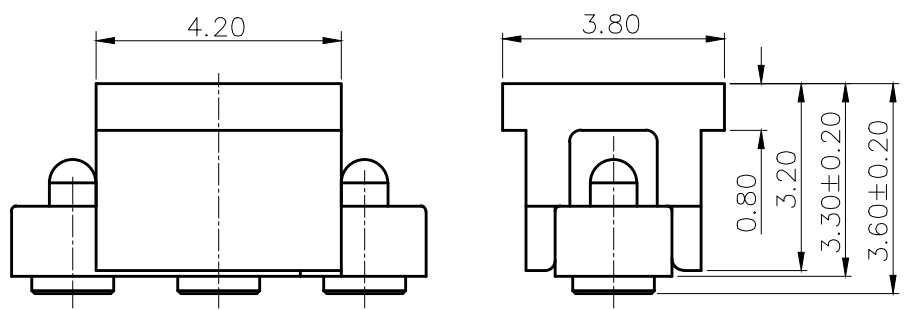
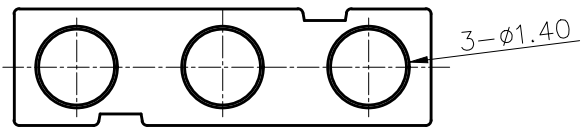
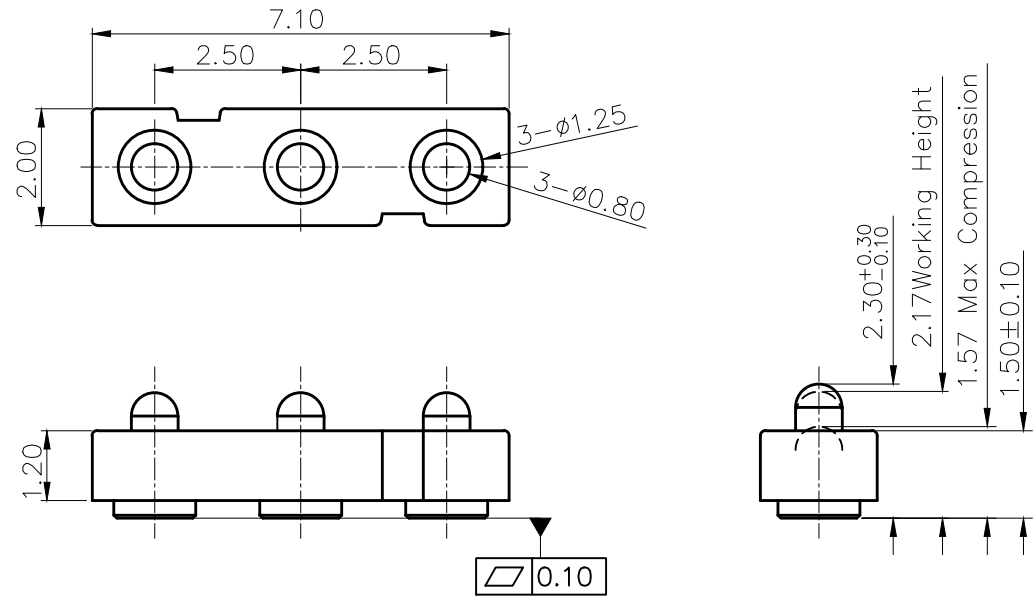


REVISIONS			
NO	DESCRIPTION	ECN NO	DATE
	INITIAL RELEASE	ECN-220130118	2013/01/31

Please Approve this Drawing

Date	
Signature	



RECOMMEND PCB LAYOUT

NOTES:

- Materials:
 - .Housing&Cap : Black HTN(UL94V-0)
 - .Plunger: Brass C3604
 - .Barrel: Brass C3604
 - .Spring: SUS304
- Plating:
 - .Contact Surface : 3 micro-inch minimum Au over 50~100 micro-inch Ni.
- Electrical
 - .Rated Current & Voltage : DC 12 V ; 1A
 - .Contact Resistance: 100 mohm maximum at Working Height(Quiescence)
- Mechanical
 - .Spring Force : 30g ~80g at Working Height
 - .Durability: 10,000 cycles(minimum)
- When the current is greater than 1A then need to increase the time delay circuit(3 second)
- To ensure the best usage, please operate it based on the working Height.
 - .Based on the Engineering Drawings, shall not exceed the maximum allowed compression.
- RoHs and HF compliant product.

DRAWN	Wang Shijun	SCALE:	8 : 1	UNIT	mm	DRAWING NO.	F1168AA02-03A250MR
CHECKED		SHEET:	1 of 1	PROJECT		TITLE: Pogo Pin Connector	
APPROVED		DATE:	2013.12.03	REV.	A.0		
THE UNMARKED TOLERANCE ARE AS BELOW :				C.C.P. (DG) CONTACT PROBES CO.,LTD. 东莞中探探针有限公司			
LENGTH		ANGLE		The information in this document is property of C.C.P company and should not be copied or reproduced in any other way, without written permission.			
0~6.0	±0.05mm	0.	±2.0°				
>6~30	±0.10mm	0.0	±1.0°				
>30~120	±0.15mm	0.00	±0.50°				