

Please Approve this Drawing

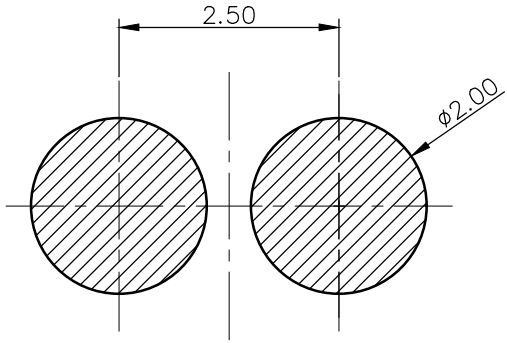
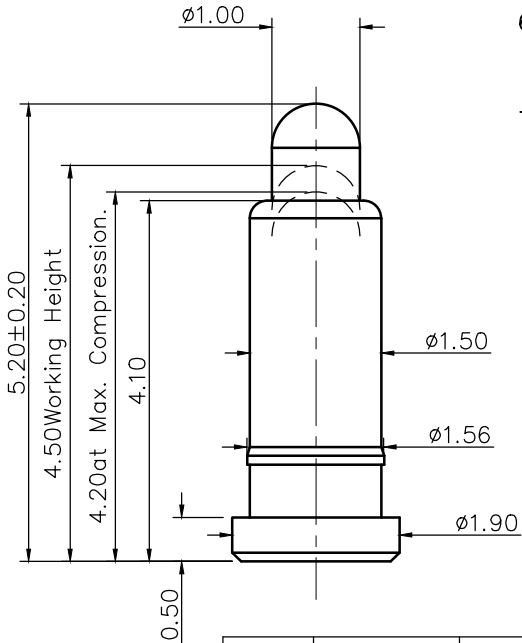
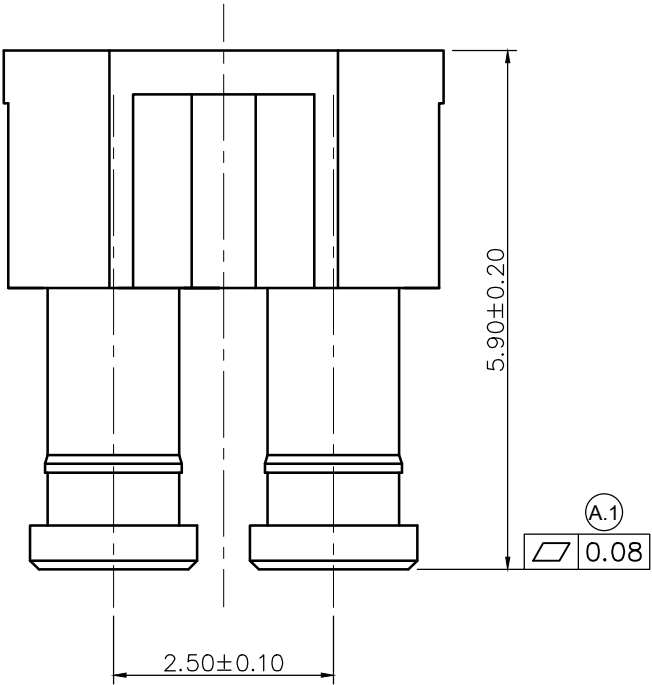
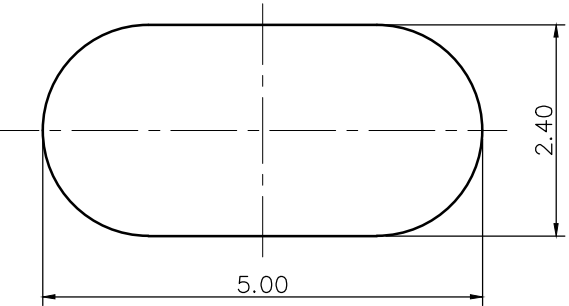
Date

Signature

REVISIONS			
NO	DESCRIPTION	ECN NO	DATE
A.0	INITIAL RELEASE	ECN-220130335	2013.03.28
A.1	变更平面度为0.08	ECN-2201510042	2015.10.22

NOTES:

- Materials:
 - .Cap: Black HTN(UL94V-0)
 - .Plunger: Brass C3604
 - .Barrel: Brass 3604
 - .Spring: SUS304
- Plating:
 - .Contact Surface :10 micro inch minimum
 - Au over 50~100micro inch Ni
- Electrical
 - .Rated Current & Voltage : DC 12 V ; 1A
 - .Contact Resistance:100 mohm maximum at Working Height(Quiescence)
- Mechanical
 - .Spring Force :60g±20g at Normal Working Height
 - .Durability:10,000 cycles(minimum)
- When the current is greater than 1A then need to increase the time delay circuit(3 second)
- To ensure the best usage, please operate it based on the working Height.
 - .Based on the Engineering Drawings, shall not exceed the maximum allowed compression.
- RoHs and HF compliant product.



RECOMMEND PCB LAYOUT
Layout Tolerance: ± 0.05mm

DRAWN	吴鹏	SCALE:	1 : 1	UNIT	mm	DRAWING NO.	F1835AA01-02A250CR
CHECKED		SHEET:	1 of 1	PROJECT		TITLE:	Pogo Pin Connector
APPROVED		DATE:	2015.10.22	VER.	A.1		

THE UNMARKED TOLERANCE ARE AS BELOW :

LENGTH		ANGLE	
0~6.0	±0.05mm	0.	±2.0°
>6~30	±0.10mm	0.0	±1.0°
>30~120	±0.15mm	0.00	±0.50°

C.C.P. (DG) CONTACT PROBES CO.,LTD.
东莞中探探针有限公司

The information in this document is property of C.C.P company and should not be copied or reproduced in any other way, without written permission.