

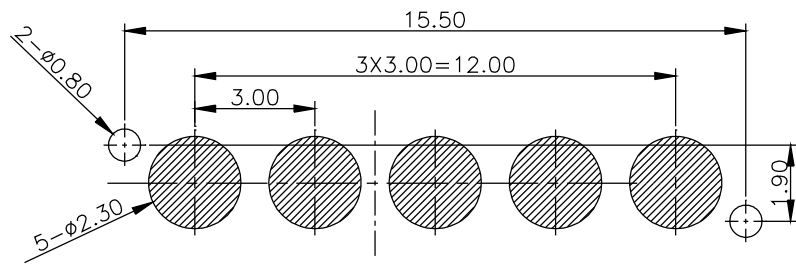
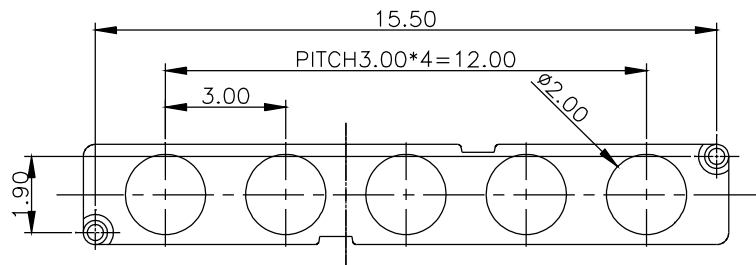
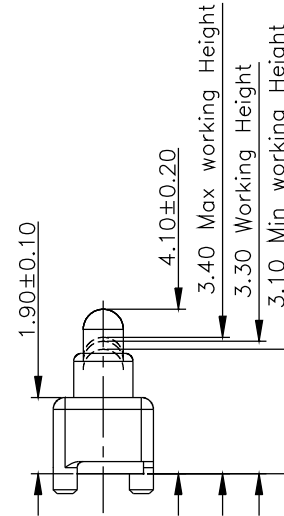
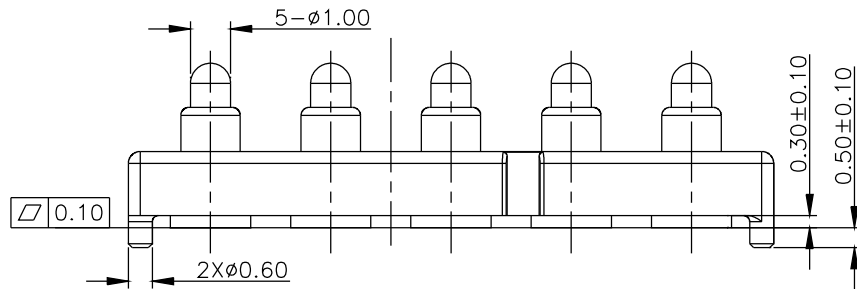
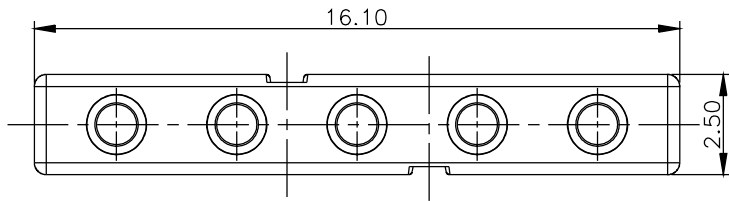
Please Approve this Drawing

Date	
Signature	

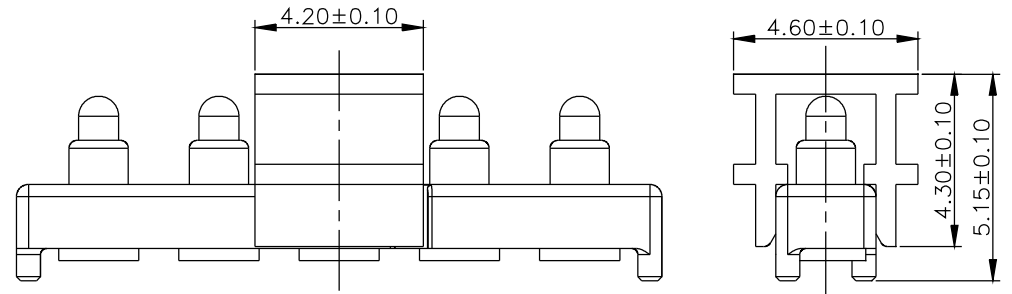
REVISIONS			
NO.	DESCRIPTION	ECN NO.	DATE
A.0	INITIAL RELEASE	ECN-2201511058	2015.11.20

NOTES:

- Materials:
 - .Housing : Black HTN(UL94V-0)
 - .Plunger: Brass C3604
 - .Barrel: Brass C3604
 - .Spring: SUS304
- Plating:
 - .Contact Surface : Plunger and Barrel: 3 micro inch minimum Pd over6~12 micro inchPdNi over 30~80 micro inch Ni.
- Electrical
 - .Rated Current & Voltage : DC 12 V ; 1A
 - .Contact Resistance:50 mohm maximum at Working Height(Quiescence)
- Mechanical
 - .Spring Force :80±20%g at Normal Working Height
 - .Durability:10,000 cycles(minimum)
- To avoid arcing issue, The adaptor start to power supply after connector mated fully.
- To ensure the best usage, please operate it based on the working Height.
- Harmful material control please follow DOC. NO. "DQ03050" .



RECOMMEND PCB LAYOUT(TOP VIEW)
Layout Tolerance: ± 0.05mm



DRAWN	吴鹏	SCALE	1 : 1	UNIT	mm	DRAWING NO.	F1853AA01-05H300MR
CHECKED		SHEET	1 of 1	PROJECT		TITLE	5 PIN POGO PIN
APPROVED		DATE	2015.11.20	VER.	A.0		

THE UNMARKED TOLERANCE ARE AS BELOW :

LENGTH		ANGLE	
0~6.0	±0.05mm	0.	±2.0°
>6~30	±0.10mm	0.0	±1.0°
>30~120	±0.15mm	0.00	±0.50°

C.C.P. (DG) CONTACT PROBES CO.,LTD.
东莞中探探针有限公司

The information in this document is property of C.C.P company and should not be copied or reproduced in any other way, without written permission.