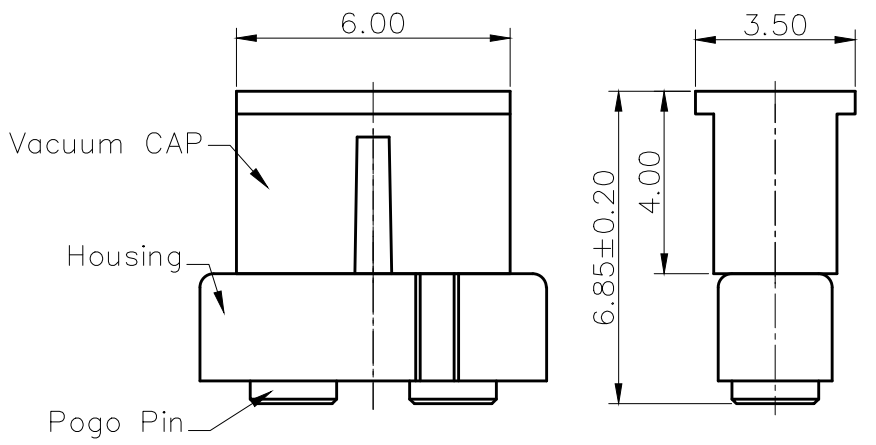


RECOMMEND PCB LAYOUT
Layout Tolerance: $\pm 0.05\text{mm}$



REVISIONS			
NO	DESCRIPTION	ECN NO	DATE
	INITIAL RELEASE	ECN-9406012	2006.03.05
△	Housing&Cap material : PA9T to HTN	ECN-220120510002	2012.05.10

NOTES:

- Materials:
 - .Housing&Cap : Black HTN(UL94V-0)△
 - .Plunger: Brass C3604
 - .Barrel: Brass C3604
 - .Spring: SUS304
- Plating:
 - .Contact Surface : 10 micro-inch minimum Au over 50~100 micro-inch Ni.
- Electrical
 - .Rated Current & Voltage : DC 12 V ; 1A
 - .Contact Resistance: 50 mohm maximum at Working Height(Quiescence)
- Mechanical
 - .Spring Force : $110 \pm 20\%$ g at Normal Working Height
 - .Durability: 10,000 cycles(minimum)
- To avoid arcing issue, The adaptor start to power supply after connector mated fully
- To ensure the best usage, please operate it based on the working Height.
 - .Based on the Engineering Drawings, shall not exceed the maximum allowed compression.
- RoHs compliant product.

Please Approve this Drawing	
Date	
Signature	

DRAWN	SUN	SCALE:	4 : 1	UNIT	mm	DRAWING NO.	N005M4-02C350MR
CHECKED		SHEET:	1 of 1	PROJECT		TITLE: Pitch 3.5mm Height 5.8mm 2-Pos Pogo Pin Connector	
APPROVED		DATE:	2012.05.10	VER.	A.1		
THE UNMARKED TOLERANCE ARE AS BELOW :				C.C.P. (DG) CONTACT PROBES CO.,LTD. 东莞中探探针有限公司			
LENGTH		ANGLE		The information in this document is property of C.C.P company and should not be copied or reproduced in any other way, without written permission.			
0~6.0	±0.05mm	0.	±2.0°				
>6~30	±0.10mm	0.0	±1.0°				
>30~120	±0.15mm	0.00	±0.50°				