

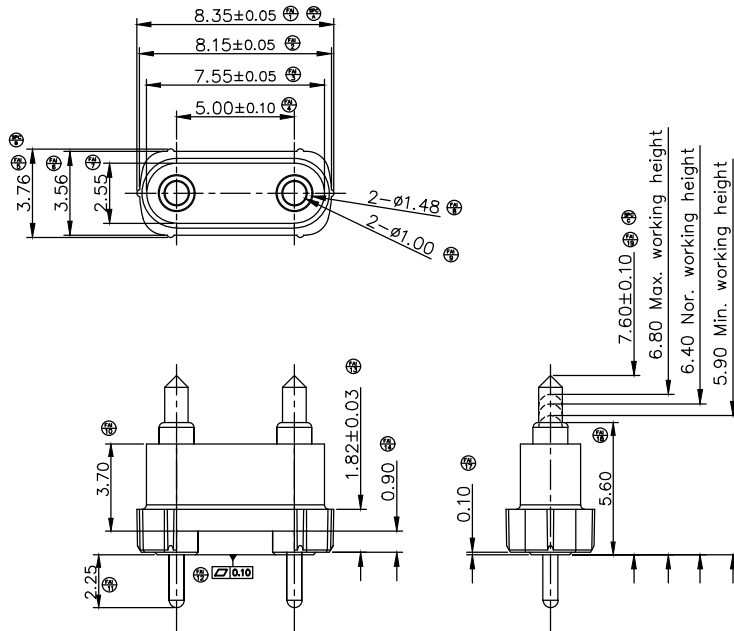
Please Approve this Drawing

Date

Signature

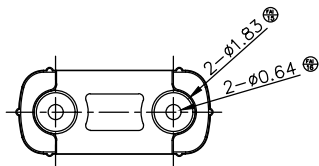
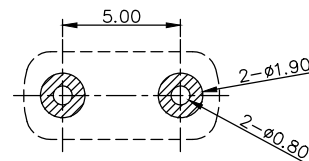
REVISIONS

NO	DESCRIPTION	ECN NO	DATE
	INITIAL RELEASE	ECN-2201407038	2014.07.11



NOTES:

- Materials:
 - .Housing : LCP+30%GF(Color:Black)(UL94V-0)
 - .Plunger : Brass C3604
 - .Barrel : Brass C3604
 - .Spring : SUS304
- Plating:
 - .Plunger :10 micro-inch minimum Au over 50~100 micro-inch Ni.
 - .Barrel :10 micro-inch minimum Au over 50~100 micro-inch Ni.
- Electrical
 - .Rated Current & Voltage : DC 12 V ; 1A
 - .Contact Resistance:50 mohm maximum at Working Height(Quiescence)
- Mechanical
 - .Spring Force :120g \pm 20% at 6.40 Working Height
 - .Durability:10,000 cycles(minimum)
 - .To ensure the best usage, please operate it based on the working range.
- .Harmful material control please follow DOC. NO."DQ03050"
- Mark $\text{\textcircled{M}}$ is critical dimension for process control.
- Mark $\text{\textcircled{M}}$ is for FAI (first article inspection) purpose only.



DRAWN	Qin wen jiao	SCALE:	4 : 1	UNIT	mm	DRAWING NO.	P2388MP10-02G500HR
CHECKED		SHEET:	1 of 1	PROJECT		TITLE:	Pogo Pin Connector
APPROVED		DATE:	2014.07.11	VER.	A.0		
THE UNMARKED TOLERANCE ARE AS BELOW :				C.C.P. (DG) CONTACT PROBES CO.,LTD. 东莞中探探针有限公司			
LENGTH		ANGLE		The information in this document is property of C.C.P company and should not be copied or reproduced in any other way, without written permission.			
0~6.0	$\pm 0.05\text{mm}$	0	$\pm 2.0^\circ$				
>6~30	$\pm 0.10\text{mm}$	0.0	$\pm 1.0^\circ$				
>30~120	$\pm 0.15\text{mm}$	0.00	$\pm 0.50^\circ$				