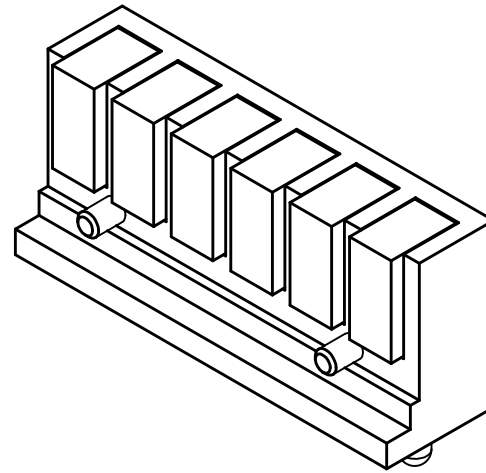


Please Approve this Drawing

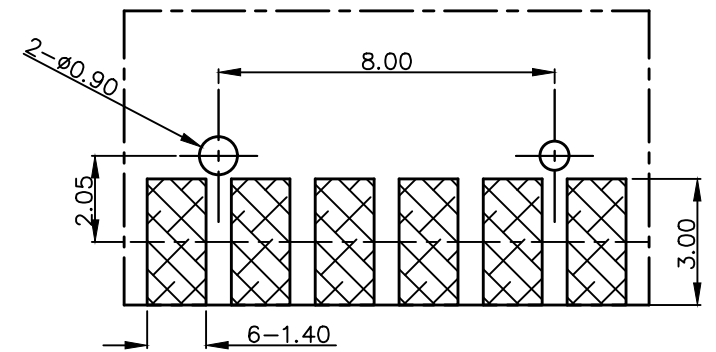
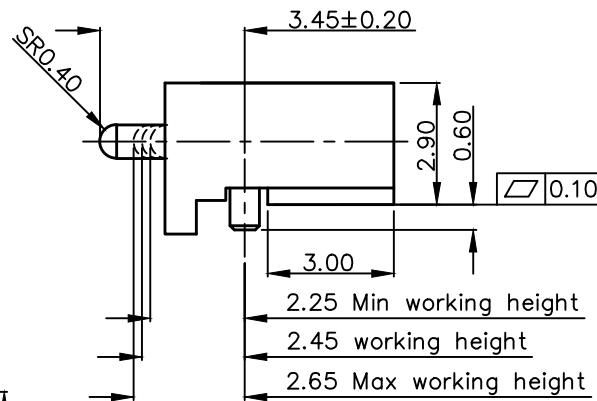
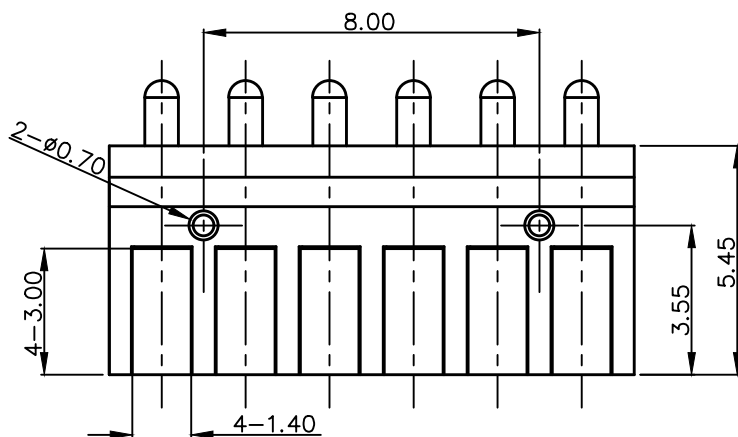
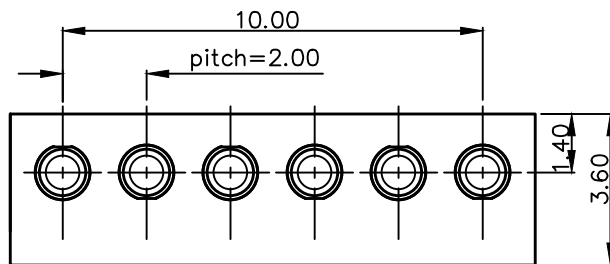
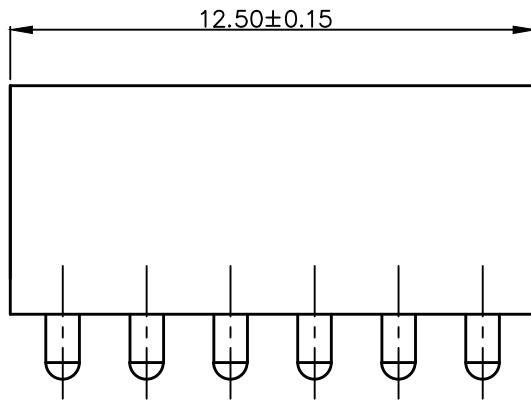
Date	
Signature	

REVISIONS			
LTR	DESCRIPTION	ECN No.	DATE
	RELEASE	ECN-2201501027	2015.01.22



NOTES:

- Materials:
  - .Housing: Black HTN(UL94V-0)
  - .Plunger&Barre: Brass C3604
  - .Spring: SUS304
- Plating:
  - .Per pin Contact Surface :10 micro-inch minimum Au over 50~100 micro-inch Ni.
- Electrical
  - .Rated Current & Voltage : DC 12 V ; 2A
  - .Contact Resistance: 50 mohm maximum at Working Height(Quiescence)
- Mechanical
  - .Per pin Spring Force: 70±20%g . at Normal Working height
  - .Durability:10,000 cycles(minimum)
- .To avoid arcing issue, The adaptor start to power supply after connector mated fully
- .To ensure the best usage, please operate it based on the working Height.
- .Based on the Engineering Drawings, shall not exceed the maximum allowed compression.
- .Harmful material control please follow DOC.NO. "DQ03050"



RECOMMEND PCB LAYOUT  
Layout Tolerance: ± 0.05mm

DRAWN	吴鹏	SCALE:	3 : 1	UNIT	mm	DRAWING NO.	P2526MR01-06F200HR
CHECKED		SHEET:	1 : 1	PROJECT		TITLE:	Pitch 2.00 mm Height 6 - Pos Pogo Pin Connector
APPROVED		DATE:	2015.01.22	VER.	A.0		

THE UNMARKED TOLERANCE ARE AS BELOW :

LENGTH (尺寸)		ANGLE (角度)	
0~6.0	±0.05mm	0.	±2.0°
>6~30	±0.10mm	0.0	±1.0°
>30~120	±0.15mm	0.00	±0.50°

C.C.P. (DG) CONTACT PROBES CO.,LTD.  
东莞中探探针有限公司

The information in this document is property of C.C.P company and should not be copied or reproduced in any other way, without written permission.