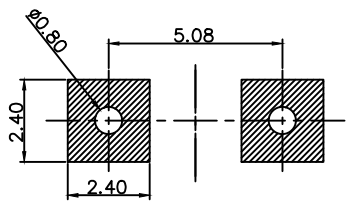
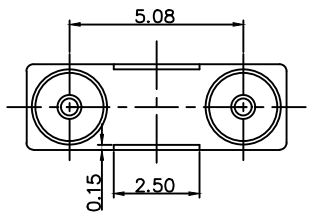
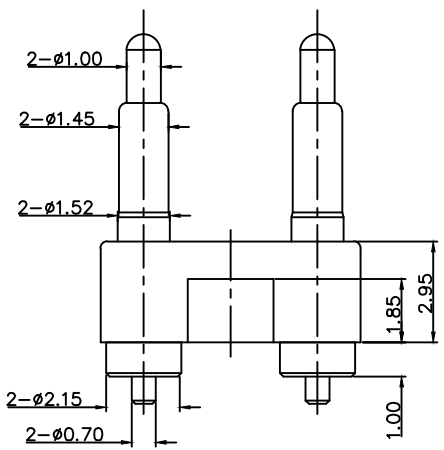
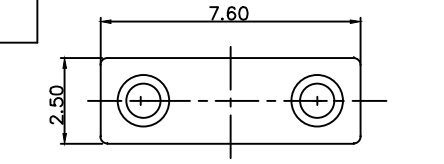


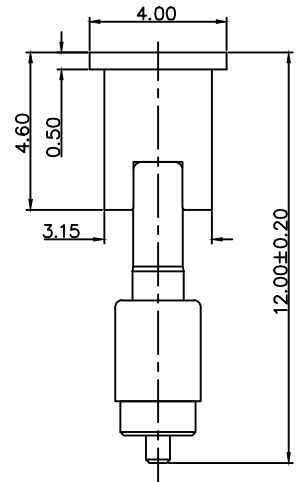
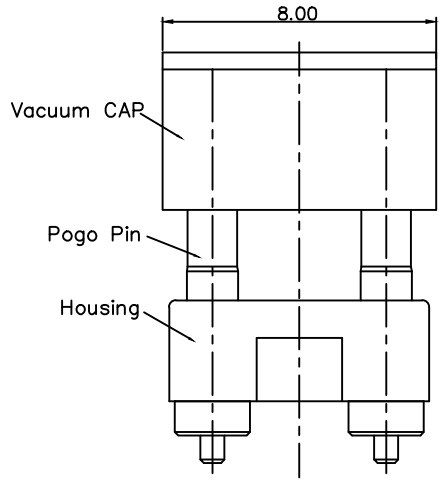
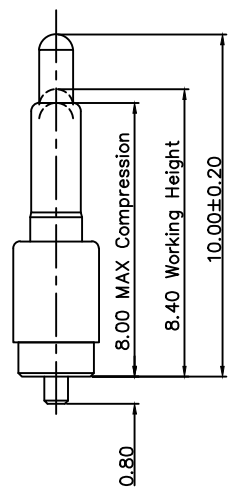
Please Approve this Drawing

Date	
Signature	

REVISIONS			
NO.	DESCRIPTION	ECN NO.	DATE
A.0	NEW RELEASE	ECN-2201510026	2015.10.14



RECOMMEND PCB LAYOUT(TOP VIEW)
Layout Tolerance: ± 0.05mm



- NOTES:
- Materials:
 - .Cap&Housing: Black HTN(UL94V-0)
 - .Plunger: Brass C3604
 - .Barrel: Brass C3604
 - .Spring: SUS304
 - Plating:
 - .Plunger: 10 micro-inch minimum Au over 50~100 micro-inch nickel
 - .Barrel: 10 micro-inch minimum Au over 50~100 micro-inch nickel
 - Electrical
 - .Rated Current & Voltage : DC 12 V ; 1A Max
 - .Contact Resistance: 50 mohm maximum at Working Height(Quiescence)
 - Mechanical
 - .Spring force: 100g±20% at working height
 - .Durability: 10,000 cycles(minimum)
 - To ensure the best usage, please operate it based on the working Height.
.Based on the Engineering Drawings, shall not exceed the maximum allowed compression.
 - Harmful material control please follow DOC.NO. "NO.DQ03050"

DRAWN	Yangliwei	SCALE:	10 : 1	UNIT	mm	DRAWING NO.	P2780MF01-02A508MR
CHECKED		SHEET:	1 OF 1	PROJECT		TITLE.	Pogo Pin Connector
APPROVED		DATE:	2015.10.14	VER.	A.0		
THE UNMARKED TOLERANCE ARE AS BELOW :						C.C.P. (DG) CONTACT PROBES CO.,LTD.	
LENGTH		ANGLE		东莞中探探针有限公司			
0~6.0	±0.05mm	0.0	±2.0°	The information in this document is property of C.C.P company and should not be copied or reproduced in any other way, without written permission.			
>6~30	±0.10 mm	0.0	±1.0°				
>30~120	±0.15mm	0.00	±0.50°				