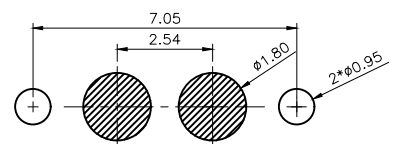
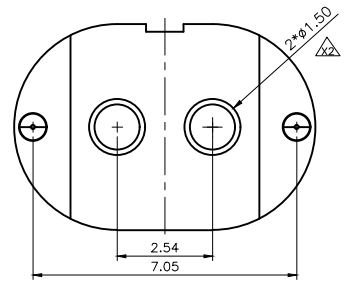
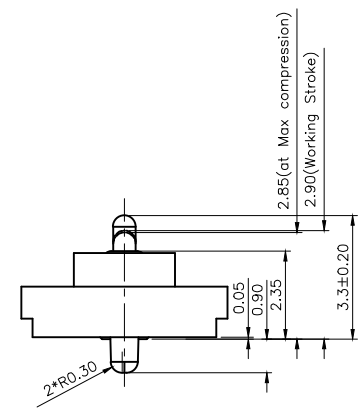
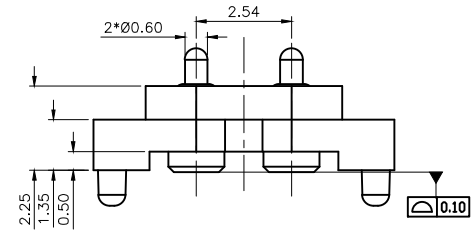
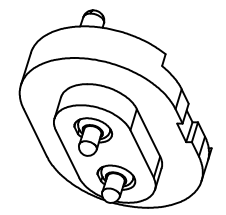
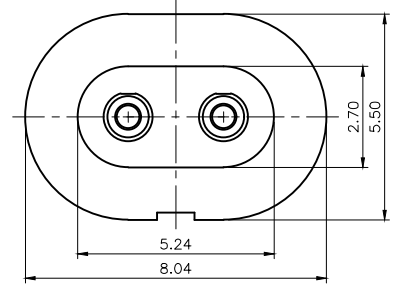


Please Approve this Drawing

|           |  |
|-----------|--|
| Date      |  |
| Signature |  |

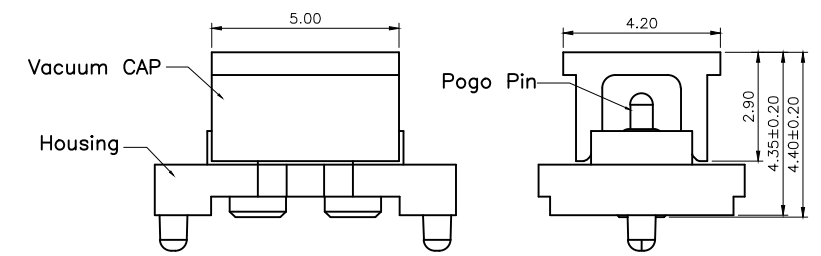
| REVISIONS |                        |                |            |
|-----------|------------------------|----------------|------------|
| NO.       | DESCRIPTION            | ECN NO.        | DATE       |
| A.1       | 更换塑胶型号及颜色 $\Delta$     | DCN-2201505008 | 2015.05.06 |
| A.2       | 取消加针尾PIN               | ECN-2201505032 | 2015.05.15 |
| A.3       | SUS304变更为SWP镀金         | ECN-2201505058 | 2015.05.27 |
| A.4       | 依客户要求修改尾PIN直径 $\Delta$ | ECN-2201507005 | 2015.07.07 |



RECOMMEND PCB LAYOUT  
Layout Tolerance: ± 0.05mm

NOTES:

- Materials:  
Plunger&Barrel:Brass3604  
Spring:SWP  
CAP:LCP,UL94V-0 ,Black  
Housing:LCP(E130I);UL94V-0 ,CREAM  $\Delta$
- Plating  
Plunger:100micro-inch minimum Au over 50~100 micro-inch Ni over 1 micro-inch minimum Cu  
Barrel:10micro-inch minimum Au over 50~100 micro-inch Ni over 1 micro-inch minimum Cu  
Spring: 2 micro-inch minimum Au over 50~100 micro-inch Ni
- Electrical  
Rated Current&Voltage:DC 12V:1A  
Contact Resistance:50mΩ maximum at Working Height(Quiescence)
- Mechanical  
Spring Force:100g±20g at Working Height  
Durability:10,000 cycles(minimum)
- To ensure the best usage, please operate it based on the working Height Based on the Engineering Drawings, shall not exceed the maximum allowed compression.
- Harmful material control please follow DOC NO. "DQ03050"



|                                       |          |        |            |  |     |             |                    |
|---------------------------------------|----------|--------|------------|--|-----|-------------|--------------------|
| DRAWN                                 | 周瑜       | SCALE: | 1 : 1      | UNIT   | mm  | DRAWING NO. | P3013MF01-02F254MR |
| CHECKED                               |          | SHEET: | 1 OF 1     | PROJECT  |     | TITLE.      | Pogo Pin Connector |
| APPROVED                              |          | DATE:  | 2015.07.07 | VER.   | A.4 |             |                    |
| THE UNMARKED TOLERANCE ARE AS BELOW : |          |        |            | C.C.P. (DG) CONTACT PROBES CO.,LTD.  |     |             |                    |
| LENGTH                                |          | ANGLE  |            | 东莞中探探针有限公司   |     |             |                    |
| 0~6.0                                 | ±0.05mm  | 0.     | ±2.0°      | The information in this document is property of C.C.P company and should not be copied or reproduced in any other way, without written permission. |     |             |                    |
| >6~30                                 | ±0.10 mm | 0.0    | ±1.0°      |  |     |             |                    |
| >30~120                               | ±0.15mm  | 0.00   | ±0.50°     |  |     |             |                    |