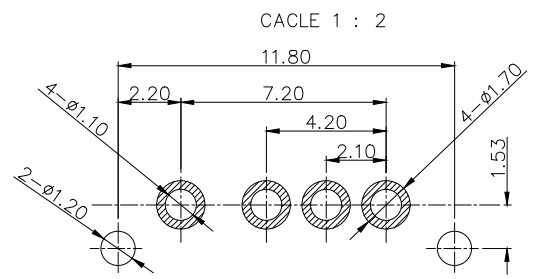
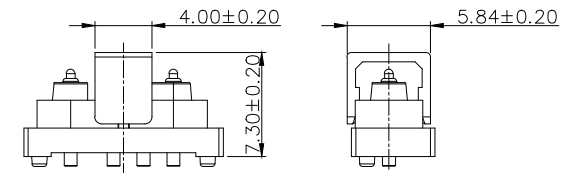
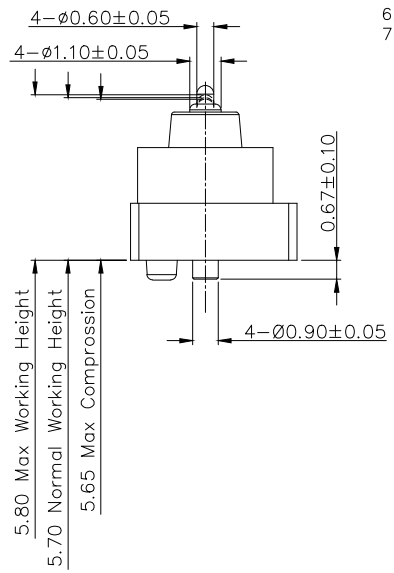
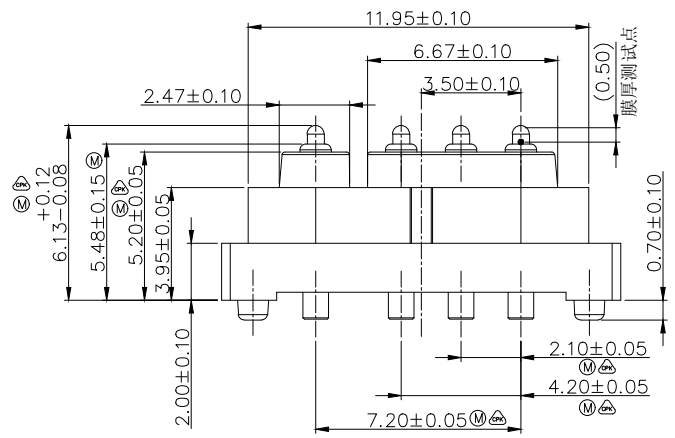
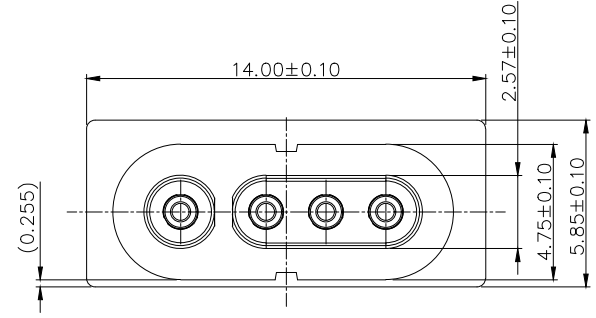


REVISIONS (修正)			
NO. (序号)	DESCRIPTION (描述)	ECN NO. (变更号)	DATE (日期)
A.0	NEW RELEASE	ECN-2201606017	2016.06.15

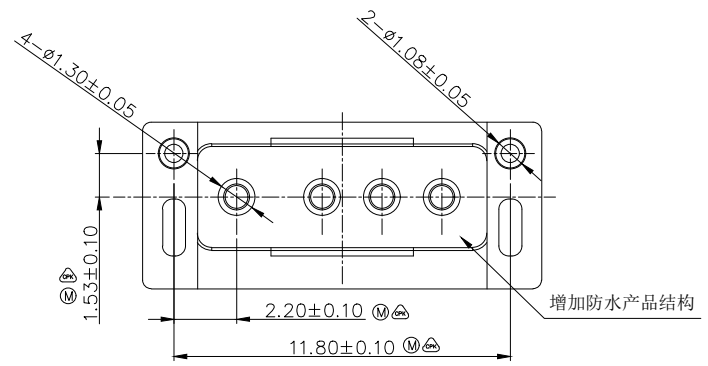
Please Approve this Drawing

Date	
Signature	

- 备注:
- 材质:
    - . 胶芯: PA9T+30%GF (UL94V-0)BLACK(黑色)
    - . Cap: LCP+30%GF (UL94V-0),BLACK(黑色)
    - . 针轴&针管: 黄铜C3604, 弹簧&钢珠: 不锈钢
    - . 防水胶: 环氧树脂 EP425
  - 电镀:
    - 针轴: 镀铜锡锌40-80 micro-inch 后最少镀金50 micro inch
    - 针管: 镀镍50~100 micro-inch 后最少镀金10 micro inch
  - 电气特性:
    - . 电压&电流: 直流电12 伏;1 安
    - . 接触阻抗: 在工作高度时最大阻抗50 毫欧 (静态)
  - 机械特性:
    - . 弹力: 在工作高度的弹力50g±15g, 寿命: 10, 000次(最少)
  - 为了确保产品的最佳性能, 请在工作高度范围内使用根据工程图纸, 不得超过允许的最大压缩行程使用
  - 有害物质管控请遵循文件NO. "DQ03050"
  - 标有Ⓜ为重点管控尺寸, 标有Ⓢ为CPK管控尺寸.



RECOMMEND PCB LAYOUT(TOP VIEW)  
Layout Tolerance: ± 0.05mm



DRAW (设计)	John_Pan	SCALE (比例)	10 : 1	UNIT (单位)	mm	DRAWING NO. (图号)	P3613MP05-04A210MR		
CHECK (校对)		SHEET (页数)	1 of 1	PROJECT (视图)		MATERIAL (材质)	See Notes		
AUDIT (审核)		COUNTER SIGN (会签)				DATE (日期)	2016.06.15	REV	A.0
APPROVE (核准)		PLATE (镀层)			See Notes	TITLE (品名)	4Pin 2.10mm Pitch Pogo Pin Connector		

THE UNMARKED TOLERANCE ARE AS BELOW :  
(未标记的公差)

LENGTH (尺寸)	ANGLE (角度)		
0~6.0	±0.05mm	0.	±2.0°
>6~30	±0.10mm	0.0	±1.0°
>30~120	±0.15mm	0.00	±0.50°

**C.C.P. (DG) CONTACT PROBES CO.,LTD.**  
**东莞中探探针有限公司**

The information in this document is property of C.C.P company and should not be copied or reproduced in any other way, without written permission.