

4

3

2

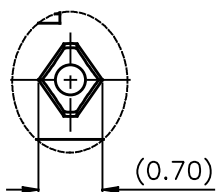
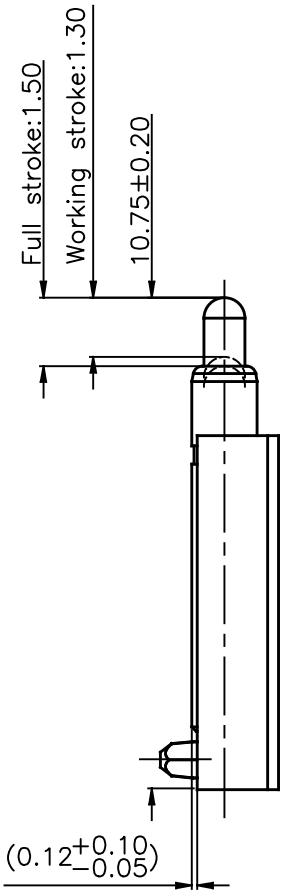
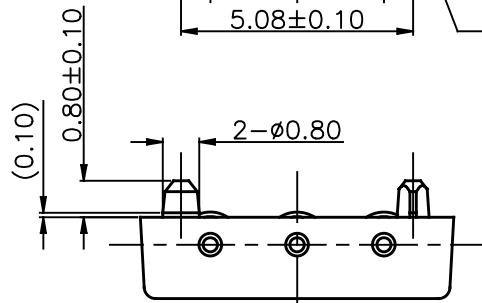
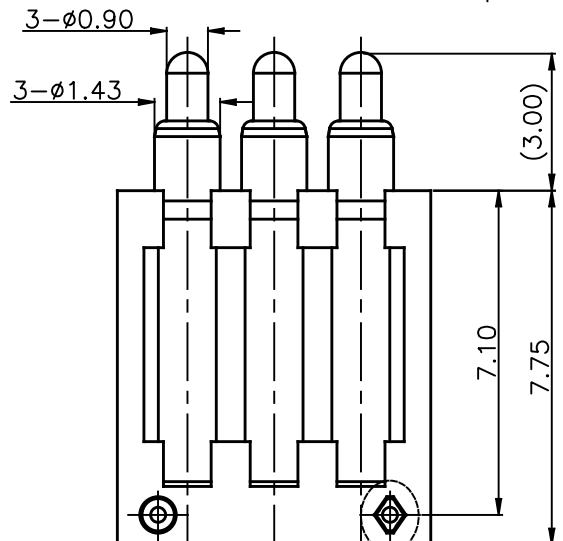
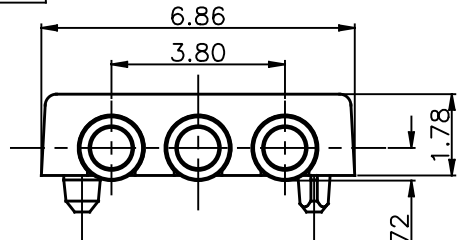
1

Please Approve this Drawing

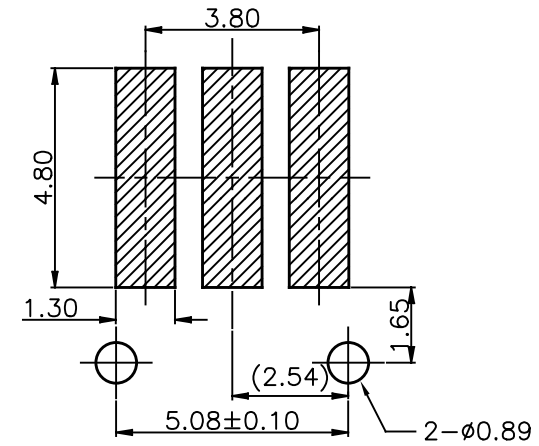
Date

Signature

REVISIONS			
NO.	DESCRIPTION	ECN NO.	DATE
	INITIAL RELEASE	ECN-2201402008	2014.02.27



Detail A
Scale 2:1



RECOMMEND PCB LAYOUT
Layout Tolerance: ±0.05

NOTE

1. Material
Housing: Black LCP(UL94V-0)
Plunger: Brass 3604
Barrel: Brass 3604
Spring: SUS304
2. Plating
Plunger: 10 micro-inch minimum Au over 50~100 micro-inch nickel
Barrel: 10 micro-inch minimum Au over 50~100 micro-inch nickel
3. Electrical
Rated current & voltage: DC 12V; 1.0A Max.
Contact resistance: 50 mohm maximum at working stroke(quiescence)
4. Mechanical
Spring force: 110g±20% at 1.30 mm working stroke
Durability: 10,000 cycles(minimum)
5. To ensure the best usage, please operate it based on the working stroke
Based on the engineering drawings, shall not exceed the maximum allowed compression
6. Harmful material control please follow DOC. NO. "DQ03050"

DRAWN	linyushou	SCALE:	1 : 1	UNIT	mm	DRAWING NO.	R1332AA01-03B190RR
CHECKED		SHEET:	1 of 1	PROJECT		TITLE:	Pogo Pin Connector
APPROVED		DATE:	2014.02.27	VER.	A.0		
THE UNMARKED TOLERANCE ARE AS BELOW :				C.C.P. (DG) CONTACT PROBES CO.,LTD.			
LENGTH		ANGLE		东莞中探探针有限公司			
0~6.0	±0.05mm	0.	±2.0°	The information in this document is property of C.C.P company and should not be copied or reproduced in any other way, without written permission.			
>6~30	±0.10mm	0.0	±1.0°				
>30~120	±0.15mm	0.00	±0.50°				

4

3

2

1