

Pogo Pin Connectors

Single Pins
Connector Modules
Customized Connectors



C.C.P. CONTACT PROBES

C.C.P. Contact Probes Co., Ltd. is a leading global manufacturer of Contact Probes, Pogo Pins, Testprobes, Springloaded Connectors, and Crown Spring Connectors.

In 1986 we began as a specialized provider of test probes and socket auxiliary solutions and slowly expanded our product portfolio in related industries such as electronic components manufacturing. Among our customers are renowned brands like Apple and Amazon and our products are revered by our customers for their exceptional reliability and superior quality.

Our research and development teams are continuously improving our existing products and bringing new innovations to the market to meet the growing demands of our clients. Since 2001 CCP Contact Probes has been a public traded company listed on the Taiwan Stock Exchange. Today CCP has subsidiaries in the United States, China, Germany, India, Japan and Singapore, meeting the needs of our customers around the world.

ABOUT US

Introduction

Selected Customers

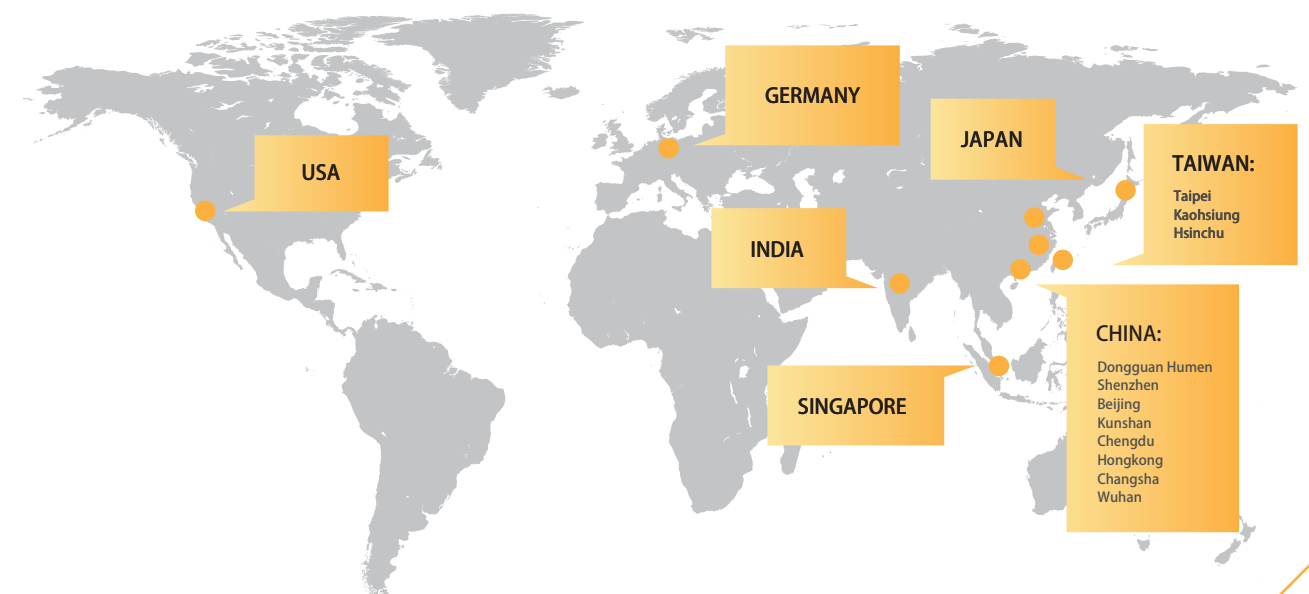
FOXCONN

Google



ADVANTEST

Locations






ABOUT US

History

History

2018	CCP Germany, Singapore & India Established
2016	High Current Connector Product Line
2014	CCP USA Established
2003	Listed on Taiwan Stock Market (TW. 6217))
2002	Commercial Connector Product Line
2001	CCP Dongguan Factory Established
1986	CCP Established/ Testing Product Line

Company Culture

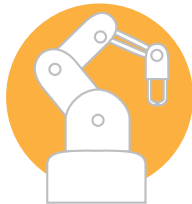
	Yearly Home Visit
	Employee's Children Summer Camp
	Tuition Subsidy for Employee's Children

ABOUT US

Advantages



Over 30 Years of Product Development Experience
Servicing Industry-leading Clients

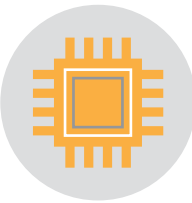


Agile and Flexible Design Process with Self-owned
Turning and Plating Factory

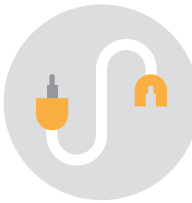


A Proven Track-record of Reliability, an Industry Certified Quality
Management System, and State-of-the-art Production Equipment

Product Lines



Testing
Solutions



Commercial
Connector Solutions

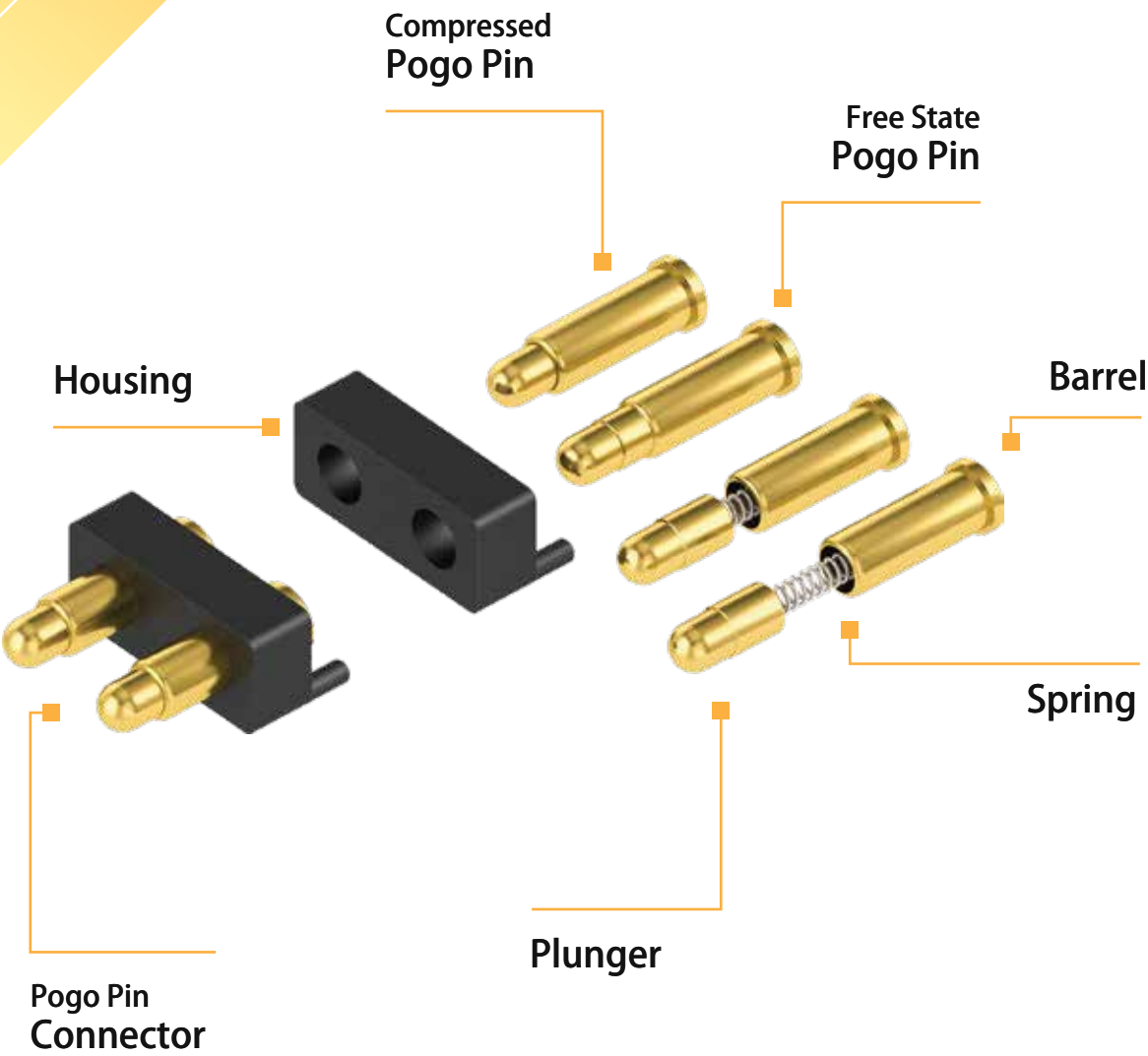


High Current
Connector Solutions



Industrial
Connector Solutions

POGO PIN INTRODUCTION



WHEN TO USE POGO PINS

Advantages



IMPROVED USER EXPERIENCE
Easy to plug-in, no accidental rip off of the cable.



STABLE CURRENT FLOW
Different pogo designs maximize the stability of the current flow, by increasing the number of contact points inside the pin.



SMALL VOLUMES POSSIBLE
Pogo pins are produced with high precision turning machines and don't require a mold as it is the case for other connectors that are using a stamping process.



LIMITED SPACE & HIGH CURRENT
The trend towards miniaturization in the electronics industry is continuing. No other connector has a better space to current ratio as a pogo pin.



SIMPLIFY ASSEMBLY AND SAFE COST
The complexity of today's electronics increases the assembly costs and difficulty significantly. Pogo pins not just reduce the manual labor time for inserting cables or pins, they also open up new design and arrangement options for industrial designers and engineers.



HIGH TOLERANCE
Small errors in the production often lead to unstable connectors as they are not properly touching the surface of their counterpart. Pogo pins allow extremely high tolerances in the production and thereby increasing the likelihood for errors.



LONG LIFE-TIME
Pogo pins have a far superior life-time as compared to other connector types as they minimize the mechanical strain on the parts.

The current a pogo pin can carry depends largely on 3 factors:



Number of Contact Points

The ball design maximizes the number of contact points, thereby allowing a higher and more stable flow of current.



Spring Force

The higher the spring force, the better the plunger is pressed against the wall of the barrel, allowing a stable current flow.

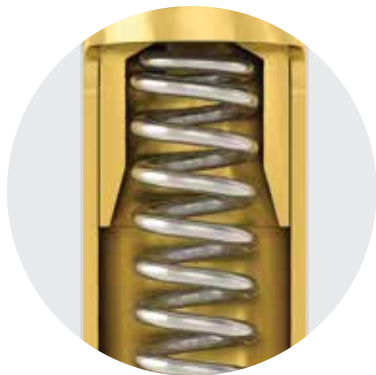


Material

Different material types can heavily influence the conductivity of the pin, but also the roughness is important to increase the current flow.

BLACK DRILL

The drilled plunger creates extra space for the spring and allowing shorter pogo pin designs.



Pin Length: \approx 2.5 mm
Current: 1 A

BIAS TAIL

The biased tail of the plunger creates a lateral force and better contact.



Pin Length: \approx 3.5 mm
Current: 2 A

BALL

The ball inside stabilizes the contacting areas for a better performance.



Pin Length: \approx 4.5 mm
Current: 3~5 A

Housing

Polyoxyethylen (Standard)
PBT Polybutylene terephthalate
LCP Liquid-crystal polymers
HTN Polyphthalamide
PA10T

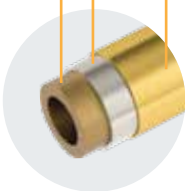
Ball

Stainless Steel

Plunger

Brass (Standard)
Beryllium Copper
Phosphor Bronze
SK4

Surface Plating
Base Plating
Base



Spring

Stainless Steel

Barrel

Brass (Standard)
Beryllium Copper
Phosphor Bronze

When should you use which surface plating?

Plating	Hardness (HV)	Function	Color
Gold	200	Low resistance	Gold
Super AP	400	Superior corrosion resistance, low electrical resistance	Silver
Nickel	150-200	Low cost, corrosion resistant	Silver
Palladium-Nickel	330-380	Improved signal transmission	Silver
Red Brass (CuSnZn)	600	Replace Nickel	Silver
Palladium Cobalt	450-600	Replace Pd-Ni	Silver
Palladium Cobalt	600-800	Black color requirement	Black

CCP PLATING TECHNOLOGY

Industry-Leading Anti-Corrosion


CCP's Super AP plating is the gold-standard of the industry. Its superior composition makes it extremely resistant to electrolytic corrosion while maintaining a very low resistance. The perfect solution for any kind electrical application.

2X

NaCl


more resistant to Salt Spray

5X




more resistant to Artificial Perspiration

30X

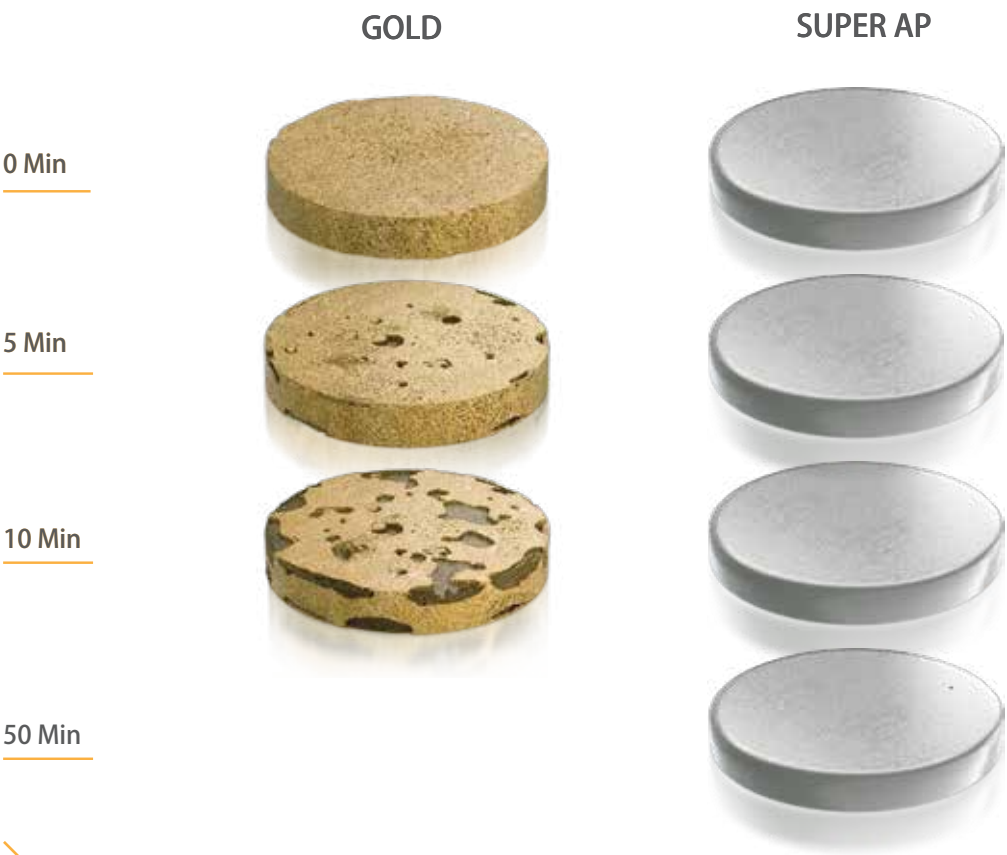


more resistant to Electrolysis



Nickel-Free

Comparison of Gold and Super AP Plating:



CCP PLATING TECHNOLOGY

Industry-Leading Anti-Corrosion

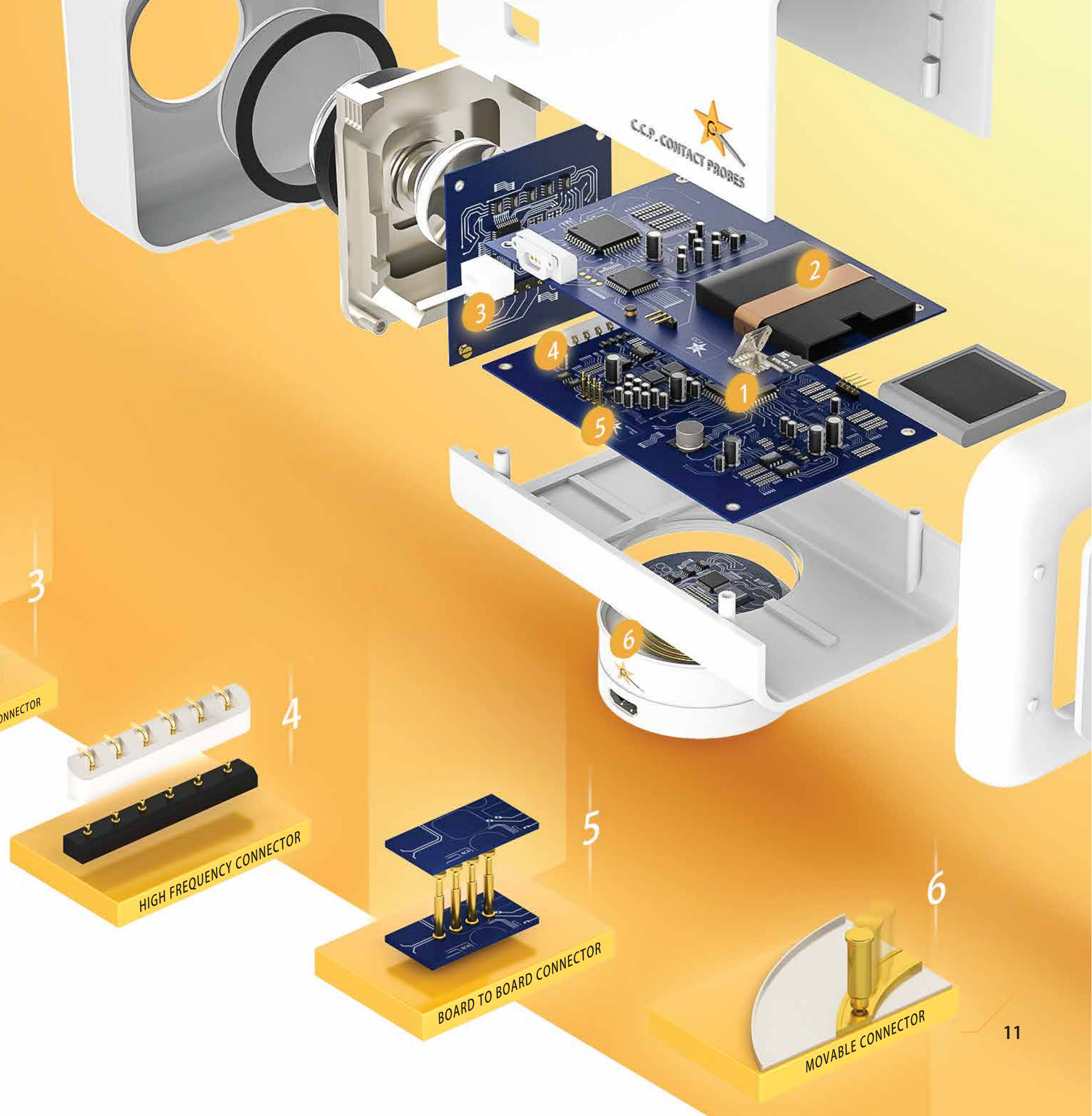
Understanding Galvanic Corrosion:

Galvanic corrosion occurs, when two different metals of different nobility get into close contact in the presence of an electrolyte such as water. Dissimilar metals have different electrode potentials which cause one of the metals to act as a cathode and the other as an anode. The resulting current flow is the main cause for the dissolve of the lesser noble (anode) metal. Acid or alkali environments, for example on human skin, can accelerate galvanic corrosion significantly and attack even metals such as gold and platin.

Plating	Testing standard	Au(50u") Layer	APII Layer	Super AP Layer
Nickel Release	EN 12472:2005+A1:2009	Nickel-containing process	Nickel-free process	Nickel-free process
Contact Resistance (mΩ)	EIA-364-23	< 50	< 50	< 50
Salt Spray Resistance (HR)	EIA-362-26	96	96	168
Artificial Sweat Resistance (HR)	ISO-3160	96	96	168
Surface Hardness (HV)	ISO 6507-1:2005	200	400	400
Electrolysis Resistance Time	1mA, 5V, Pitch=0.60mm	<1 Min	15 Min	60 Min

POGO PIN APPLICATIONS

Spring loaded connectors can be used for a wide variety of applications. Their versatility make them true allrounders, from charging applications to high frequency signal transmission.



ENTERTAINMENT

- Smart Toys
- Game Consoles
- Audio Equipment

MEDICAL

- CPI Dockings
- Skin Lasers
- Inhalation Machines
- Pregnancy Monitors

INDUSTRIAL

- Robotic Arms
- Docking Stations
- Rugged Devices
- Printers

RETAIL

- Barcode Scanners
- Smart Price Tags
- POS Systems (Point of sale)
- Credit Card Readers

HOUSEHOLD

- Dish Washers
- Home Pods
- Vacuum Cleaners
- Hair Dryers
- Air Purifiers
- Water Cookers

SECURITY

- Smart Locks
- CCTV Cameras
- Smoke Detectors

PERSONAL

- Laptops
- Smartphones
- E-Cigarettes
- Smart Watches
- Ear Pods
- Cameras
- Hearing Aides

TRANSPORTATION

- Car Keys
- Navigation Systems
- Board Electronics
- Airplane Entertainment Systems

WATERPROOF CONNECTORS

O-RING

Waterproof: IPx8 at best



SEALING

Waterproof: IPx7 at best



INSERT MOLDING

Waterproof: IPx7 at best
No SMT Process Possible



DOES WATER HARM POGO PINS?

CCP's waterproof pogo pin connectors are designed to withstand any long and short term submersion in water. For very challenging environments we recommend our SuperAP Plating which can withstand the effects of Galvanic Corrosion up to 60 times longer.

BALL POINT CONNECTOR

Keeping a stable connection to a moving target can be a challenge, as constant strain on the components can result in degradation of the materials and in worst case to a malfunction.

The Ball-Point Connector solves this problem by a radically new design that offers totally new engineering possibilities and a simplified assembly without cables.



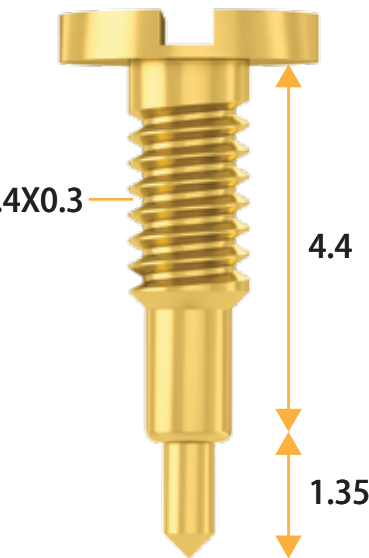
Diameter	Current	Durability
Min 0.6 mm	1A - 5A	Min 10'000 Compressions
Spring Force	Contact Resistance	Travel Distance
145g ± 20g	30 mΩ — 100 mΩ	Up to 25 km

SCREW PINS

CCP's Screw Pin design is a smart way to utilize a pogo pin as a connector as well as a mounting part, reducing the assembly cost significantly and opening new design possibilities for industrial engineers.



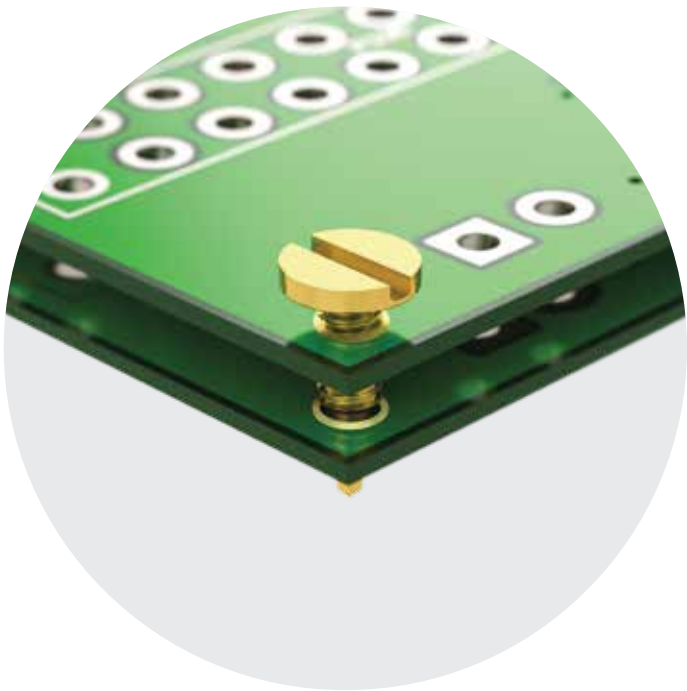
PCB



CASE

4.4

1.35



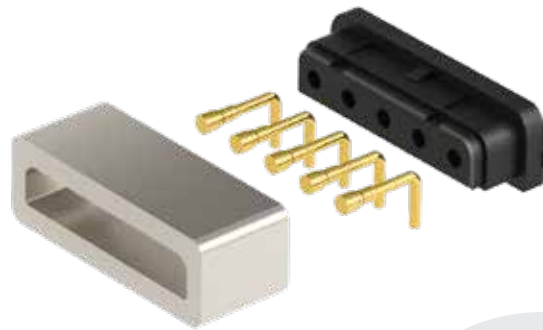
Diameter		Current	Durability
3 mm		1A	10,000 compressions
Spring Force		Contact Resistance	
120g ± 20g		200 mΩ, to customize for grounding pin purpose	

MAGNET CONNECTORS

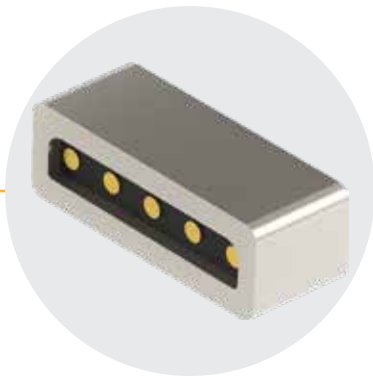
● Magnet ● Plastic Housing ● Pogo Pin



Female



Male



Easy to plug



Very durable



No accidental breaking

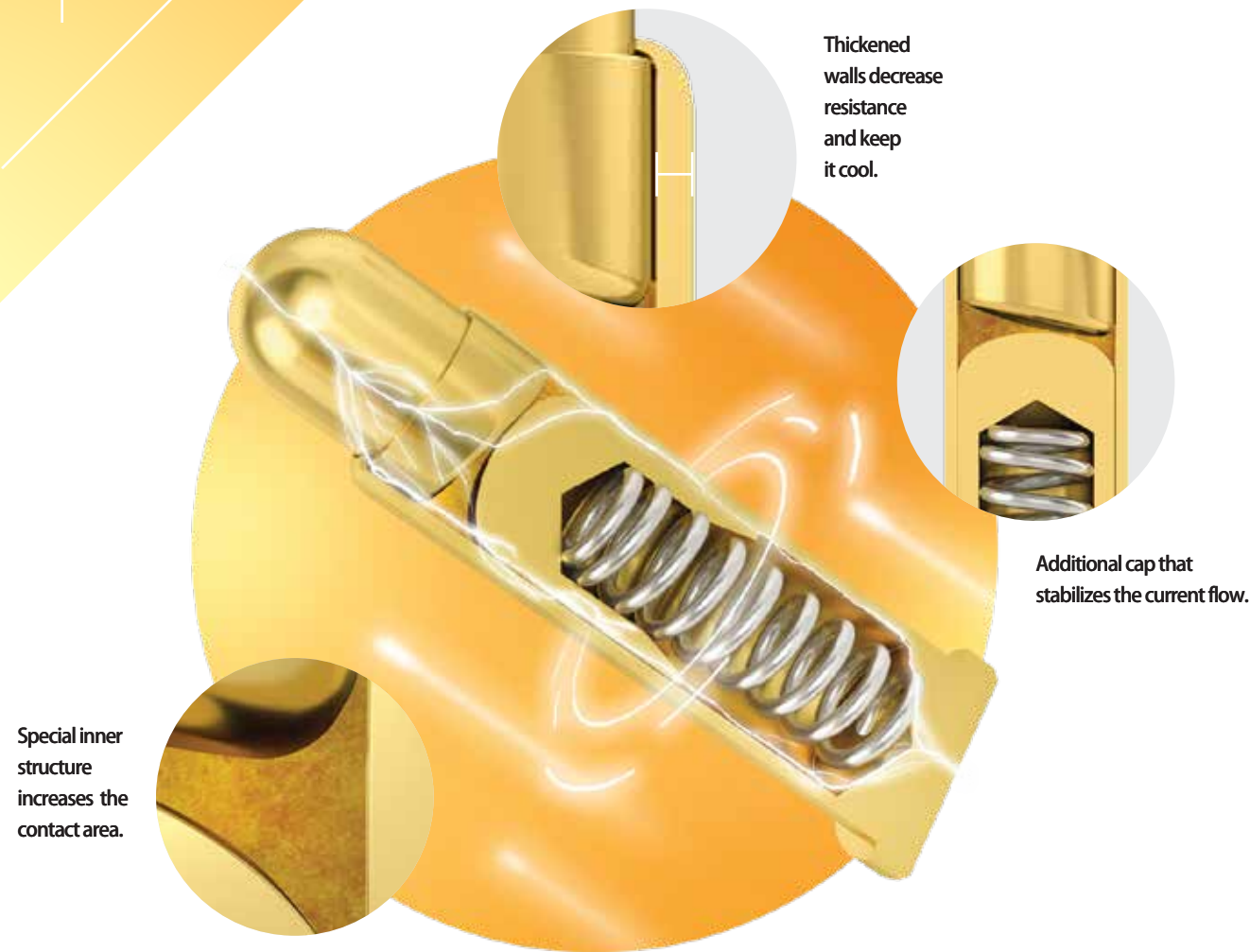


Suitable for high frequency transmission

Assembly Options		
Metal injection molded housing	Two magnets	One magnet to metal

HIGH CURRENT PINS

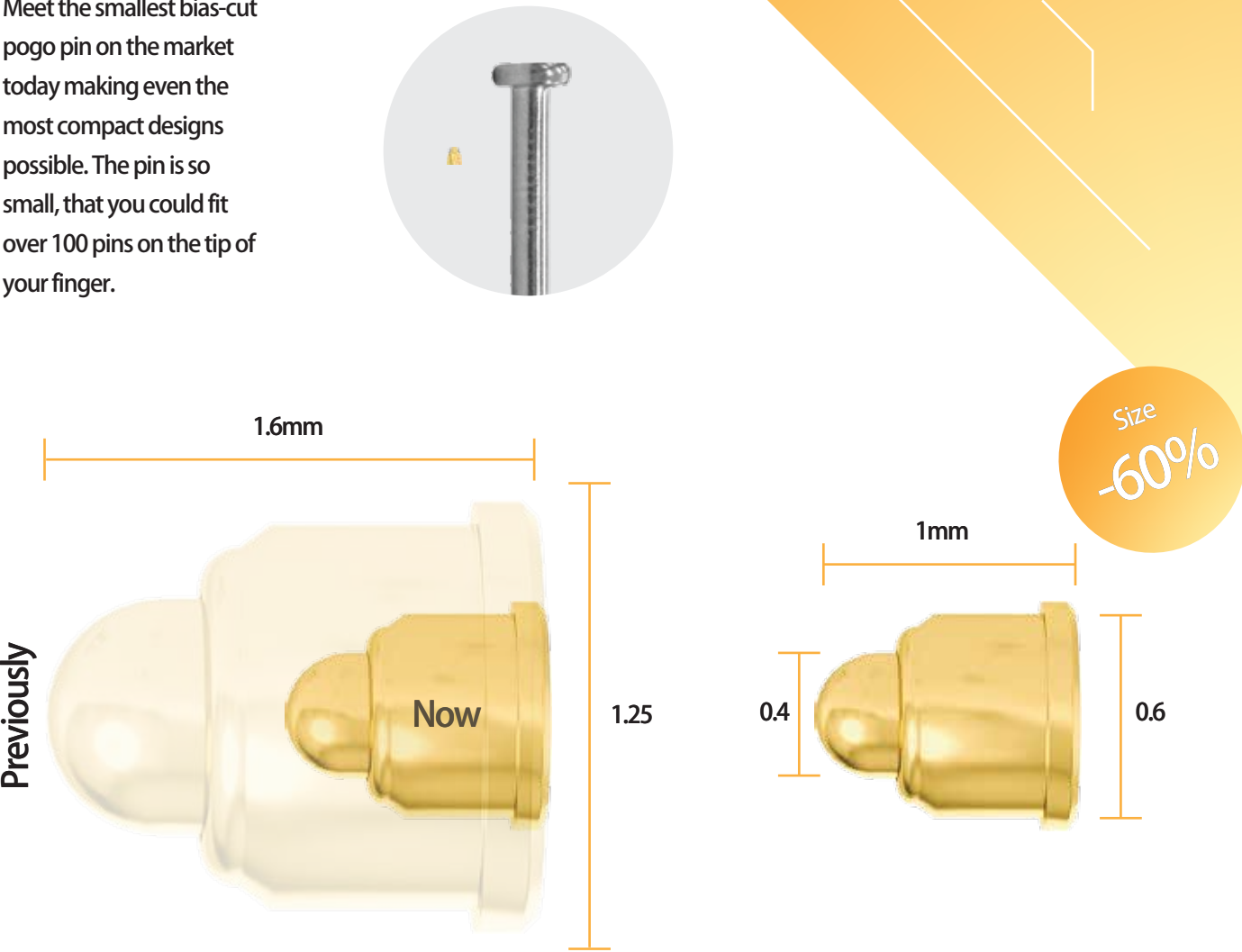
CCP's new high current designs takes Pogo Pins to a new level that is second to none in the industry.



Diameter		Current	Durability
2.4 mm		13A	10.000 compressions
Spring Force		Contact Resistance	
120g ± 20g		30 mΩ	

ULTRA SMALL PINS

Meet the smallest bias-cut pogo pin on the market today making even the most compact designs possible. The pin is so small, that you could fit over 100 pins on the tip of your finger.

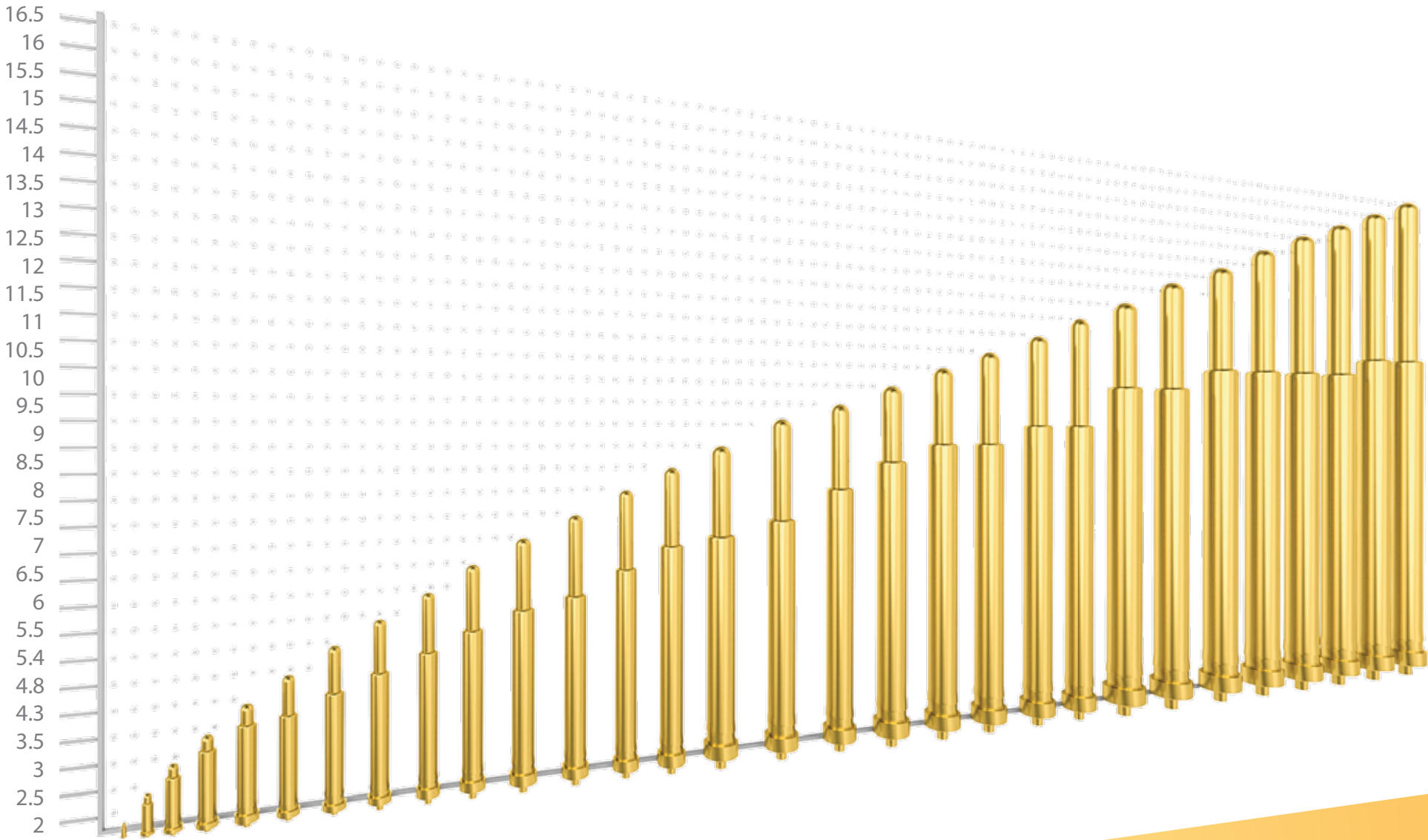


Diameter		Current	Durability
0.6 mm		1A	600 compressions
Spring Force		Contact Resistance	
30g		100 mΩ	

STANDARD PINS

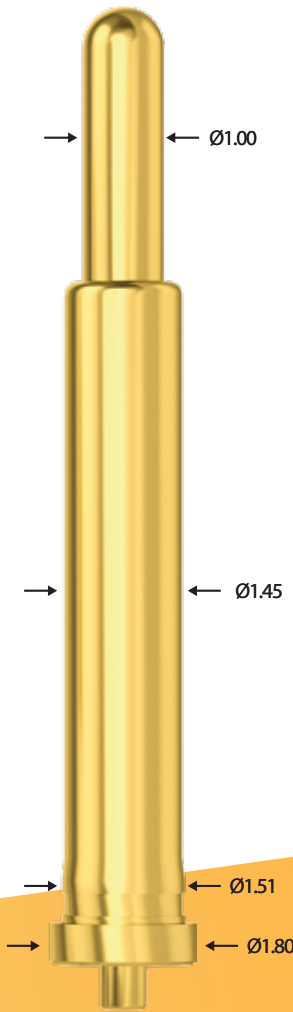
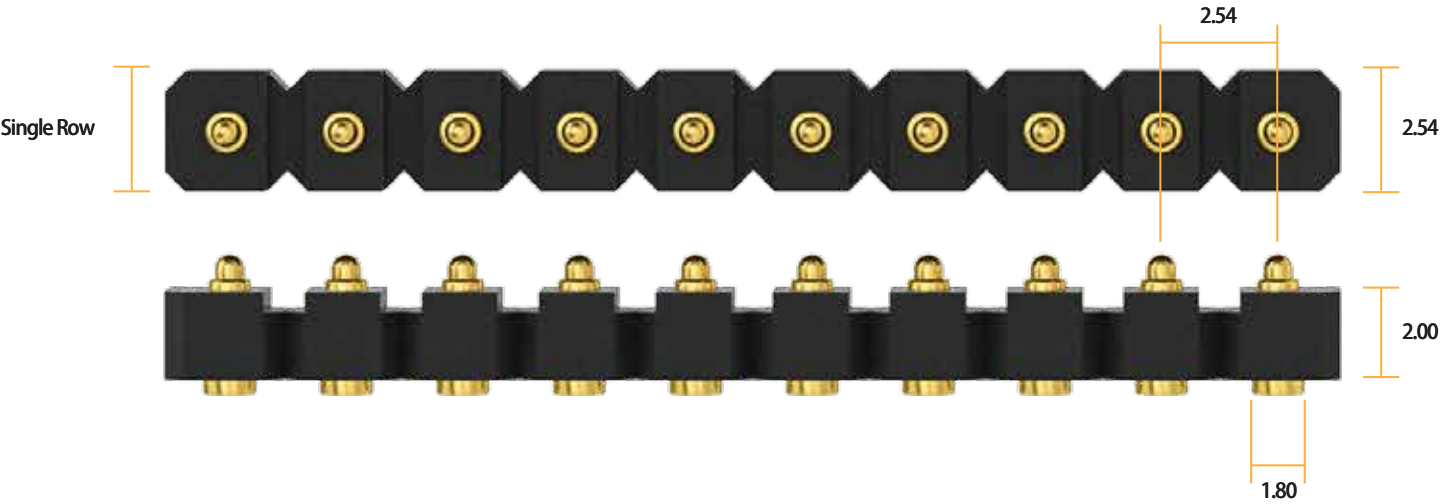
2.54mm Pitch

The Standard Connector Series aims to offer a comprehensive selection of internationally compatible connectors. Its smart design and simple structure makes it very cost effective even at small volumes.



Modular Housing:

Available from 1-20 columns and up to 4 rows.



Technical Specs:

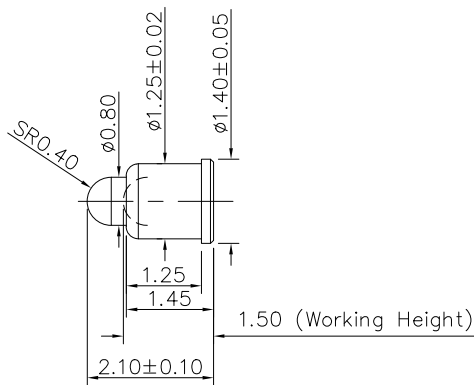
- Available Spring Force: 30g, 60g and 100g
- Current Rating: 1-5 Amps
- Durability: 100.000 Life Cycles
- Pitch: 2mm, 2.5mm or/and 2.54mm
- Diameter: 1.3 and 1.45
- Tail: No Tail and Tailed Versions

NON STANDARD CONNECTOR

1 PIN

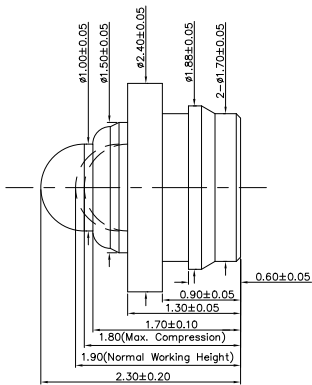
NON STANDARD CONNECTOR

1 PIN



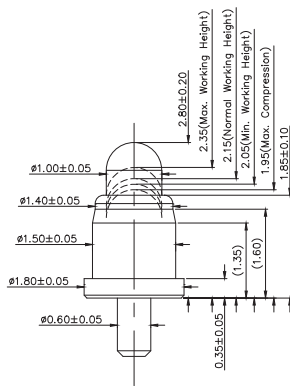
PN: H199M2-R

Length: 2.10 mm
Working Height: 1.50 mm
Current: 1 Amp
Contact Resistance: 100 mΩ
Spring Force: 100g ± 20%



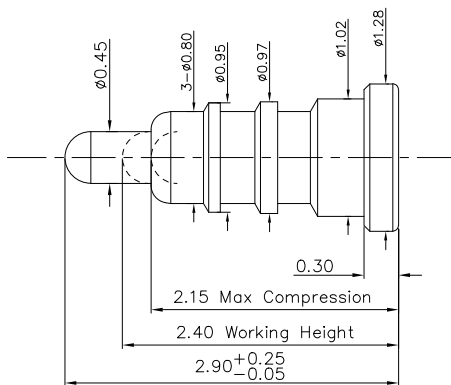
PN: P5271FP04

Length: 2.30 mm
Working Height: 1.90 mm
Current: 1 Amp
Contact Resistance: 100 mΩ
Spring Force: 80g ± 20g



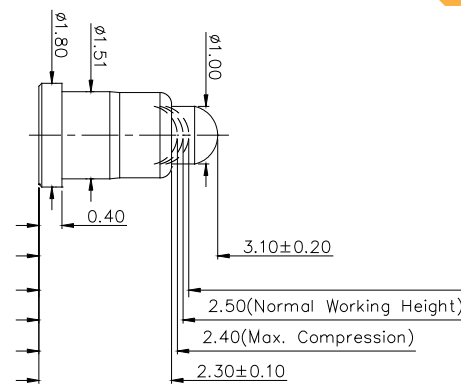
PN: P5625MF01-01A000CR

Length: 2.80 mm
Working Height: 2.15 mm
Current: 1 Amp
Contact Resistance: 100 mΩ
Spring Force: 40g ± 15g



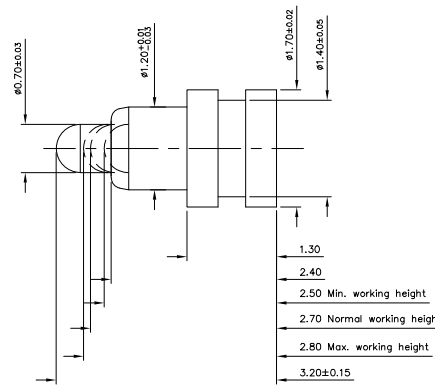
PN: P2988FH03

Length: 2.90 mm
Working Height: 2.40 mm
Current: 1 Amp
Contact Resistance: 50 mΩ
Spring Force: 60g ± 20g



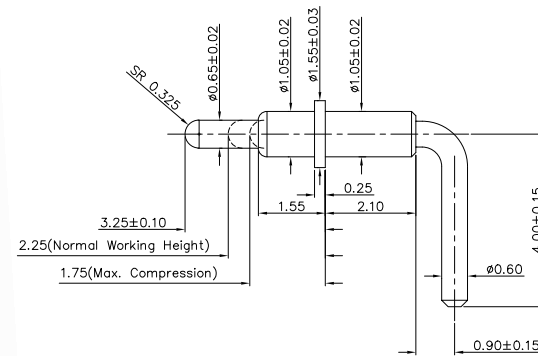
PN: P3198FH01

Length: 3.10 mm
Working Height: 2.50 mm
Current: 1 Amp
Contact Resistance: 50 mΩ
Spring Force: 80g ± 20g



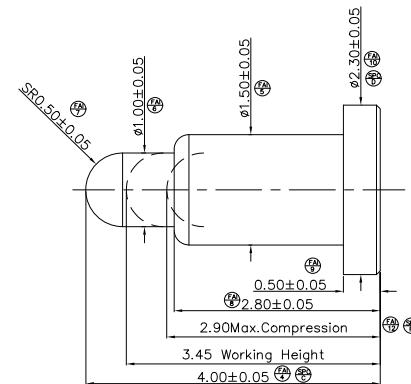
PN: P2616FH03

Length: 3.20 mm
Working Height: 2.70 mm
Current: 1.5 Amps
Contact Resistance: 50 mΩ
Spring Force: 80g ± 20g



PN: P3533BP02

Length: 3.25 mm
Working Height: 2.25 mm
Current: 1 Amp
Contact Resistance: 50 mΩ
Spring Force: 80g ± 20g

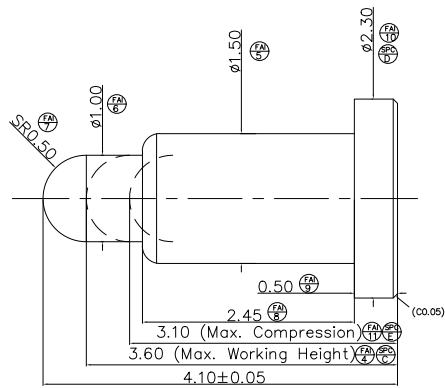


PN: P3775FH01

Length: 4.00 mm
Working Height: 3.45 mm
Current: 1 Amp
Contact Resistance: 200 mΩ
Spring Force: 45g ± 10g

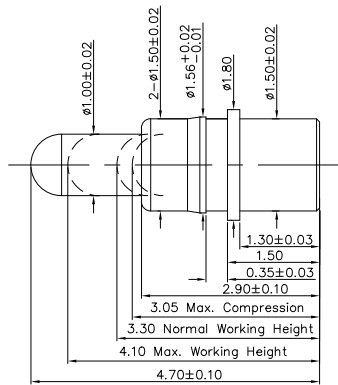
NON STANDARD CONNECTOR

1 PIN



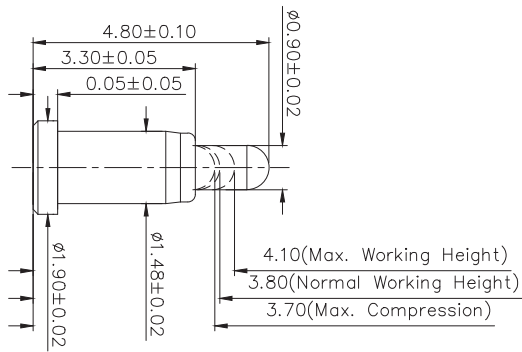
PN: P5067FP01-R

- Length: 4.10 mm
- Working Height: 3.60 mm
- Current: 1 Amp
- Contact Resistance: 100 mΩ
- Spring Force: 100g ± 20%



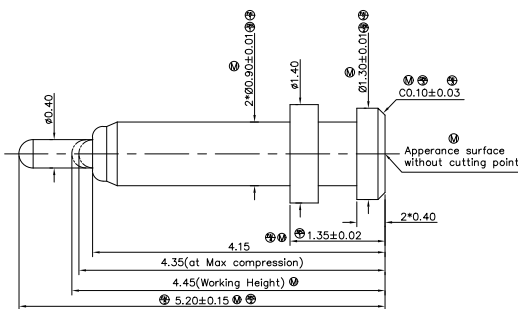
PN: P3697PP01

- Length: 4.70 mm
- Working Height: 3.30 mm
- Current: 1 Amp
- Contact Resistance: 100 mΩ
- Spring Force: 60g ± 20g



PN: P5660MF03-01A000CR

- Length: 4.80 mm
- Working Height: 3.80 mm
- Current: 1 Amp
- Contact Resistance: 50 mΩ
- Spring Force: 70g ± 20g

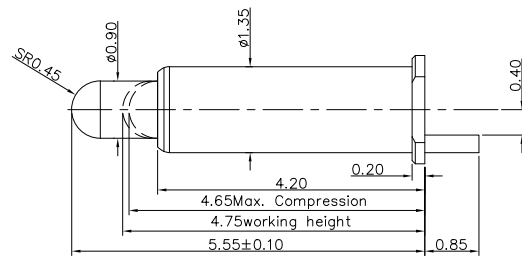


PN: P3989FH01

- Length: 5.20 mm
- Working Height: 4.45 mm
- Current: 1 Amp
- Contact Resistance: 50 mΩ
- Spring Force: 65g ± 15%

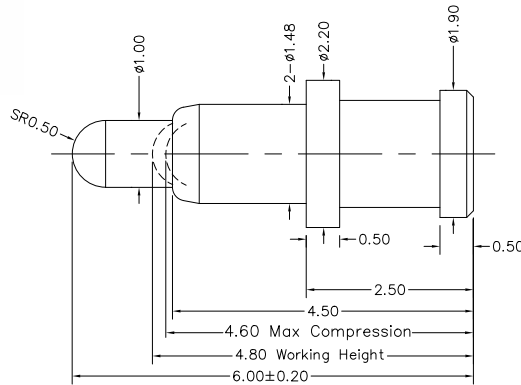
NON STANDARD CONNECTOR

1 PIN



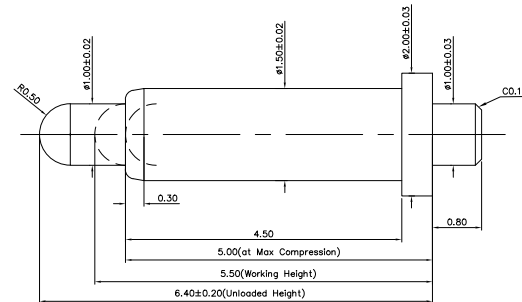
PN: P3730SH02

- Length: 5.50 mm
- Working Height: 4.75 mm
- Current: 5 Amps
- Contact Resistance: 50 mΩ
- Spring Force: 100g ± 20%



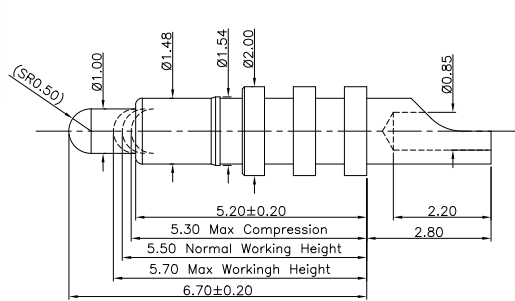
PN: P3256FH01

- Length: 6.00 mm
- Working Height: 4.80 mm
- Current: 1 Amp
- Contact Resistance: 50 mΩ
- Spring Force: 120g ± 20g



PN: H024M0

- Length: 6.40 mm
- Working Height: 5.50 mm
- Current: 1 Amp
- Contact Resistance: 50 mΩ
- Spring Force: 100g ± 20%

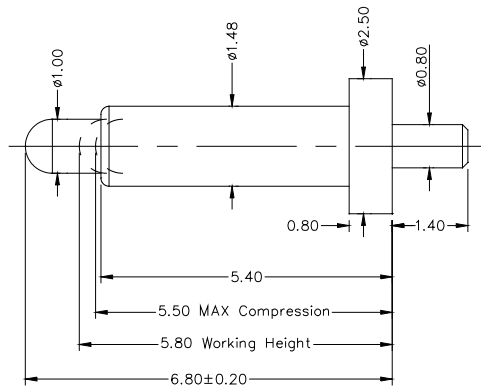


PN: P2859SH01

- Length: 6.70 mm
- Working Height: 5.50 mm
- Current: 5 Amps
- Contact Resistance: 50 mΩ
- Spring Force: 110g ± 20%

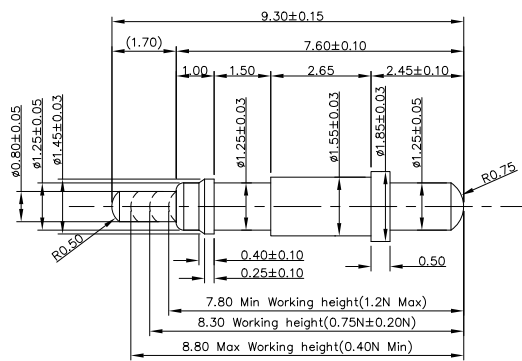
NON STANDARD CONNECTOR

1 PIN



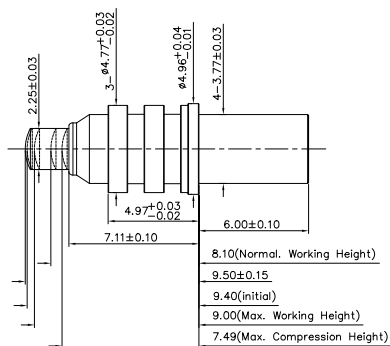
PN: P2871PH01

Length: 6.80 mm
Working Height: 5.80 mm
Current: 3 Amps
Contact Resistance: 50 mΩ
Spring Force: 110g ± 20%



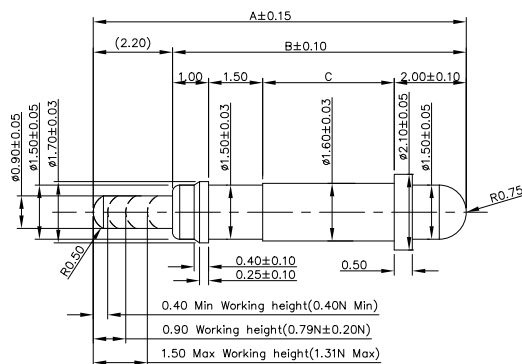
PN: P2631PH03

Length: 9.30 mm
Working Height: 8.30 mm
Current: 2 Amps
Contact Resistance: 100 mΩ
Spring Force: 80g ± 20g



PN: P6123PH03

Length: 9.50 mm
Working Height: 8.10 mm
Current: 5 Amps
Contact Resistance: 50 mΩ
Spring Force: 180g ± 20%

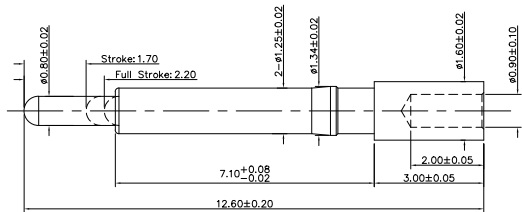


PN: P2683PH09

Length: 10.05 mm
Working Height: 0.90 mm
Current: 2 Amps
Contact Resistance: 50 mΩ
Spring Force: 60g ± 20g

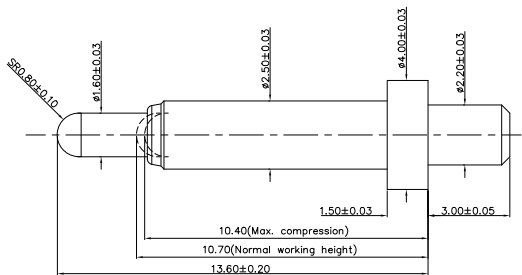
NON STANDARD CONNECTOR

1 PIN



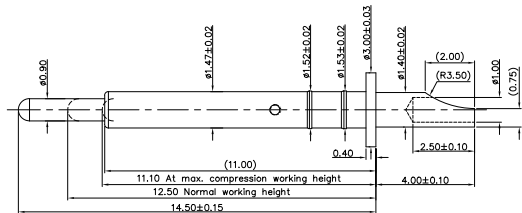
PN: P5773PH02

Length: 12.60 mm
Working Height: 2.20 mm
Current: 1 Amp
Contact Resistance: 100 mΩ
Spring Force: 80g ± 20g



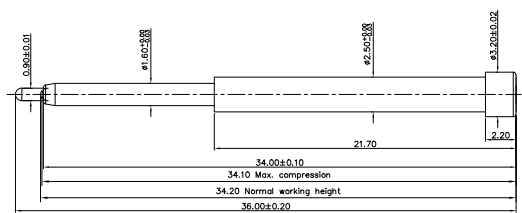
PN: P2783PH01

Length: 13.60 mm
Working Height: 10.70 mm
Current: 5 Amps
Contact Resistance: 50 mΩ
Spring Force: 90g ± 20g



PN: P3737SH01

Length: 14.50 mm
Working Height: 12.50 mm
Current: 2 Amps
Contact Resistance: 50 mΩ
Spring Force: 100g ± 20%

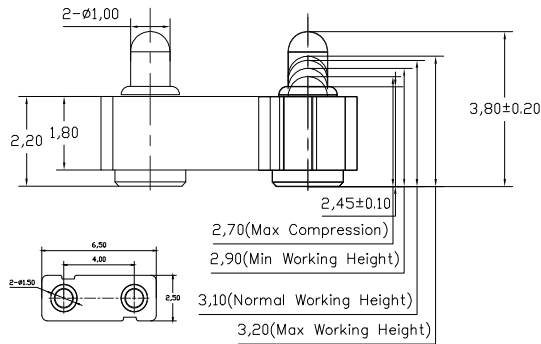


PN: P2977FH01

Length: 36.00 mm
Working Height: 34.20 mm
Current: 1 Amp
Contact Resistance: 50 mΩ
Spring Force: 100g ± 20%

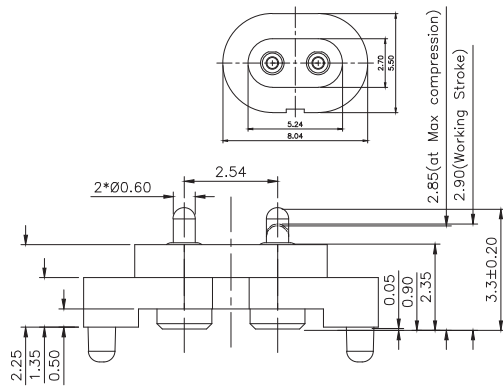
NON STANDARD
CONNECTOR

2 PINS



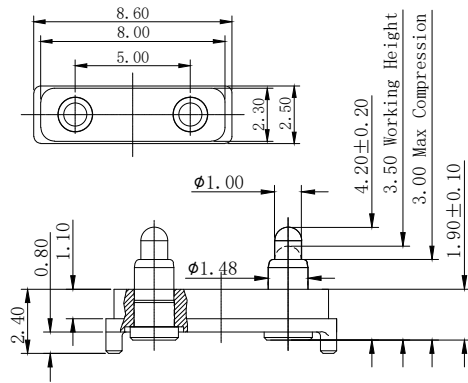
PN: F1106AA01-02A400MR

- Length: 3.80 mm
- Working Height: 3.10 mm
- Pitch: 4.00 mm
- Current: 1 Amps
- Contact Resistance: 100 mΩ
- Spring Force: 90g ± 20%



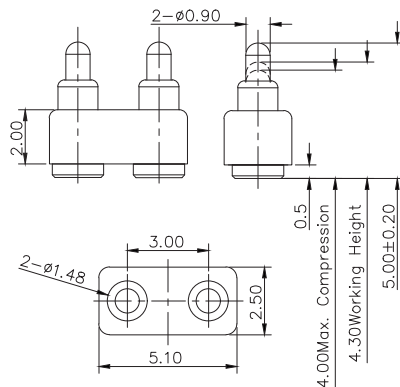
PN: P3013MF01-02F254MR

- Length: 3.30 mm
- Working Height: 2.90 mm
- Pitch: 2.54 mm
- Current: 1 Amp
- Contact Resistance: 50 mΩ
- Spring Force: 100g ± 20g



PN: F969AA01-02A500MR

- Length: 4.20 mm
- Working Height: 3.50 mm
- Pitch: 5.00 mm
- Current: 1 Amp
- Contact Resistance: 50 mΩ
- Spring Force: 100g ± 20%

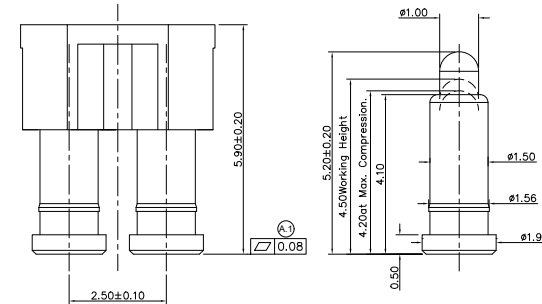


PN: P3708MF01-02F300MR

- Length: 5.00 mm
- Working Height: 4.30 mm
- Pitch: 3.00 mm
- Current: 1 Amp
- Contact Resistance: 50 mΩ
- Spring Force: 60g ± 20g

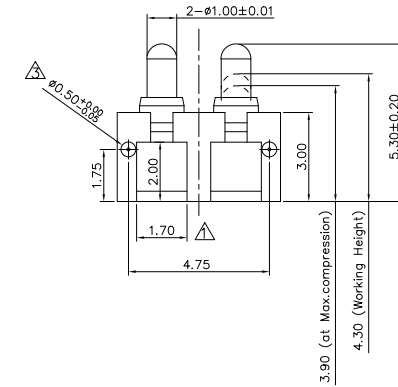
NON STANDARD
CONNECTOR

2 PINS



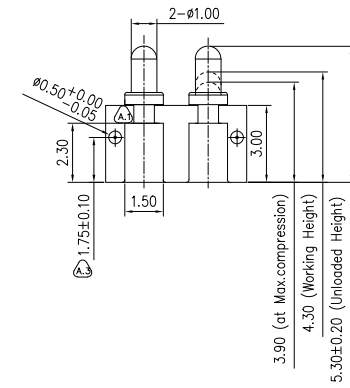
PN: F1835AA01-02A250CR

- Length: 5.20 mm
- Working Height: 4.50 mm
- Pitch: 2.50 mm
- Current: 1 Amp
- Contact Resistance: 100 mΩ
- Spring Force: 60g ± 20g



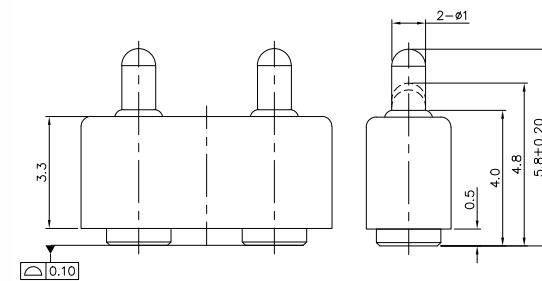
PN: H020M0-H02B250R

- Length: 5.30 mm
- Working Height: 4.30 mm
- Pitch: 2.50 mm
- Current: 2.5 Amps
- Contact Resistance: 100 mΩ
- Spring Force: 120g ± 20%



PN: H036M0-H02C250R

- Length: 5.30 mm
- Working Height: 4.30 mm
- Pitch: 2.50 mm
- Current: 1 Amp
- Contact Resistance: 50 mΩ
- Spring Force: 120g ± 20%

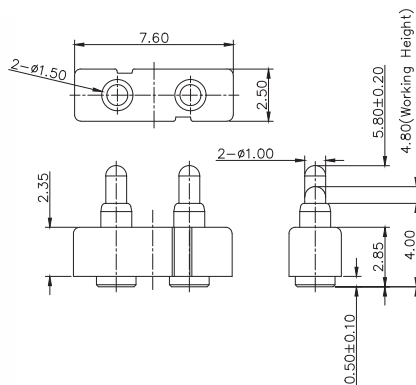


PN: N005M4-02A400HR

- Length: 5.80 mm
- Working Height: 4.80 mm
- Pitch: 4.00 mm
- Current: 1 Amp
- Contact Resistance: 50 mΩ
- Spring Force: 110g ± 20%

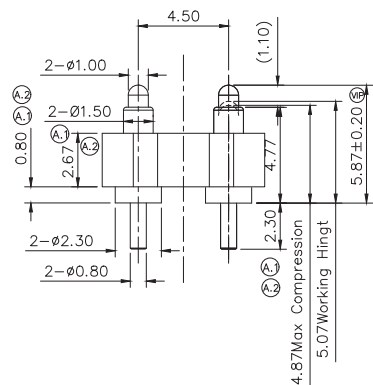
NON STANDARD CONNECTOR

2 PINS



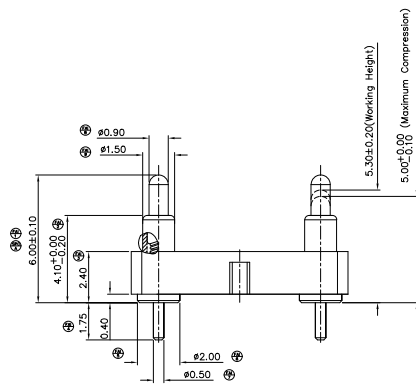
PN: N005M4-02C350MR

Length: 5.80 mm
Working Height: 4.80 mm
Pitch: 3.50 mm
Current: 1 Amp
Contact Resistance: 50 mΩ
Spring Force: 110g ± 20%



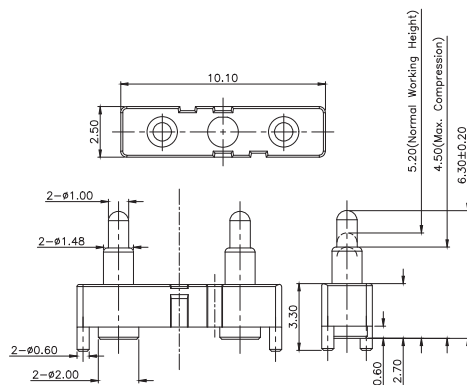
PN: P2688MP01-02G450MR

Length: 5.87 mm
Working Height: 5.07 mm
Pitch: 4.50 mm
Current: 1 Amp
Contact Resistance: 50 mΩ
Spring Force: 110g ± 20%



PN: P3721MP01-02A762HR

Length: 6.00 mm
Working Height: 5.30 mm
Pitch: 2.54 mm
Current: 2.5 Amps
Contact Resistance: 30 mΩ
Spring Force: 50g ± 20%

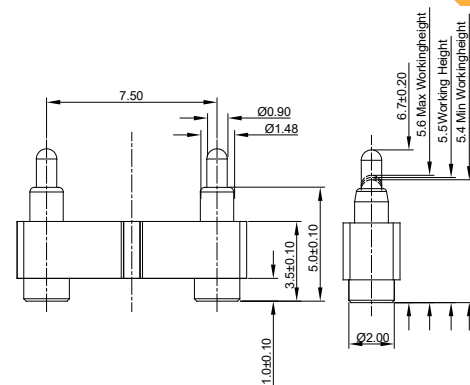


PN: P3037MF01-03A300HB

Length: 6.30 mm
Working Height: 5.20 mm
Pitch: 6.00 mm
Current: 1 Amp
Contact Resistance: 50 mΩ
Spring Force: 110g ± 20%

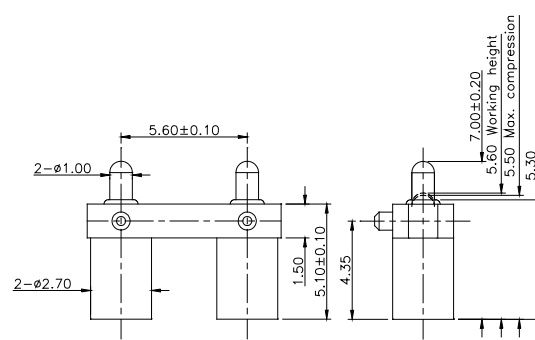
NON STANDARD CONNECTOR

2 PINS



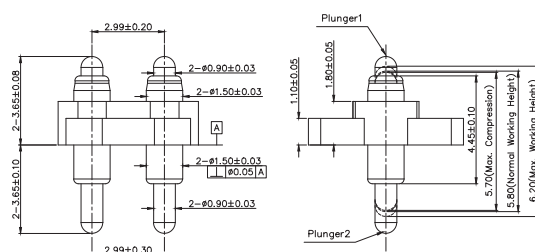
PN: F1615AA02-04B250MR

Length: 6.70 mm
Working Height: 5.50 mm
Pitch: 7.50 mm
Current: 1 Amp
Contact Resistance: 50 mΩ
Spring Force: 110g ± 20%



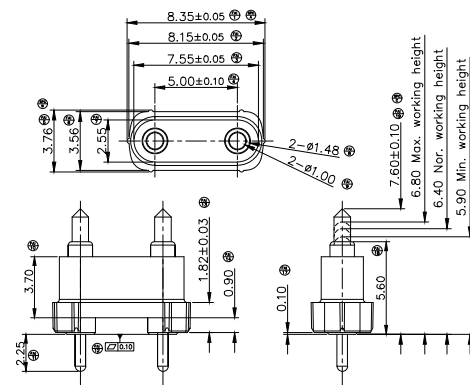
PN: P2723MF01-03B280HB

Length: 7.00 mm
Working Height: 5.60 mm
Pitch: 5.60 mm
Current: 3 Amps
Contact Resistance: 50 mΩ
Spring Force: 130g ± 25%



PN: P5121MD10-02A324HB

Length: 7.30 mm
Working Height: 5.80 mm
Pitch: 2.99 mm
Current: 2 Amps
Contact Resistance: 50 mΩ
Spring Force: 85g ± 15g

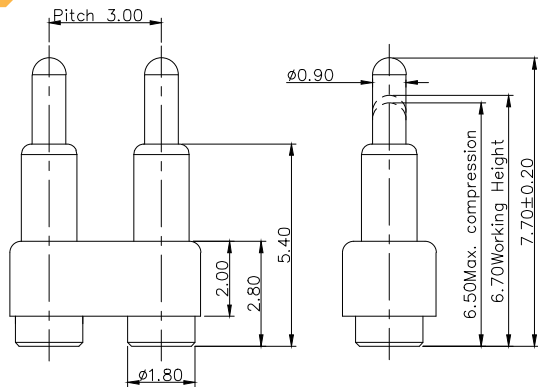


PN: P2388MP10-02G500HR

Length: 7.50 mm
Working Height: 6.40 mm
Pitch: 5.00 mm
Current: 1 Amp
Contact Resistance: 50 mΩ
Spring Force: 120g ± 20%

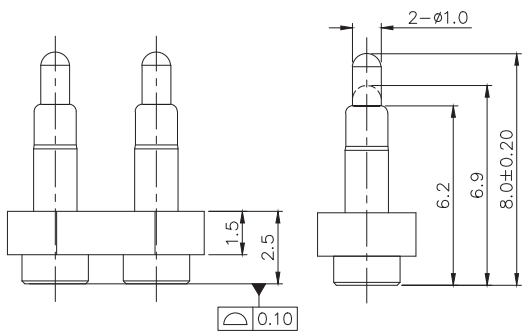
NON STANDARD CONNECTOR

2 PINS



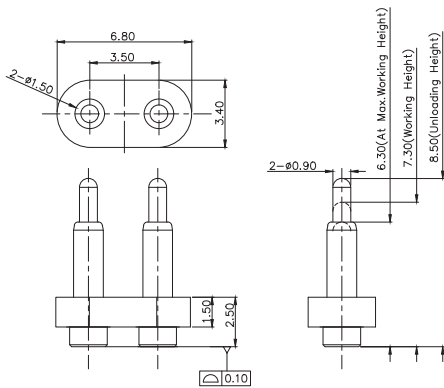
PN: F259AA02-02300MR

Length: 7.70 mm
Working Height: 6.70 mm
Pitch: 3.00 mm
Current: 1 Amp
Contact Resistance: 50 m Ω
Spring Force: 60g \pm 20%



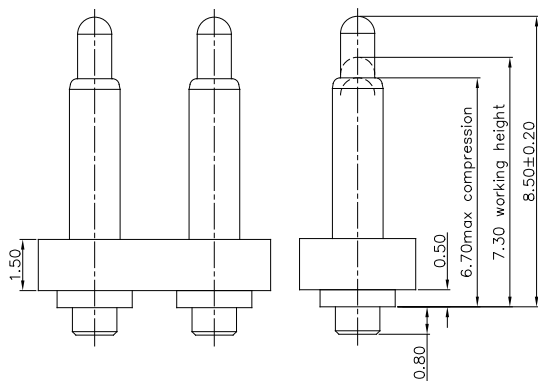
PN: N001M2-02D350MR

Length: 8.00 mm
Working Height: 6.90 mm
Pitch: 3.50 mm
Current: 1 Amp
Contact Resistance: 50 m Ω
Spring Force: 65g \pm 20%



PN: H015M1-02D350MR

Length: 8.50 mm
Working Height: 7.30 mm
Pitch: 3.50 mm
Current: 1 Amp
Contact Resistance: 50 m Ω
Spring Force: 100g \pm 20%

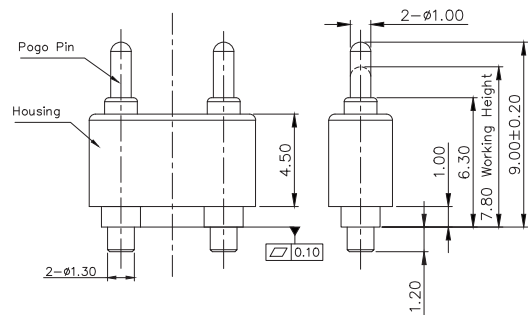


PN: P1089AA01-02D350MR

Length: 8.50 mm
Working Height: 7.30 mm
Pitch: 3.50 mm
Current: 1.5 Amps
Contact Resistance: 50 m Ω
Spring Force: 120g \pm 20%

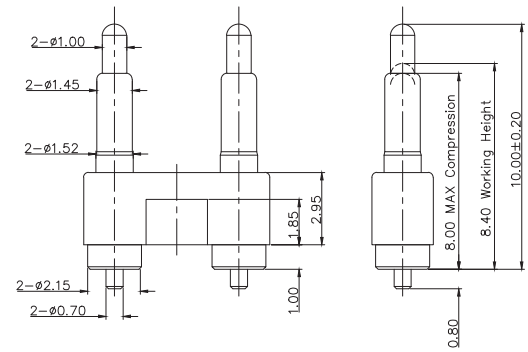
NON STANDARD CONNECTOR

2 PINS



PN: N002M10-02B500HR

Length: 9.00 mm
Working Height: 7.80 mm
Pitch: 5.00 mm
Current: 1 Amp
Contact Resistance: 50 m Ω
Spring Force: 100g \pm 20g

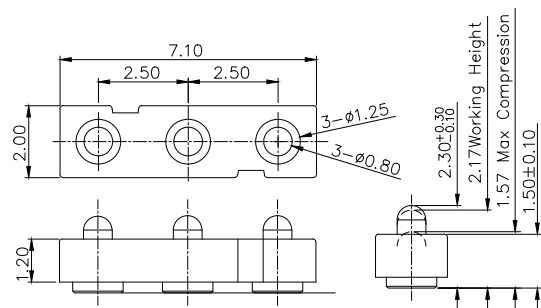


PN: P2780MF01-02A508MR

Length: 10.00 mm
Working Height: 8.40 mm
Pitch: 5.08 mm
Current: 1 Amp
Contact Resistance: 50 m Ω
Spring Force: 100g \pm 20%

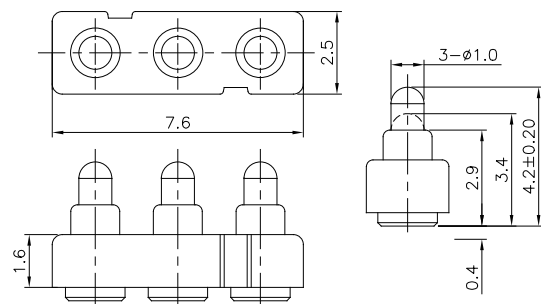
NON STANDARD CONNECTOR

3 PINS



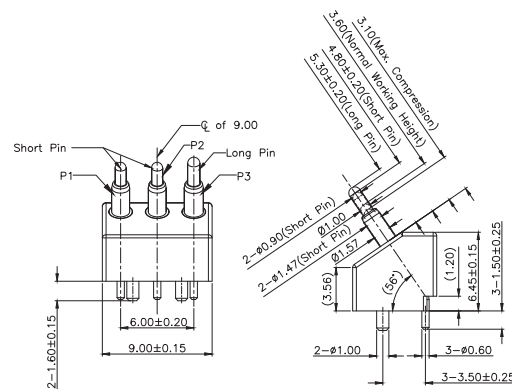
PN: F1106AA01-02A400MR

- Length: 2.30 mm
- Working Height: 2.17 mm
- Pitch: 2.50 mm
- Current: 1 Amp
- Contact Resistance: 100 mΩ
- Spring Force: 80g ± 20%



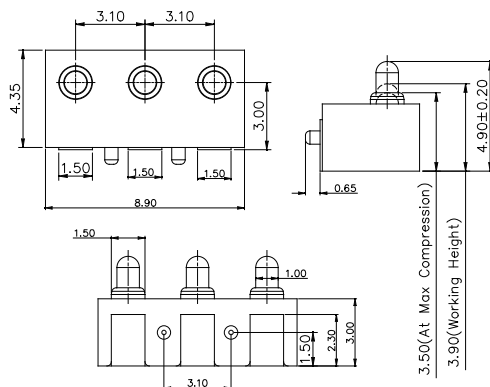
PN: N103M5-03G250MR

- Length: 4.20 mm
- Working Height: 3.40 mm
- Pitch: 2.50 mm
- Current: 1 Amp
- Contact Resistance: 50 mΩ
- Spring Force: 120g ± 20%



PN: P3002MB01-03V300HR

- Length: 4.80 / 5.30 mm
- Working Height: 3.60 mm
- Pitch: 3.00 mm
- Current: 3 Amps
- Contact Resistance: 50 mΩ
- Spring Force: 65g ± 20g

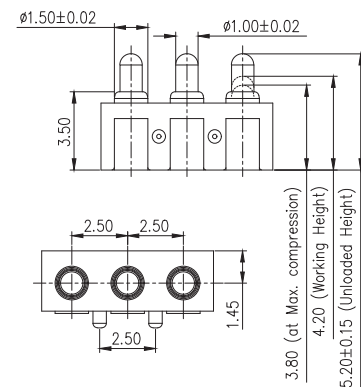


PN: H003M7-H03A310R

- Length: 4.90 mm
- Working Height: 3.90 mm
- Pitch: 3.10 mm
- Current: 1 Amp
- Contact Resistance: 50 mΩ
- Spring Force: 120g ± 20%

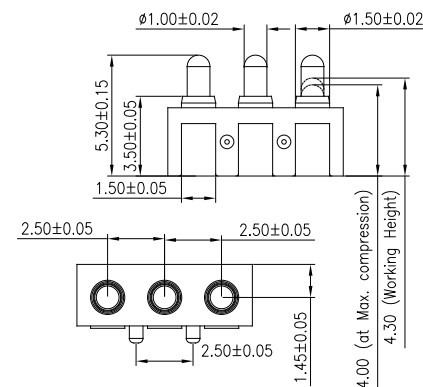
NON STANDARD CONNECTOR

3 PINS



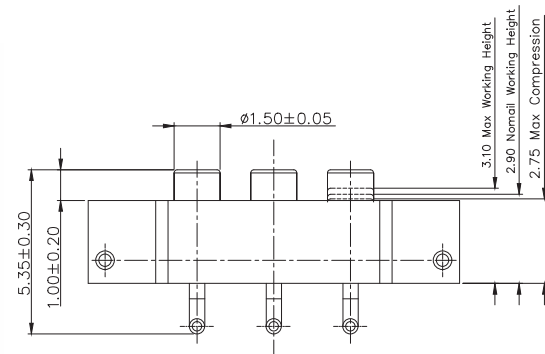
PN: H003M1-H03B250RR

- Length: 5.20 mm
- Working Height: 4.20 mm
- Pitch: 2.50 mm
- Current: 1 Amp
- Contact Resistance: 50 mΩ
- Spring Force: 120g ± 20%



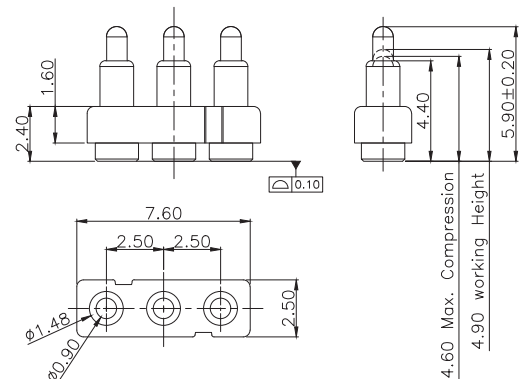
PN: H003M3-H03B250R

- Length: 5.30 mm
- Working Height: 4.30 mm
- Pitch: 2.50 mm
- Current: 1 Amps
- Contact Resistance: 50 mΩ
- Spring Force: 120g ± 20%



PN: P3309MF01-03R250MR

- Length: 5.30 mm
- Working Height: 3.10 mm
- Pitch: 2.50 mm
- Current: 1 Amp
- Contact Resistance: 100 mΩ
- Spring Force: 100g ± 20%

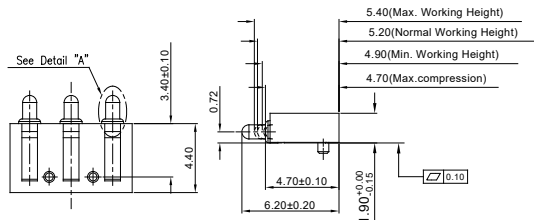


PN: F515AA01-03250MR

- Length: 5.90 mm
- Working Height: 4.90 mm
- Pitch: 2.50 mm
- Current: 1 Amp
- Contact Resistance: 50 mΩ
- Spring Force: 120g ± 20%

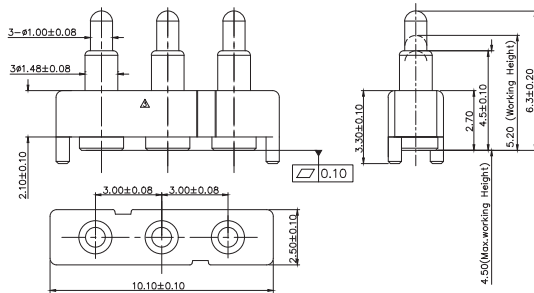
NON STANDARD
CONNECTOR

3 PINS



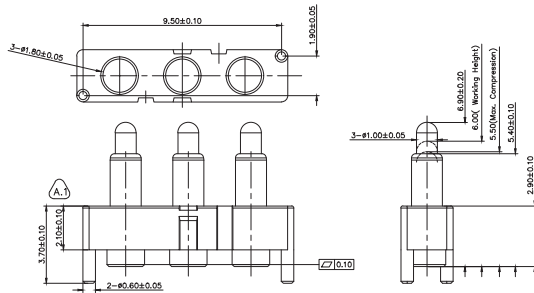
PN: R175AA09-03265HR

Length: 6.20 mm
Working Height: 5.40 mm
Pitch: 4.90 mm
Current: 2.5 Amps
Contact Resistance: 50 mΩ
Spring Force: 120g ± 20%



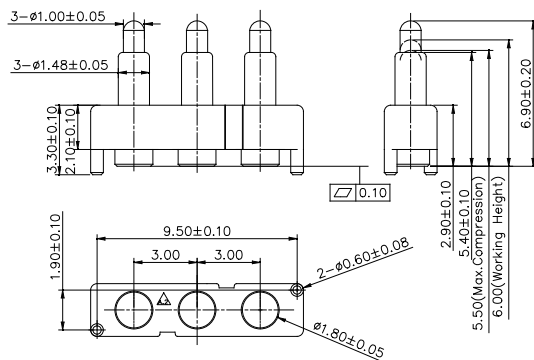
PN: H179M0-03A300MR

Length: 6.30 mm
Working Height: 5.20 mm
Pitch: 3.00 mm
Current: 1 Amp
Contact Resistance: 50 mΩ
Spring Force: 110g ± 20%



PN: F1767AA01-03A300MR

Length: 6.90 mm
Working Height: 6.00 mm
Pitch: 3.00 mm
Current: 1 Amp
Contact Resistance: 50 mΩ
Spring Force: 100g ± 20%

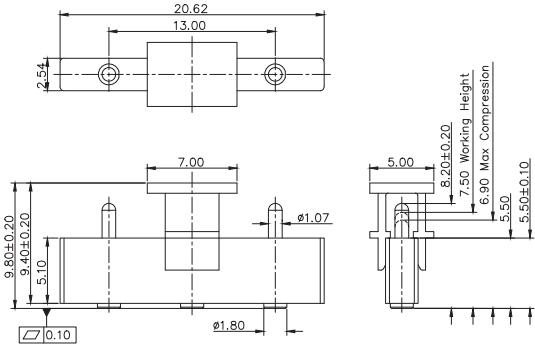


PN: N042M4-03A300MR

Length: 6.90 mm
Working Height: 6.00 mm
Pitch: 3.00 mm
Current: 1 Amp
Contact Resistance: 50 mΩ
Spring Force: 60g ± 20g

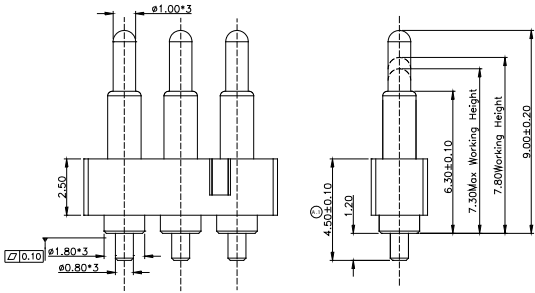
NON STANDARD
CONNECTOR

3 PINS



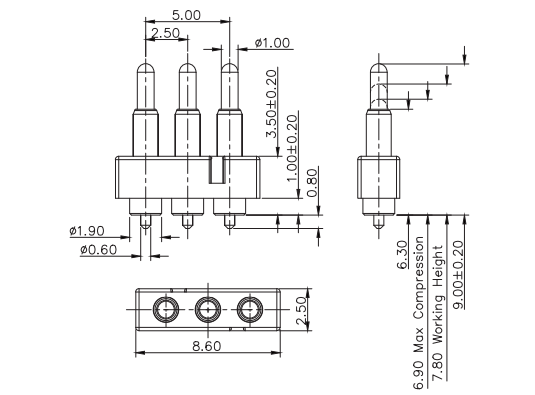
PN: F1712AA02-03D650MR

Length: 8.20 mm
Working Height: 7.50 mm
Pitch: 6.50 mm
Current: 1 Amp
Contact Resistance: 100 mΩ
Spring Force: 85g ± 20%



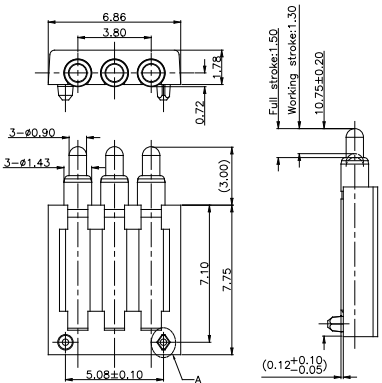
PN: P1500AA01-03C250MR

Length: 9.00 mm
Working Height: 7.80 mm
Pitch: 2.50 mm
Current: 1 Amp
Contact Resistance: 50 mΩ
Spring Force: 60g ± 20%



PN: P2223MP01-03C250MR

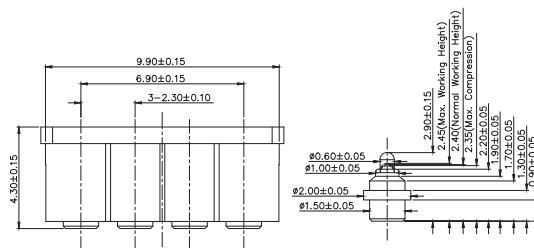
Length: 9.00 mm
Working Height: 7.80 mm
Pitch: 2.50 mm
Current: 1 Amp
Contact Resistance: 50 mΩ
Spring Force: 100g ± 20%



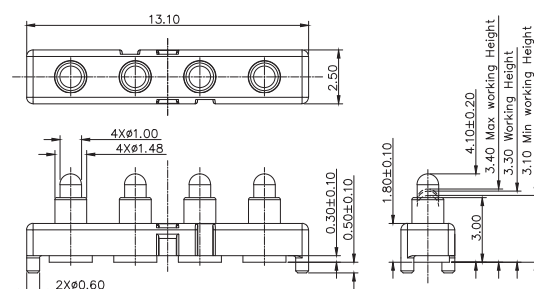
PN: R1332AA01-03B190RR

Length: 10.75 mm
Working Height: 9.45 mm
Pitch: 1.90 mm
Current: 1 Amp
Contact Resistance: 50 mΩ
Spring Force: 110g ± 20%

4 PINS



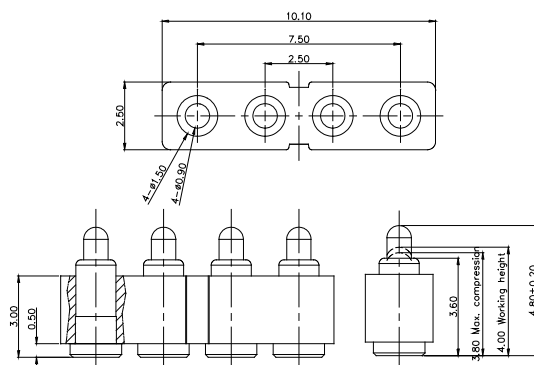
Length:	2.90 mm
Working Height:	2.40 mm
Pitch	2.30 mm
Current:	1 Amp
Contact Resistance:	50 mΩ
Spring Force:	75g ± 15g



PN: F1853AA02-04F300MR

■

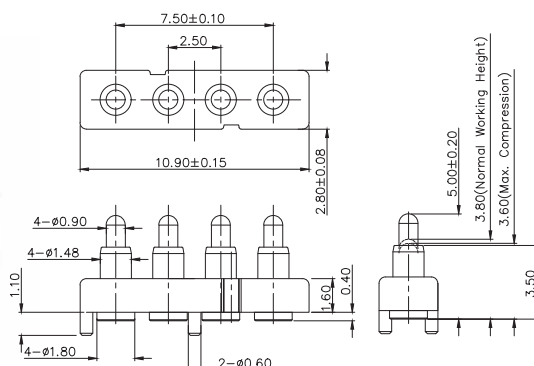
Length:	4.10 mm
Working Height:	3.20 mm
Pitch	3.00 mm
Current:	1 Amp
Contact Resistance:	50 mΩ
Spring Force:	80g ± 20%



PN: P3063MF01-04B250MR

■

Length:	4.80 mm
Working Height:	4.00 mm
Pitch	2.50 mm
Current:	2 Amps
Contact Resistance:	50 mΩ
Spring Force:	90g ± 20%

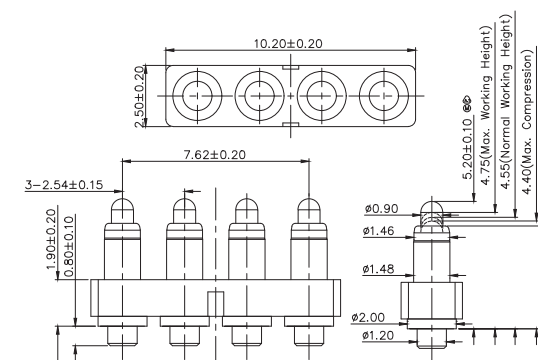


PN: P2808MF01-04D250MR

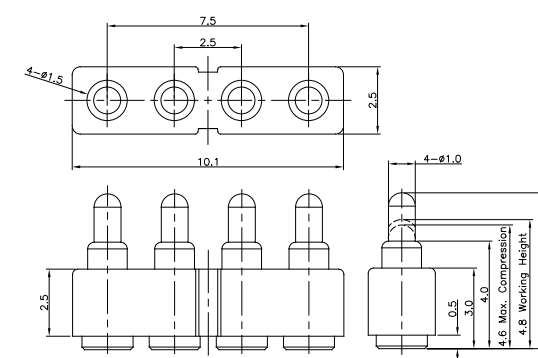
■

Length:	5.00 mm
Working Height:	3.80 mm
Pitch	2.50 mm
Current:	2 Amps
Contact Resistance:	50 mΩ
Spring Force:	90g ± 20g

4 PINS



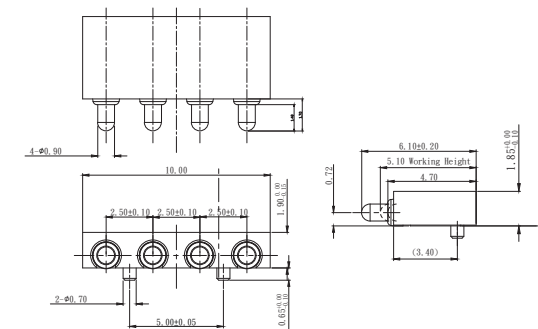
Length:	5.20 mm
Working Height:	4.55 mm
Pitch	2.54 mm
Current:	1 Amp
Contact Resistance:	50 mΩ
Spring Force:	55g ± 10g



PN: N005M4-04B250MR

■

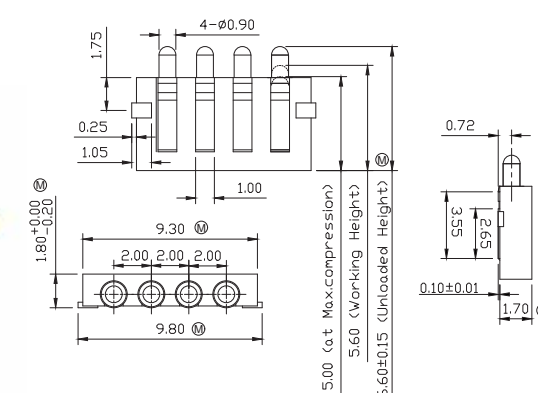
Length:	5.80 mm
Working Height:	4.80 mm
Pitch	2.50 mm
Current:	1 Amp
Contact Resistance:	50 mΩ
Spring Force:	110g ± 20%



PN: R175AA00-04250RR

■

Length:	6.10 mm
Working Height:	5.10 mm
Pitch	2.50 mm
Current:	1 Amp
Contact Resistance:	50 mΩ
Spring Force:	110g ± 20%

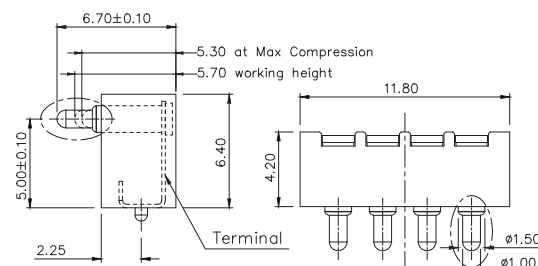


PN: H016M0-H04A200R

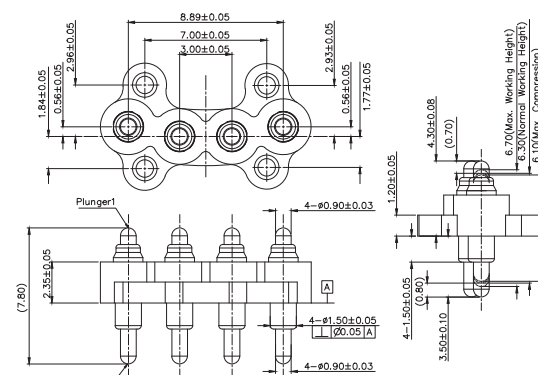
■

Length:	6.60 mm
Working Height:	5.60 mm
Pitch	2.00 mm
Current:	1 Amp
Contact Resistance:	50 mΩ
Spring Force:	110g ± 20%

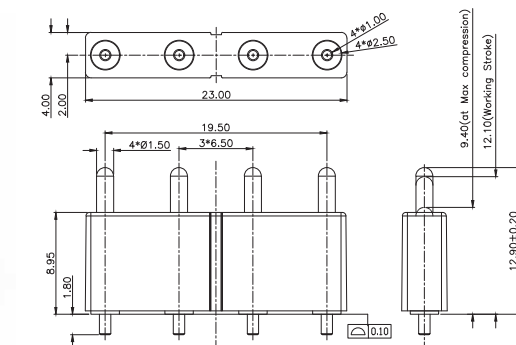
4 PINS



Length:	6.70 mm
Working Height:	5.70 mm
Pitch	2.50 mm
Current:	1 Amp
Contact Resistance:	50 mΩ
Spring Force:	120g ± 20%

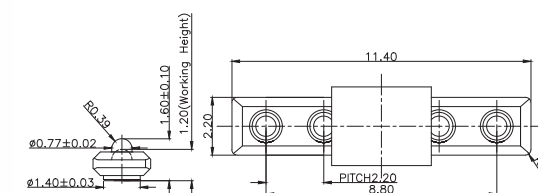


Length:	7.80 mm
Working Height:	6.30 mm
Pitch	3.00 mm
Current:	1 Amp
Contact Resistance:	30 mΩ
Spring Force:	85g ± 15g

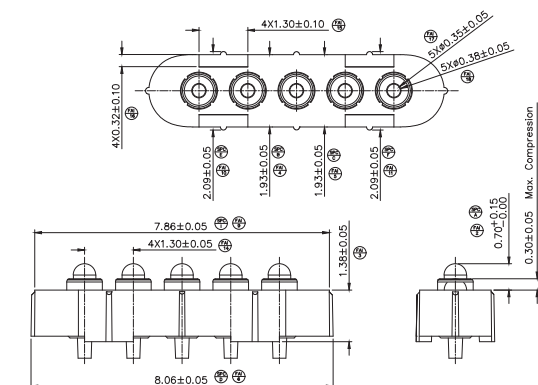


Length:	12.90 mm
Working Height:	12.10 mm
Pitch	6.50 mm
Current:	1 Amp
Contact Resistance:	50 mΩ
Spring Force:	105g ± 20g

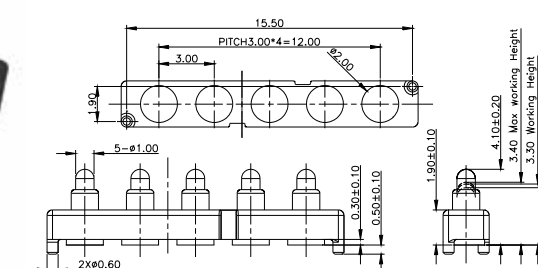
5 PINS



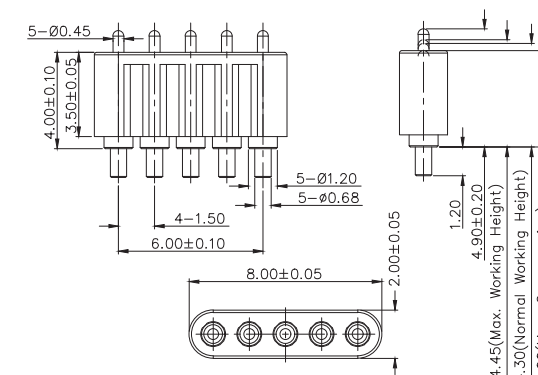
Length:	1.60 mm
Working Height:	1.20 mm
Pitch	2.20 mm
Current:	1 Amp
Contact Resistance:	100 mΩ
Spring Force:	60g ± 20g



Length:	2.08 mm
Working Height:	1.68 mm
Pitch	1.30 mm
Current:	1 Amp
Contact Resistance:	50 mΩ
Spring Force:	100g ± 20g



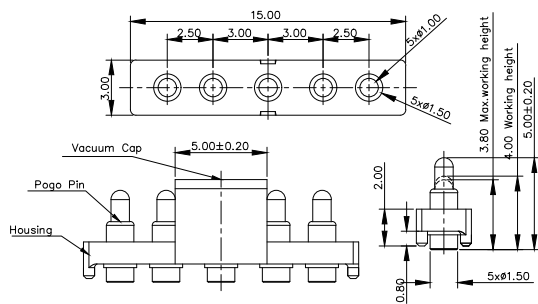
Length:	4.10 mm
Working Height:	3.30 mm
Pitch	3.00 mm
Current:	1 Amp
Contact Resistance:	50 mΩ
Spring Force:	80g ± 20%



Length:	4.90 mm
Working Height:	4.30 mm
Pitch	1.50 mm
Current:	2 Amps
Contact Resistance:	50 mΩ
Spring Force:	110g ± 20%

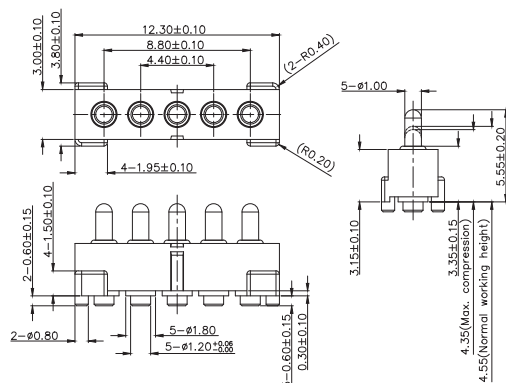
NON STANDARD CONNECTOR

5 PINS



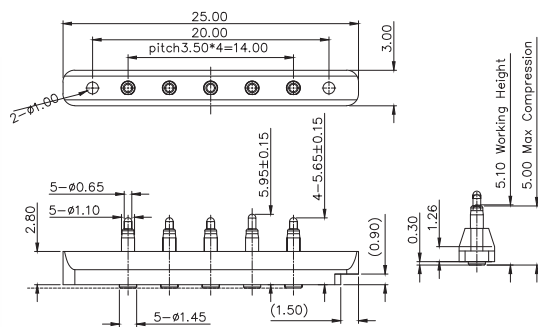
PN: F1371AA01-05A250MR

- Length: 5.00 mm
- Working Height: 4.00 mm
- Pitch: 2.50 mm
- Current: 1 Amp
- Contact Resistance: 100 mΩ
- Spring Force: 80g ± 20g



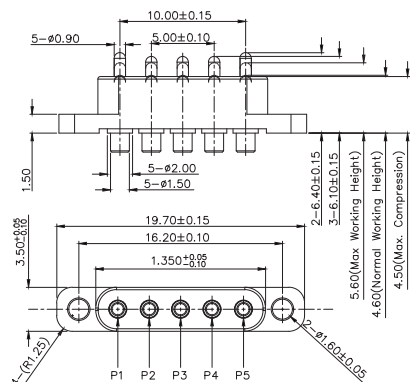
PN: P2761MP01-05E220MR

- Length: 5.55 mm
- Working Height: 4.55 mm
- Pitch: 2.20 mm
- Current: 1 Amp
- Contact Resistance: 50 mΩ
- Spring Force: 80g ± 20g



PN: P5362MF01-05A350MR

- Length: 5.65 / 5.95 mm
- Working Height: 5.10 mm
- Pitch: 3.50 mm
- Current: 2 Amps
- Contact Resistance: 50 mΩ
- Spring Force: 70g ± 20g

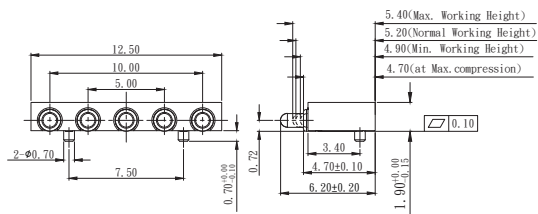


PN: P2673MF02-05R250HT

- Length: 6.10 / 6.41 mm
- Working Height: 4.60 mm
- Pitch: 2.50 mm
- Current: 2 Amps
- Contact Resistance: 50 mΩ
- Spring Force: 150g ± 20%

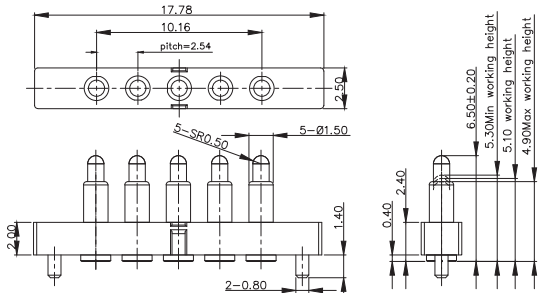
NON STANDARD CONNECTOR

5 PINS



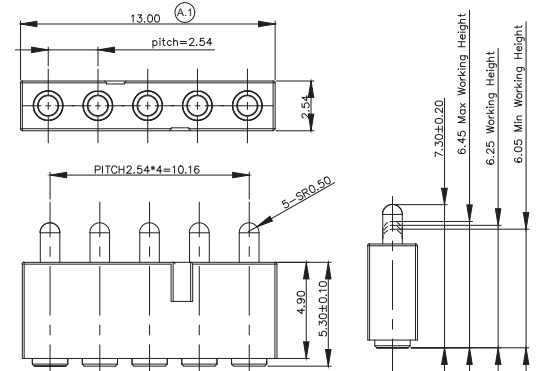
PN: R175AA05-05250RR

- Length: 6.20 mm
- Working Height: 5.20 mm
- Pitch: 2.50 mm
- Current: 2 Amps
- Contact Resistance: 50 mΩ
- Spring Force: 120g ± 20%



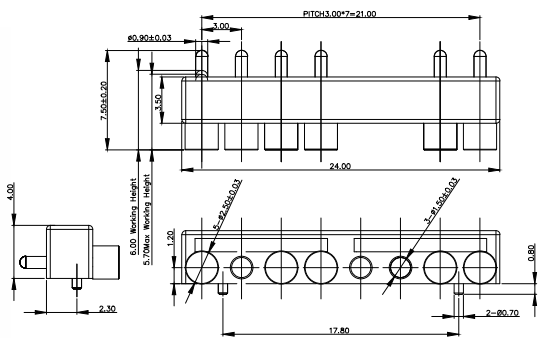
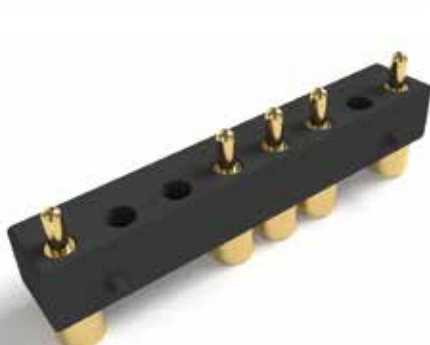
PN: P2037MF01-05J254MR

- Length: 6.50 mm
- Working Height: 5.10 mm
- Pitch: 2.54 mm
- Current: 2 Amps
- Contact Resistance: 50 mΩ
- Spring Force: 90g ± 20%



PN: P2315MF01-05L254MR

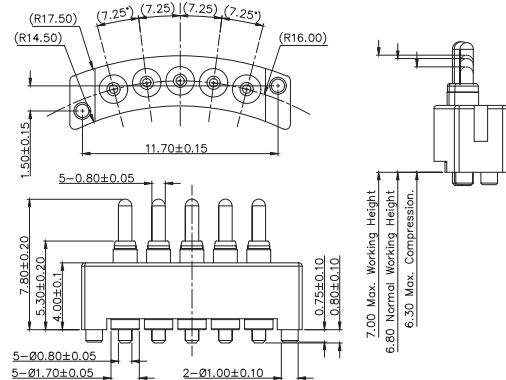
- Length: 7.30 mm
- Working Height: 6.25 mm
- Pitch: 2.54 mm
- Current: 5 Amps
- Contact Resistance: 20 mΩ
- Spring Force: 80g ± 20%



PN: F1601AA05-08G300HB

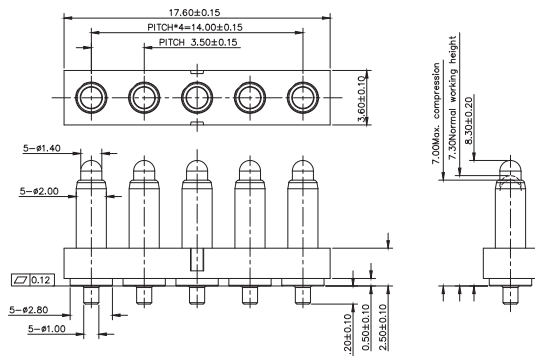
- Length: 7.50 mm
- Working Height: 6.00 mm
- Pitch: 3.00 mm
- Current: 2 Amps
- Contact Resistance: 50 mΩ
- Spring Force: 120g ± 20%

5 PINS



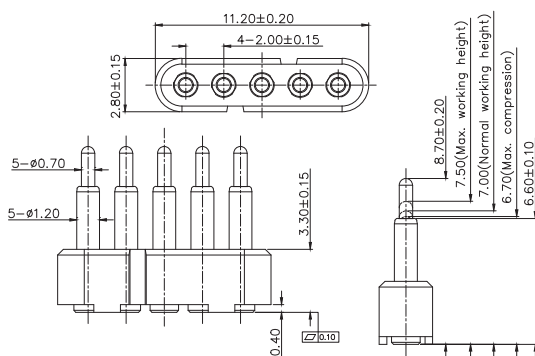
PN: P2698MP03-05A202MR

Length:	7.80 mm
Working Height:	6.80 mm
Pitch	2.02 mm
Current:	2 Amps
Spring Force:	30g ± 10g



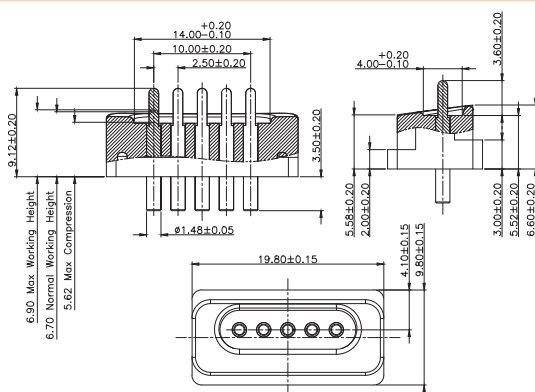
PN: P2811MP01-05E350MR

Length:	8.30 mm
Working Height:	7.30 mm
Pitch	3.50 mm
Current:	3 Amps
Contact Resistance:	50 mΩ
Spring Force:	95g ± 20g



PN: P6287MF02-05A200MR

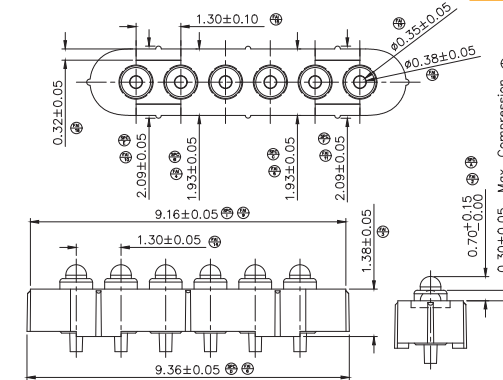
Length:	8.70 mm
Working Height:	7.00 mm
Pitch	2.00 mm
Current:	3~5 Amps
Contact Resistance:	50 mΩ
Spring Force:	120g ± 20%



PN: P3117MF01-05U250HT

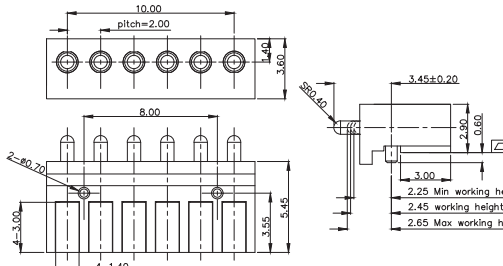
Length:	9.12 mm
Working Height:	6.70 mm
Pitch	2.50 mm
Current:	1 Amp
Spring Force:	100g \pm 20g

6 PINS



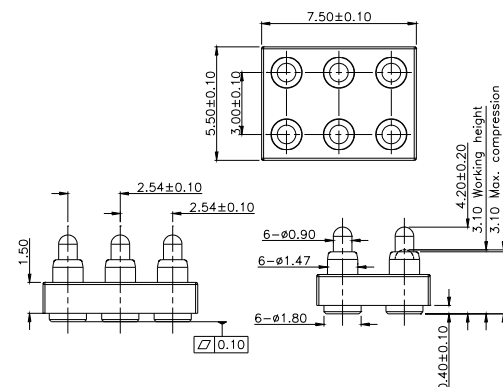
PN: P2288MP02-06B130HR

Length:	2.08 mm
Working Height:	1.68 mm
Pitch	1.30 mm
Current:	1 Amp
Contact Resistance:	100 mΩ
Spring Force:	50g ± 20g



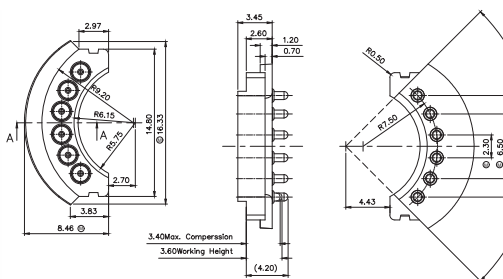
PN: P2526MR01-06F200HR

Length:	3.45 mm
Working Height:	2.45 mm
Pitch	2.00 mm
Current:	2 Amps
Contact Resistance:	50 mΩ
Spring Force:	70g ± 20%



PN: P3004MF01-06A300HR

Length:	4.20 mm
Working Height:	3.10 mm
Pitch	2.54 mm
Current:	1 Amp
Contact Resistance:	50 mΩ
Spring Force:	80g ± 20%

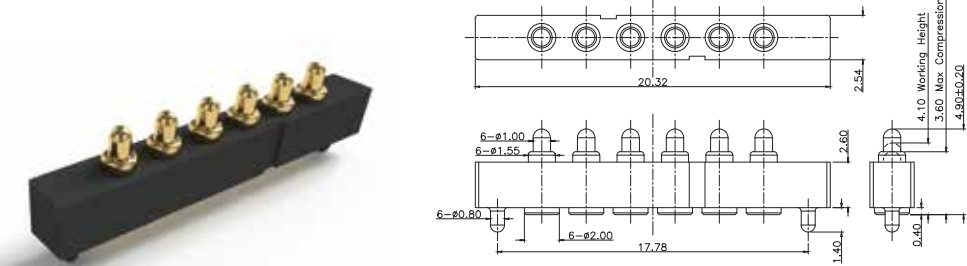


PN: P2106MP01-06B230HR

Length:	4.20 mm
Working Height:	3.60 mm
Pitch	1.85 mm
Current:	1 Amp
Contact Resistance:	50 mΩ
Spring Force:	90g ± 20%

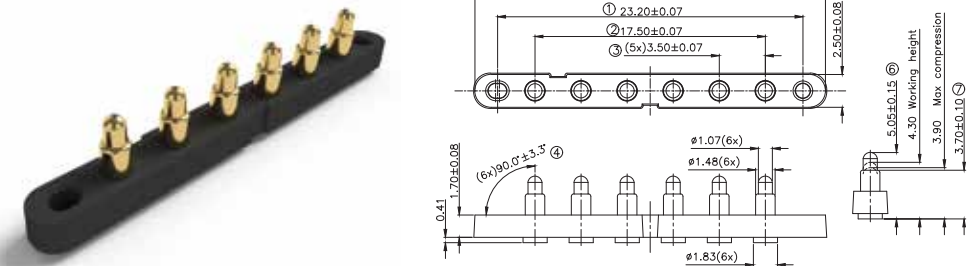
NON STANDARD
CONNECTOR

6 PINS



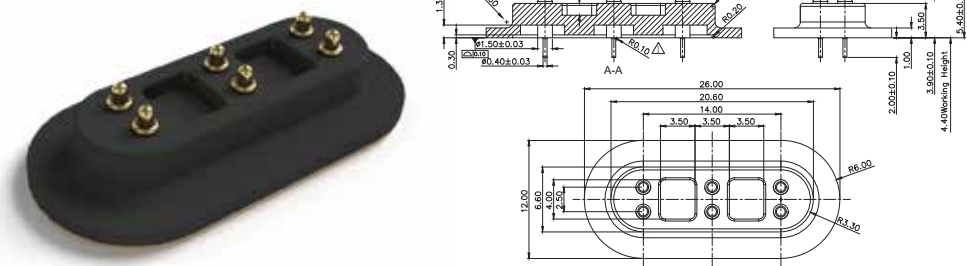
PN: P3110MF02-06S254MR

- Length: 4.90 mm
- Working Height: 4.10 mm
- Pitch: 2.54 mm
- Current: 1 Amp
- Contact Resistance: 50 mΩ
- Spring Force: 65g ± 20g



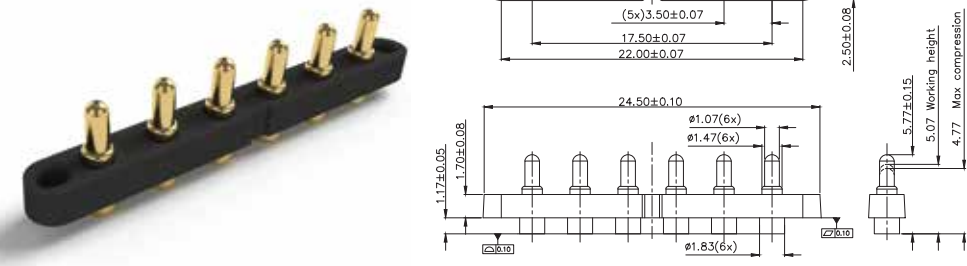
PN: F999AA02-06350BR

- Length: 5.05 mm
- Working Height: 4.30 mm
- Pitch: 3.50 mm
- Current: 2 Amps
- Contact Resistance: 100 mΩ
- Spring Force: 60g ± 20%



PN: P580AA03-06700PT

- Length: 5.40 mm
- Working Height: 4.00 mm
- Pitch: 2.50 mm
- Current: 1.5 Amps
- Contact Resistance: 50 mΩ
- Spring Force: 127g ± 30g

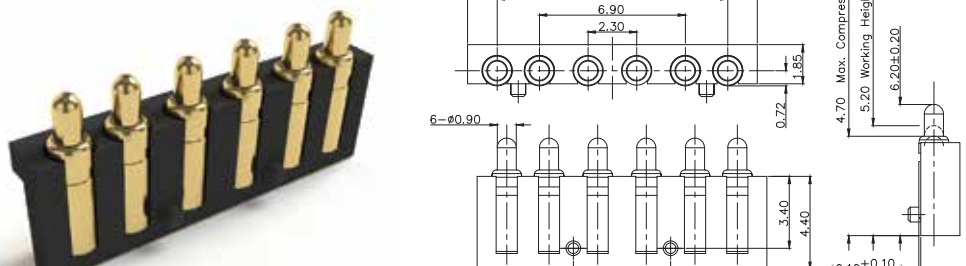


PN: P580AA03-06700PT

- Length: 5.77 mm
- Working Height: 5.07 mm
- Pitch: 3.00 mm
- Current: 2 Amps
- Contact Resistance: 100 mΩ
- Spring Force: 60g ± 20%

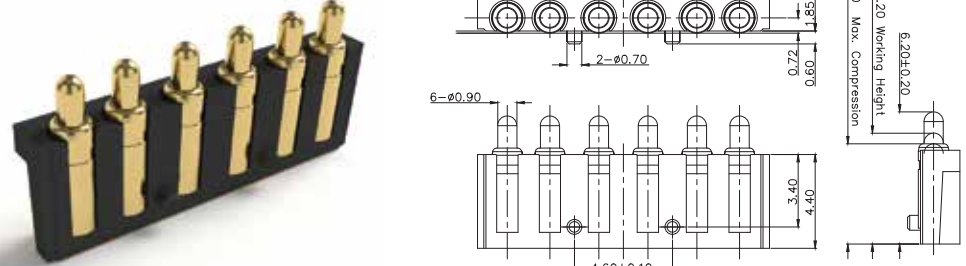
NON STANDARD
CONNECTOR

6 PINS



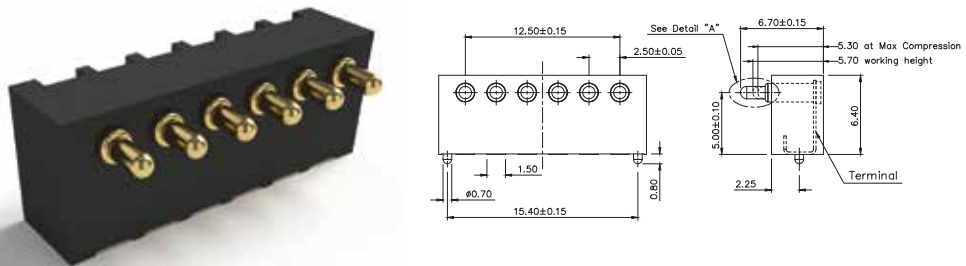
PN: R175AA05-06B200RR

- Length: 6.20 mm
- Working Height: 5.20 mm
- Pitch: 2.30 mm
- Current: 1.5 Amps
- Contact Resistance: 50 mΩ
- Spring Force: 120g ± 20%



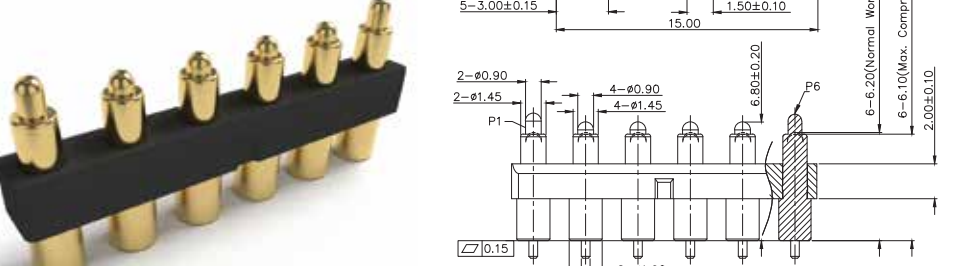
PN: R175AA08-06B200RR

- Length: 6.20 mm
- Working Height: 5.20 mm
- Pitch: 2.30 mm
- Current: 2 Amps
- Contact Resistance: 50 mΩ
- Spring Force: 120g ± 20%



PN: R035AA06-06250RR

- Length: 6.70 mm
- Working Height: 5.70 mm
- Pitch: 2.50 mm
- Current: 1 Amp
- Contact Resistance: 50 mΩ
- Spring Force: 120g ± 20%

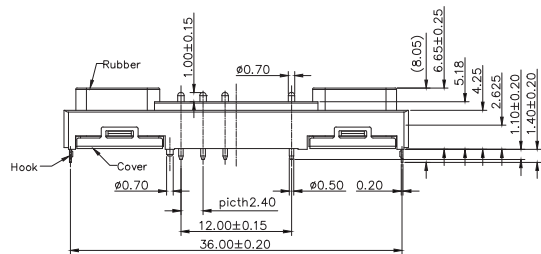


PN: P3588MP02-06B300MR

- Length: 6.80 / 7.30 mm
- Working Height: 6.20 mm
- Pitch: 3.00 mm
- Current: 2 Amps
- Contact Resistance: 50 mΩ
- Spring Force: 110g ± 20%

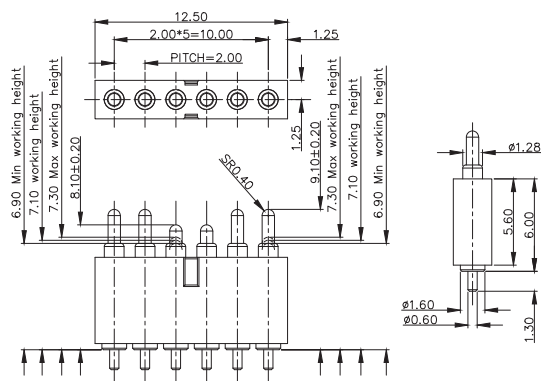
NON STANDARD CONNECTOR

6 PINS



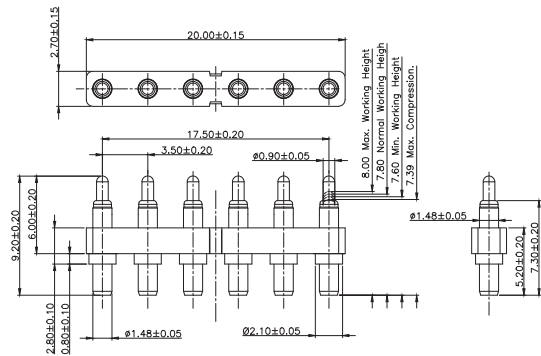
PN: P2197MP01-06C240MR

- Length: 7.28 mm
- Working Height: 6.48 mm
- Pitch: 2.40 mm
- Current: 2 Amps
- Contact Resistance: 50 mΩ
- Spring Force: 90g ± 20%



PN: P2294MP01-06E200MR

- Length: 8.10 / 9.10 mm
- Working Height: 7.10 mm
- Pitch: 2.00 mm
- Current: 2 Amps
- Contact Resistance: 50 mΩ
- Spring Force: 70g ± 20%

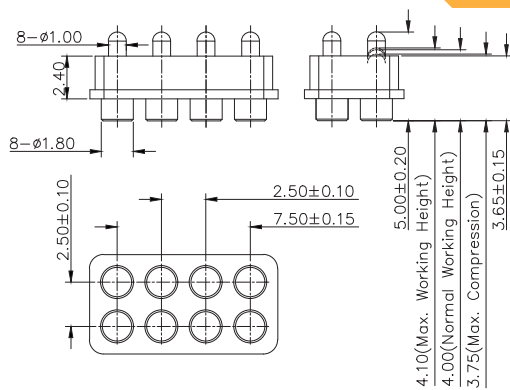


PN: P3783MP01-06L350MR

- Length: 9.20 mm
- Working Height: 7.80 mm
- Pitch: 3.50 mm
- Current: 5 Amps
- Contact Resistance: 50 mΩ
- Spring Force: 100g ± 20g

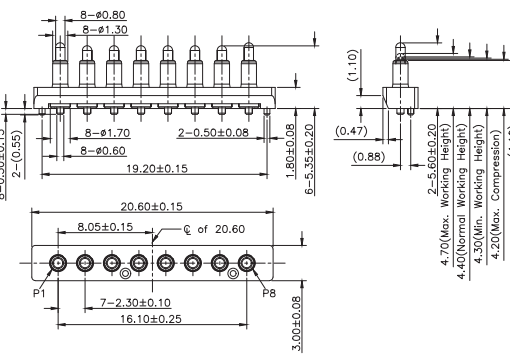
NON STANDARD CONNECTOR

8 PINS



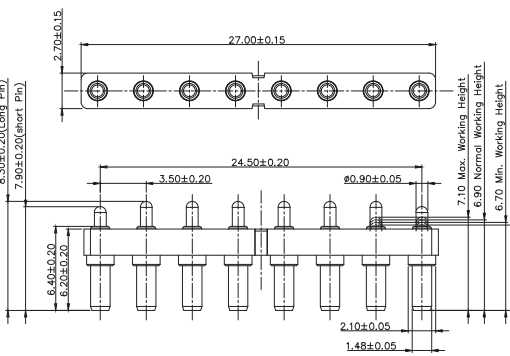
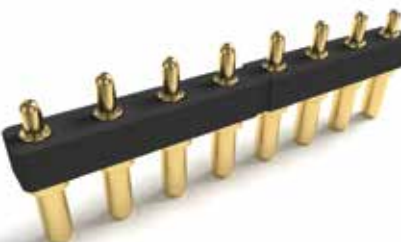
PN: P3728MF01-08P250HR

- Length: 5.00 mm
- Working Height: 4.00 mm
- Pitch: 2.50 mm
- Current: 1 Amp
- Contact Resistance: 50 mΩ
- Spring Force: 80g ± 20g



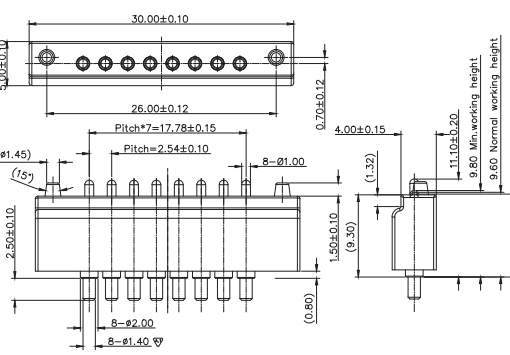
PN: P3395MP03-08C230MR

- Length: 5.60 / 5.35mm
- Working Height: 4.40 mm
- Pitch: 2.30 mm
- Current: 1 Amp
- Contact Resistance: 50 mΩ
- Spring Force: 105g ± 20g



PN: P2613MP01-08E350MR

- Length: 7.90 / 8.30 mm
- Working Height: 6.90 mm
- Pitch: 3.50 mm
- Current: 2 Amps
- Contact Resistance: 50 mΩ
- Spring Force: 110g ± 20g

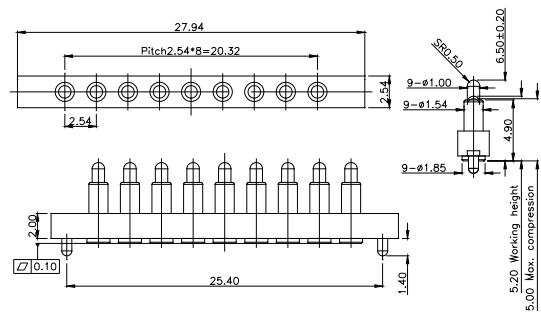


PN: P1933AA01-08C254HT

- Length: 11.10 mm
- Working Height: 9.60 mm
- Pitch: 2.54 mm
- Current: 2 Amps
- Contact Resistance: 50 mΩ
- Spring Force: 120g ± 20%

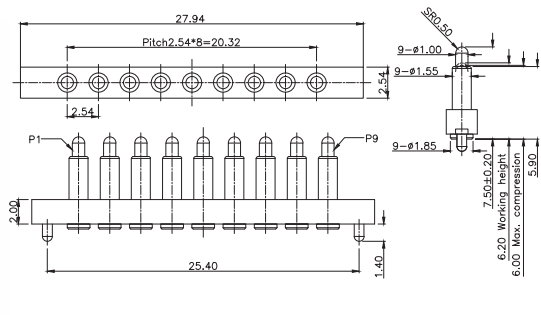
NON STANDARD
CONNECTOR

9-11 PINS



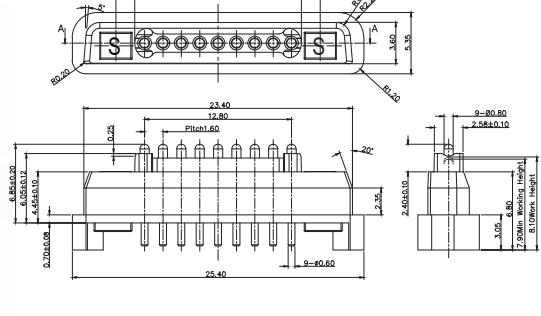
PN: P2839MF01-09F254MR

- Length: 6.50 mm
- Working Height: 5.20 mm
- Pitch: 2.54 mm
- Current: 1 Amp
- Contact Resistance: 50 mΩ
- Spring Force: 100g±20%



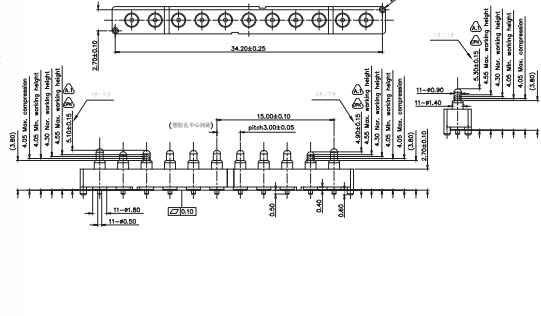
PN: P2879MF01-09F254MR

- Length: 7.50 mm
- Working Height: 6.20 mm
- Pitch: 2.54 mm
- Current: 1 Amp
- Contact Resistance: 50 mΩ
- Spring Force: 100g±20%



PN: S497AA03-09160H

- Length: 9.20 mm
- Working Height: 8.10 mm
- Pitch: 1.60 mm
- Current: 1 Amp
- Contact Resistance: 50 mΩ
- Spring Force: 40g±20%

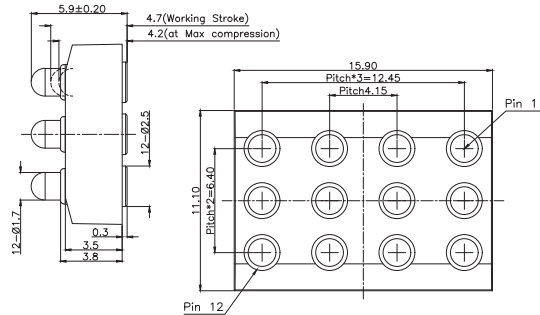


PN: P5311MF02-11A300MR

- Length: 4.90 / 5.10 / 5.30 mm
- Working Height: 4.30 / 4.30 / 4.30 mm
- Pitch: 3.00 mm
- Current: 1 Amp
- Contact Resistance: 50 mΩ
- Spring Force: 80g±20g

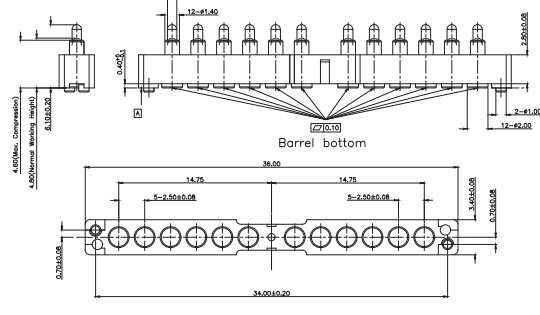
NON STANDARD
CONNECTOR

12-18 PINS



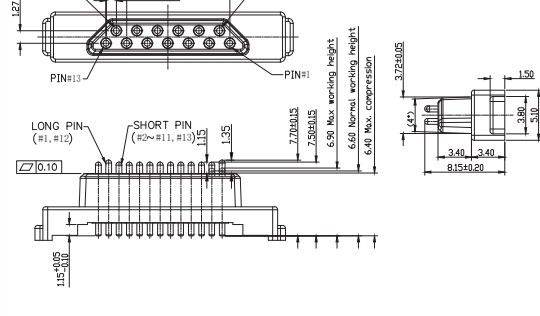
PN: P2976MF01-12A415HR

- Length: 5.90 mm
- Working Height: 4.70 mm
- Pitch: 3.20 mm
- Current: 2 Amps
- Contact Resistance: 50 mΩ
- Spring Force: 110g±20g



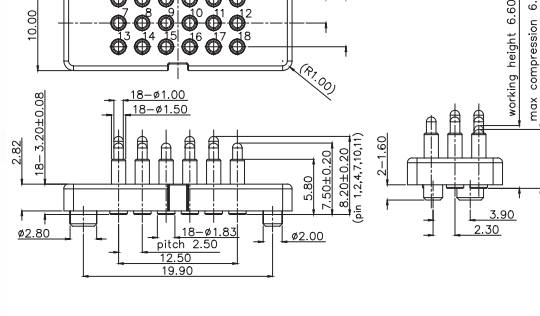
PN: P3303MF01-12A250MR

- Length: 6.10 mm
- Working Height: 4.80 mm
- Pitch: 2.50 mm
- Current: 1 Amp
- Contact Resistance: 100 mΩ
- Spring Force: 60g±20g



PN: P1179AA17-13B210HR

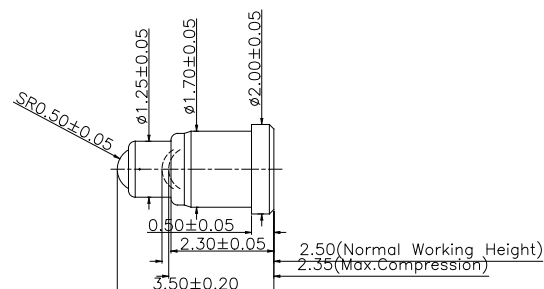
- Length: 7.50 / 7.70 mm
- Working Height: 6.60
- Pitch: 1.05 mm
- Current: 2 Amps
- Contact Resistance: 50 mΩ
- Spring Force: 140g±20%



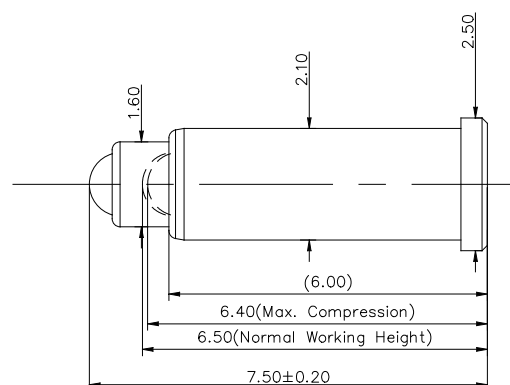
PN: P3673MF01-18A250MR

- Length: 7.50 / 8.20 mm
- Working Height: 6.60 mm
- Pitch: 2.50 mm
- Current: 1 Amp
- Contact Resistance: 50 mΩ
- Spring Force: 130g±20g

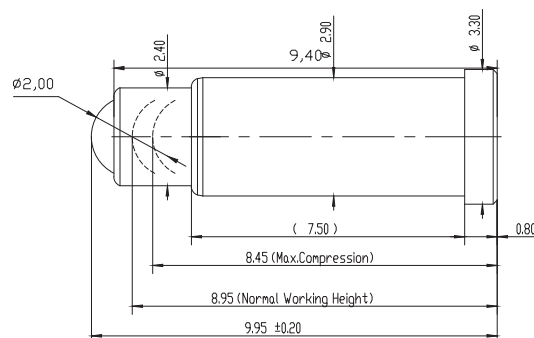
BALL POINT



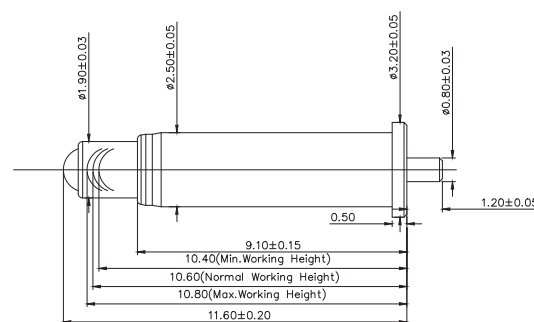
Length:	3.50 mm
Working Height:	2.50 mm
Current:	2 Amps
Contact Resistance:	100 mΩ
Spring Force:	60g ± 15g
Durability:	2,000



Length:	7.50 mm
Working Height:	6.50 mm
Current:	1 Amp
Contact Resistance:	100 mΩ
Spring Force:	90g ± 20g
Durability:	10,000

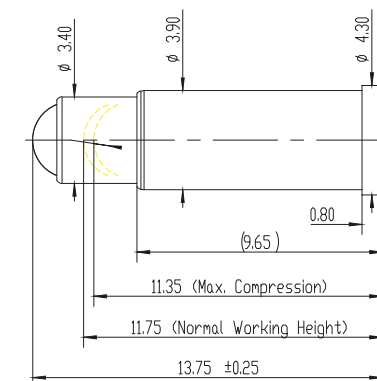


Length:	9.95 mm
Working Height:	8.95 mm
Current:	1 Amp
Contact Resistance:	100 mΩ
Spring Force:	90g ± 90g
Durability:	10,000

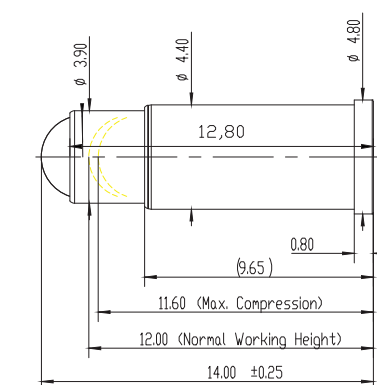


Length:	11.60 mm
Working Height:	10.60 mm
Current:	2 Amps
Contact Resistance:	50 mΩ
Spring Force:	90g ± 20g
Durability:	10,000

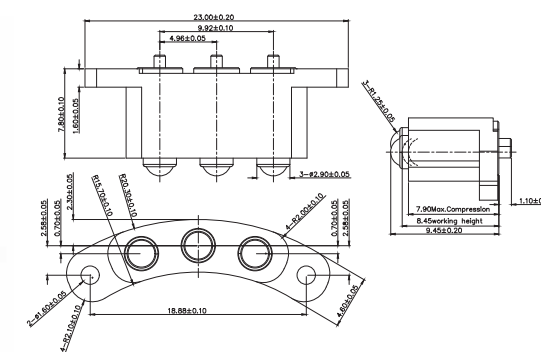
BALL POINT



Length:	13.75 mm
Working Height:	11.75 mm
Current:	1 Amp
Contact Resistance:	100 mΩ
Spring Force:	90g ± 20g
Durability:	10,000

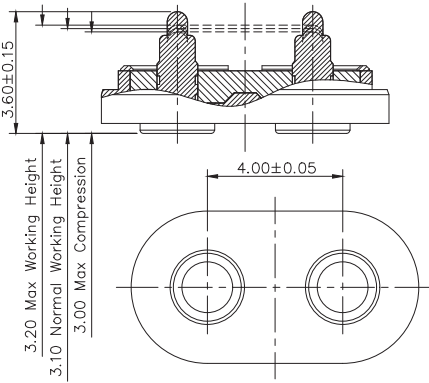


Length:	14.00 mm
Working Height:	12.00 mm
Current:	1 Amp
Contact Resistance:	100 mΩ
Spring Force:	90g ± 20g
Durability:	10,000



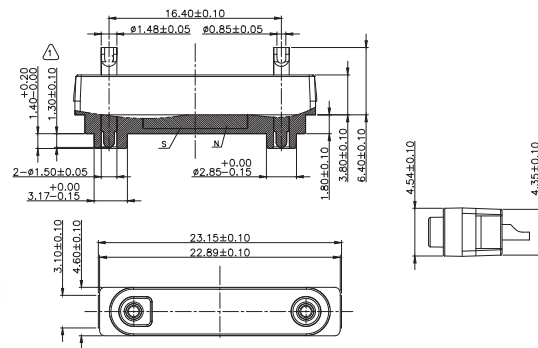
Length:	9.45 mm
Working Height:	8.45 mm
Pitch	4.96 mm
Current:	1 Amp
Contact Resistance:	100 mΩ
Spring Force:	60g ± 15g
Durability:	200,000

WATER PROOF



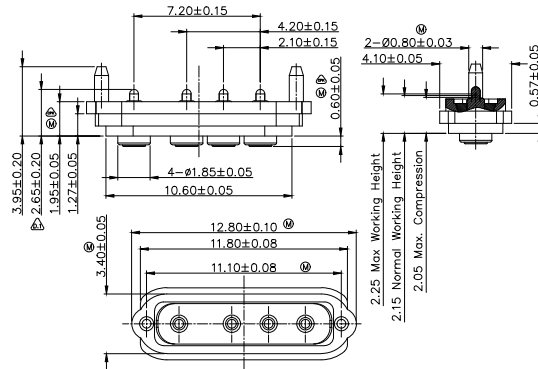
PN: P5562MP01-02B400HB

Length:	3.60 mm
Working Height:	3.10 mm
Pitch	4.00 mm
Current:	1 Amps
Contact Resistance:	100 mΩ
Spring Force:	80g±20g
IP Factor:	IPX8



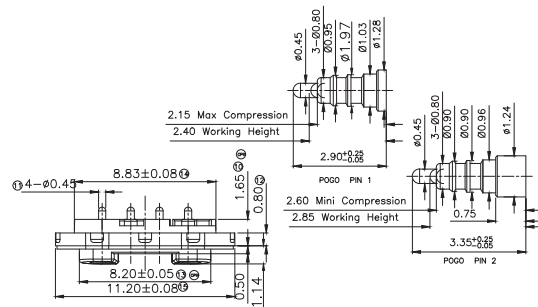
PN: P2859MS01-02B164HT

Length:	9.60 mm
Working Height:	9.50 mm
Pitch	16.40 mm
Current:	5 Amps
Contact Resistance:	50 mΩ
Spring Force:	110g ± 20%
IP Factor:	IPX7



PN: P5320MF01-04A210HT

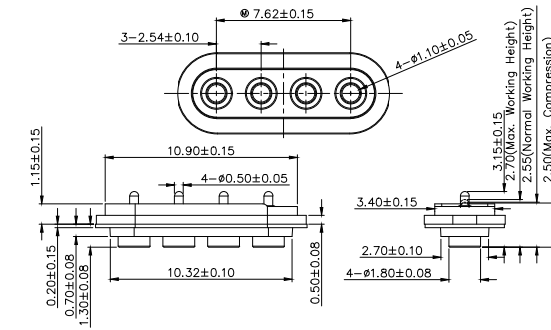
Length:	2.65 mm
Working Height:	2.15 mm
Pitch	2.10 mm
Current:	1.5 Amps
Contact Resistance:	50 mΩ
Spring Force:	80g±20g
IP Factor:	IPX7



PN: P2988MM03-04C180HB

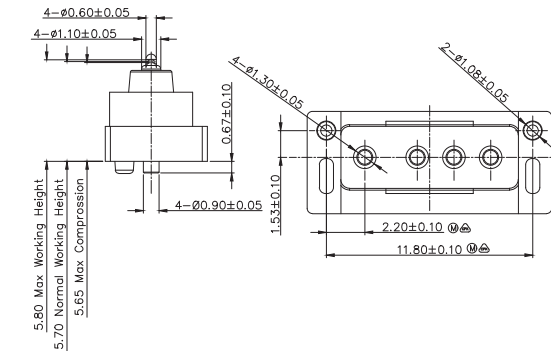
Length:	2.90 / 3.35 mm
Working Height:	2.40 / 2.85 mm
Pitch	1.80 mm
Current:	1 Amp
Contact Resistance:	50 mΩ
Spring Force:	60g ± 20g

WATER PROOF



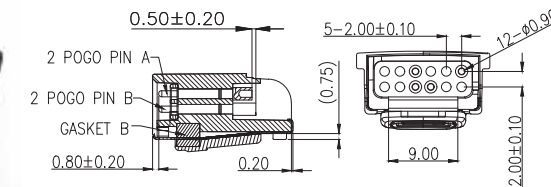
PN: P5875MF01-04A250HT

Length:	3.15 mm
Working Height:	2.55 mm
Pitch	2.54 mm
Current:	1 Amp
Contact Resistance:	50 mΩ
Spring Force:	75g±20g
IP Factor:	IPX7



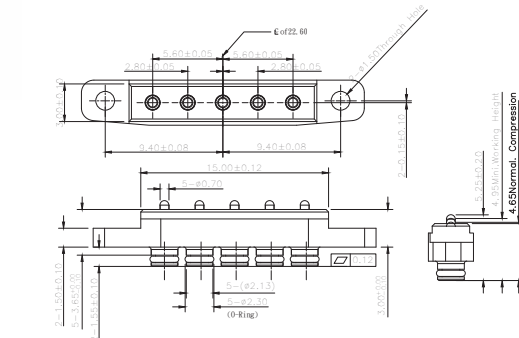
PN: P3613MP05-04A210MR

Length:	6.13 mm
Working Height:	5.70 mm
Pitch	2.10 mm
Current:	1 Amp
Contact Resistance:	50 mΩ
Spring Force:	50g ± 15g



PN: F047AA00-04200ST

Length:	18.00 mm
Working Height:	17.50 mm
Pitch	2.0 mm
Current:	1 Amp
Contact Resistance:	100 mΩ
Spring Force:	80g ± 20%

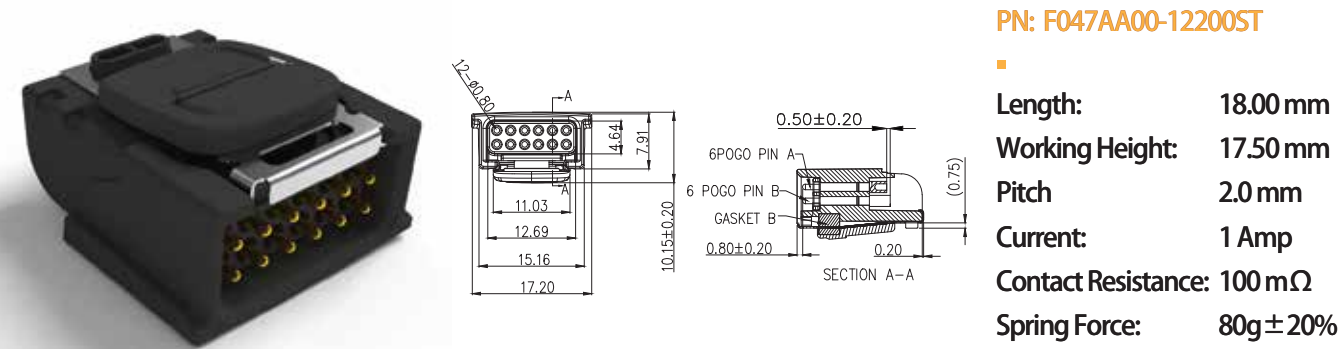
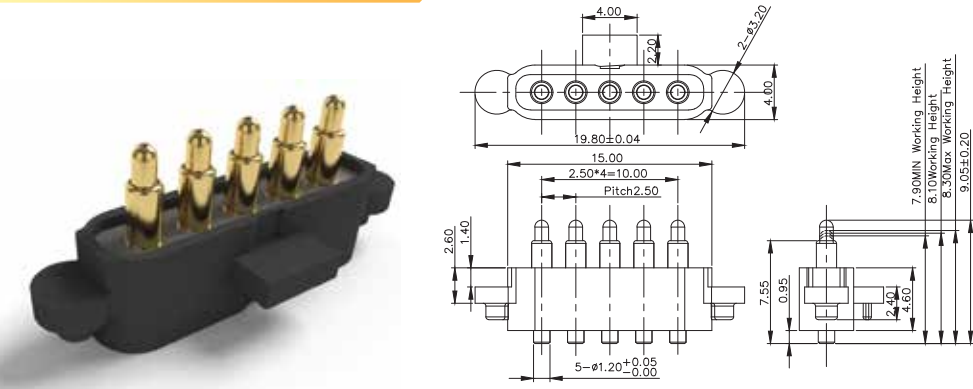


PN: P2352MF01-05A280HT

Length:	5.25 mm
Working Height:	4.95 mm
Pitch	2.80 mm
Current:	2 Amps
Contact Resistance:	50 mΩ
Spring Force:	95g ± 20%

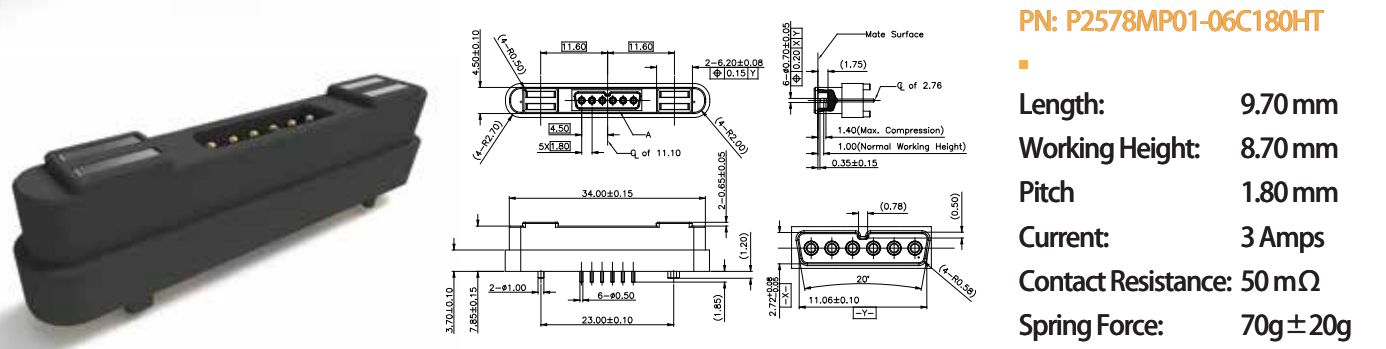
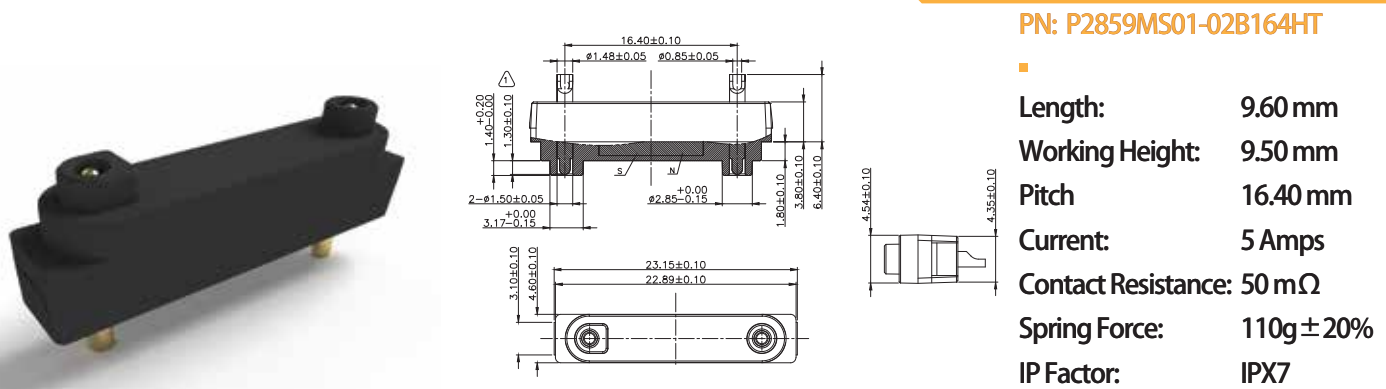
NON STANDARD
CONNECTOR

WATER PROOF

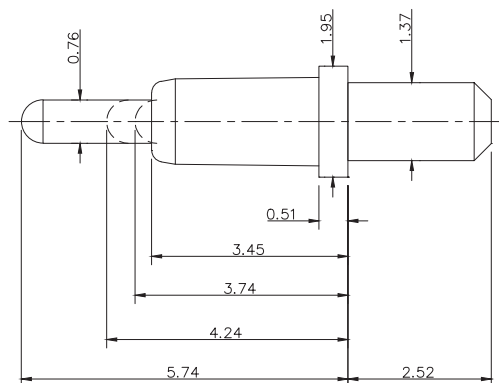


NON STANDARD
CONNECTOR

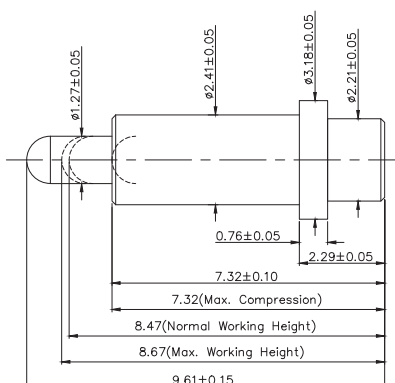
MAGNETIC



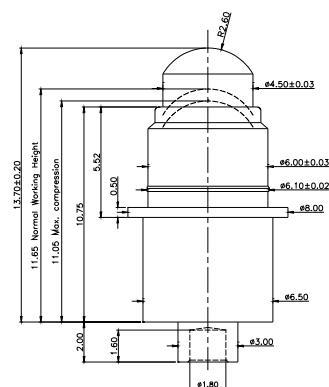
HIGH CURRENT



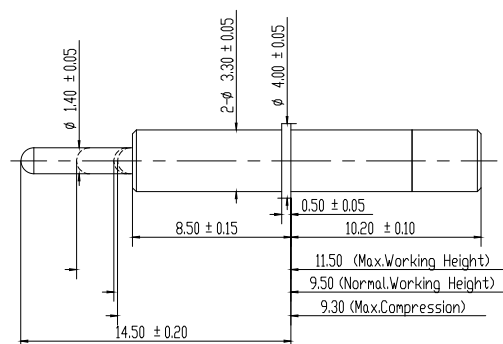
Length:	5.74 mm
Working Height:	4.24 mm
Current:	8 Amps
Contact Resistance:	50 mΩ
Spring Force:	100g ± 20%



Length:	9.61 mm
Working Height:	8.47 mm
Current:	9 Amps
Contact Resistance:	30 mΩ
Spring Force:	100g ± 20%

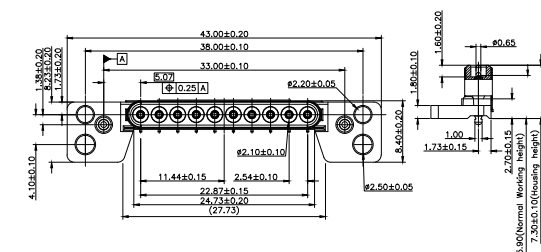


Length: 13.70 mm
Working Height: 11.65 mm
Current: 8 Amps
Contact Resistance: 50 mΩ
Spring Force: 200g ± 20%

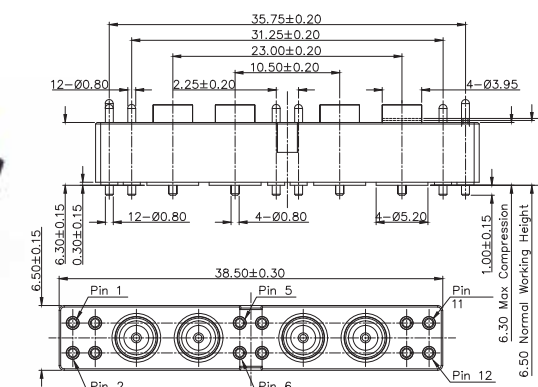


Length: 14.50 mm
Working Height: 9.50 mm
Current: 12 Amps
Contact Resistance: 50 mΩ
Spring Force: 150g ± 20%

HIGH FREQUENCY



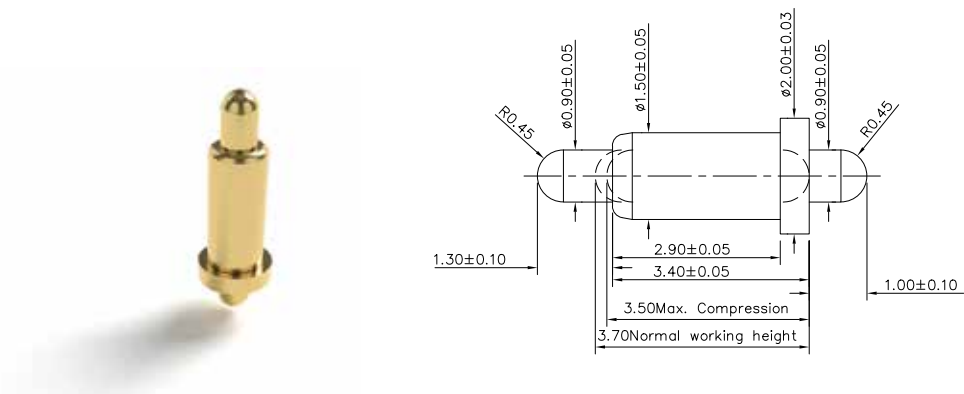
Length:	7.30 mm
Working Height:	5.90 mm
Pitch:	2.54 mm
Current:	5 Amps
Contact Resistance:	50 mΩ
Spring Force:	100g ± 20g



Length:	8.60 mm
Working Height:	6.50 mm
Pitch:	2.25 mm
Current:	2 Amps
Contact Resistance:	50 mΩ
Spring Force:	100g ± 20%

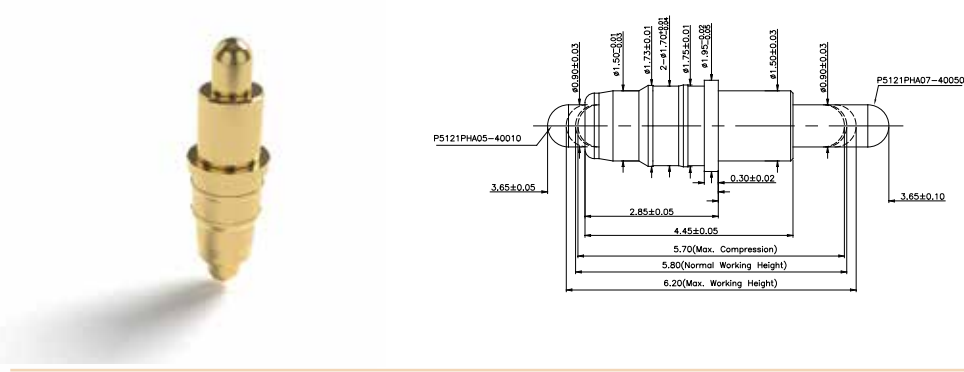
NON STANDARD CONNECTOR

DOUBLE ENDED



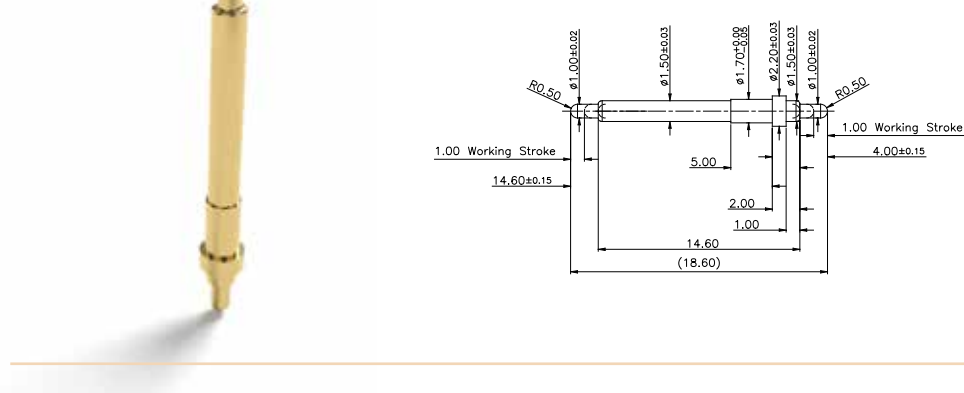
PN: P2573DP01

- Length: 5.70 mm
- Working Height: 3.70 mm
- Current: 1 Amp
- Contact Resistance: 100 mΩ
- Spring Force: 100g ± 20%



PN: P5650FH01

- Length: 7.30 mm
- Working Height: 5.80 mm
- Current: 2 Amps
- Contact Resistance: 30 mΩ
- Spring Force: 85g ± 15g

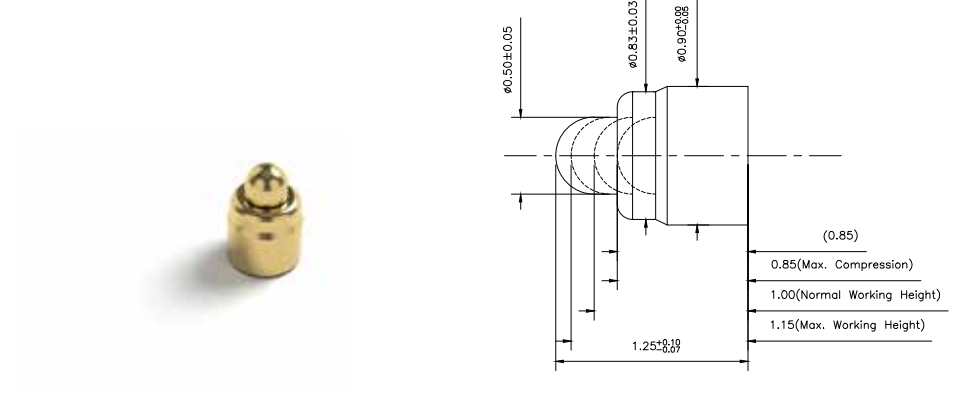


PN: D406AA01

- Length: 18.60 mm
- Working Height: 16.60 mm
- Current: 1 Amp
- Contact Resistance: 100 mΩ
- Spring Force: 60 g ± 20%

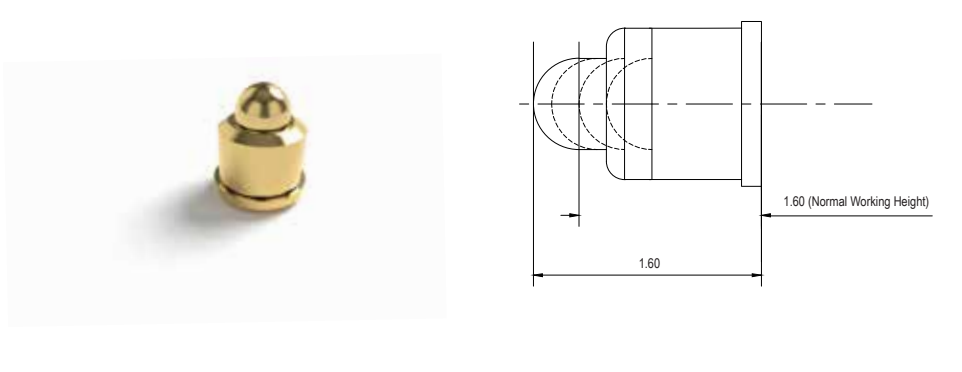
NON STANDARD CONNECTOR

ULTRA SMALL PIN



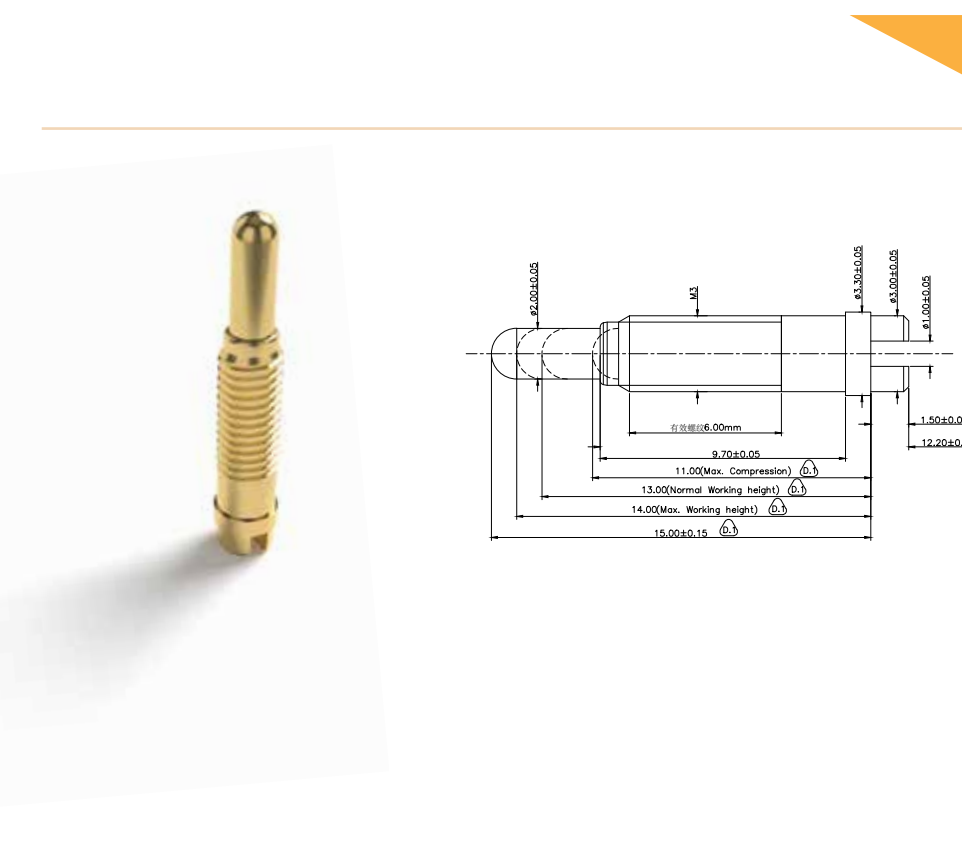
PN: P6925FP03

- Length: 1.25 mm
- Working Height: 1.00 mm
- Current: 300m Amp
- Contact Resistance: 100 mΩ
- Spring Force: 35g ± 20%



PN: F254AA01

- Length: 1.60 mm
- Working Height: 1.20 mm
- Current: 300m Amp
- Contact Resistance: 100 mΩ
- Spring Force: 40g ± 20%



PN: P07417PH1

- Length: 15.00 mm
- Working Height: 13.00 mm
- Current: 1 Amps
- Contact Resistance: 50 mΩ
- Spring Force: 250g ± 20%

SCREW PIN

Testing Items

Environmental

- Waterproof
- Humidity Test
- Salt Spray
- Thermal Impact
- Resistance to Solder Heat
- Vibration

Electrical

- Contact Resistance
- Insulation
- HIPOT
- Rated Current

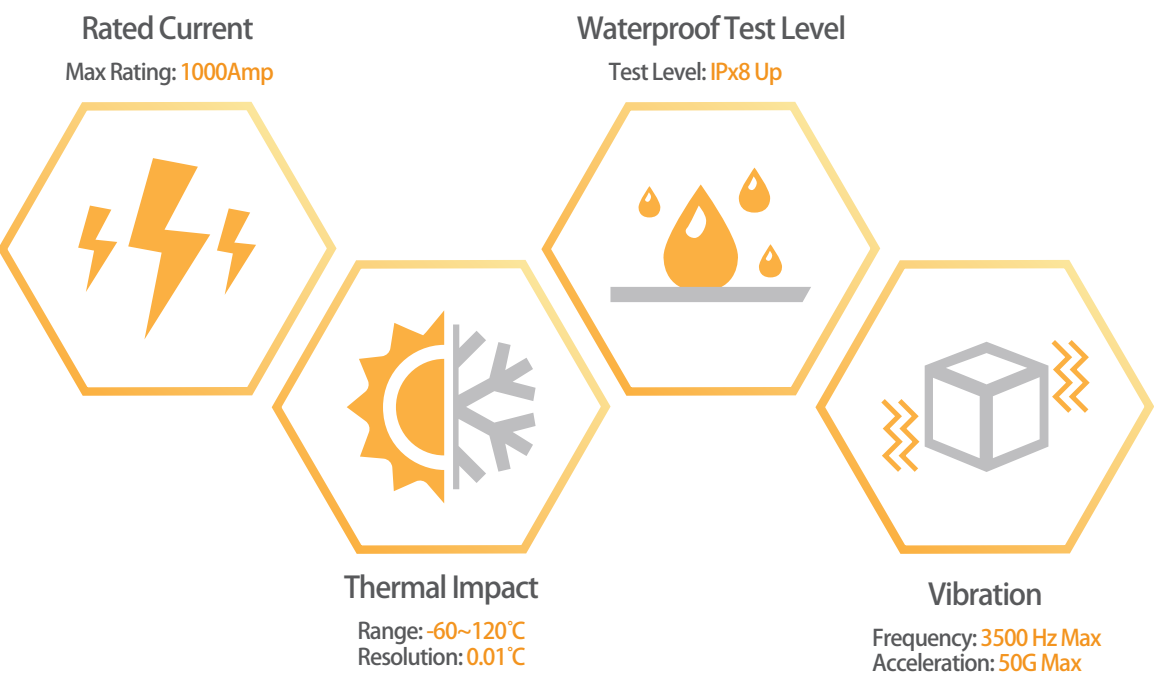
Mechanical

- Retention Force
- Life Cycle
- Vibration
- Mechanical Shock

Other

- Drop
- Soldering Side Force
- Solderability

Testing Equipment



ISO 9001: 2015

Quality Management Systems

ISO 14001: 2015

Environmental Management Systems

IATF 16949: 2016

Automotive Quality Management Systems

QC 080000

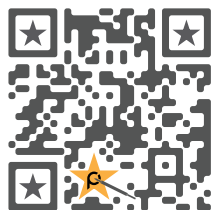
Hazardous Substance Process Management

Quality Assurance





C.C.P. CONTACT PROBES



Dongguan
+86-769-85151668

Kunshan
+86-512-57378981

Beijing
+86-10-53856584

Taipei
+886-2-29612525

San Jose
+1-669-224-9157

Shenzhen
+86-755-82794229

Kaohsiung
+886-7-3601161

Frankfurt
+49 171 3669549

Chengdu
+86-28-87440813

Zhubei
+886-3-5506368

Bangalore
+91-7619689680

Hongkong
+852-23014671

www.ccpcontactprobes.com
ccp_service@pccp.com.tw