



CCP CONTACT PROBES Co., Ltd.

COMPANY PROFILE

Introduction of CCP Group



C.C.P. Contact Probes Co., Ltd.

@ Taipei County

- Opened in 1983
- Capital: 18 million USD
- Employees: 150
- Stock: TW.6217 (Jan 9, 2003)

Focusing on product lines about semiconductor industry
IC Testing pins, IC sockets

Dong Guan C.C.P. Contact Probes Co., Ltd.

@ Humen Town, DongGuan City

- Opened in the end of 2000
- Capital: 13 million USD
- Employees: 550
- Production base in China

Focusing on design and production of pogo pin connectors
and traditional probes

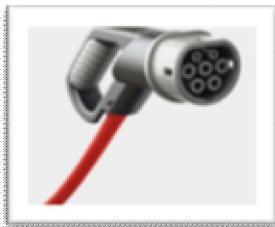
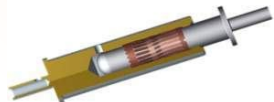
2014 CCP Product Lines



Pogo pin connector



Customized Connector



Crown Spring
Connector

CCP-C

CCP-T

Customized Design Mass Production

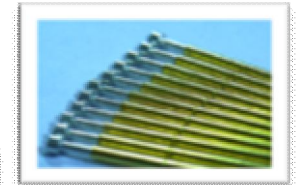
- Customization Design Process
- Supply Chain Management Skills
- Quality Control Process
- Strong Financial Ability
- Screwing Parts Knowhow
- Raw Material Development
- Plating Technology

CCP-A

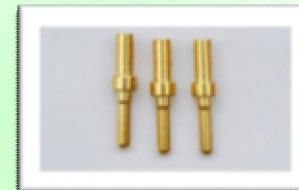
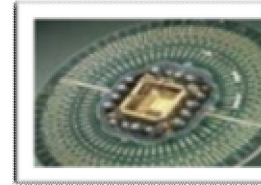
CCP-I



IC Testing Pins



PCB Testing



Contact Pins



Kovar Alloy



We provide “Customization Service” Flexible production line – high mix/low volume manufacturing

- Strong Brand Name - “CCP” is shown up in the market for 30 years
- Quality Oriented with Reasonable Price
- Instant and Flexible Service
- Automation : Assembly – Inspection - Package

All of our products are RoHS compliant and Halogen-free .

- AFAQ ISO 9001: 2008 Certification
- IECQ QC080000 Certification
- ISO 14000 : 2011 Certification
- TS16949

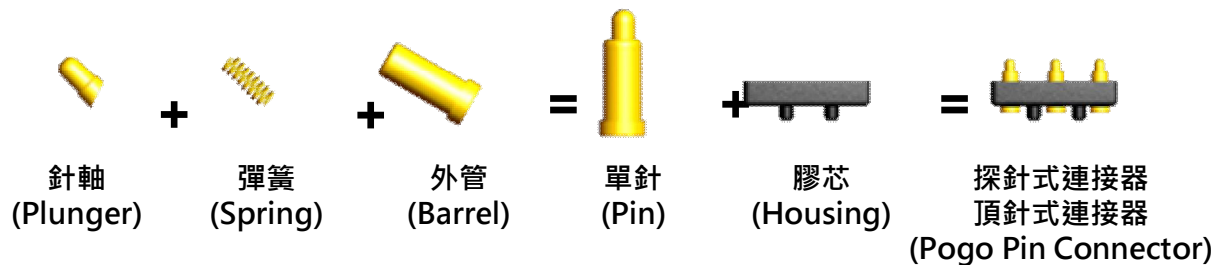


Introduction of Pogo Pin Connector

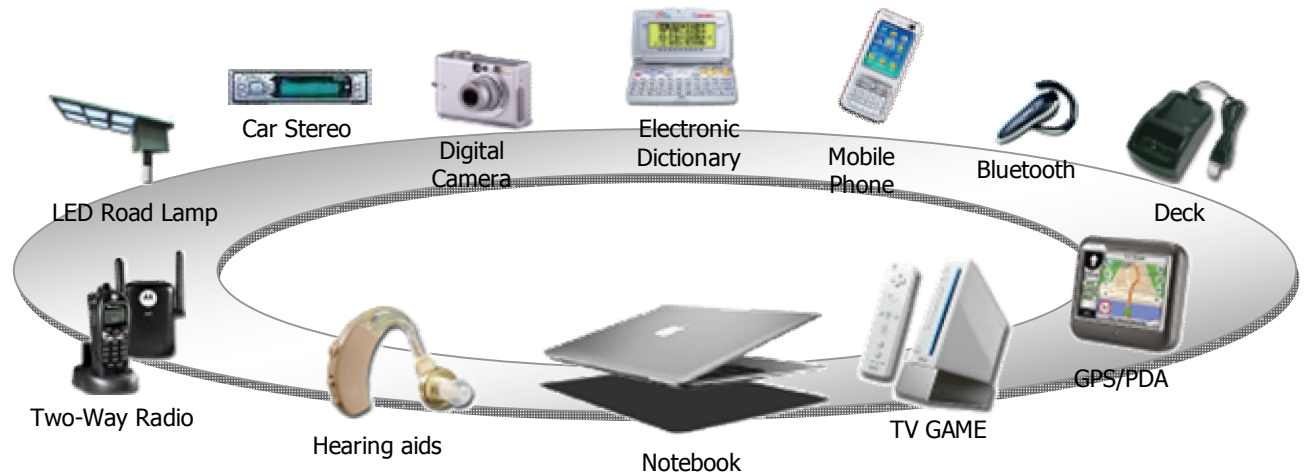
a device used in electronics to establish a connection between two printed circuit boards

Pogo Pin Connector is composed of plunger, spring, barrel and other plastic or metal components.

POGO PIN
CONNECTOR



1. 壽命長 (Long life cycle : 100,000 times)
2. 免開模，適合客製化 (No tooling fee, easy to customize)
3. 彈力可以準確的衡量和調整 (Adjustable and measurable spring force)
4. 減省空間，並且給設計師更有彈性的配置結構 (Save space: help mechanical engineer easily allocate components on PCB)
5. 間距小 (Fine pitch)
6. 提供客戶多原性的生產模式：**SMT自動生產、插件...** (Flexible manufacturing ways: SMT, plug-in...)
7. 高頻解決方案可達 **6G** (Good performance on RF solution)
8. **RoHS and Halogen Free**



Pogo Pin Connector Applications –

Power solution for Ultra Book



C

Cable Connector

用途 (Usage)

電源連接 (power connector, over 2amp)

好處 (Advantage)

磁鐵式吸附 (Magnet Solution)

拔插容易 (Easy to plug)

壽命長 (Long life)



Mag-Safe 電源轉換器



由於電源線的接頭是磁性的，因此如果有人不小心絆到電源線，它會俐落的自動脫離機身，而 Ultra Book 則會安全的留在原來的位置上。

The MagSafe connector is held in place magnetically. As a result, if it is tugged on—for instance, by someone tripping over the cord—it comes out of the socket safely, without damaging it or the computer or potentially pulling the computer off of a table or desk.



Pogo Pin Connector Applications

- Usage on Board to Board

B Board connector

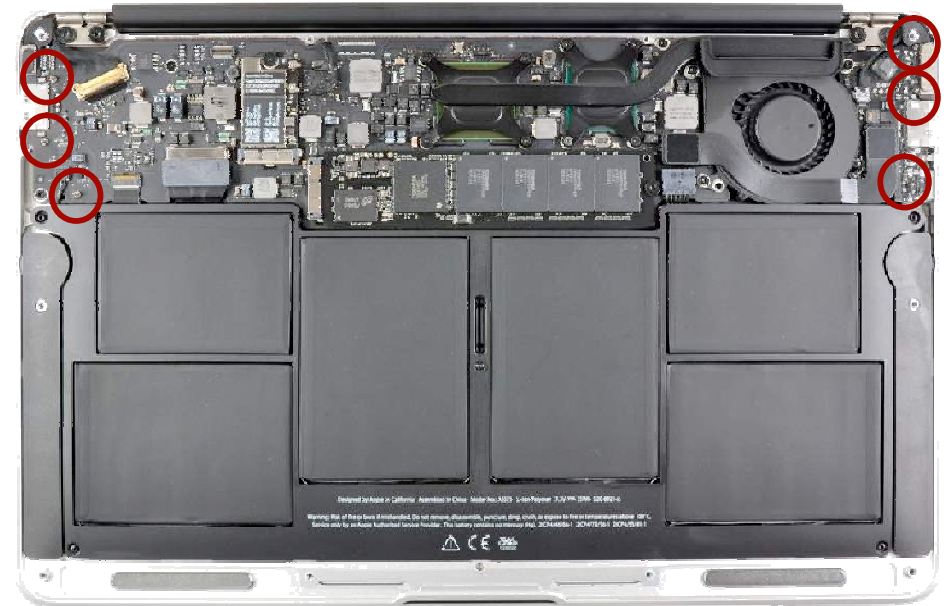


用途 (Usage)

1. EMI

好處 (Advantage)

1. Super lower profile
2. SMT



The mother board of notebook is smaller than other NB. Pitch between part and part is very limited to put other solutions.

Pogo Pin Connector Applications – Antenna Connector for Tablet PC and Mobile Phone



B Board Connector

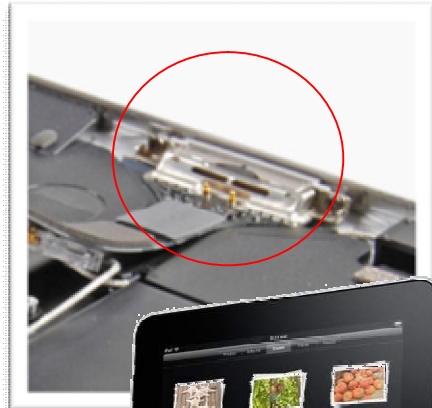


用途 (Usage)

1. 天線 (Antenna) 2. 按鍵 (button)

好處 (Advantage)

1. 空間小 (Fine pitch to save space)
2. SMT



Pogo Pin Connector Applications – Battery Connector for 4G Mobile Phone



B

Board Connector



用途 (Usage)

電池針 (Battery Connector)

好處 (Advantage)

1. 空間小 (Fine pitch to save space)
2. 大



Pogo Pin Connector Applications

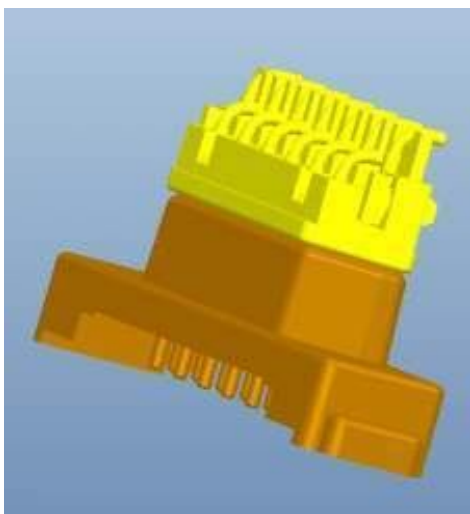
Hinge docking Connector for transform Notebook



B Board Connector

用途 (Usage)

Pad with Keyboard connection

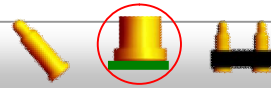


Pogo Pin Connector Applications

Keyboard Connector for Tablet



B Board Connector

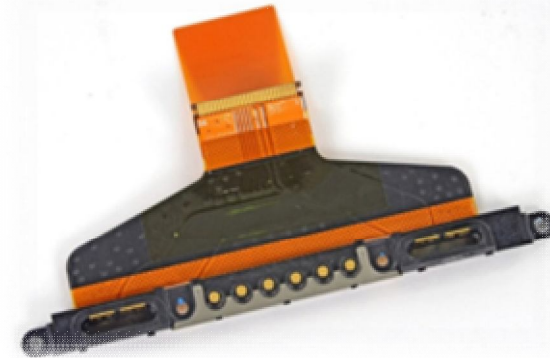


用途 (Usage)

Pad with Keyboard connection



Receptacle connector on pad M/B



Pogo connector on keyboard cable side



Pogo Pin Connector Applications

Keyboard Connector for Transform Notebook

B Board Connector



用途 (Usage)

Pad with Keyboard connection



Pogo Pin Connector Applications

Keyboard Connector for Transform Notebook



Power supply for keyboard



Receptacle connector on keyboard PCB



Pogo connector on pad M/B

用途 (Usage)

Pad with Keyboard connection

好處 (Advantage)

Black & silvery surface treatment

Pogo Pin Connector Applications – Water-proof Pogo Pin Connector for outdoor GPS



D

Docking Connector



用途 (Usage)

座充连接器 (Docking Connector)

好處 (Advantage)

1. 易插拔 (Easy to Use)
2. 大电流 (High-current)

Level IPX7 -PASS



Pogo Pin Connector Applications

Power supply for smart watch



Pogo pin on
charge cable



Charge pad on
smart watch



用途 (Usage)

Power supply for smart watch

好處 (Advantage)

1. Super lower profile
2. Waterproof



Pogo Pin Connector Applications

Power supply for smart wristband



Pogo pin on flex charge cable



Charge pad on device



Charge sketch

穿戴式产品



Pogo Pin Connector Applications

Docking Connector for handy POS



Data transmission and power supply for handy POS

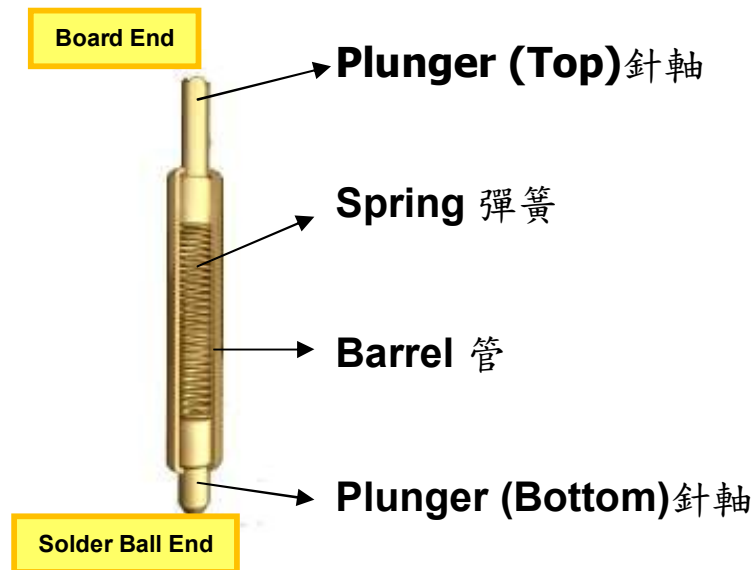


IO for female connector



Pogo pin connector

Introduction of IC Testing Probes



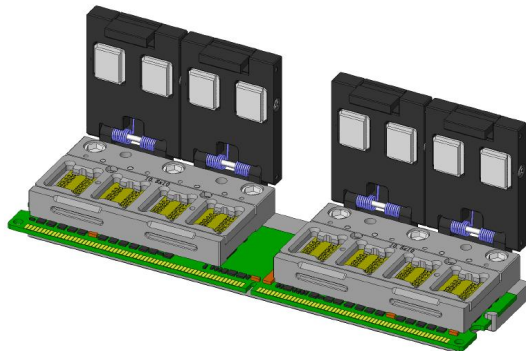
CCP Probe Characteristics :

- 針對不同的封裝方式，提供不同的頭型
Different types of probe tip (B、E、F、D)
- 動態阻值穩定 Consistent Resistance
- 穩定的壽命 20萬次 200K Stable Lifecycles(min)
- 低阻抗 Low contact resistance

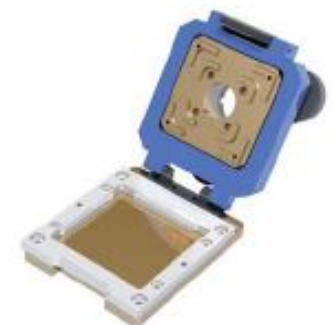
Probe Barrel Diameter Specs:

- 0.58 mm (B, E, F, D)
- 0.51 mm
- 0.38 mm
- 0.30 mm
- 0.25 mm (fine pitch)

IC Test Socket 測試座:



DDR II -667MHz
Memory Test Socket

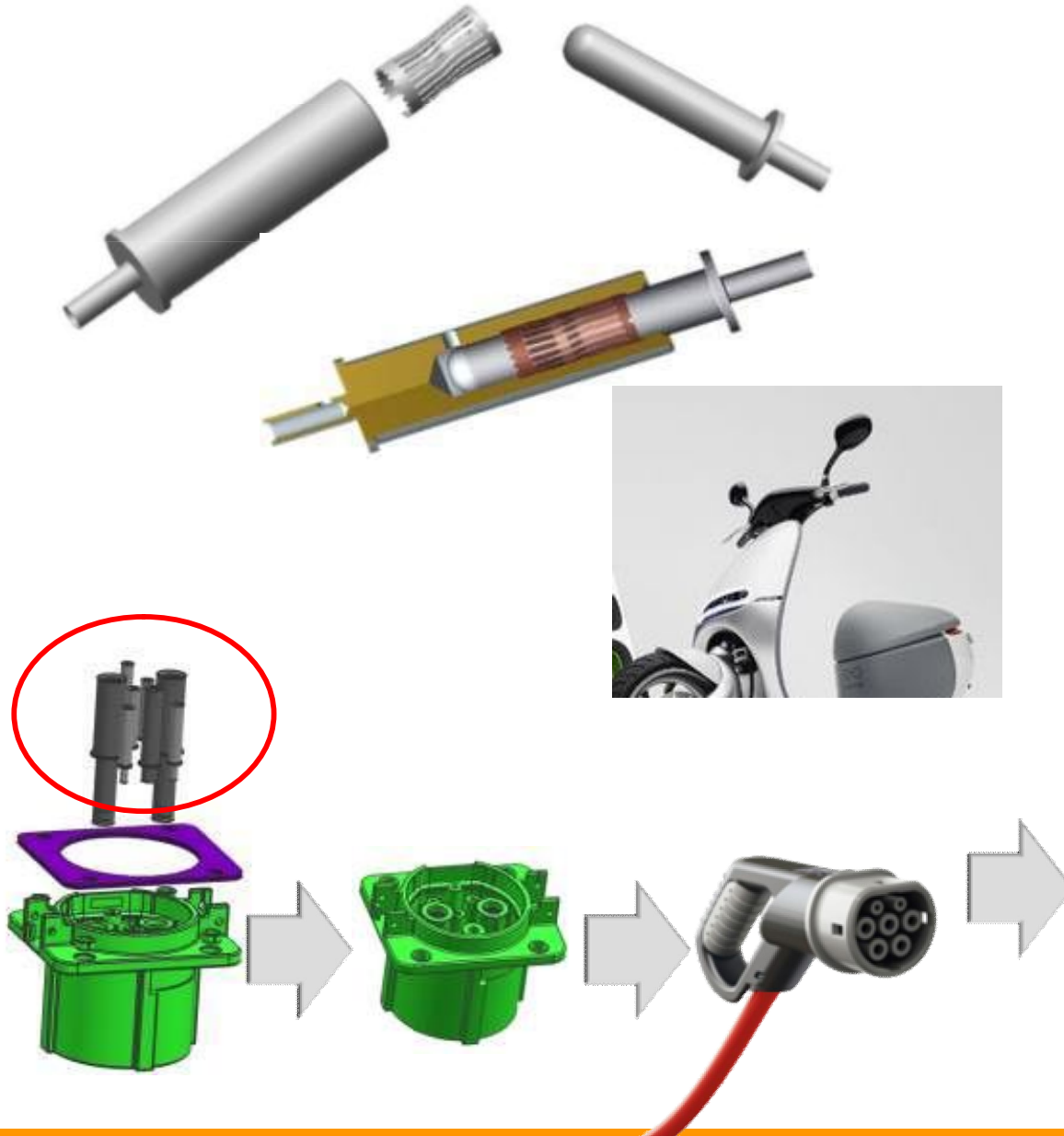


Package Type: BGA , LGA , QFN , CSP(micro BGA)
Package Pitch: 1.27~0.30mm

Connector Applications - Automobile Products – Crown Spring Connector



Applied in EV/HEV charge coupler



Kovar Alloy Product



Thus kovar finds wide usage in the electronics industry for metal parts bonded to hard glass envelopes for such devices as power tubes, x-ray tubes, connector, relay etc., and other applications requiring glass-to-metal seals.

Kovar parts



Power tube



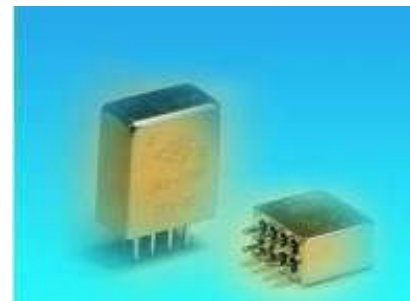
Xray tube



Connector



Relays



Special Connector Solution



- Kovar Alloy (可伐合金) / Tin Bronze(錫青銅) / Phosphor Bronze(磷青銅)



Connector



Relays



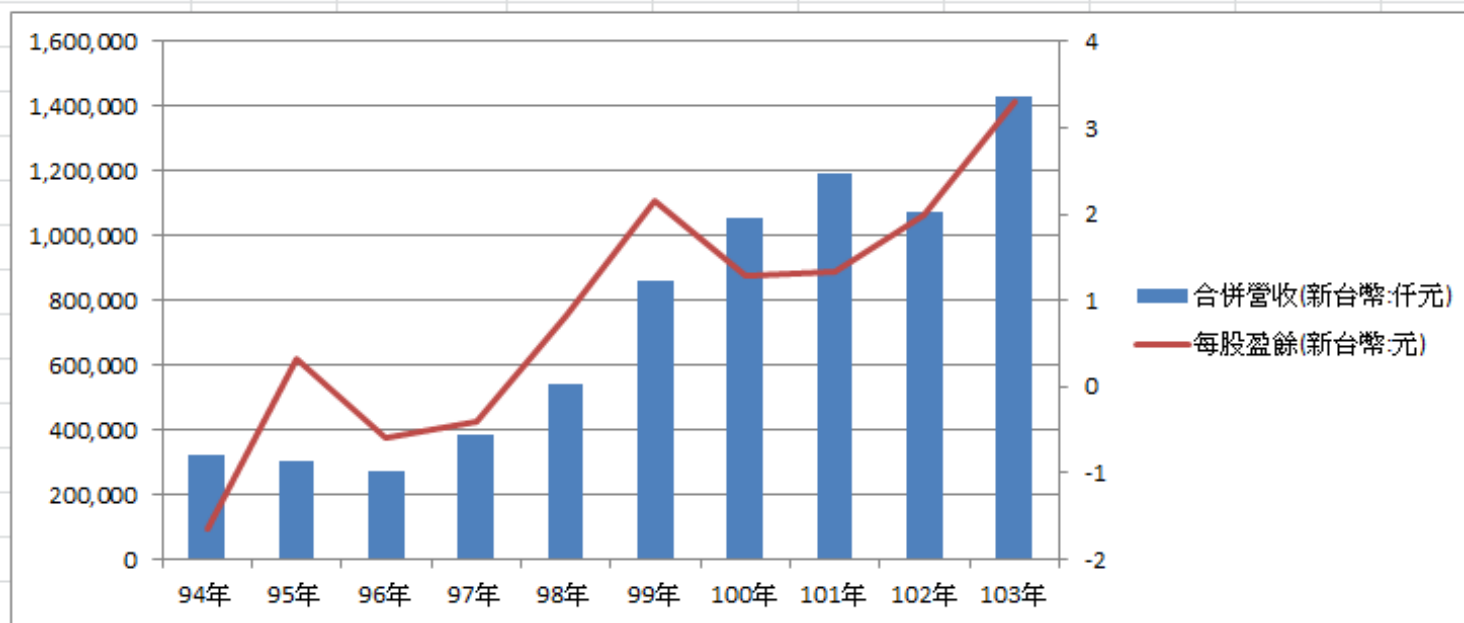
完美防水防氣連接器解決方案 – Kovar + 玻璃燒結

在惡劣環境下、極端溫度環境下，kovar和玻璃之間由於膨脹係數一致，可保持連接器的防水及氣密效果

Precision Machining Solution



最近10年營收及獲利趨勢

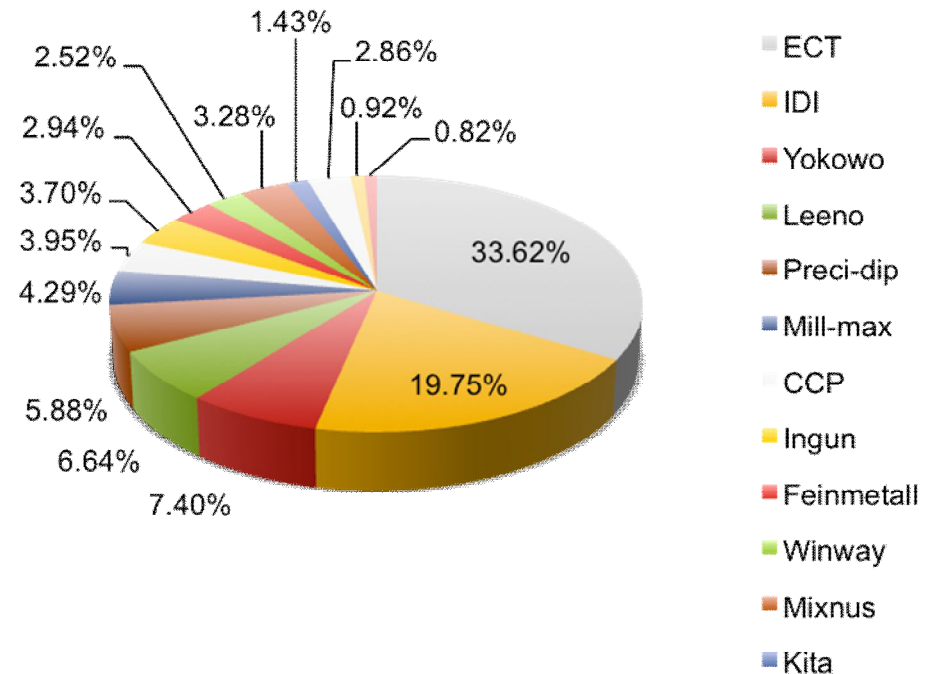


項目\年度	94年	95年	96年	97年	98年	99年	100年	101年	102年	103年
合併營收(新台幣:仟元)	319,284	303,204	274,210	382,827	544,308	862,805	1,057,333	1,194,889	1,071,062	1,427,800
每股盈餘(新台幣:元)	-1.65	0.32	-0.58	-0.4	0.82	2.16	1.29	1.34	1.99	3.3

CCP Market Share



	Company	Revenue (US\$M)	Product Line	%	Location
1	ECT	400	PCB/IC/Socket/Conn	33.62%	USA
2	IDI	235	PCB/IC/Socket/Conn	19.75%	USA
3	Yokowo	88	IC/Socket/Conn	7.40%	Japan
4	Leeno	79	IC/Socket	6.64%	Korea
5	Preci-dip	70	Conn/IC/Socket	5.88%	Swiss
6	Mill-max	51	Conn	4.29%	USA
7	CCP	47	Conn/IC/Probe	3.95%	Taiwan
8	Ingun	44	PCB	3.70%	Germany
9	Feinmetall	35	PCB	2.94%	Germany
10	Winway	30	Socket	2.52%	Taiwan
11	Mixnus	39	IC/Socket	3.28%	Japan
12	Kita	17	IC	1.43%	Japan
13	Rika Denshi	34	IC, Inspection Machine	2.86%	Japan
14	Johnstech	11	Socket	0.92%	USA
15	QA	10	PCB	0.82%	USA
Total		1,190			



Source: 2014 annual revenue data from Hoovers
and each company annual report



The End