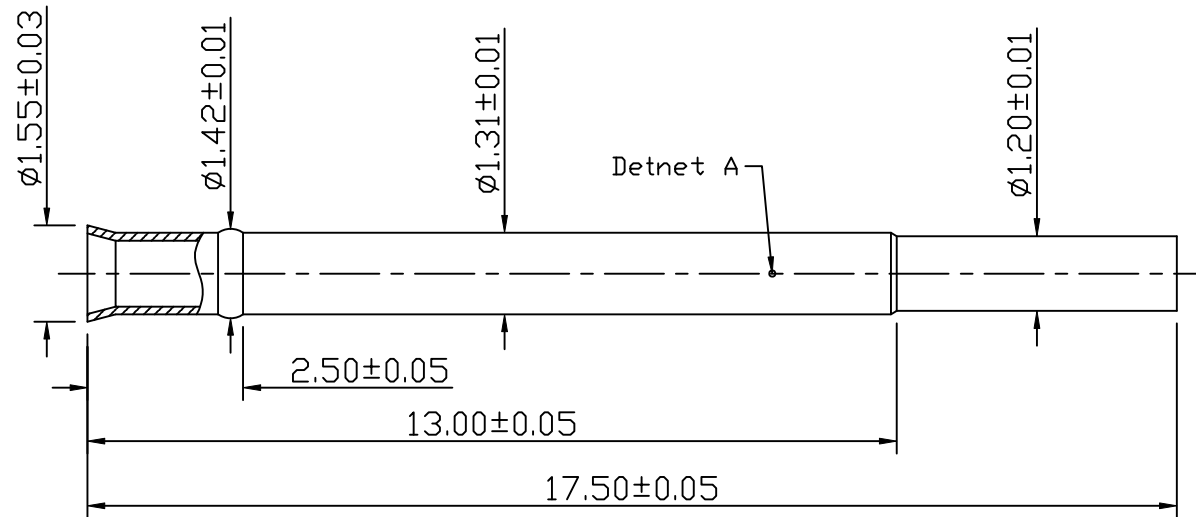


4
PART No. PR-1V-A05Y

2 1

REVISIONS				
LTR	DESCRIPTION	DATE	APPROVED	NOTE
A0	INITIAL RELEASE	10/16/09		ECN-9810008
△				
△				
△				



- NOTES:
- MATERIALS:
RECEPTACLE : Brass
 - PLATING:
RECEPTACLE : Brass Ni/Au
OVER SUBSTRATE PLATED $80 \sim 120 \mu\text{m}$ Nickel
 $2 \mu\text{m}$ Au PLATED.
 - DETENT A, THE INSERT FORCE IS $0.5 \sim 1.2\text{Kg}$.

DRAWN	SCALE: 8 / 1	中國探針股份有限公司 C.C.P. CONTACT PROBES CO.,LTD.		
CHECKED	SHEET: 1 OF 1			
APPROVALS	DATE: 10/16/09	TITLE: P-1 RECEPTACLE		
<small>DIMENSIONS ARE IN MILLIMETERS THE INFORMATION AND DESIGN DISCLOSED HEREIN WAS ORIGINATED BY AND IS THE PROPERTY OF C.C.P. CONTACT PROBES CO.,LTD. C.C.P. CONTACT PROBES CO.,LTD. RESERVES ALL PATENT, PROPRIETARY DESIGN, MANUFACTURING, REPRODUCTION, USE AND SALES RIGHTS THEREOF, AND TO ANY ARTICLE DISCLOSED HEREIN EXCEPT TO THE EXTENT RIGHTS ARE EXPRESSLY GRANTED TO OTHERS. THE FOREGOING DOES NOT APPLY TO VENDOR PROPRIETARY RIGHTS.</small>		SIZE A4	DRAWING NO. PR-1V-A05Y	REV. A0
FILE PATH:				