

# New Energy Connector

High Current Connector  
EV Charging Connector



C.C.P. CONTACT PROBES CO.

# Table of Content

01-02 About Us: CCP

03 Crown Spring and Terminals

04 Terminal Dimension

05 Wiring and Connector Type

06 GB EV Charging Plug & Socket

07 GB EV Charging Specs

08 Testing Items

09 Quality Management

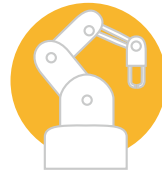
# About Us: CCP

## Advantages



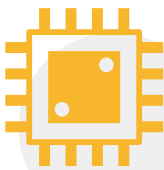
30 Years of Experience of Product Design  
with First-Tier Clients

Speedy and Flexible Design Process  
with Self-owned Turning and Plating Factory

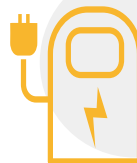


Stable Products with  
Certified Quality Management System  
and High-end Equipments

## Product Lines



Testing Solutions



High Current Connector Solutions



Commercial Connector Solutions



Industrial Connector Solutions

# About Us: CCP

## History

**2018** CCP Germany/India Established

**2016** New Energy Connector Product Line

**2014** CCP USA Established

**2003** Listed in Taiwan Stock Market (TW. 6217)

**2002** Commercial Connector Product Line

**2001** CCP Dongguan Established

**1983** CCP Established/ Testing Product Line

## Company Culture



Yearly Home Visit



Employee's Children Summer Camp



Tuition Subsidy for Employee's Children

# Crown Spring and Terminals

## Female Terminal

Copper Alloy with  
Silver Plating

## Crown Spring

Copper Alloy with  
Silver Plating

up to 20000 Times Life Cycle

## Male Terminal

Copper Alloy with  
Silver Plating



# Terminal Dimension

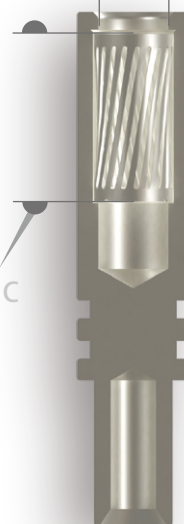
Male Terminal



Dim A

Dim B

Dim C



Female Terminal  
& Crown Spring

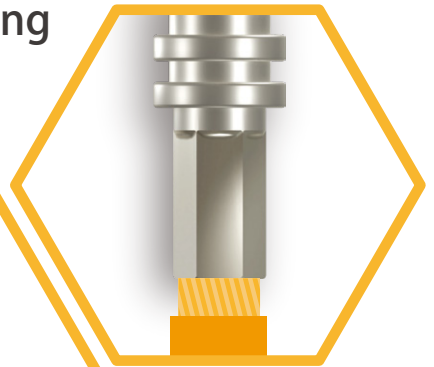
Dim A (mm)	Dim B (mm)	Dim C (mm)	Current (Amp)
1.5	1.65	5.6/7.6	5~12
2.8	3.95	5.6/7.6	32~80
3.0	3.58	5.6	2.3
3.6	3.75	6.6/7.6	16~120
3.8	4.10	7.5	25
4.0	8.00	5.6	32
6.0	6.20/6.50	13.1/15.0	32~150
6.4	7.54	10.0	115
7.2	7.40	10.0	150
8.0	8.10/8.20	10.0/20.0	100~230
10.0	10.20	13.1/24.2	200~300
12.0	12.20	24.2	250~400
14.0	14.20	32.0	500
16.0	16.20	12.0/38.0	400~700
18.0	18.20	12.0	600
19.0	19.00	9.6	100

Besides dimensions on the list, CCP can customize for sepecial request.

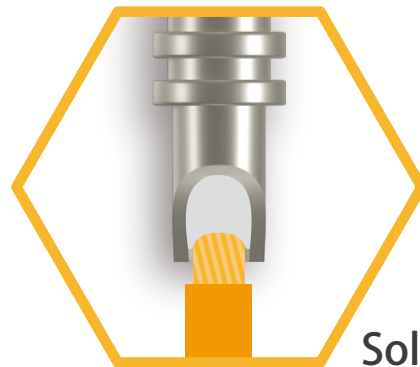
# Wiring and Connector Type

## Wiring Method

Hex Crimping



Dotted Crimping

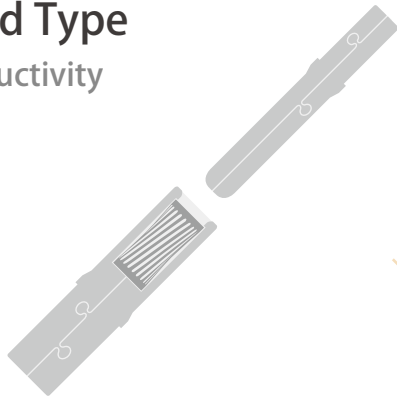


Soldering Cup

## Connector Type

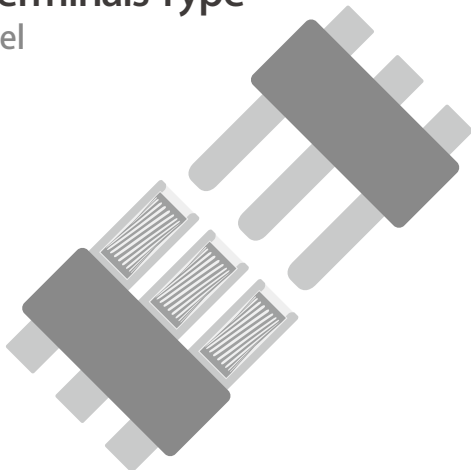
Stamped Type

High Productivity  
Low Cost



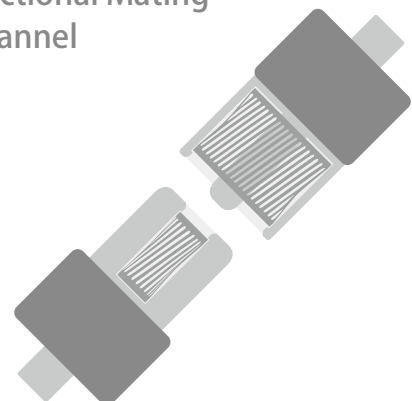
Multiple Terminals Type

Multi-Channel



Coaxial Type

Non-directional Mating  
Multi-Channel

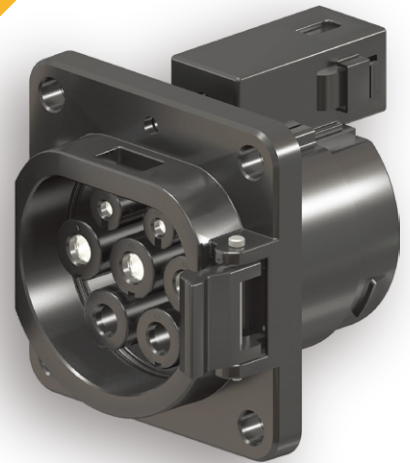


# GB EV Charging Plug & Socket

AC Plug



AC Socket



AC Type



China  
Standard



Besides plug and socket for China GB Standard, CCP can provide terminal and crown spring for **Europe IEC** & **USA SAE** standard.



DC Socket



DC Type

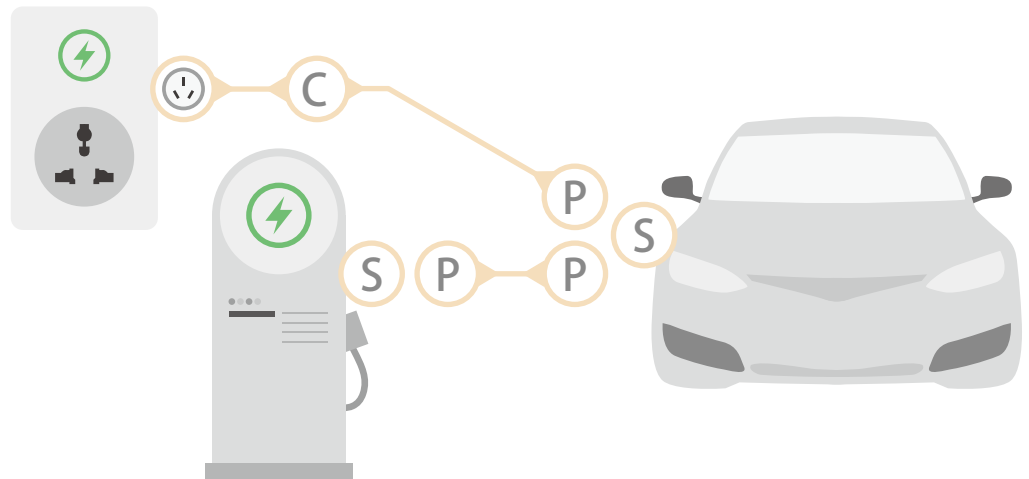


AC Control Box



# GB EV Charging Specs

- P Plug
- S Socket
- C Control Box
- Home Plug



	AC Plug	AC Socket	DC Socket
Rated Voltage (V)	250	250	750/1000
Rated Current (Amp)	16/32	16/32	80/125/200/250
Insulation Resistance (MΩ @1000V DC)	1000	1000	1000
Withsatnd Voltage (V AC)	2500	2500	2500
Mechanical Life (times)	>10'000	>10'000	>10'000
Insertion Force (N)	<100	<100	<140
Terminal Temp. Rise (ΔT @25°C)	<50°C	<50°C	<50°C
Operating Temp. (°C)	-40~80	-40~80	-40~80
Ingress Protection	IP55	IP55	IP55
Flame Rating	UL94 V-0	UL94 V-0	UL94 V-0
Standard	GB/T 20234.2-2015	GB/T 20234.2-2015	GB/T 20234.2-2015

# Verification Ability

## Testing Items

### Environmental

#### Waterproof

Humidity Test

Salt Spray

#### Thermal Impact

Resist. to Solder Heat

#### Vibration

### Electrical

Contact Resistance

Insulation

HIPOT

Rated Current

### Mechanical

Retention Force

Life Cycle

Vibration

Mechanical Shock

### Other

Drop

Soldering Side Force

Solderability

## Testing Equipment

Rated Current  
Max Rating: 1000Amp



Waterproof  
Test Level : IPX7 Up



Thermal Impact  
Range: -60~120°C  
Resolution: 0.01°C



Vibration 震動  
Frequency: 3500Hz max.  
Acceleration: 50G max.



# Quality Management

## Quality System

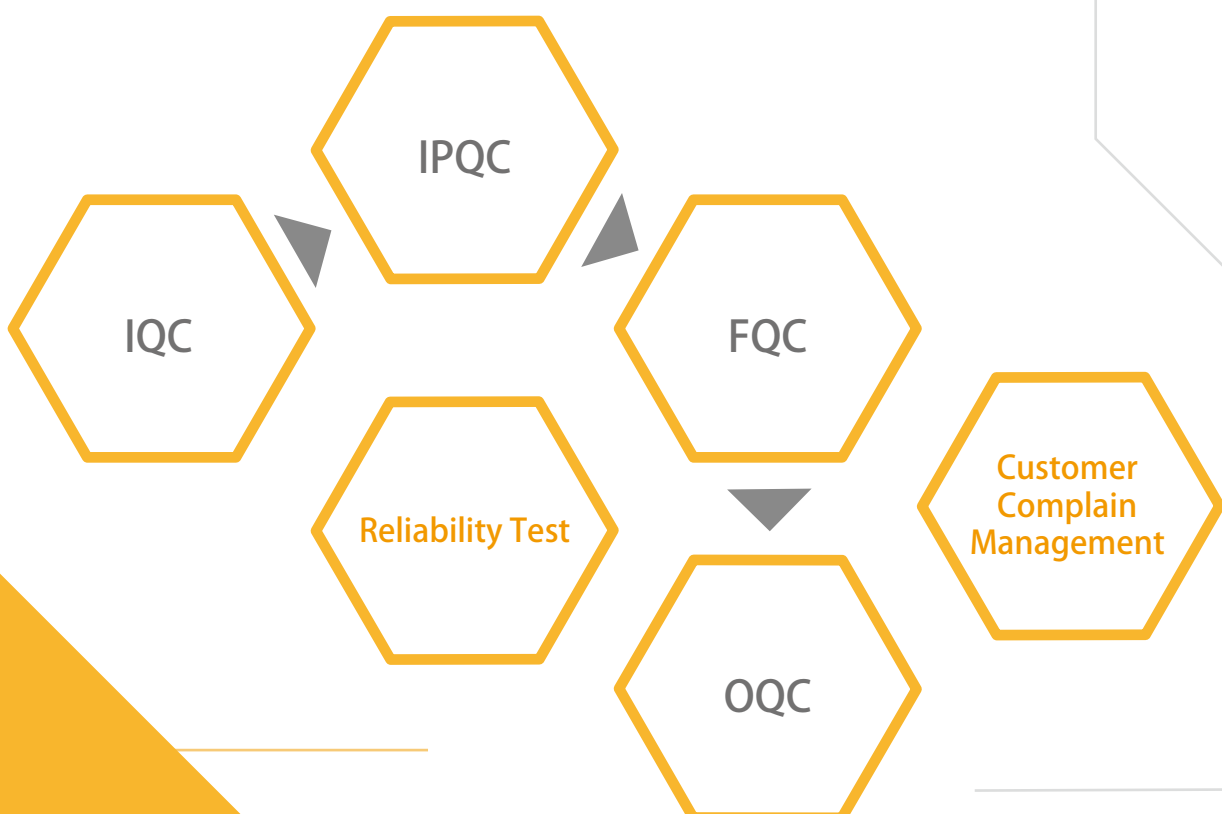
**ISO 9001: 2015**  
Quality Management Systems

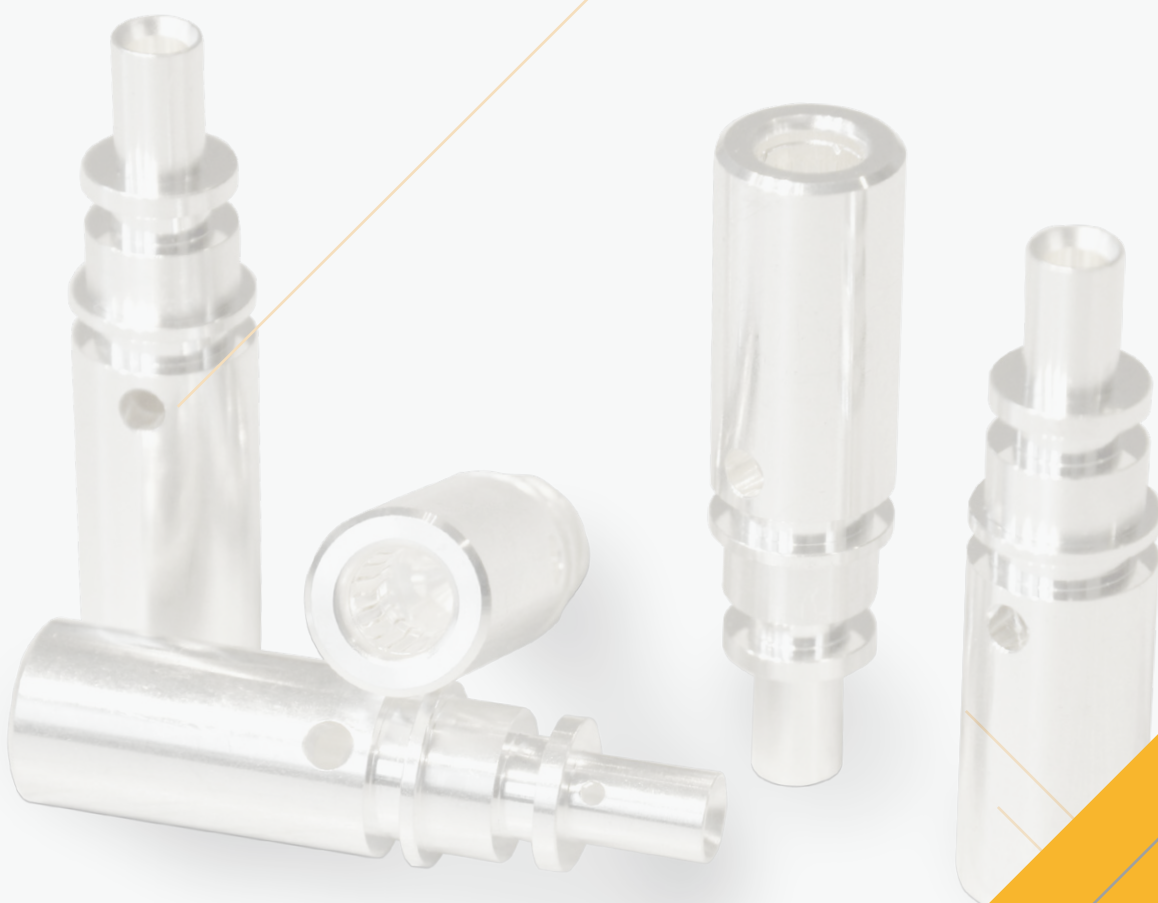
**ISO 14001: 2015**  
Environmental Management System

**IATF 16949: 2016**  
Automotive Quality Management System

**QC 080000**  
Hazardous Substance Process Management

## Quality Assurance





**Dongguan**  
+86-769-85151668

**Beijing**  
+86-10-53856584

**Chengdu**  
+86-28-87440813

**San Jose**  
+1-408-3341981

**Chongqing**  
+86-158-23468769

**Frankfurt**  
+49-171-3669549

**Shenzhen**  
+86-755-82794229

**Bangalore**  
+91-7619689680

**Kunshan**  
+86-512-57378981

**Taipei HQ**  
+886-2-29612525

**Singapore**  
+65-81391296

**Wuhan**  
+86-139-73919421

**Kaohsiung**  
+886-7-3601161

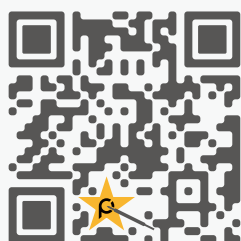
**Seoul**  
+070-7543-2531

**Hong Kong**  
+852-23014671

**Zhubei**  
+886-3-5506368

**Tokyo**  
+81-5295-7090

**Hanoi**  
+843-8805-1121



[www.ccpcontactprobes.com](http://www.ccpcontactprobes.com)  
[ccp\\_service@pccp.com.tw](mailto:ccp_service@pccp.com.tw)