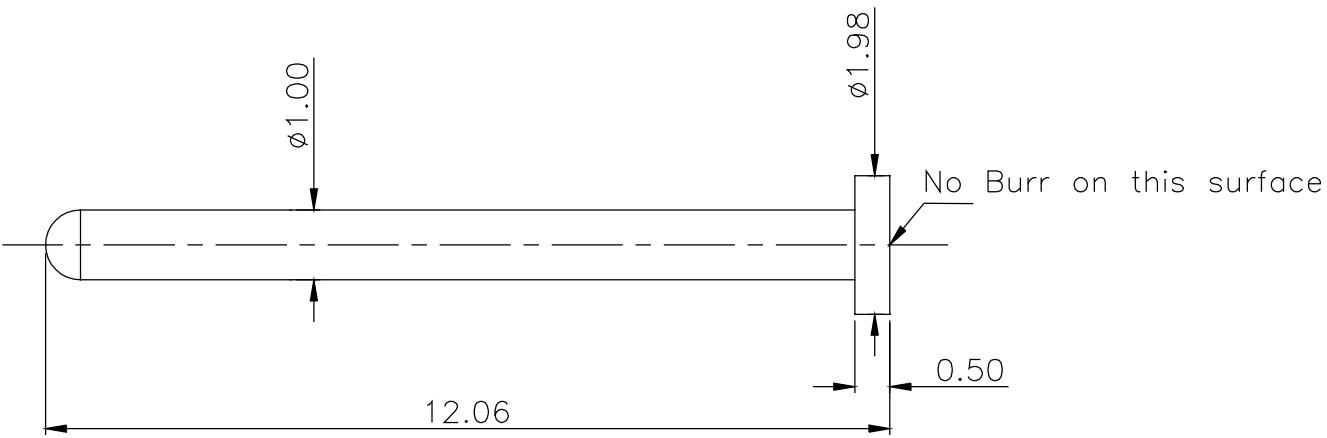


REVISIONS(修正)			
NO.(序号)	DESCRIPTION(描述)	ECN NO.(变更号)	DATE(日期)
A.0	INITIAL RELEASE	ECN-2201512021	2015.12.10

Please Approve this Drawing

Date	
Signature	



NOTE:
 1. Material: Brass
 2. Plating :10 microinch Min. Au over 50~100 microinch Min. nickel.
 3. Swage Pins are Annealed.
 4. Harmful material control please follow DOC. NO."DQ03050".

DRAWN (设计)	Liu Mo	SCALE (比例)	10 : 1	UNIT (单位)	mm	DRAWING NO. (图号)	HCS0827SM01-B
CHECKED (确认)		SHEET (页数)	1 of 1	PROJECT (视图)		TITLE (品名)	PIN
APPROVED (核准)		DATE (日期)	2015.12.10	VER. (版本)	A.0		
THE UNMARKED TOLERANCE ARE AS BELOW : (未标记的公差)							
LENGTH (尺寸)		ANGLE (角度)		C.C.P. (DG) CONTACT PROBES CO.,LTD. 东莞中探探针有限公司			
0~6.0	±0.05mm	0.	±2.0'	The information in this document is property of C.C.P company and should not be copied or reproduced in any other way, without written permission.			
>6~30	±0.10mm	0.0	±1.0'				
>30~120	±0.15mm	0.00	±0.50'				