

4

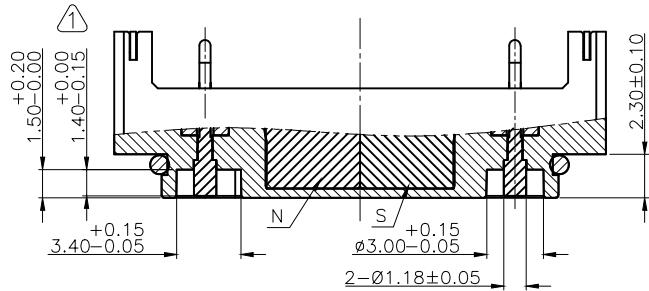
3

2

1

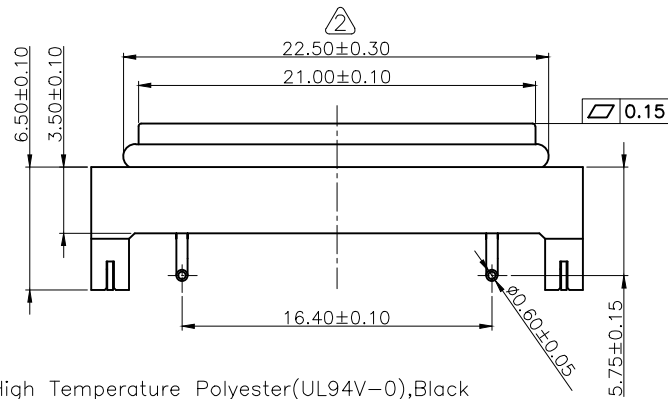
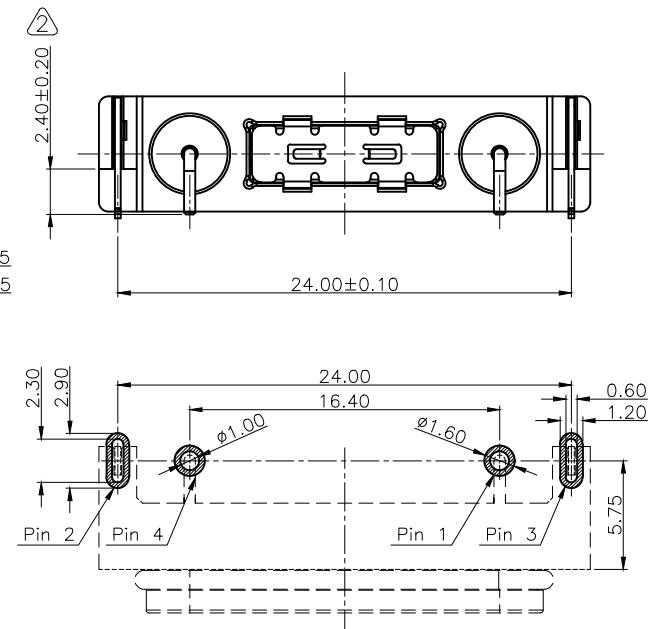
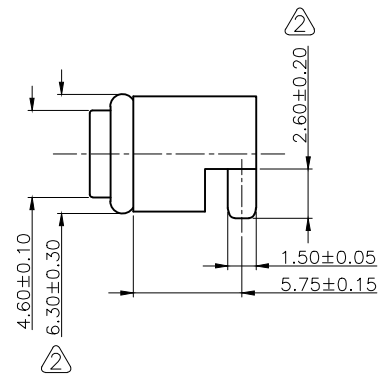
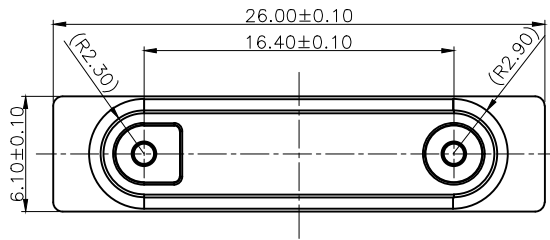
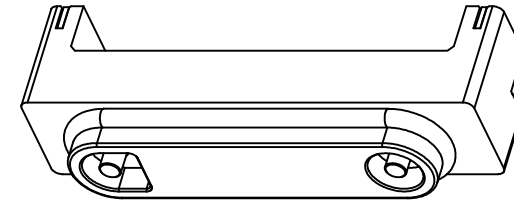
## REVISIONS(修正)

NO. (序号)	DESCRIPTION(描述)	DCN NO.(变更号)	DATE(日期)
D.0	INITIAL RELEASE	DCN-201411041	2014.11.18
D.1	Modify 1.40±0.10 to 1.40 <sup>+0.00</sup> <sub>-0.15</sub>	DCN-201412115	2014.12.22
D.2	Modify 2.10±0.20 to 2.60±0.20	DCN-201505009	2015.05.05



Please Approve this Drawing

Date	
Signature	



(TOP VIEW)

RECOMMEND PCB LAYOUT  
Layout Tolerance:±0.05

## NOTES:

- Materials:
  - .Housing: High Temperature Polyester(UL94V-0),Black
  - .Pin: Brass
  - .Ruber: Silicon Rubber 60°,Black,T=1.30mm.
  - .Shell&Latch: SUS
- Plating:
  - .Pin :50 micro-inch minimum Au over 40~80 micro-inch CuSnZn.  $\triangle$
- Electrical
  - .Rated Current & Voltage : DC 24V ; 5.0A Max
  - .Contact resistance:50 mohm maximum
- Mechanical
  - .Durability:20,000 cycles(minimum)
- .Harmful material control please follow DOC. NO."DQ03050"
- .Waterproof grade-IPX7

DRAWN (设计)	潘红	SCALE (比例)	2 : 1	UNIT (单位)	mm	DRAWING NO. (图号)	P2859FL01-02A164HT
CHECKED (确认)		SHEET (页数)	1 of 1	PROJECT (视图)		TITLE (品名)	2Pin Matnetic Connector For Female
APPROVED (核准)		DATE (日期)	2015.05.05	VER. (版本)	D.2		

THE UNMARKED TOLERANCE ARE AS BELOW :  
(未标记的公差)  
LENGTH (尺寸)

0~6.0	±0.05mm	0.	±2.0°
>6~30	±0.10mm	0.0	±1.0°
>30~120	±0.15mm	0.00	±0.50°

ANGLE (角度)

C.C.P. (DG) CONTACT PROBES CO.,LTD.  
东莞中探探针有限公司

The information in this document is property of C.C.P company and should not be copied or reproduced in any other way, without written permission.