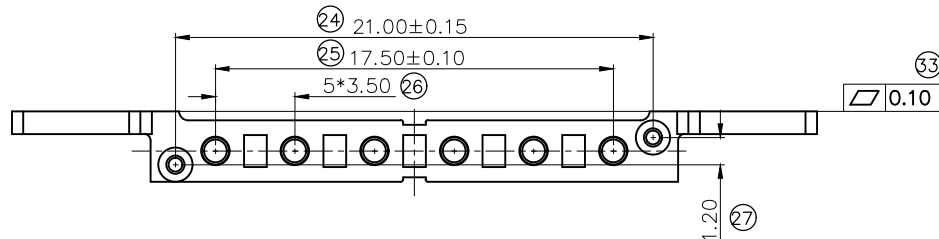
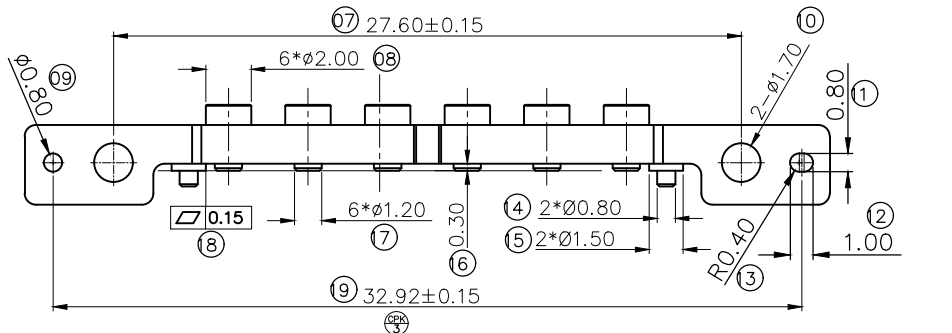
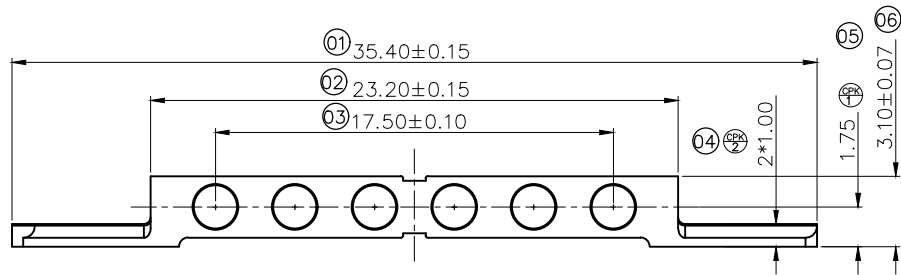
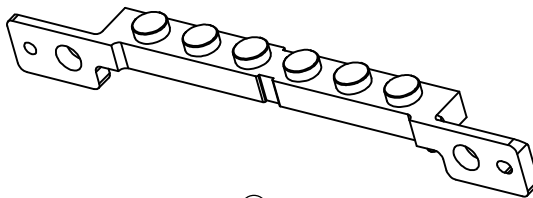


Please Approve this Drawing

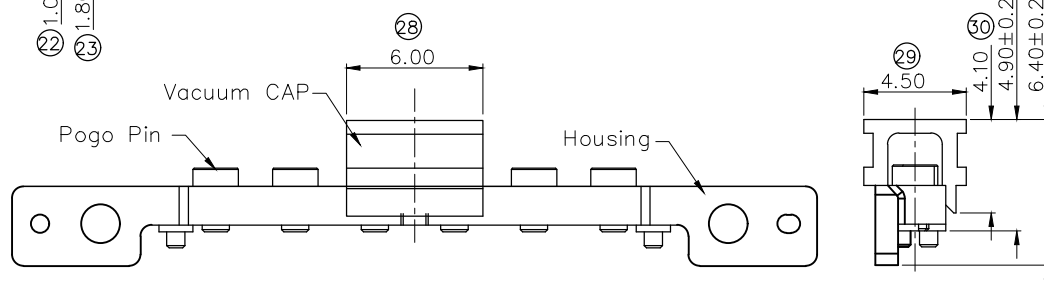
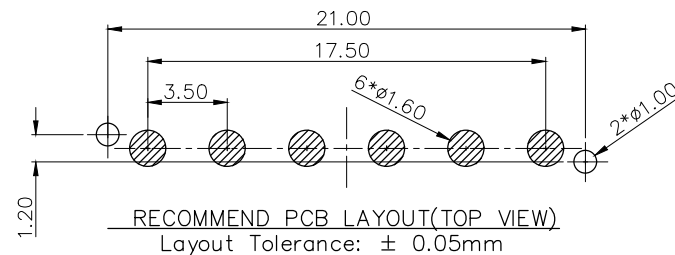
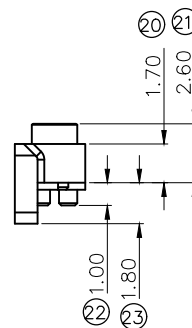
Date
Signature



REVISIONS (修正)			
NO. (序号)	DESCRIPTION(描述)	ECN NO.(变更号)	DATE(日期)
A.0	NEW RELEASE	ECN-2201612003	2016.12.07

NOTES:

- Materials:
 .Housing: HTN.UL94V-0 ,Black
 .Cap: HTN.UL94V-0 ,Black
 .Pin: Brass C3604
- Plating:
 10 micro-inch minimum Au over 50~100 micro-inch nickel.
- Mark CP is Complex Process Capability index
- .Harmful material control please follow DOC.NO. "DQ03050"



DRAW (设计)	Benson_Zhou	SCALE (比例)	10 : 1	UNIT (单位)	mm	DRAWING NO. (图号)	P3768FL01-06A350MR
CHECK (校对)		SHEET (页数)	1 of 1	PROJECT (视图)		MATERIAL (材质)	Seeing notes (见备注)
AUDIT (审核)		DATE (日期)	2016.12.07	REV.	A.0	TITLE (品名)	6Pin Female Conn.
APPROVE (核准)		PLATE (镀层)	Seeing notes(见备注)				

THE UNMARKED TOLERANCE ARE AS BELOW :
(未标记的公差)

LENGTH (尺寸)		ANGLE (角度)	
0~6.0	±0.05mm	0.	±2.0°
>6~30	±0.10mm	0.0	±1.0°
>30~120	±0.15mm	0.00	±0.50°

C.C.P. (DG) CONTACT PROBES CO.,LTD.
东莞中探探针有限公司

The information in this document is property of C.C.P company and should not be copied or reproduced in any other way, without written permission.