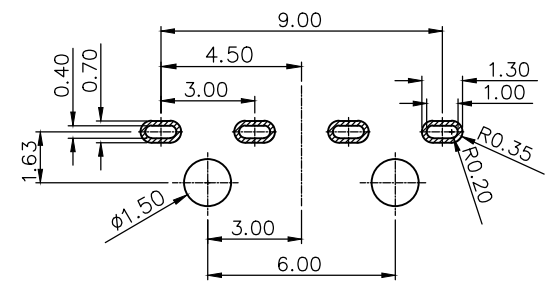
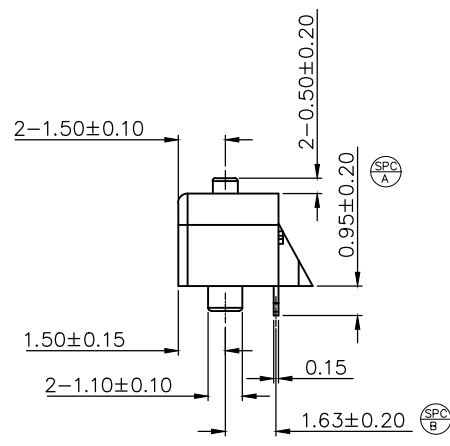
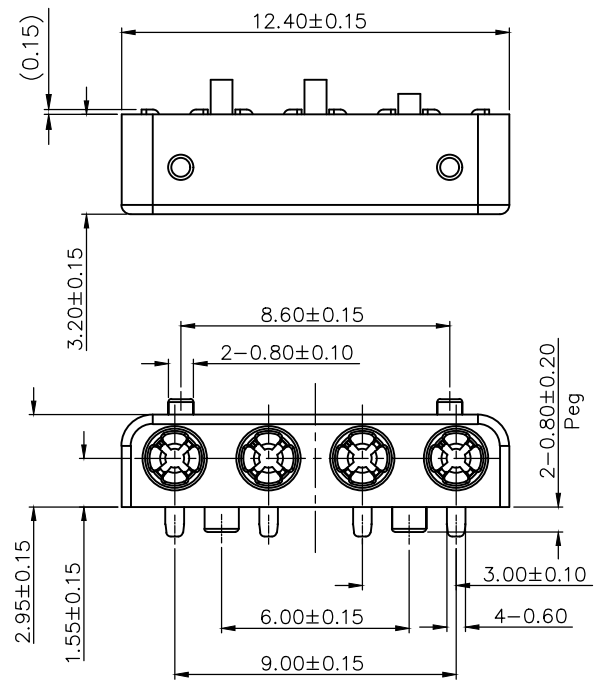


Please Approve this Drawing

|           |  |
|-----------|--|
| Date      |  |
| Signature |  |

| REVISIONS (修正) |                 |                |            |
|----------------|-----------------|----------------|------------|
| NO. (序号)       | DESCRIPTION(描述) | ECN NO.(变更号)   | DATE(日期)   |
| A.0            | NEW RELEASE     | ECN-2201611030 | 2016.11.30 |

- NOTES:
- Materials:
    - .Housing: HTN UL94V-0 Black
    - .terminal: beryllium copper
  - Plating:
    - .terminal: 30 micro-inch minimum Au in contact area over 50~100 micro-inch nickel.
  - Electrical:
    - .Rated current & voltage: DC5V, 1.2A.
    - .Contact resistance: 25 mohm (initial),50 mohm(after use)
  - Mark (SPC) is critical dimension for process control.
  - Other dimension for FAI (first article inspection) purpose only.
  - Based on the engineering drawings,shall not exceed the maximum allowed compression
  - Harmful material control please follow DOC. NO. "DQ03050"



|              |       |                   |        |                   |            |                      |                    |  |  |
|--------------|-------|-------------------|--------|-------------------|------------|----------------------|--------------------|--|--|
| DRAW (设计)    | Hendy | SCALE (比例)        | 5 : 1  | UNIT (单位)         | mm         | CCP Part NO. (CCP料号) | P5275FS05-04A300HR |  |  |
| CHECK (校对)   |       | SHEET (页数)        | 1 of 1 | PROJECT (视图)      |            | MATERIAL (材质)        | Seeing notes (见备注) |  |  |
| AUDIT (审核)   |       | COUNTER SIGN (会签) |        | DATE (日期)         | 2016.11.30 | REV                  | A.0                |  |  |
| APPROVE (核准) |       | PLATE (镀层)        |        | Seeing notes(见备注) |            | TITLE (品名)           | XU1 Female Conn.   |  |  |

THE UNMARKED TOLERANCE ARE AS BELOW :  
(未标记的公差)  
LENGTH (尺寸)

|         |         |      |        |
|---------|---------|------|--------|
| 0~6.0   | ±0.05mm | 0.   | ±2.0°  |
| >6~30   | ±0.10mm | 0.0  | ±1.0°  |
| >30~120 | ±0.15mm | 0.00 | ±0.50° |

ANGLE (角度)

C.C.P. (DG) CONTACT PROBES CO.,LTD.  
东莞中探探针有限公司

The information in this document is property of C.C.P company and should not be copied or reproduced in any other way, without written permission.