

C.C.P.

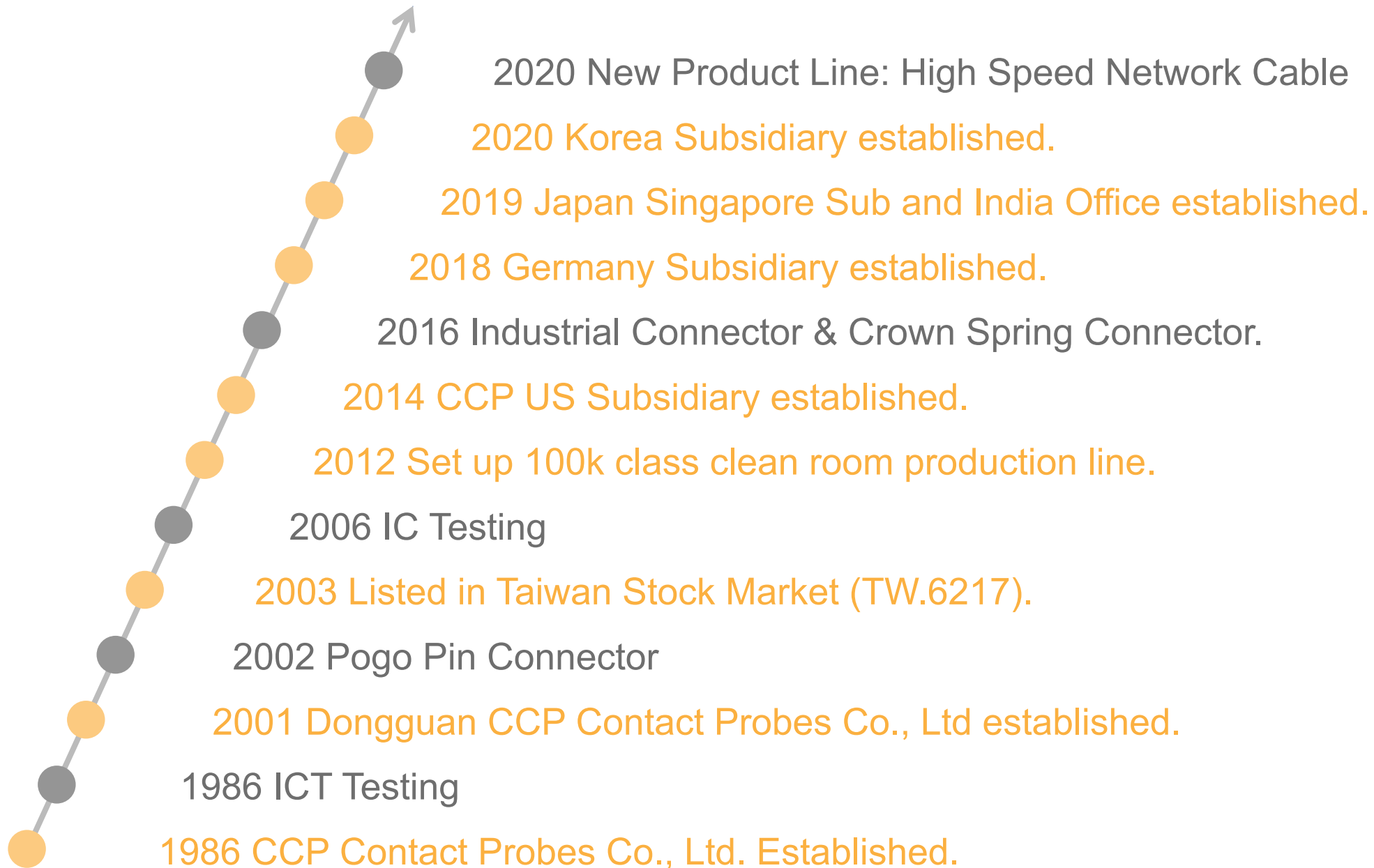


CCP Contact Probes

Medical Connector



CCP Contact Probes - History





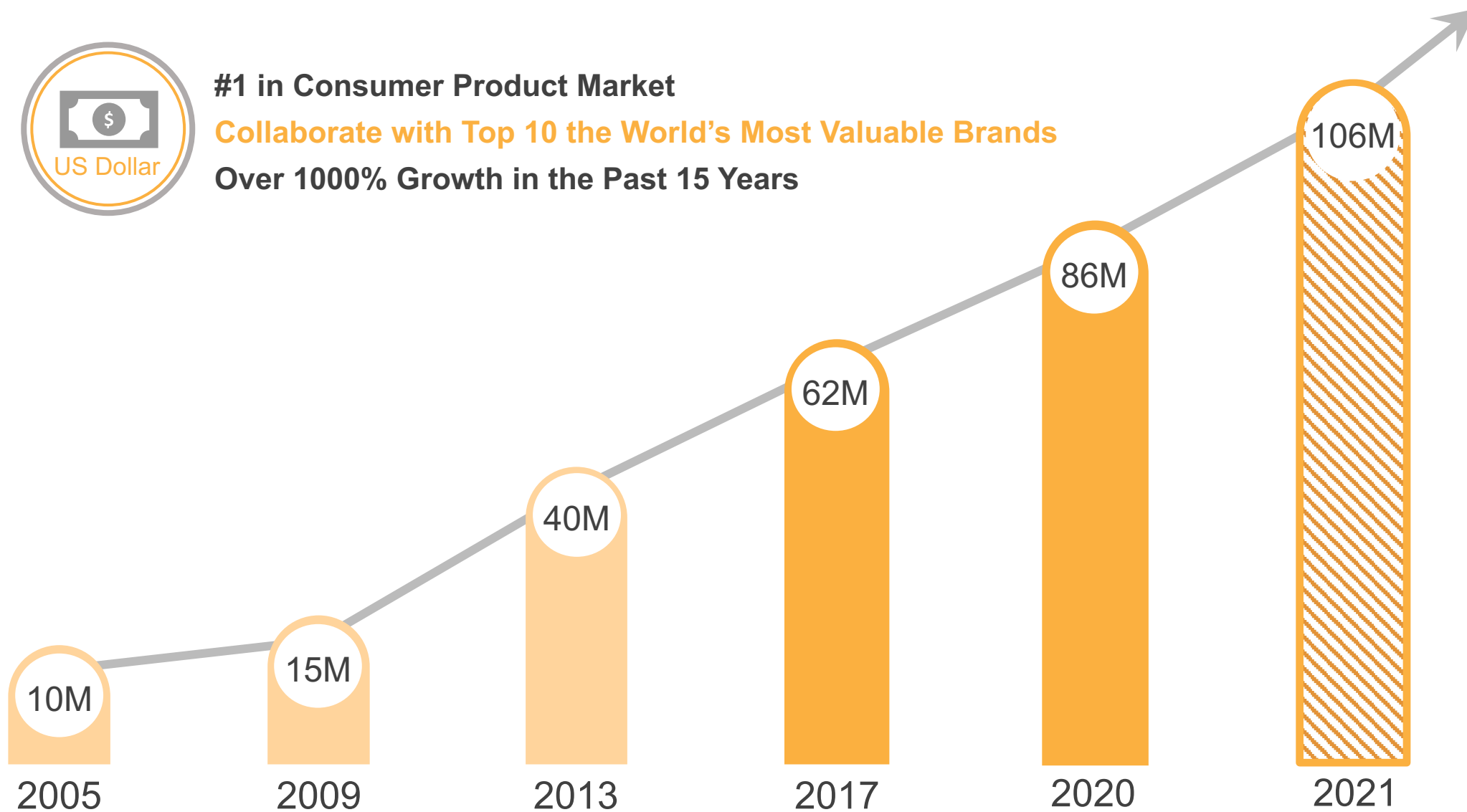
CCP Contact Probes - Growth



#1 in Consumer Product Market

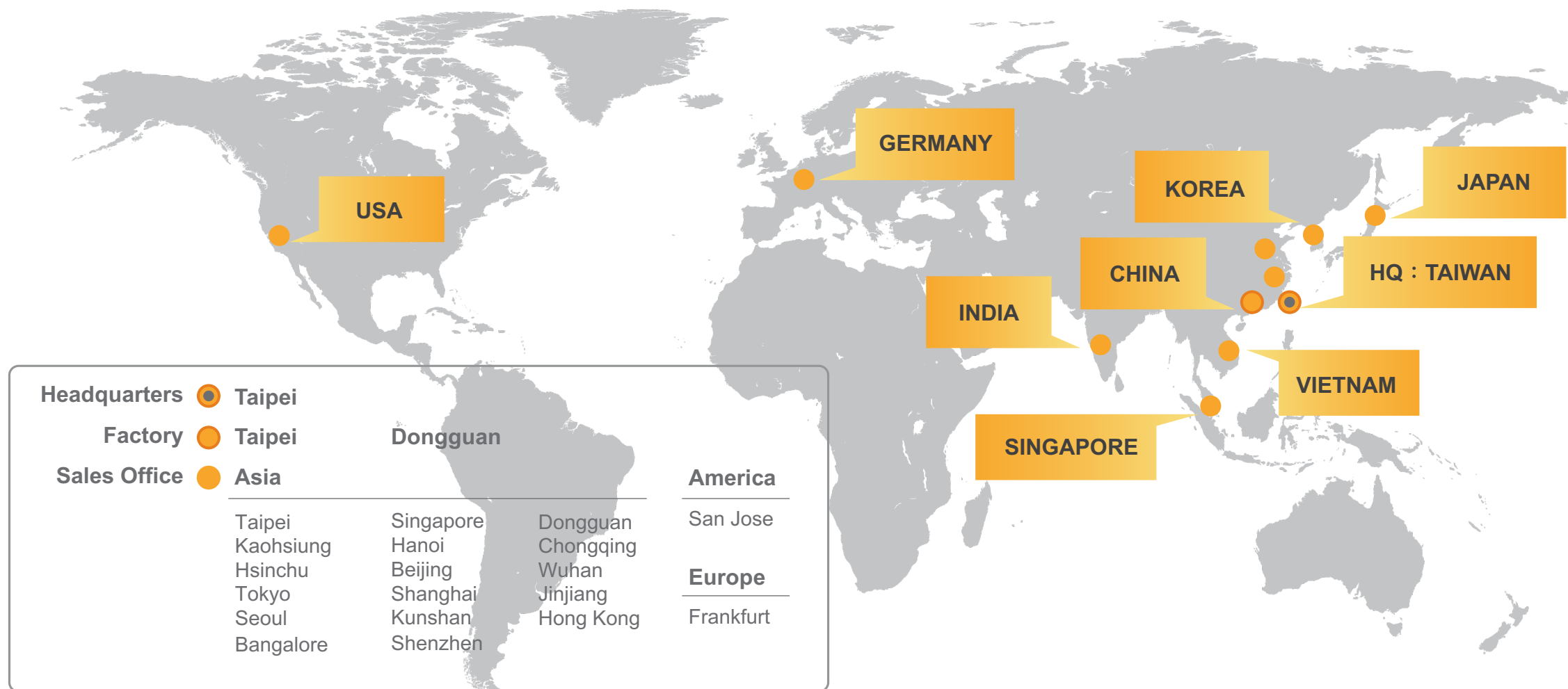
Collaborate with Top 10 the World's Most Valuable Brands

Over 1000% Growth in the Past 15 Years





CCP Contact Probes - Worldwide



Western
Digita



SKYWORKS



KINGSTON

Google



ADVANTEST

flex

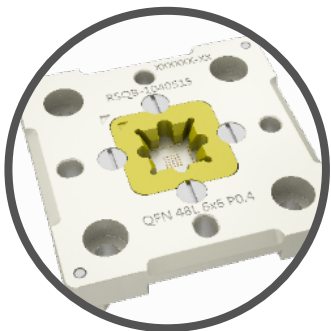


MICROCHIP

FOXCONN



CCP Contact Probes - Product Portfolio



Testing Solution

Fine Pitch

IC Testing Probe
PCB Testing Probe
Testing Socket



Pogo Pin Connector

1A~13A

Pogo Pin Conn.
Waterproof Conn.
Magnetic Conn.



High Current Connector

13A~250A

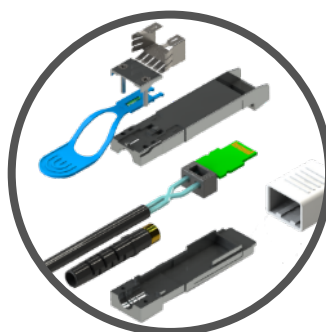
Electronic Vehicle
High Current Conn.



Medical Connector

Environmental Sensitivity

Circular Conn.
Endoscope Conn.



High Speed Cable

25Gbps~100Gbps

Server
Switch
Telecom



Industrial Solution

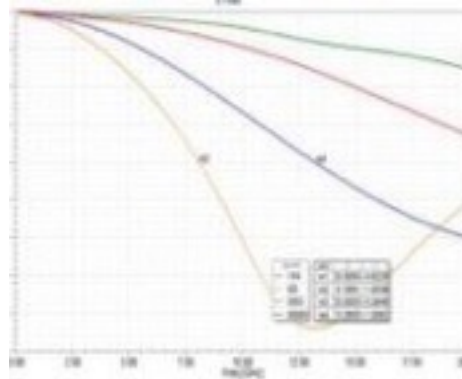
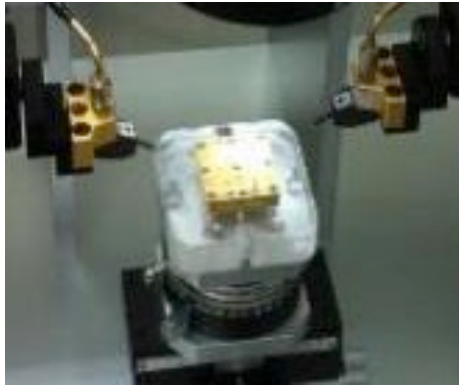
Extreme Environment

Aerospace
Military
Transportation



Core Advantages

High Frequency Simulation



HFSS

Material Development

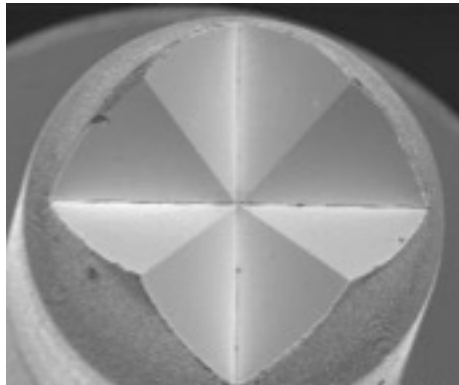


Plating Lab

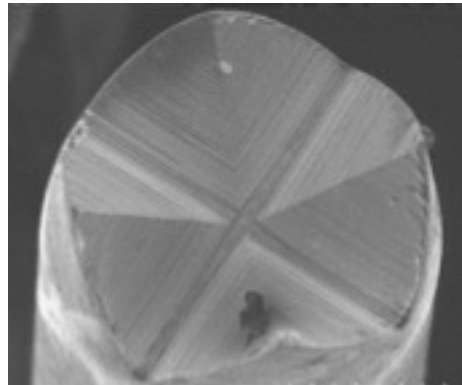


Self-owned Plating Factory

Mirror Process

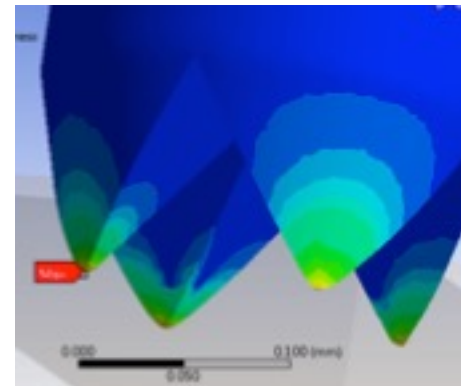


CCP's Product



Other Provider

Finite Element Analysis



ANSYS



Medical Connector Product Line



Critical Care System



Brainwave Headband



Catheter



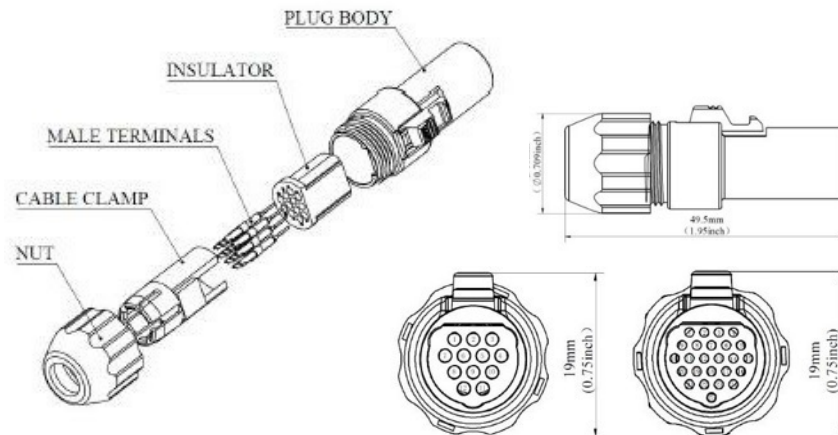
Endoscope



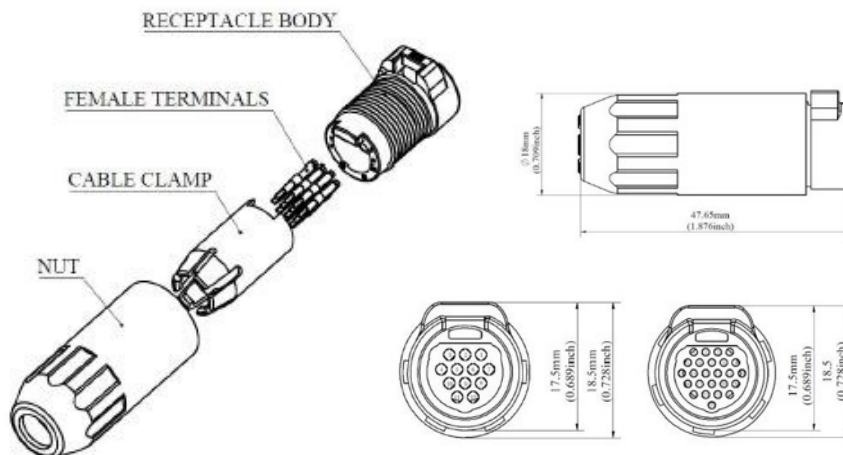


Medical Connector Product Line

Plug



Receptacle



Extremely Low Force
Error Proof Safe Lock
10,000 Life Cycles





Medical Connector - High Frequency Waterproof

- Application: Medical / Military
- High Speed Transmission
- Customized Size: M8, M10, M12, M16, M18 (Type-C: min. M14)
- Customized Plating Color

Waterproof Level: IP57





Testing Solution - Integrated Manufacturing



Automatic CNC lath



CNC spring coiling machine



Surface treatment production line



Semi-automatic assembly machine



Automatic assembly machine



Automatic probe **full inspection**





Testing Capability - Test Equipment

Electrical Performance



Network Analyzer



VNA
(Vector Network Analyzer)



High Current
Power Supply &
Electronic Load



Contact
Resistance
Tester



RCA Tape
Abrasion
Tester

Mechanical Performance



Safety
Comprehensive
Analyzer



Mechanical
Vibration/Shock



Automatic
Insertion Force
Tester



Durability
Cycling
Machine

Environmental Testing



Oven



Thermal shock
test machine



Waterproof test
machine



Salt spray test
machine



Flush test
chamber

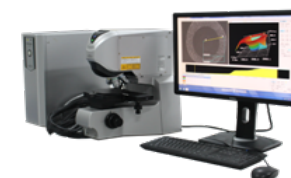


Temperature &
humidity test
machine

Other



Hot-Air Reflow
machine



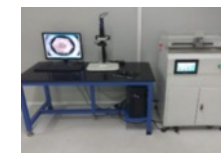
3D laser
scanning
microscope



X-ray



Electrochemical
workstation



Terminal cross
section
analyzer

Quality System

ISO 9001:2015

Quality Management Systems

IATF 16949:2016

Automotive Quality Management System

ISO 14001 : 2015

Environment Management Systems

QC 080000

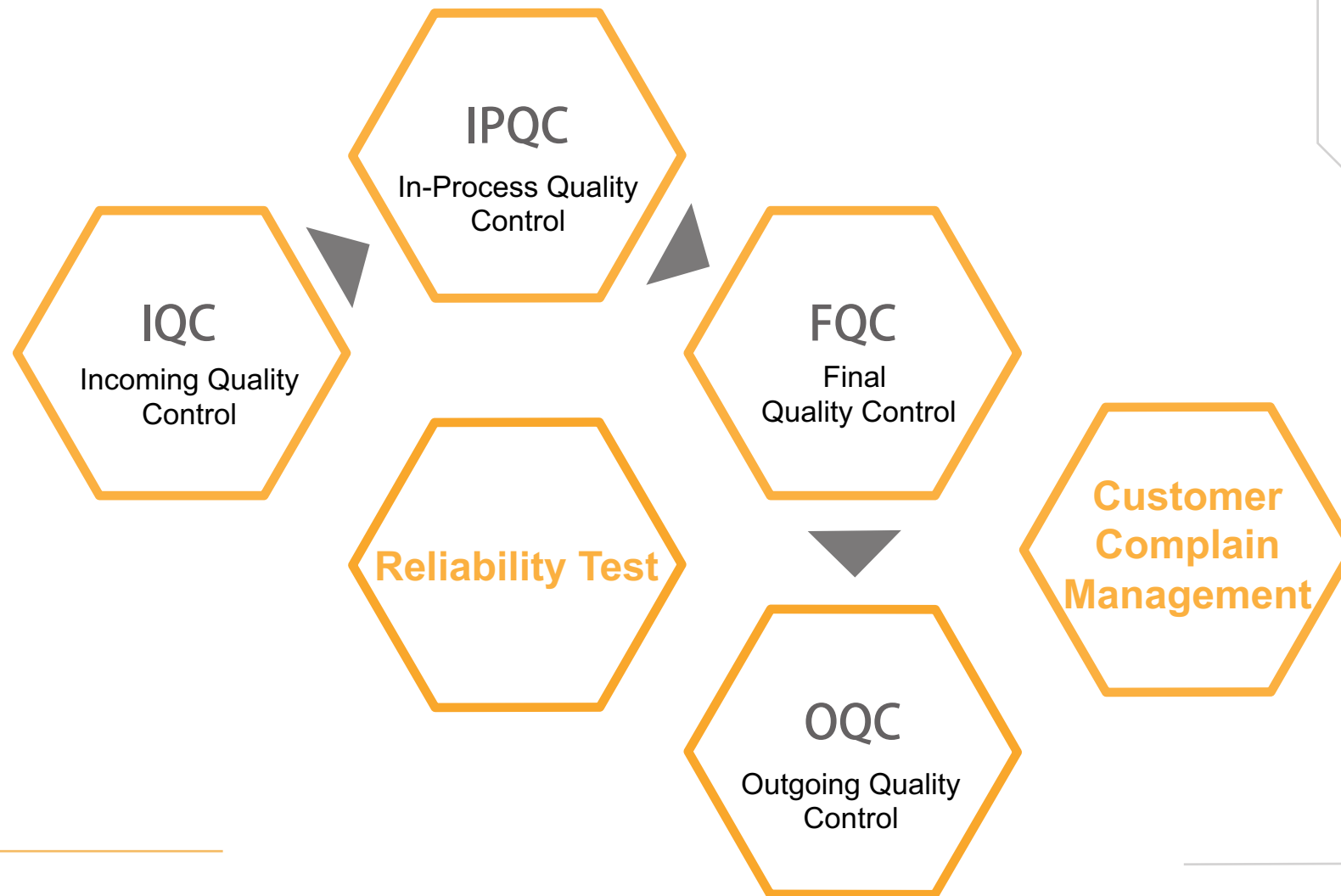
Hazardous Substance Process Management

ISO 13485:2016

Medical Devices Quality Management Systems



Quality Assurance





Testing Items

Environmental

Waterproof

Humidity Test

Salt Spray

Thermal Impact

Resist. to Solder Heat

Vibration

Electrical

Contact Resistance

Insulation

HIPOT

Rated Current

Mechanical

Retention Force

Life Cycle

Vibration

Mechanical Shock

Other

Drop

Soldering Side Force

Solderability



Testing Equipment

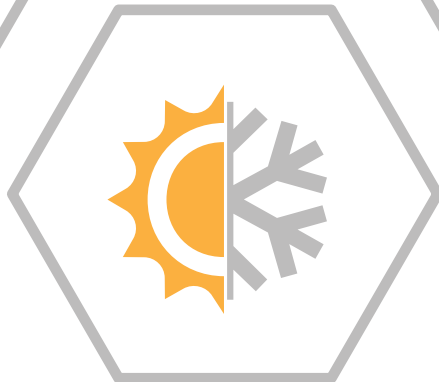
Rated Current

Max Rating : 1000Amp



Waterproof

Test Level : IPX7 Up



Thermal Impact

Range : -60~120°C

Resolution : 0.01°C



Vibration

Frequency : 3500Hz Max.

Acceleration : 50G Max.

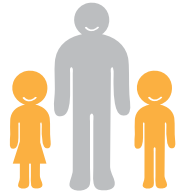


Certificate



ISO 9001
ISO 13485
ISO 14001
ISO 14064
IATF 16949
IECQ QC080000





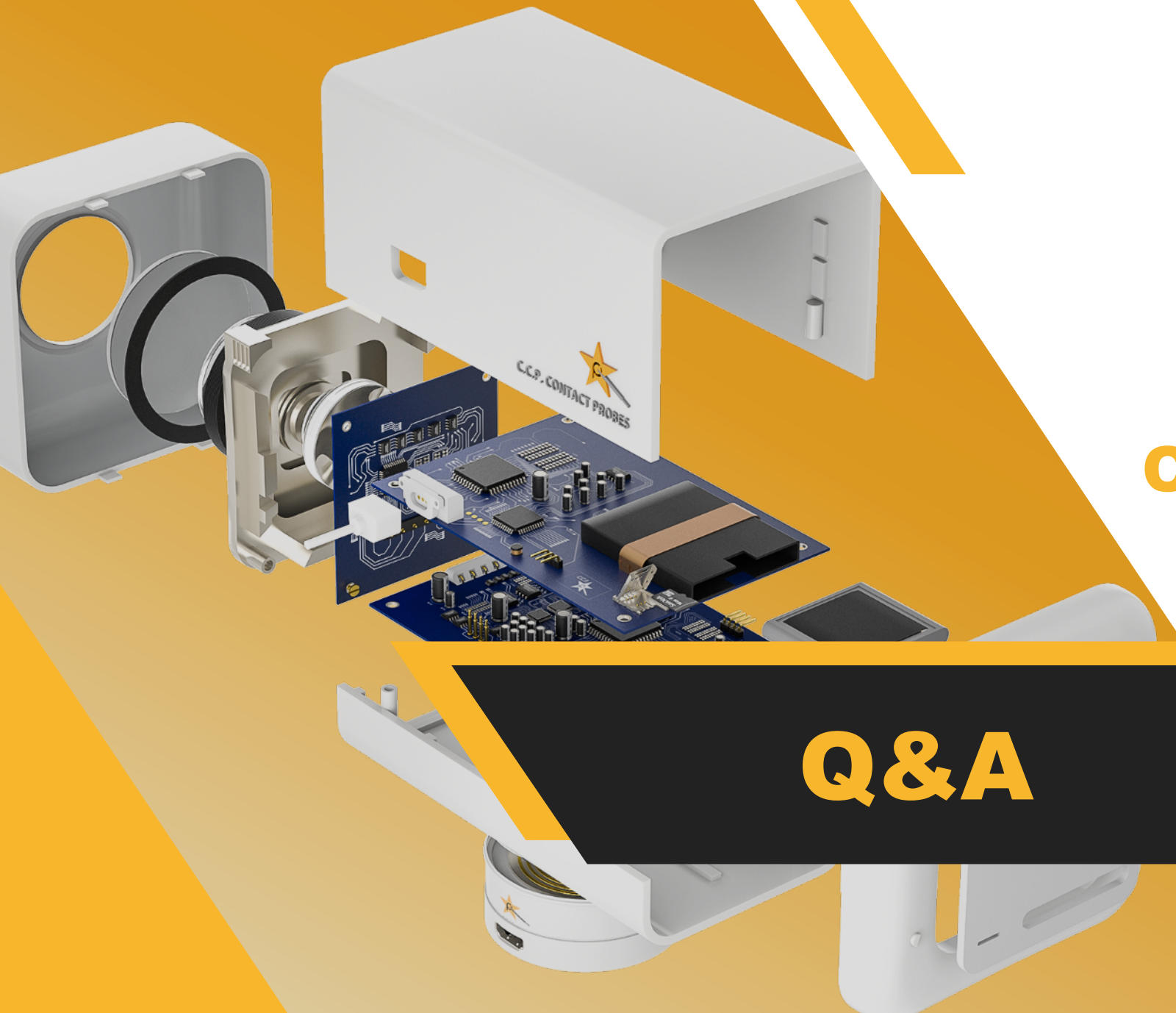
Summer camp for employees' children



Home visit to employees around the world



CCP offers tuition scholarship for employees' children



C.C.P.



CCP Contact Probes

Q&A

info@pccp.com.tw
www.ccpcontactprobes.com

