

# In-Circuit Testing Probes



In-Circuit Testing  
Printed Circuit Board Testing



C.C.P. CONTACT PROBES

# TABLE OF CONTENT

---

01	————	About Us
04	————	Probe Structure / Probe Series
06	————	Probe Tip Type
10	————	P Series List / R Series List / T Series List
16	————	P Series (Probes Series) / R Series (Probes Series)
39	————	CCP Series
44	————	GL Series
45	————	GP Series
47	————	CSP Series
51	————	Coaxial Probes / High Current Coaxial Probes
53	————	Peripherals of Fixture
56	————	Verification Ability

# ABOUT US

## Introduction

C.C.P. Contact Probes Co., Ltd. is a leading global manufacturer of Contact Probes, Pogo Pins, Testprobes, Springloaded Connectors, and Crown Spring Connectors.

In 1986 we began as a specialized provider of test probes and socket auxiliary solutions and slowly expanded our product portfolio in related industries such as electronic components manufacturing. Among our customers are renowned brands like Apple and Amazon and our products are revered by our customers for their exceptional reliability and superior quality.

Our research and development teams are continuously improving our existing products and bringing new innovations to the market to meet the growing demands of our clients. Since 2001 CCP Contact Probes has been a public traded company listed on the Taiwan Stock Exchange. Today CCP has subsidiaries in the United States, China, Germany, India, Japan and Singapore, meeting the needs of our customers around the world.

## Selected Customers

FOXCONN

Google



ADVANTEST

## Locations



# ABOUT US

## History

### History

2020	CCP Korea Established/ High Speed Network Cable Product Line
2019	CCP Japan, Singapore & India Established
2018	CCP Germany Established
2016	High Current Connector Product Line
2014	CCP USA Established
2003	Listed on Taiwan Stock Market (TW. 6217)
2002	Commercial Connector Product Line
2001	CCP Dongguan Factory Established
1986	CCP Established/ Testing Product Line

### Company Culture



Yearly Home Visit



Employee's Children  
Summer Camp



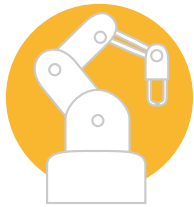
Tuition Subsidy  
for Employee's Children

# ABOUT US

## Advantages



Over 30 Years of Product Development Experience  
Servicing Industry-leading Clients

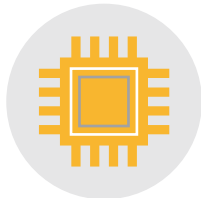


Turning and Plating Factory

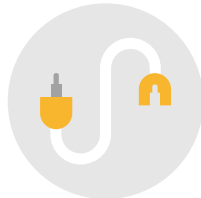


A Proven Track-record of Reliability, an Industry Certified Quality  
Management System, and State-of-the-art Production Equipment

## Product Lines



Testing  
Solutions



Commercial  
Connector Solutions



High Current  
Connector Solutions



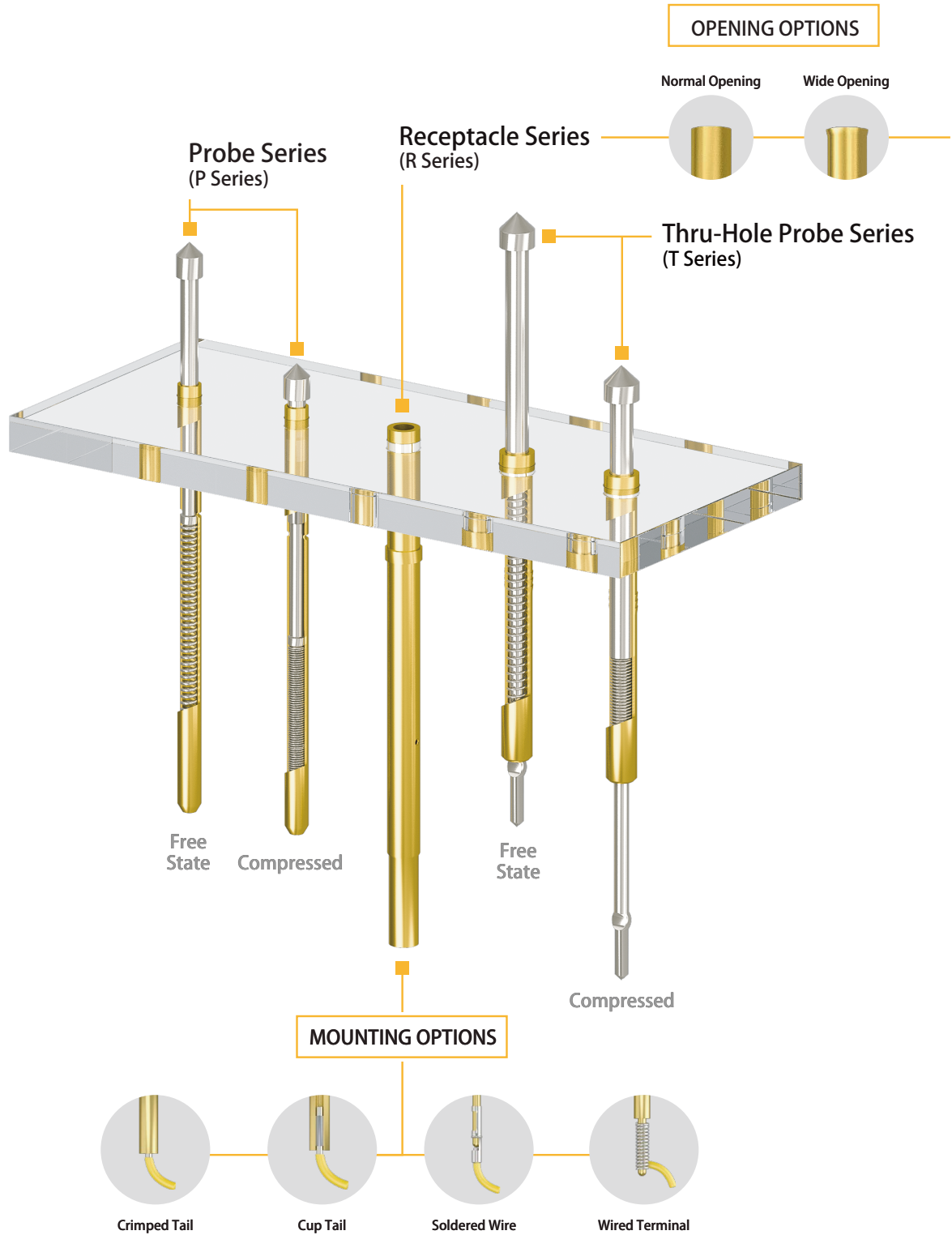
Industrial  
Connector Solutions

# STRUCTURE

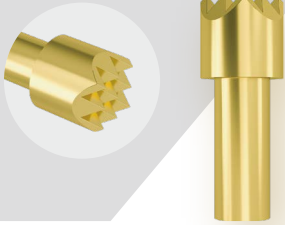


# CCP PROBE SERIES

P Series   R Series   T Series



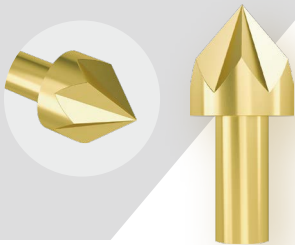
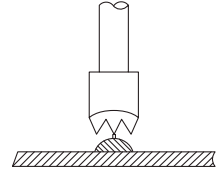
# PROBE TIP TYPE



## H

### L9 - Large 9 Points

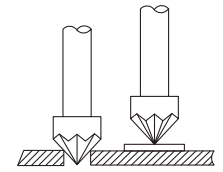
Used to test long leads, terminals, wire wrap posts and pads.



## K

### LS - Large Star

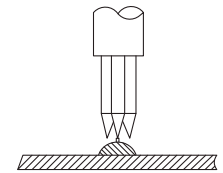
Used to penetrate through holes, pads and gold edge fingers. Will not be contaminated by dust.



## M3

### LN3 - Large Needle 3

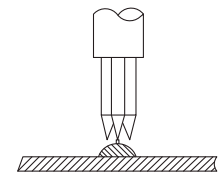
Used to test lands and pads. Needles can penetrate thin layers of oxides or contaminations.



## M7

### LN7 - Large Needle 7

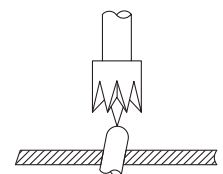
Used to test lands and pads. Needles can penetrate thin layers of oxides or contaminations.



## Q

### L7 - Large 7 Points

Used to test lands, terminals, and wire wrap posts.



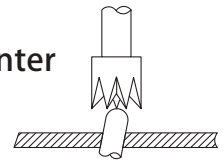




## Q

### L7M - Large 7 Points with Large Middle Center

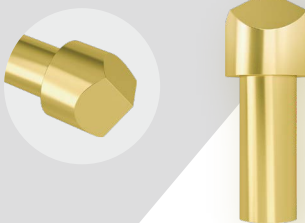
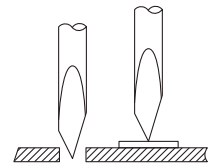
Used to test lands, terminals, and wire wrap posts.



## T

### M3C - Medium 3 Side Chiseled

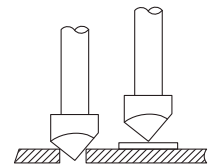
Used to test through holes, pads and gold edge fingers.



## T

### L3C - Large 3 Side Chiseled

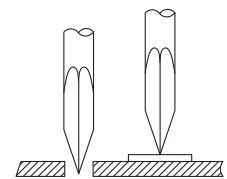
Used to test through holes, pads and gold edge fingers.



## S

### M4C - Medium 4 Side Chiseled

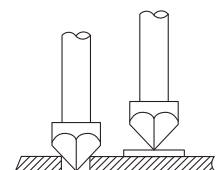
Used to test through holes, pads and gold edge fingers.



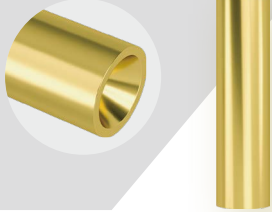
## S

### L4C - Large 4 Side Chiseled

Used to test through holes, pads and gold edge fingers.



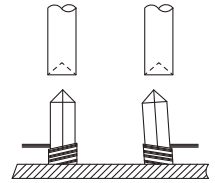
# PROBE TIP TYPE



## A

**MC - Medium Cup**

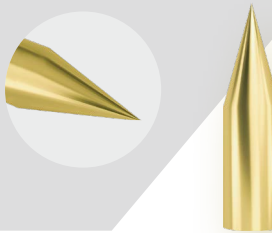
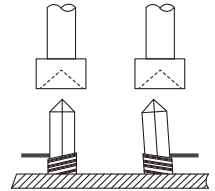
Used to test long leads, terminals and wire wrap posts.



## A

**LC - Large Cup**

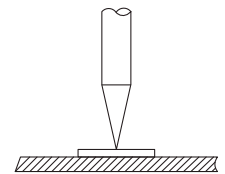
Used to test long leads, terminals and wire wrap posts.



## B

**MA - Medium Awl**

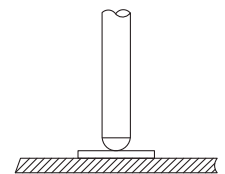
Used to test through holes, pads and gold edge fingers.



## D

**MR - Medium Round**

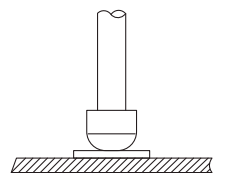
Used to test gold edge fingers and gold pads. Leaves no marks or indentations.



## D

**LR - Large Round**

Used to test gold edge fingers and gold pads. Leaves no marks or indentations.



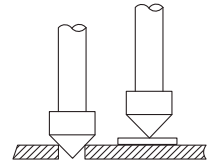
# PROBE TIP TYPE



## E

### LA - Large Awl

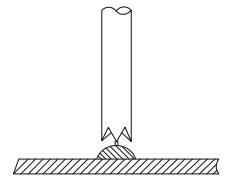
Used to test through holes, pads and gold edge fingers.



## F

### M4 - Medium 4 Points

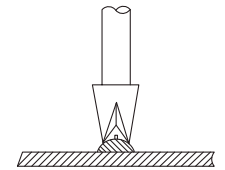
Used to test narrow lands. Will not be contaminated by dust.



## F

### L4 - Large 4 Points

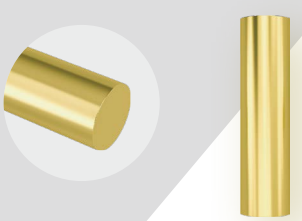
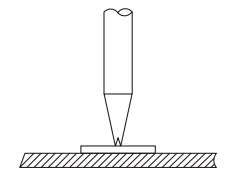
Used to test narrow lands. Will not be contaminated by dust.



## F

### S4 - Small 4 Points

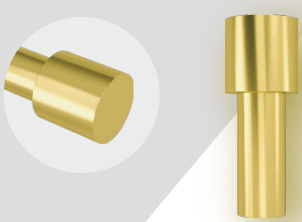
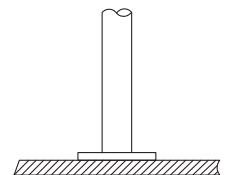
Used to test narrow lands. Will not be contaminated by dust.



## G

### MF - Medium Flat

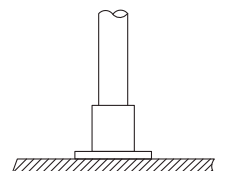
For testing pads and gold edge-fingers. Contact leaves no marks or indentations.



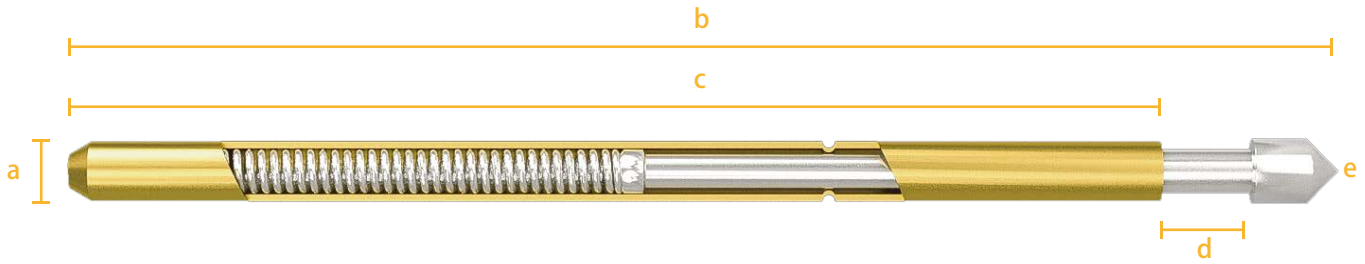
## G

### LF - Large Flat

For testing pads and gold edge-fingers. Contact assured leaves no marks or indentations.



# P SERIES LIST



## Coding Rule:

## Example:

ICT-P: a-b-c-d-e : f-g-h-i

ICT-P: 020-1150-1000-0150-E : BC-Au-BR-Au

P Series

Dimensions

Materials

P Series

Dimensions

Materials

a	b	c	d
Barrel Diameter in mm	Full Length in mm	Barrel Length in mm	Full Stroke in mm
Recommended Pitch 0.45mm			
0.20	11.50	10.00	01.50
Recommended Pitch 0.50mm			
0.26	12.50	11.00	01.50
Recommended Pitch 0.65mm			
0.30	11.50	10.00	01.50
Recommended Pitch 0.70mm			
0.35	12.50	11.00	01.50
Recommended Pitch 0.80mm			
0.38	12.00	10.00	02.00
0.38	12.50	10.00	02.00
Recommended Pitch 0.90mm			
0.48	12.00	10.00	02.00
0.48	12.60	10.00	02.00
Recommended Pitch 1.00mm			
0.58	15.00	13.00	02.00
0.58	15.60	13.00	02.00
Recommended Pitch 1.27mm			
0.68	16.35	13.00	03.35
0.68	16.55	13.00	02.65
0.68	24.70	18.50	04.20

e

Tip Type  
See Tip Type Page

f

Plunger Base  
BC: Beryllium Copper  
SK4: High Carbon Steel

g

Plunger Plating  
Au: Gold  
Rh: Rhodium  
NA: None

h

Barrel Base  
PB: Phosphor Bronze  
BR: Brass

i

Barrel Plating  
Au: Gold

# P SERIES LIST

<b>a</b>	<b>b</b>	<b>c</b>	<b>d</b>	<b>e</b>
Barrel Diameter in mm	Full Length in mm	Barrel Length in mm	Full Stroke in mm	Tip Type See Tip Type Page
Recommended Pitch 1.90 mm				<b>f</b> Plunger Base BC: Beryllium Copper SK4:High Carbon Steel
1.01	16.35	13.00	03.35	
1.01	17.04	13.00	02.54	
1.01	24.20	18.50	04.20	
1.01	33.30	25.00	06.30	
1.01	38.30	25.00	06.30	
Recommended Pitch 2.54 mm				<b>g</b> Plunger Plating Au: Gold Rh: Rhodium NA: None
1.36	23.50	18.50	03.00	
1.36	24.70	18.50	04.20	
1.36	33.30	25.00	06.30	
1.36	38.30	25.00	06.30	
1.37	09.70	07.50	02.20	
1.37	10.00	07.50	01.50	
Recommended Pitch 3.17 mm				<b>h</b> Barrel Base PB: Phosphor Bronze BR: Brass
2.00	33.35	25.00	06.35	
Recommended Pitch 3.97mm				<b>i</b> Barrel Plating Au: Gold
2.36	34.10	25.00	06.60	

# R SERIES LIST



Coding Rule:

**ICT-R:a-b-c-d-e:f-g**

R Series    Dimensions    Materials

Example:

**ICT-R:020-032-0900-00-e:g-h**

R Series    Dimensions    Materials

a	b	c	d	e
Probe Barrel Diameter in mm	Receptacle Diameter in mm	Probe Holding Length in mm	Collar Distance in mm	Tail Type
Recommended Pitch 0.45mm				
0.20	0.32	09.00	-	N: No Tail
Recommended Pitch 0.50mm				
0.26	0.35	10.30	-	C: Cup Tail
Recommended Pitch 0.65mm				
0.30	0.40	09.00	-	W9: Square Tail for Wire Wrapping Tail Length 9mm
Recommended Pitch 0.70mm				
0.35	0.43	10.00	-	T5: Round Tail for Crimped Terminal Tail Length 5mm
0.35	0.45	10.00	-	S: Soldered Wire
Recommended Pitch 0.80mm				
0.38	0.53	09.00	-	f
Recommended Pitch 0.90mm				
0.48	0.62	09.00	-	Receptacle Base
Recommended Pitch 1.00mm				
0.58	0.72	12.00	-	PB: Phosphor Bronze
Recommended Pitch 1.27mm				
0.68	0.86	12.75	-	BR: Brass
0.68	0.86	12.75	2.5	g
0.68	0.86	18.50	-	Receptacle Plating
0.68	0.86	18.50	2.5	Au: Gold

# R SERIES LIST

a	b	c	d
Probe Barrel Diameter in mm	Receptacle Diameter in mm	Probe Holding Length in mm	Collar Distance in mm
Recommended Pitch 1.27mm			
1.01	1.31	12.70	-
1.01	1.31	12.70	4.0
1.01	1.31	12.70	2.5
1.01	1.31	18.50	-
1.01	1.31	18.50	2.5
1.01	1.31	18.50	4.0
1.01	1.31	25.00	-
1.01	1.31	25.00	7.5
Recommended Pitch 2.54mm			
1.36	1.66	18.50	-
1.36	1.66	18.50	2.5
1.36	1.66	18.50	5.5
1.36	1.66	25.00	-
1.36	1.66	25.00	2.5
1.36	1.66	25.00	5.0
1.36	1.66	25.00	7.5
1.37	1.66	07.50	2.5
1.37	1.66	07.50	-
Recommended Pitch 3.17mm			
2.00	2.36	25.00	-
2.00	2.36	25.00	7.5
Recommended Pitch 3.97mm			
2.36	2.69	24.70	-
2.36	2.69	24.70	7.6

## e

### Tail Type

N: No Tail

C: Cup Tail

W9: Square Tail for  
Wire Wrapping  
Tail Length 9mm

T5: Round Tail for  
Crimped Terminal  
Tail Length 5mm

S: Soldered Wire

## f

### Receptacle Base

PB: Phosphor Bronze

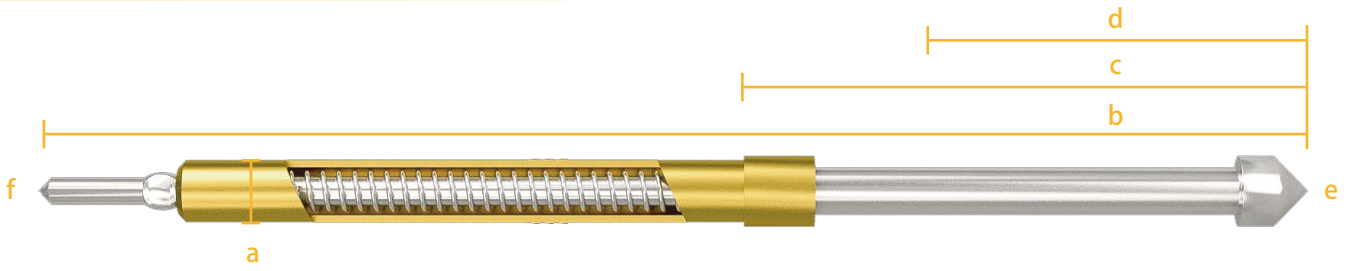
BR: Brass

## g

### Receptacle Plating

Au: Gold

# T SERIES LIST



## Coding Rule:

**ICT-T:a-b-c-d-e-f:g-h-i-j**

## Example:

**ICT-T:098-2050-0700-0450-LA-T5:BC-Au-PB-Au**

T Series    Dimensions    Materials    T Series    Dimensions    Materials

a	b	c	d
Barrel Diameter in mm	Full Length in mm	Board to Tip Length in mm	Full Stroke in mm
Recommended Pitch 1.70mm			
0.98	20.50	07.00	04.50
Recommended Pitch 2.00mm			
1.34	27.00	10.00	06.00
Recommended Pitch 2.50mm			
1.83	36.00	16.00	12.00
2.00	43.00	16.00	06.00
2.00	50.00	23.00	06.00
Recommended Pitch 0.80mm			
2.33	38.00	16.00	10.50
Recommended Pitch 0.90mm			
3.00	50.00	16.00	06.00
3.00	54.00	20.00	06.00
3.00	54.00	23.00	06.00
Recommended Pitch 1.27mm			
3.23	38.00	16.00	10.00

## e

**Tip Type**  
See Tip Type Page

## f

**Tail Type**  
**N:** No Tail  
**C:** Cup Tail  
**W9:** Square Tail for Wire Wrapping  
 Tail Length 9mm  
**T5:** Round Tail for Crimped Terminal  
 Tail Length 5mm  
**S:** Soldered Wire

## g

**Plunger Base**  
**BC:** Beryllium Copper  
**PB:** Phosphor Bronze  
**SK4:** High Carbon Steel

## h

**Plunger Plating**  
**Au:** Gold  
**Rh:** Rhodium  
**Ni:** Nickel  
**NA:** None

## i

**Barrel Base**  
**PB:** Phosphor Bronze  
**BR:** Brass  
**POM:** Polyoxymethylene

## j

**Barrel Plating**  
**Au:** Gold  
**NA:** None



# SERIES LIST

## P Series

P-020	P-0
P-026	P-1
P-030	P-11
P-035	P-111
P-038	P-21
P-048	P-02
P-058	P-25

## R Series

R-0
R-1
R-11
R-111
R-2
R-02
R-25

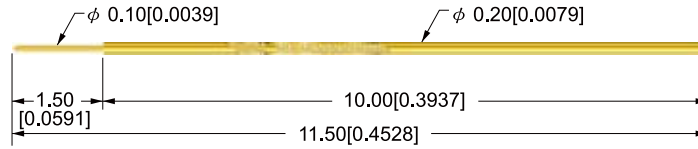
## CCP Series

CCP-05
CCP-10
CCP-15
CCP-101

# P-020

## PROBES SERIES

Dimensions In Millimeter (inch)



**Plunger**  
SK4 (High Carbon Steel)  
with Rhodium Plated or Gold Plated

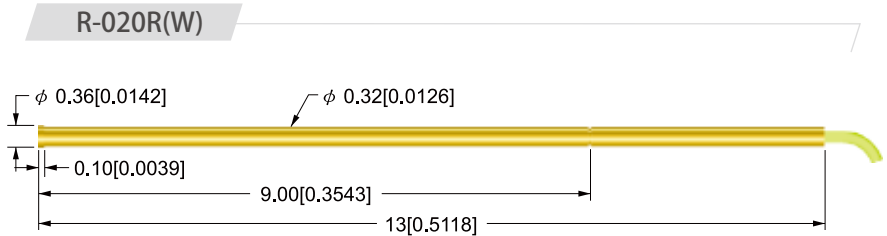
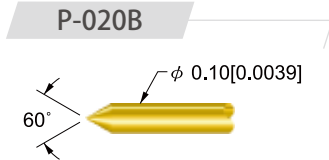
**Barrel**  
Phosphor Bronze with Gold Plated

**Spring**  
Music Wire with Gold Plated

**Receptacle**  
Phosphor Bronze with Gold Plated

Specification	
Min. Center	0.45mm (0.0177)
Full Stroke	1.5mm (0.0059)
Full Stroke Spring Force ( $\pm 20\%$ )	15g (0.53oz)
2/3 Stroke Spring Force ( $\pm 20\%$ )	10g (0.35oz)
Current Rating	0.3A
Contact Resistance	260m $\Omega$
Recommended Hole Size	0.33mm (0.013)

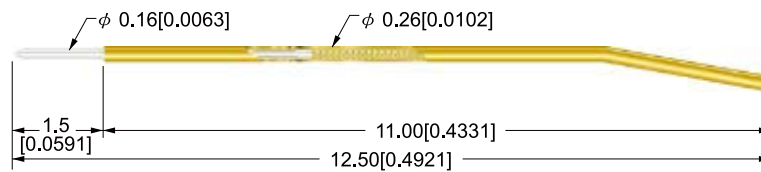
\*Specification Subject to change without notice



Receptacle with Terminal Wire

Wire Length: 700mm

Dimensions In Millimeter (inch)



### Plunger

SK4 (High Carbon Steel)  
with Rhodium Plated or Gold Plated

### Barrel

Phosphor Bronze with Gold Plated

### Spring

Music Wire with Gold Plated

### Receptacle

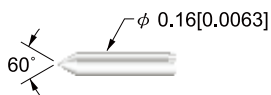
Phosphor Bronze with Gold Plated

### Specification

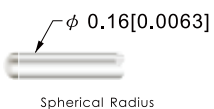
Min. Center	0.50mm (0.00197)
Full Stroke	1.5mm (0.059)
Full Stroke Spring Force ( $\pm 20\%$ )	20g (0.70oz)
2/3 Stroke Spring Force ( $\pm 20\%$ )	15g (0.53oz)
Current Rating	0.3A
Contact Resistance	220m $\Omega$
Recommended Hole Size	0.368 - 0.38st (0.0145)-(0.0150)

\*Specification Subject to change without notice

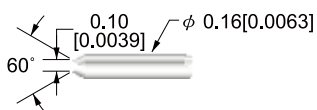
### P-026B



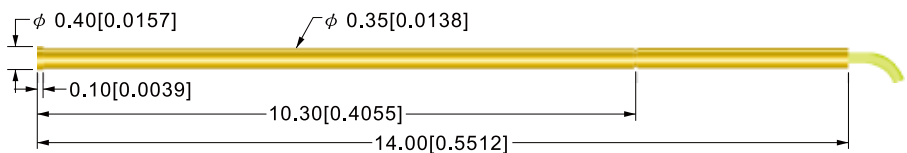
### P-026D



### P-026F



### R-026R(W)



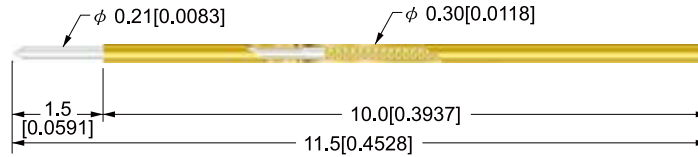
Receptacle with Terminal Wire

Wire Length: 700mm

# P-030

## PROBES SERIES

Dimensions In Millimeter (inch)



**Plunger**  
SK4 (High Carbon Steel)  
with Rhodium Plated or Gold Plated

**Barrel**  
Phosphor Bronze with Gold Plated

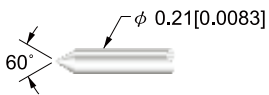
**Spring**  
Music Wire with Gold Plated

**Receptacle**  
Phosphor Bronze with Gold Plated

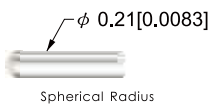
Specification	
Min. Center	0.65mm (0.0256)
Full Stroke	1.5mm (0.059)
Full Stroke Spring Force ( $\pm 20\%$ )	50g (1.76oz)
2/3 Stroke Spring Force ( $\pm 20\%$ )	40g (1.41oz)
Current Rating	0.5A
Contact Resistance	200m $\Omega$
Recommended Hole Size	0.4064mm (0.0160)~0.45mm (0.0177)

\*Specification Subject to change without notice

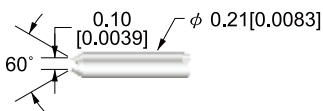
### P-030B



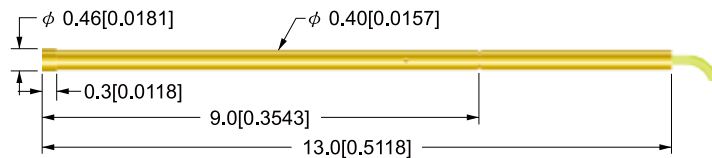
### P-030D



### P-030F



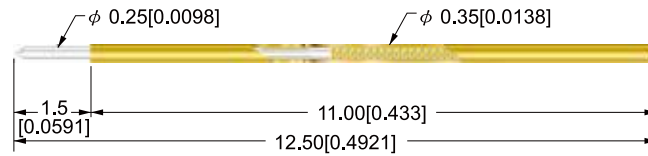
### R-030R(W)



Receptacle with Terminal Wire

Wire Length: 700mm

Dimensions In Millimeter (inch)



### Plunger

SK4 (High Carbon Steel)  
with Rhodium Plated or Gold Plated

### Barrel

Phosphor Bronze with Gold Plated

### Spring

Music Wire with Gold Plated

### Receptacle

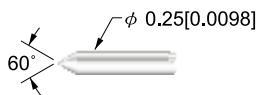
Phosphor Bronze with Gold Plated

### Specification

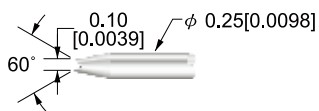
Min. Center	0.70mm (0.00197)
Full Stroke	1.5mm (0.059)
Full Stroke Spring Force ( $\pm 20\%$ )	40g (0.70oz)
2/3 Stroke Spring Force ( $\pm 20\%$ )	30g (0.53oz)
Current Rating	0.5A
Contact Resistance	130m $\Omega$
Recommended Hole Size	0.45mm (0.0177)~0.47 (0.0185)

\*Specification Subject to change without notice

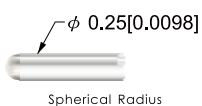
### P-035B



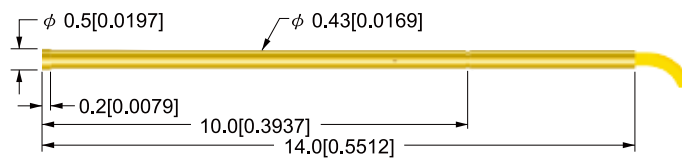
### P-035F



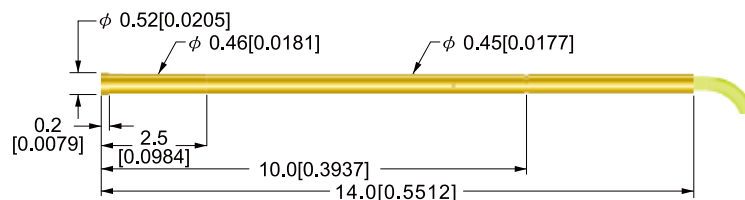
### P-035D



### R-035R(W)



### R-035R1(C)(W)



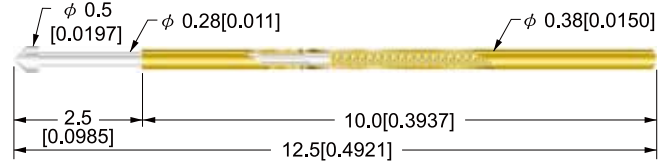
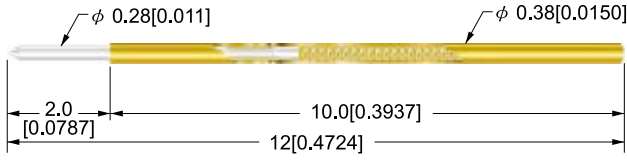
Receptacle with Terminal Wire

Wire Length: 700mm

# P-038

## PROBES SERIES

Dimensions In Millimeter (inch)



### Plunger

SK4 (High Carbon Steel)  
with Rhodium Plated or Gold Plated

### Barrel

Phosphor Bronze with Gold Plated

### Spring

Music Wire with Gold Plated

### Receptacle

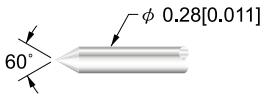
Phosphor Bronze with Gold Plated

### Specification

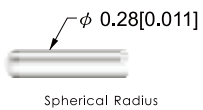
Min. Center	0.8mm (0.0315)
Full Stroke	2.0mm (0.0787)
Full Stroke Spring Force ( $\pm 20\%$ )	40g (1.41oz)
2/3 Stroke Spring Force ( $\pm 20\%$ )	30g (1.06oz)
Current Rating	0.5A
Contact Resistance	180m $\Omega$
Recommended Hole Size	0.52mm (0.0204)~0.57mm (0.0224)

\*Specification Subject to change without notice

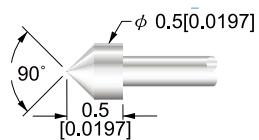
### P-038BS



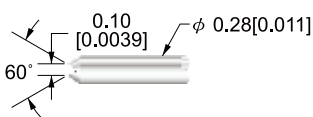
### P-038DS



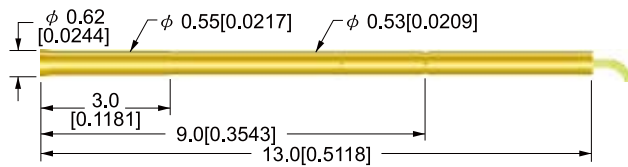
### P-038ES



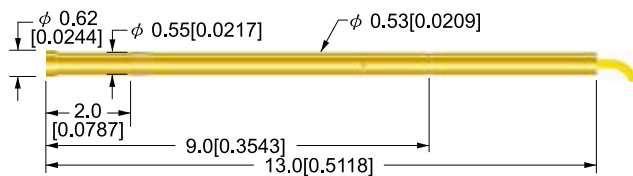
### P-038FS



### R-038VS(W)



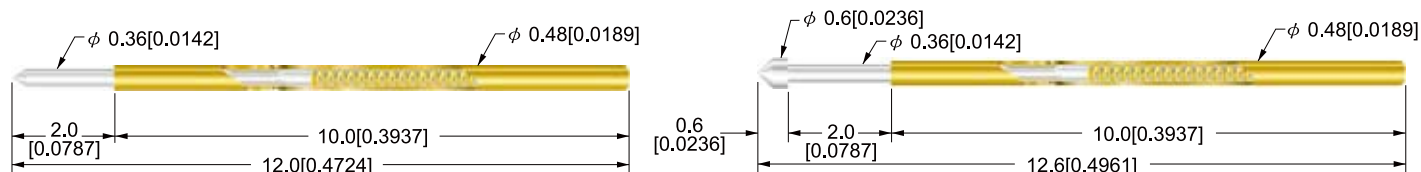
### R-038R1(C)(W)



Receptacle with Terminal Wire

Wire Length: 700mm

Dimensions In Millimeter (inch)



### Plunger

SK4 (High Carbon Steel)  
with Rhodium Plated or Gold Plated

### Barrel

Phosphor Bronze with Gold Plated

### Spring

Music Wire with Gold Plated

### Receptacle

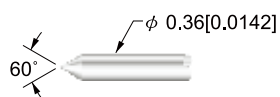
Phosphor Bronze with Gold Plated

### Specification

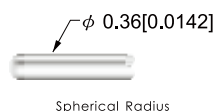
Min. Center	0.90mm (0.0354)
Full Stroke	2.0mm (0.0787)
Full Stroke Spring Force ( $\pm 20\%$ )	60g (2.12oz)
2/3 Stroke Spring Force ( $\pm 20\%$ )	45g (1.59oz)
Current Rating	1A
Contact Resistance	150m $\Omega$
Recommended Hole Size	0.60mm (0.0236)~0.65mm (0.0256)

\*Specification Subject to change without notice

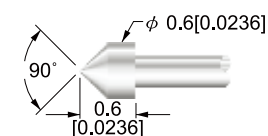
### P-048BS



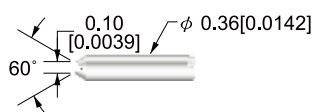
### P-048DS



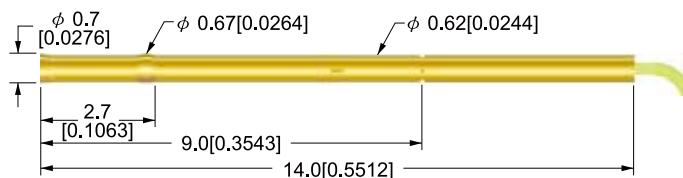
### P-048ES



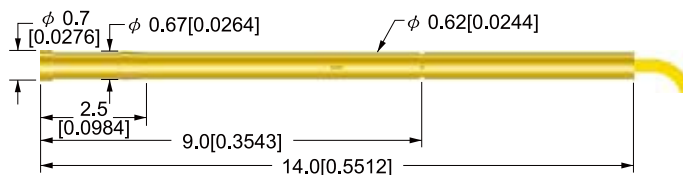
### P-048FS



### R-048VS(W)



### R-048R(C)(W)



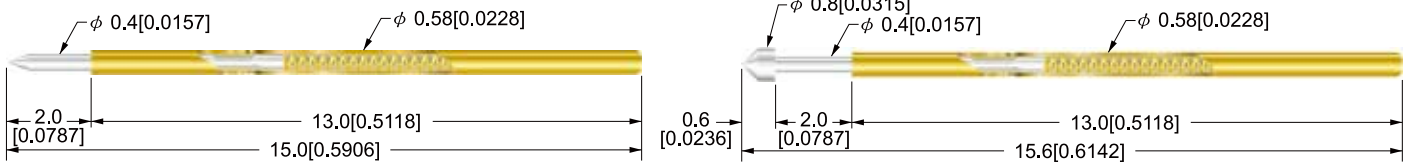
Receptacle with Terminal Wire

Wire Length: 700mm

# P-058

## PROBES SERIES

Dimensions In Millimeter (inch)

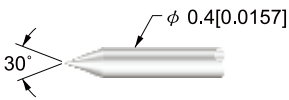


- Plunger**  
SK4 (High Carbon Steel)  
with Rhodium Plated or Gold Plated
- Barrel**  
Phosphor Bronze with Gold Plated
- Spring**  
Music Wire with Gold Plated
- Receptacle**  
Phosphor Bronze with Gold Plated

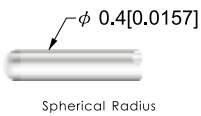
Specification	
Min. Center	1.0mm (0.0394)
Full Stroke	2.0mm (0.0787)
Full Stroke Spring Force (±20%)	60g (2.12oz)
2/3 Stroke Spring Force (±20%)	45g (1.59oz)
Current Rating	1A
Contact Resistance	120mΩ
Recommended Hole Size	0.70mm (0.0275)~0.76mm (0.0299)

\*Specification Subject to change without notice

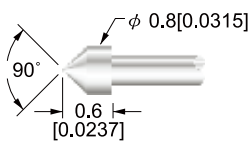
### P-058B



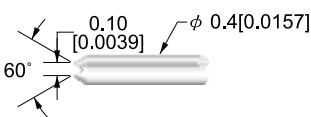
### P-058D



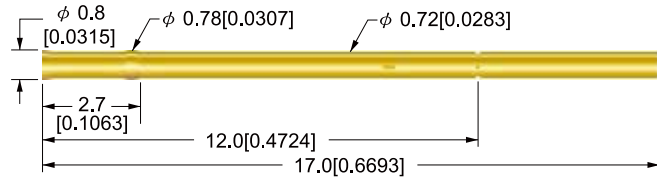
### P-058E



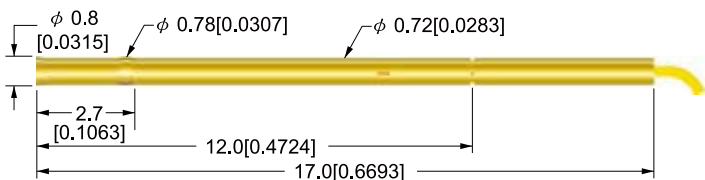
### P-058F3



### R-058VC



### R-058V(W)

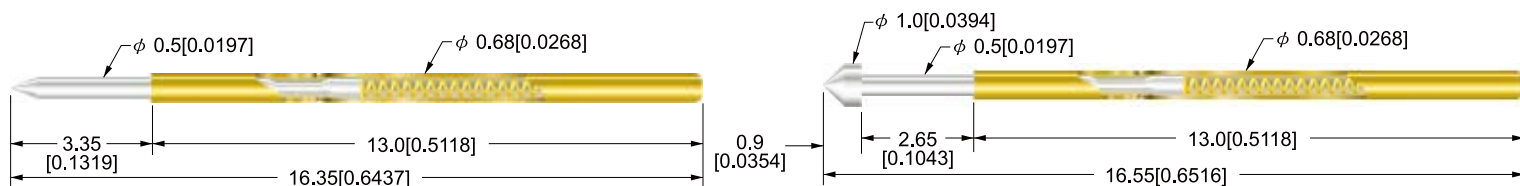


Receptacle with Terminal Wire

Wire Length: 700mm



Dimensions In Millimeter (inch)



### Plunger

Beryllium Copper or SK4  
with Rhodium Plated or Gold Plated

### Barrel

Phosphor Bronze with Gold Plated

### Spring

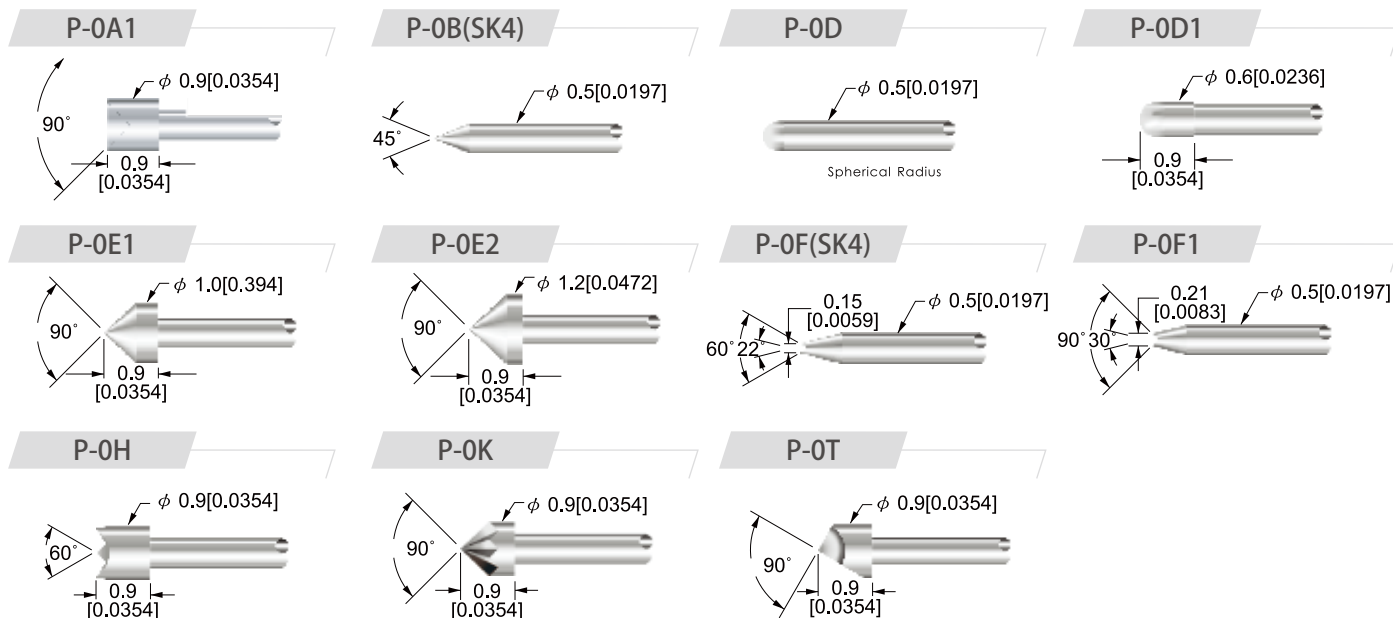
Music Wire with Gold Plated

### Receptacle

Phosphor Bronze with Gold Plated

Specification	
Min. Center	1.27mm (0.0500)
Full Stroke	3.35mm (0.1319) / 2.65mm (0.1043)
Full Stroke Spring Force ( $\pm 20\%$ )	100g (3.53oz)
2/3 Stroke Spring Force ( $\pm 20\%$ )	65g (2.29oz)
Current Rating	1.5A
Contact Resistance	70m $\Omega$
Recommended Hole Size	0.90mm (0.0354)~0.95mm (0.0374)

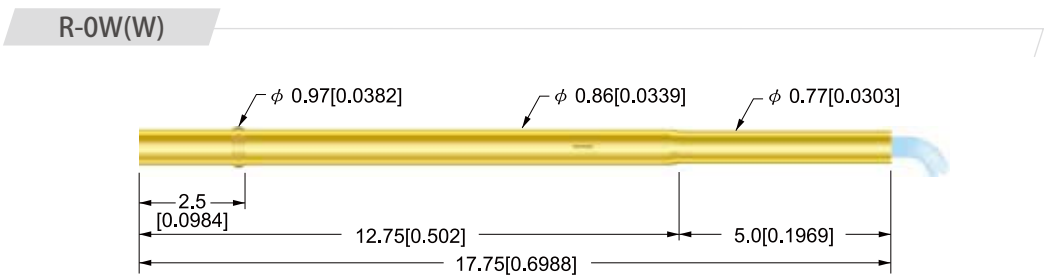
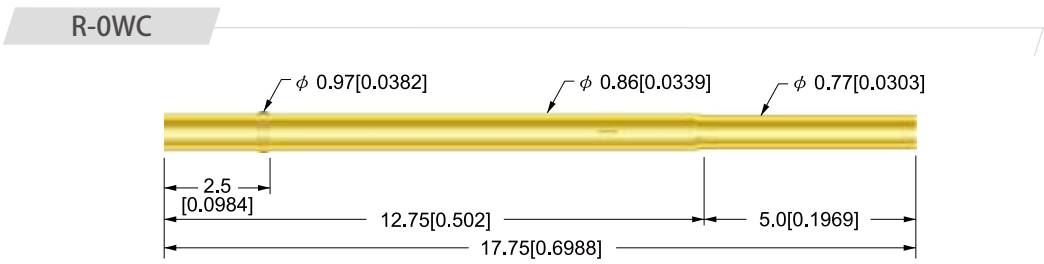
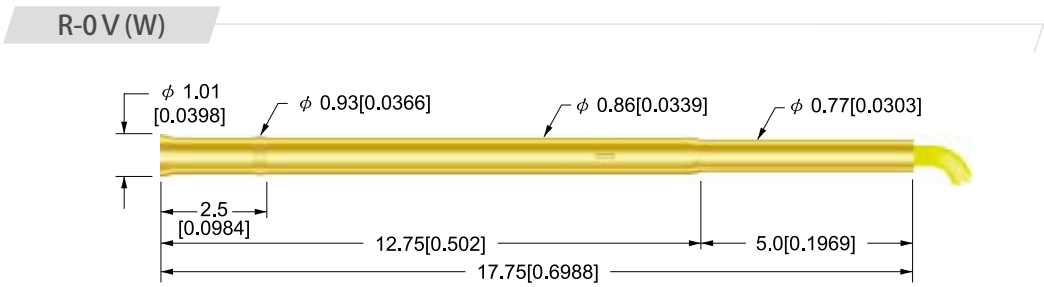
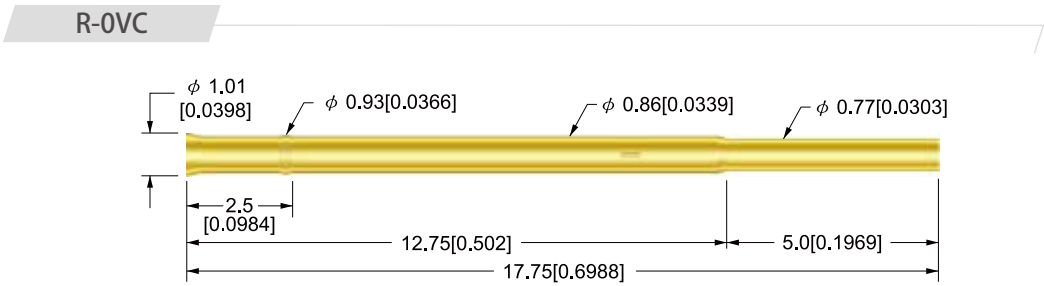
\*Specification Subject to change without notice



# R-0

## RECEPTACLES SERIES

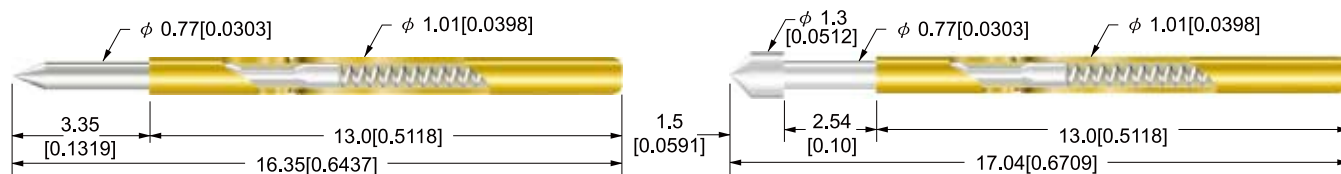
Dimensions In Millimeter (inch)



Receptacle with Terminal Wire

Wire Length: 700mm

Dimensions In Millimeter (inch)



### Plunger

Beryllium Copper or SK4  
with Rhodium Plated or Gold Plated

### Barrel

Phosphor Bronze with Gold Plated

### Spring

Stainless Steel

### Receptacle

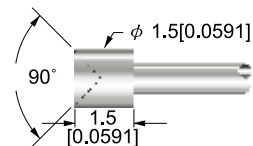
Phosphor Bronze or Brass  
with Gold Plated

### Specification

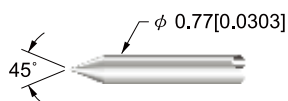
Min. Center	1.90mm (0.0748)
Full Stroke	3.35mm (0.1319) / 2.54mm (0.1000)
Full Stroke Spring Force ( $\pm 20\%$ )	128g (4.51oz)
2/3 Stroke Spring Force ( $\pm 20\%$ )	90g (3.17oz)
Current Rating	3A
Contact Resistance	30m $\Omega$
Recommended Hole Size	1.35mm (0.0531)~1.40mm (0.0551)

\*Specification Subject to change without notice

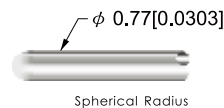
P-1A1



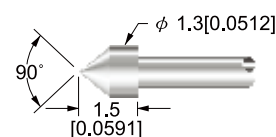
P-1B(SK4)



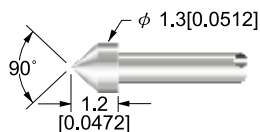
P-1D



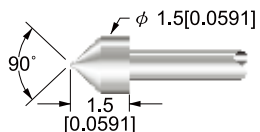
P-1E1



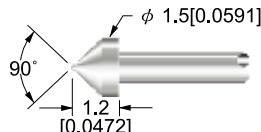
P-1E1(S)



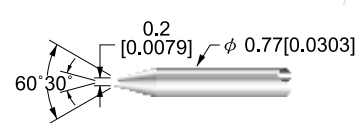
P-1E2



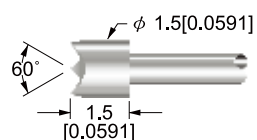
P-1E2(S)



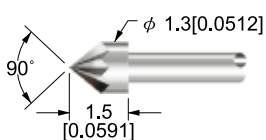
P-1F(SK4)



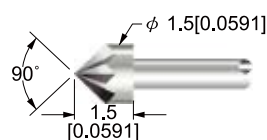
P-1H



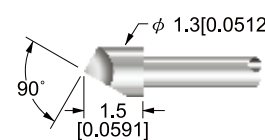
P-1K



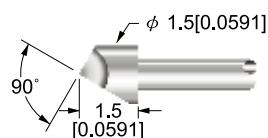
P-1K1



P-1T



P-1T1

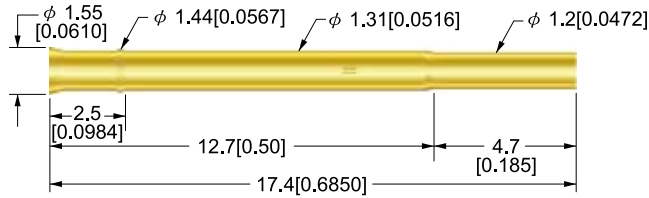


# R-1

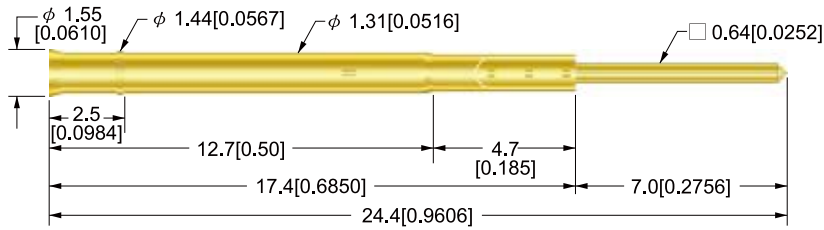
## RECEPTACLES SERIES

Dimensions In Millimeter (inch)

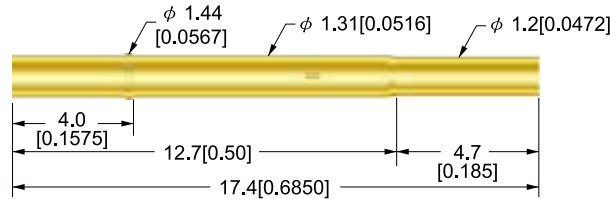
R-1VC



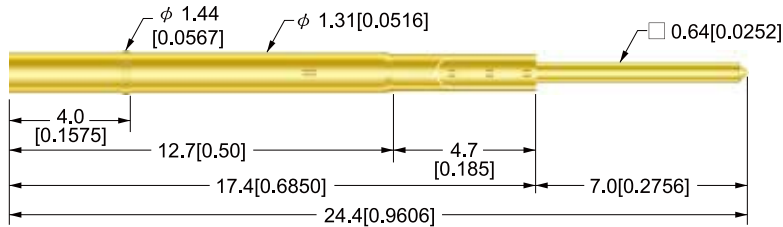
R-1V-2



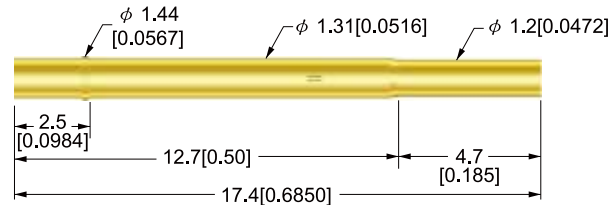
R-1W2C



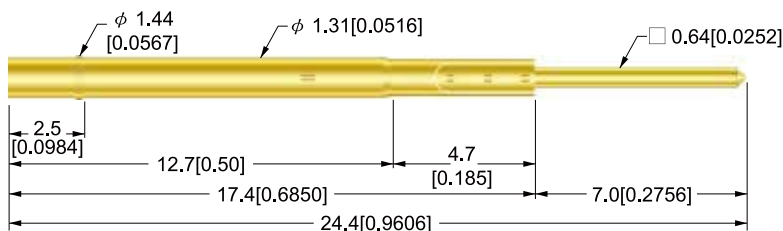
R-1W2-2



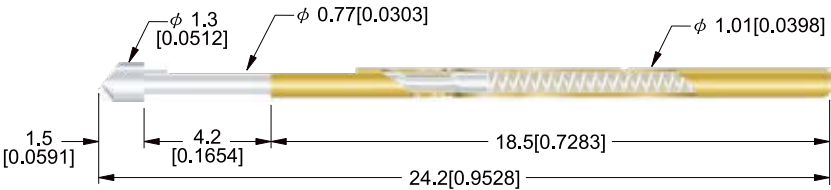
R-1W1C



R-1W1-2



Dimensions In Millimeter (inch)



### Plunger

Beryllium Copper or SK4  
with Rhodium Plated or Gold Plated

### Barrel

Phosphor Bronze with Gold Plated

### Spring

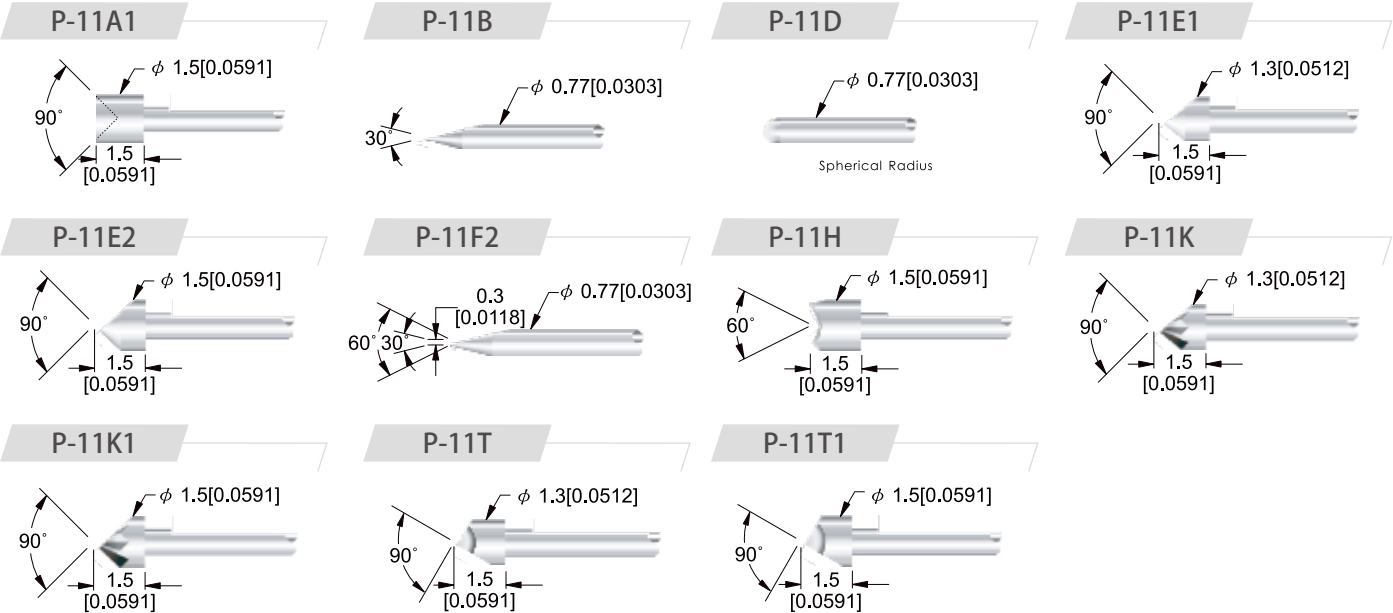
Stainless Steel

### Receptacle

Phosphor Bronze or Brass  
with Gold Plated

Specification	
Min. Center	1.90mm (0.0749)
Full Stroke	4.20mm (01654)
Full Stroke Spring Force (±20%)	150g (5.29oz)
2/3 Stroke Spring Force (±20%)	80g (2.82oz)
Current Rating	3A
Contact Resistance	30mΩ
Recommended Hole Size	1.35mm (0.0531)~1.40mm (0.0551)

\*Specification Subject to change without notice

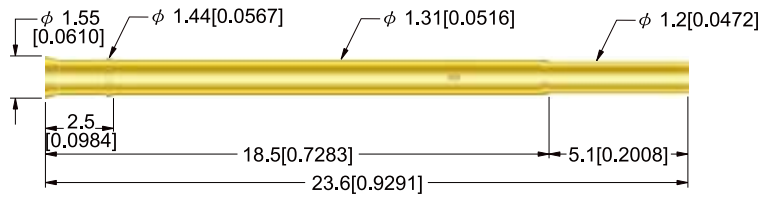


# R-11

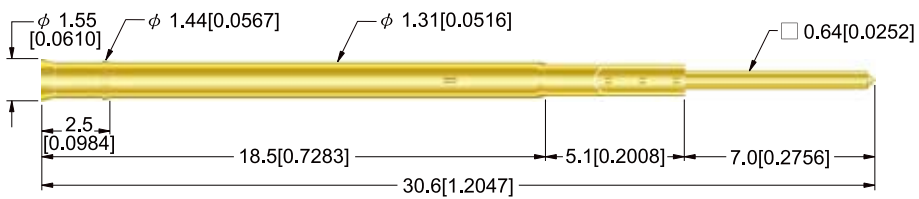
## RECEPTACLES SERIES

Dimensions In Millimeter (inch)

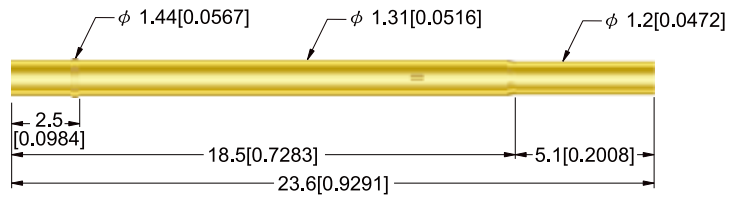
R-11VC



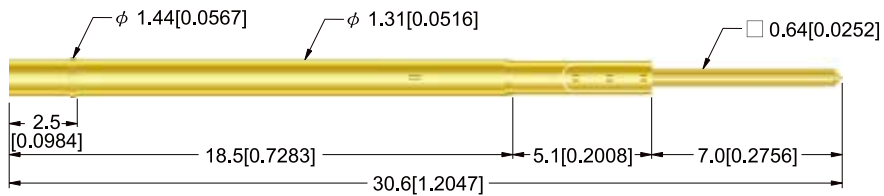
R-11V-2



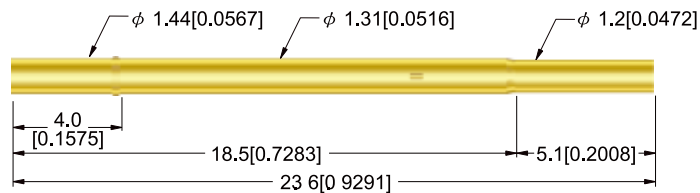
R-11W1-2



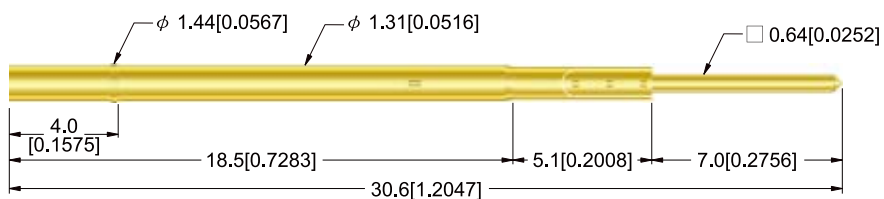
R-11W1-2



R-11W2C



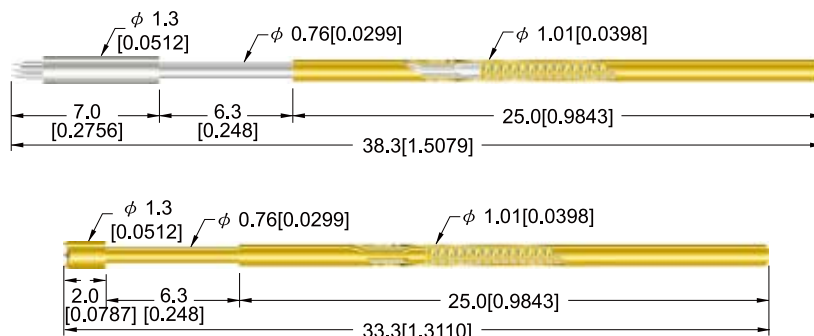
R-11W2-2



Receptacle with Terminal Wire

Wire Length: 700mm

Dimensions In Millimeter (inch)



### Plunger

Beryllium Copper or SK4  
with Gold Plated or Nickel Plated

### Barrel

Phosphor Bronze with Gold Plated

### Spring

Music Wire with Gold Plated

### Receptacle

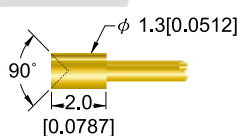
Phosphor Bronze or Brass  
with Gold Plated

### Specification

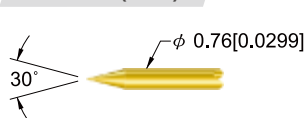
Min. Center	1.90mm (0.0748)
Full Stroke	6.30mm (0.2480)
Full Stroke Spring Force ( $\pm 20\%$ )	250g (8.82oz)
2/3 Stroke Spring Force ( $\pm 20\%$ )	170g (6.0oz)
Current Rating	3A
Contact Resistance	30m $\Omega$
Recommended Hole Size	1.35mm (0.0531)~1.40mm (0.0551)

\*Specification Subject to change without notice

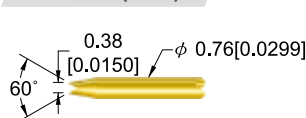
P-111A



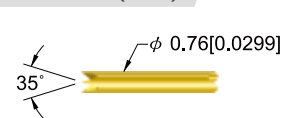
P-111B(SK4)



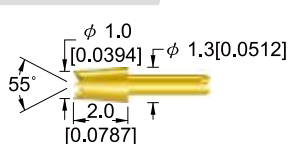
P-111F(SK4)



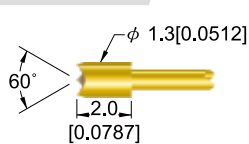
P-111F1(SK4)



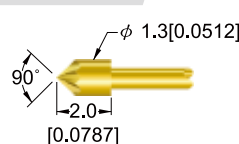
P-111F2



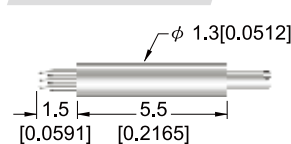
P-111H



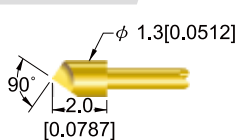
P-111K



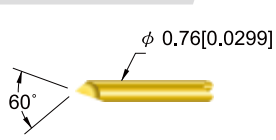
P-111M3(SK4)



P-111T1



P-111T2(SK4)

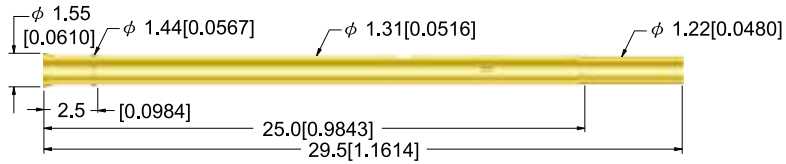


# R-111

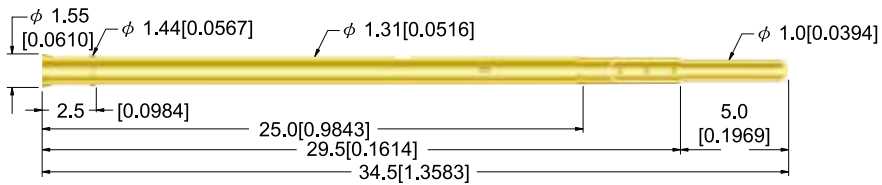
## RECEPTACLES SERIES

Dimensions In Millimeter (inch)

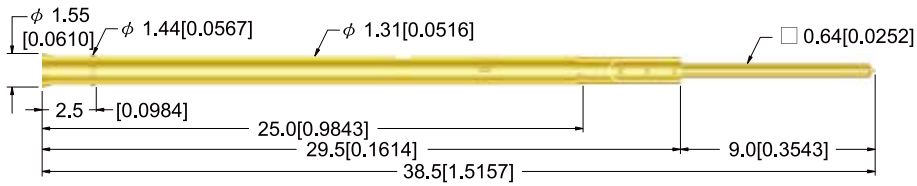
### R-111VC



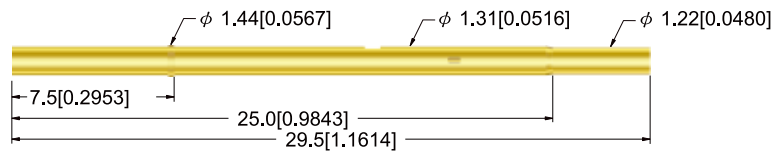
### R-111VT



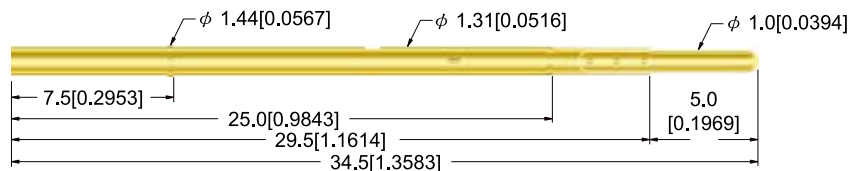
### R-111V-1



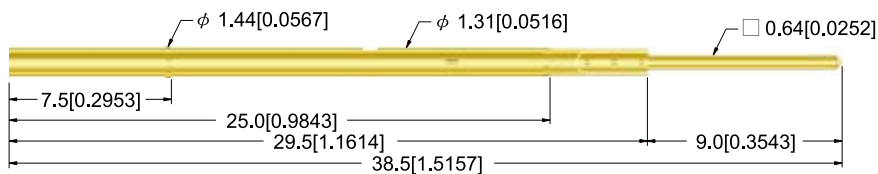
### R-111WC



### R-111WT



### R-111W-1



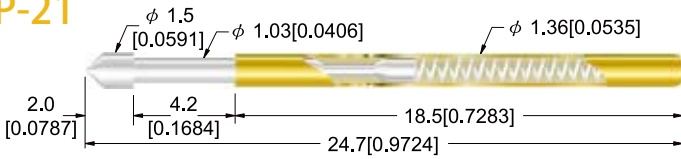
Receptacle with Terminal Wire

Wire Length: 700mm

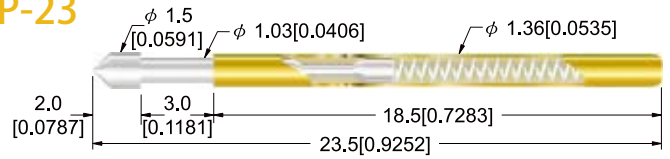


Dimensions In Millimeter (inch)

### P-21



### P-23



#### Plunger

Beryllium Copper or SK4 with Rhodium Plated or Gold Plated

#### Barrel

Phosphor Bronze or Brass with Gold Plated

#### Spring

Stainless Steel

#### Receptacle

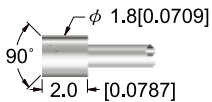
Phosphor Bronze or Brass with Gold Plated

#### Specification

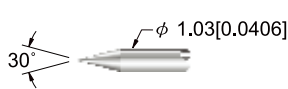
Min. Center	2.54mm (0.0100)
Full Stroke	21# 4.2mm (0.1654) / 23# 3.0mm (0.1181)
Full Stroke Spring Force (±20%)	150g (5.29oz)
2/3 Stroke Spring Force (±20%)	115g (4.06oz)
Current Rating	3A
Contact Resistance	30mΩ
Recommended Hole Size	1.70mm (0.0669)~1.75mm (0.0689)

\*Specification Subject to change without notice

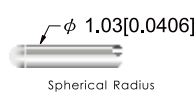
#### P-21A1



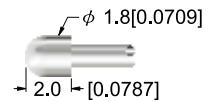
#### P-21B



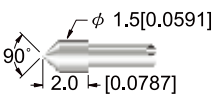
#### P-21D



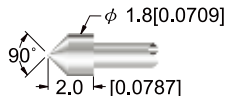
#### P-21D2



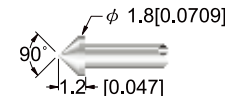
#### P-21E1



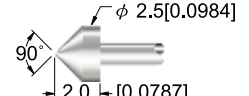
#### P-21E2



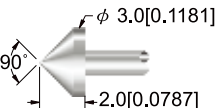
#### P-21E2(S)



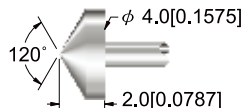
#### P-21E4



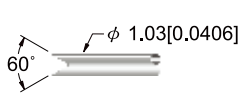
#### P-21E5



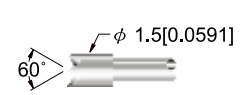
#### P-21E6



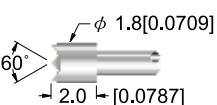
#### P-21F



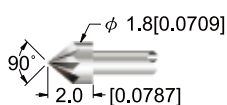
#### P-21F1



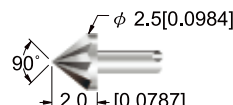
#### P-21H



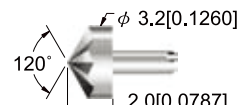
#### P-21K2



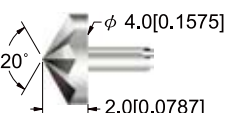
#### P-21K4



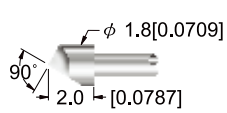
#### P-21K5



#### P-21K6



#### P-21T1

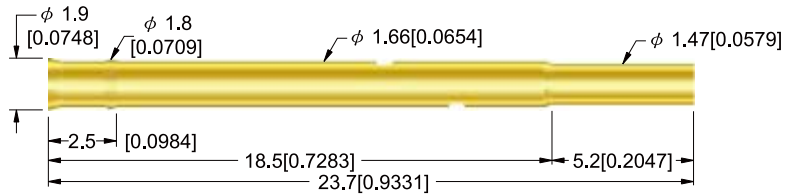


# R-2

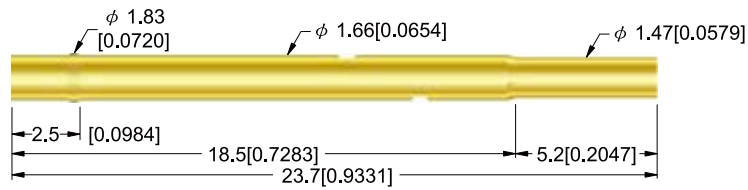
## RECEPTACLES SERIES

Dimensions In Millimeter (inch)

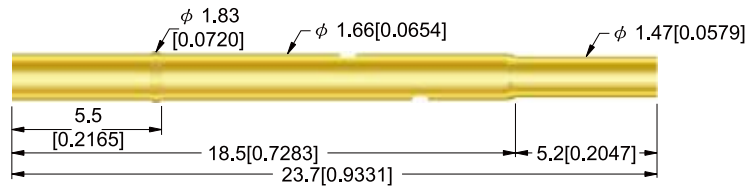
### R-2VC



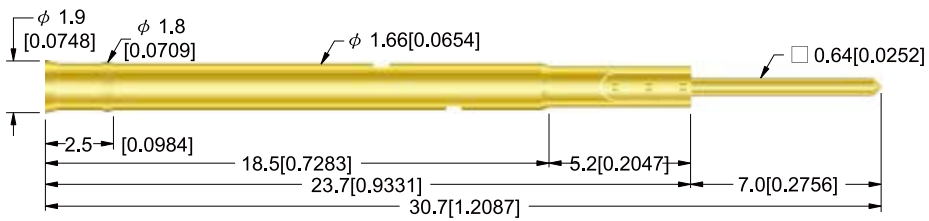
### R-2W1C



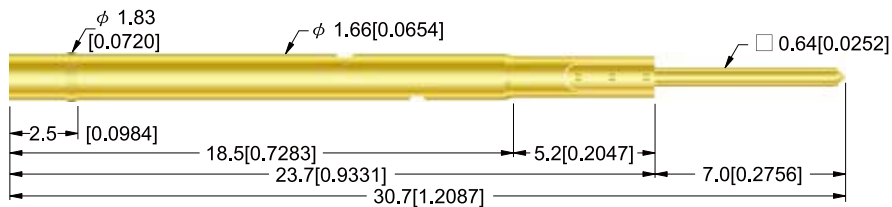
### R-2W2C



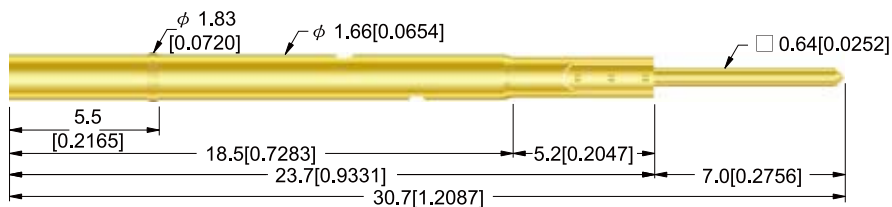
### R-2V-2



### R-2W1-2



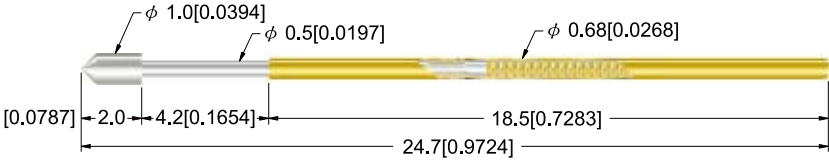
### R-2W2-2



Receptacle with Terminal Wire

Wire Length: 700mm

Dimensions In Millimeter (inch)



**Plunger**  
Beryllium Copper or SK4  
with Rhodium Plated

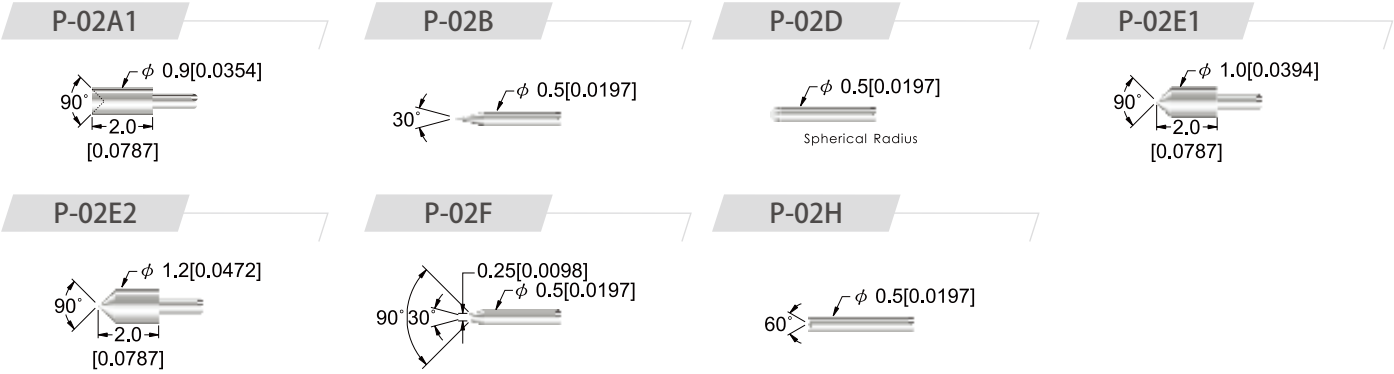
**Barrel**  
Phosphor Bronze with Gold Plated

**Spring**  
Music Wire with Gold Plated

**Receptacle**  
Phosphor Bronze or Brass  
with Gold Plated

Specification	
Min. Center	1.27mm (0.0500)
Full Stroke	4.20mm (0.1654)
Full Stroke Spring Force ( $\pm 20\%$ )	150g (5.29oz)
2/3 Stroke Spring Force ( $\pm 20\%$ )	100g (3.53oz)
Current Rating	3A
Contact Resistance	30m $\Omega$
Recommended Hole Size	0.95mm (0.0374)

\*Specification Subject to change without notice

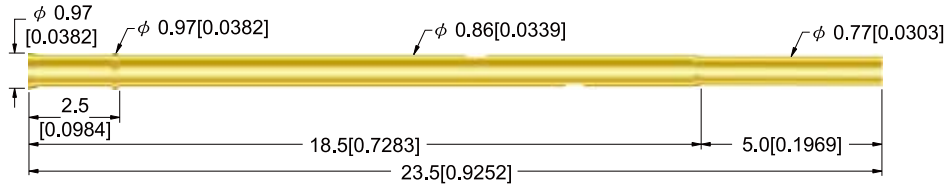


# R-02

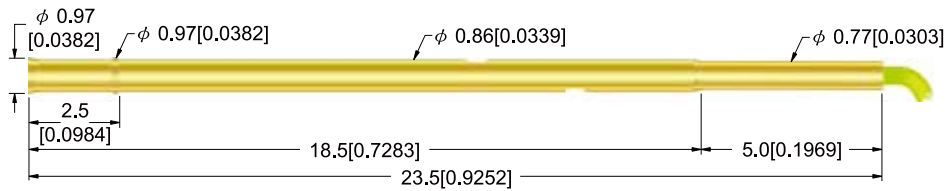
## RECEPTACLES SERIES

Dimensions In Millimeter (inch)

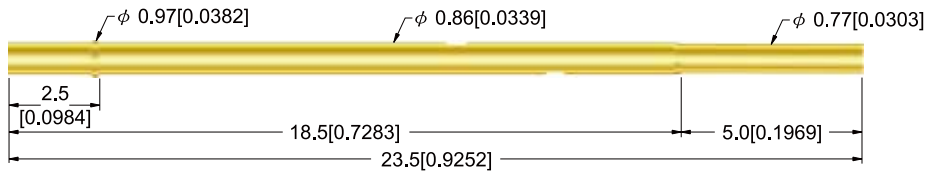
R-02VC



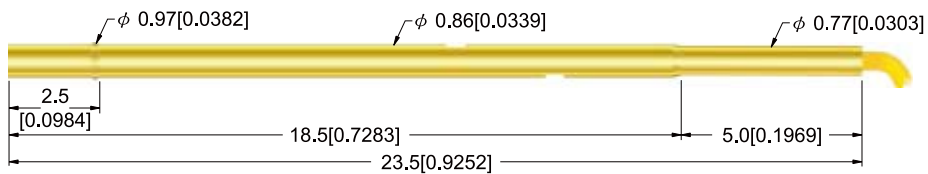
R-02V(W)



R-02WC



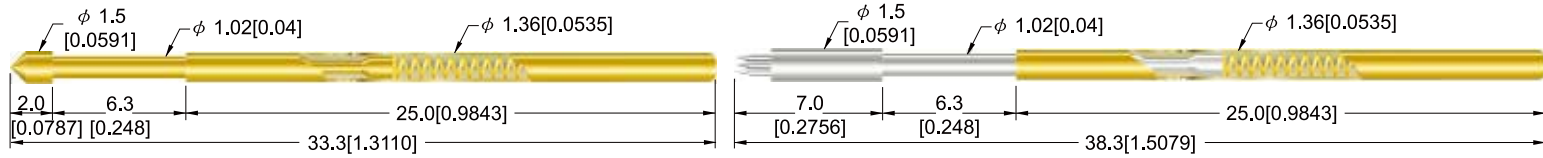
R-02W(W)



Receptacle with Terminal Wire

Wire Length: 700mm

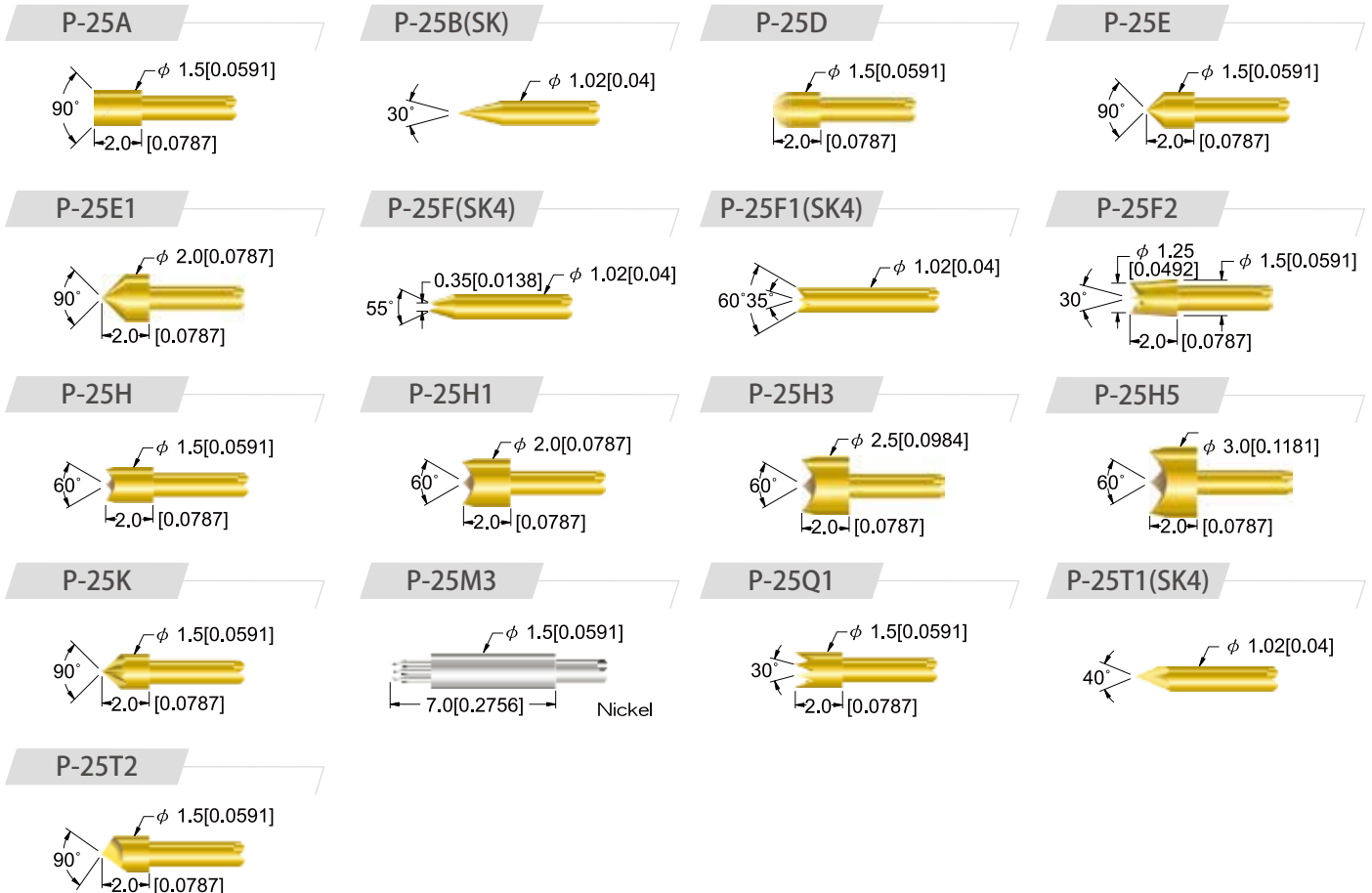
Dimensions In Millimeter (inch)



- Plunger**  
Beryllium Copper or SK4  
with Gold Plated or Nickel Plated
- Barrel**  
Phosphor Bronze with Gold Plated
- Spring**  
Music Wire with Gold Plated
- Receptacle**  
Phosphor Bronze with Gold Plated

Specification	
Min. Center	2.54mm (0.0100)
Full Stroke	6.30mm (0.2480)
Full Stroke Spring Force (±20%)	350g (12.34oz)
2/3 Stroke Spring Force (±20%)	230g (8.11oz)
Current Rating	3A
Contact Resistance	75mΩ
Recommended Hole Size	1.70mm (0.0669)~1.75mm (0.0689)

\*Specification Subject to change without notice



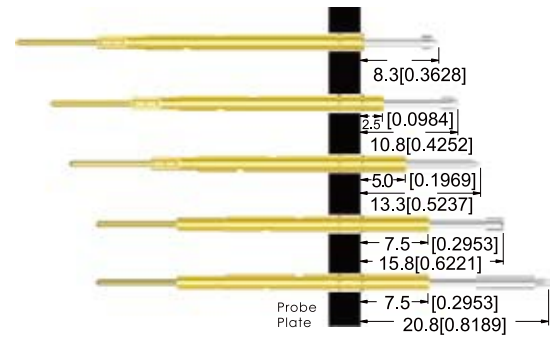
# R-25

## RECEPTACLES SERIES

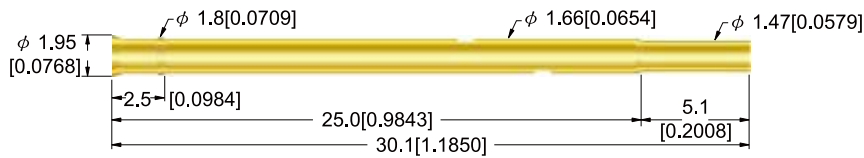
Dimensions In Millimeter (inch)

The picture on the right side show four different heights after receptacles are pressed. For loaded board, to cope with different component leads' heights, you can select different receptacles to adjust the height to have a fine contact during the test.

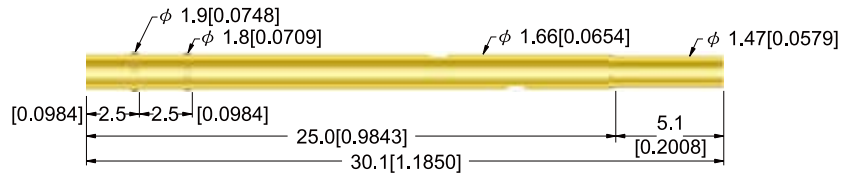
\*Specification Subject to change without notice



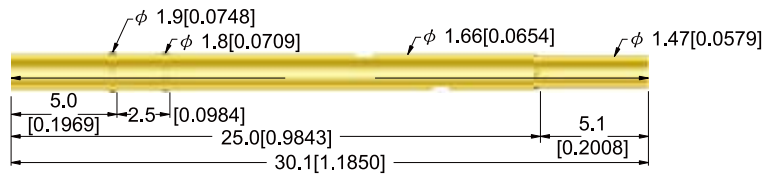
### R-25W1C



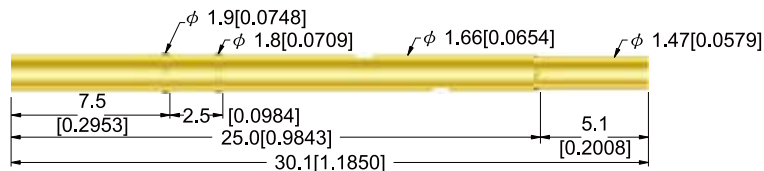
### R-25W2C



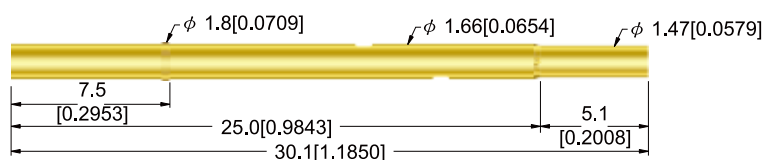
### R-25W3C



### R-25W4C

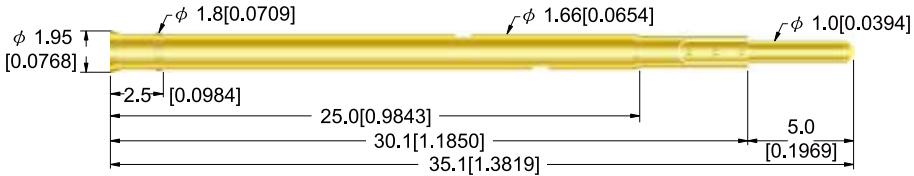


### R-25W5C

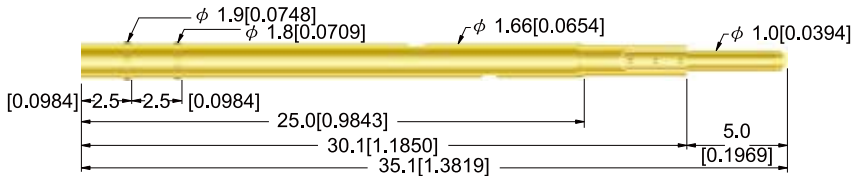


Dimensions In Millimeter (inch)

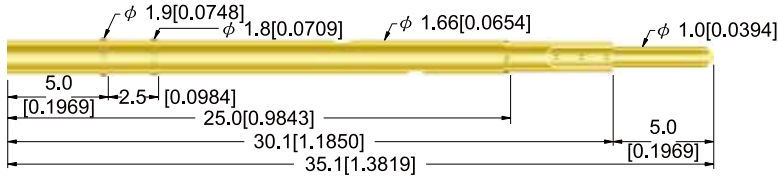
### R-25W1T



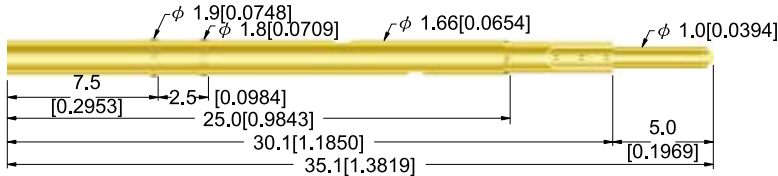
### R-25W2T



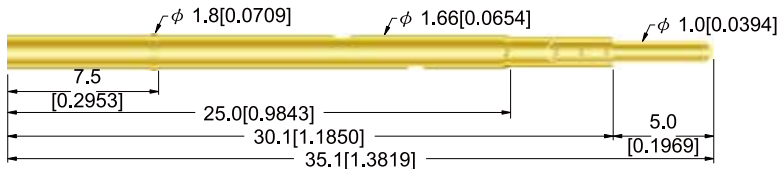
### R-25W3T



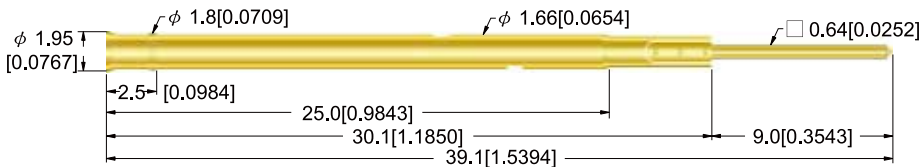
### R-25W4T



### R-25W5T



### R-25W1W

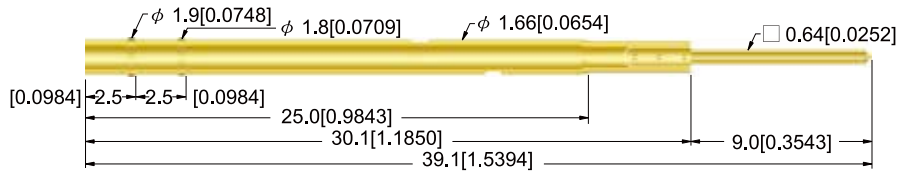


# R-25

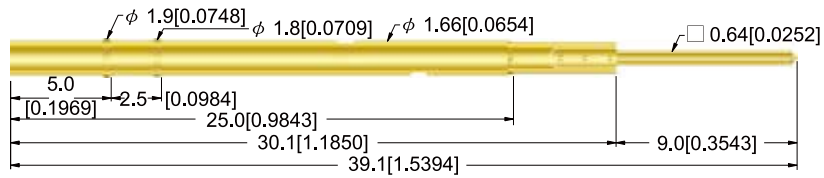
## RECEPTACLES SERIES

Dimensions In Millimeter (inch)

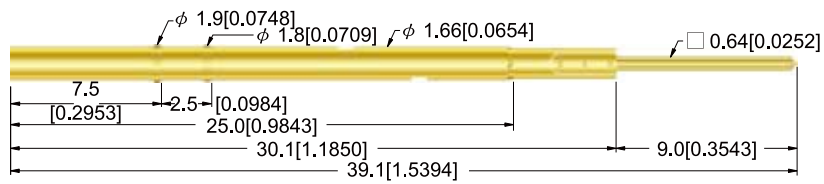
### R-25W2W



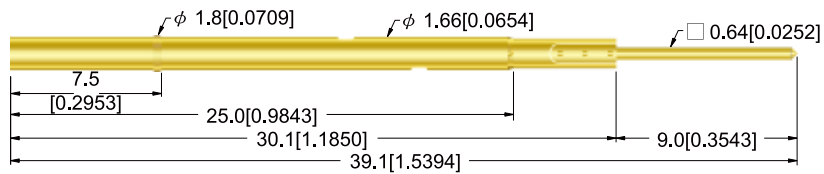
### R-25W3W



### R-25W4W

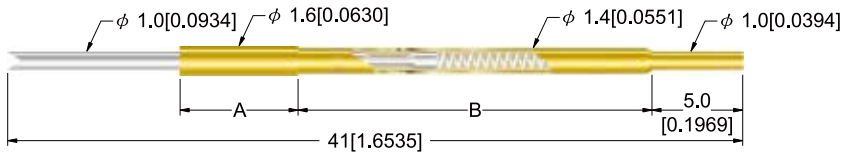


### R-25W5W





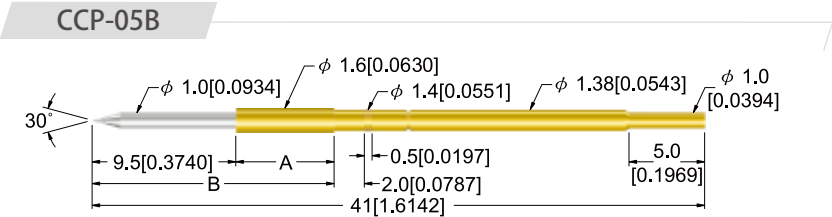
Dimensions In Millimeter (inch)



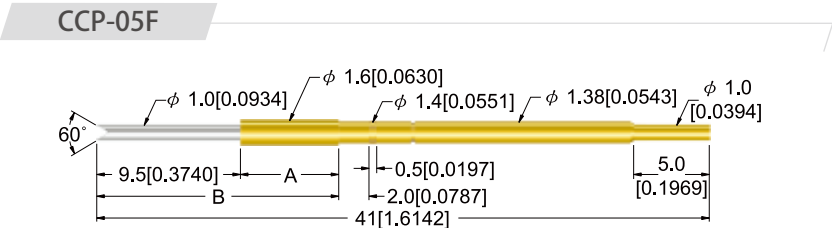
- Plunger**  
High Carbon Steel with Nickel Plated
- Barrel**  
Phosphor Bronze with Gold Plated
- Spring**  
Stainless Steel

Specification	
Min. Center	2.0mm (0.0787)
Full Stroke	6~7mm (0.2362~0.2756)
Full Stroke Spring Force (±20%)	170g (6.00oz)
2/3 Stroke Spring Force (±20%)	110g (3.88oz)
Way of Inserting	Press
Recommended Hole Size	1.40mm (0.0551)

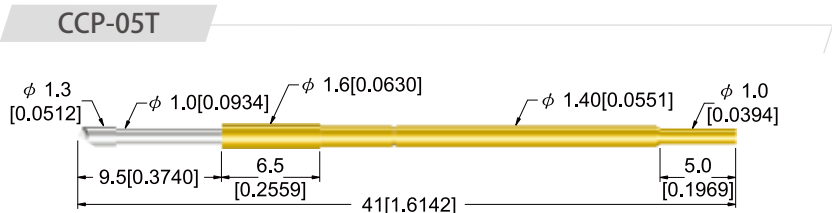
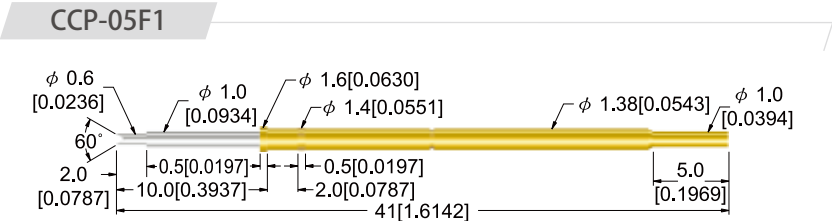
\*Specification Subject to change without notice



MODEL	A	B
CCP-05B (10)	0.5 (0.0197)	26 (1.0236)
CCP-05B (16)	6.5 (0.2559)	20 (0.7874)



MODEL	A	B
CCP-05F (10)	0.5 (0.0197)	26 (1.0236)
CCP-05F (16)	6.5 (0.2559)	20 (0.7874)

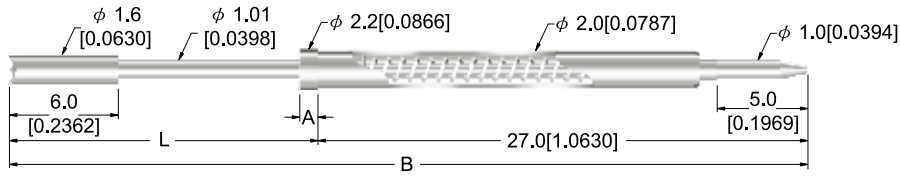


MODEL	A	B
CCP-05T (10)	0.5 (0.0197)	26 (1.0236)
CCP-05T (16)	6.5 (0.2559)	20 (0.7874)

# CCP-10

## CCP SERIES

Dimensions In Millimeter (inch)



### Plunger

High Carbon Steel with Nickel Plated

### Barrel

Brass with Nickel Plated

### Spring

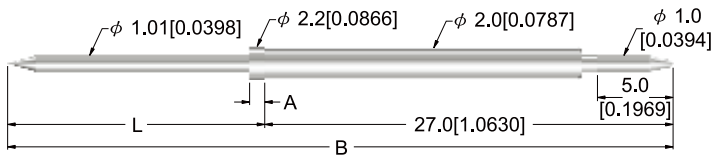
Stainless Steel

### Specification

Min. Center	2.5 mm (0.0984)
Full Stroke	6~7mm (0.2362~0.2756)
Full Stroke Spring Force (±20%)	270g (9.52oz)
2/3 Stroke Spring Force (±20%)	180g (6.35oz)
Way of Inserting	Press
Recommended Hole Size	2.0mm (0.0787)

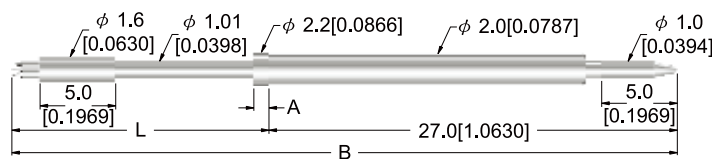
\*Specification Subject to change without notice

### CCP-10B(L)



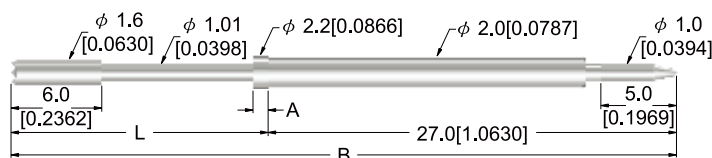
MODEL	A	B	L
CCP-10B (16)	1 (0.0394)	4.3 (1.6929)	16 (0.6299)
CCP-10B (23)	4 (0.1575)	50 (1.9685)	23 (0.9055)

### CCP-10M3(L)



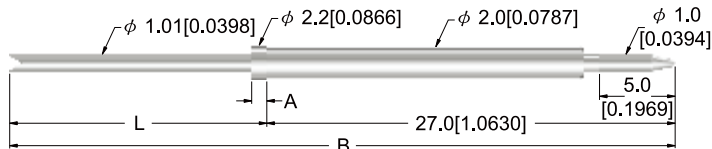
MODEL	A	B	L
CCP-10M3 (16)	1 (0.0394)	43 (1.6929)	16 (0.6299)
CCP-10M3 (23)	4 (0.1575)	50 (1.9685)	23 (0.9055)

### CCP-10H(L)



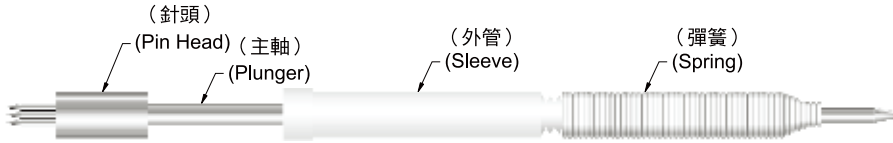
MODEL	A	B	L
CCP-10H (16)	1 (0.0394)	43 (1.6929)	16 (0.6299)
CCP-10H (23)	4 (0.1575)	50 (1.9685)	23 (0.9055)

### CCP-10F(L)



MODEL	A	B	L
CCP-10F (16)	1 (0.0394)	43 (1.6929)	16 (0.6299)
CCP-10F (23)	4 (0.1575)	50 (1.9685)	23 (0.9055)

Dimensions In Millimeter (inch)



**Plunger**  
High Carbon Steel with Nickel Plated

**Barrel**  
Antiwear Resin

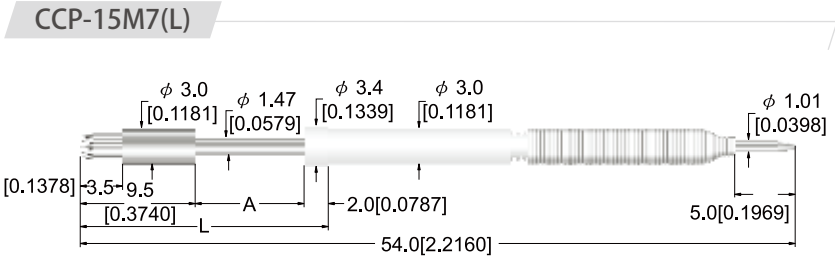
**Spring**  
Stainless Steel

**Sleeve**  
Antiwear Resin Sleeve

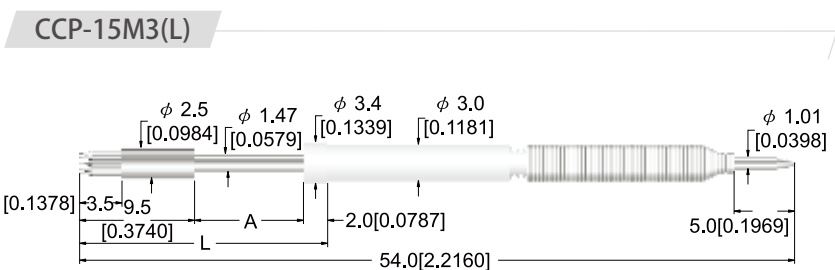
Specification	
Min. Center	3.5mm (0.1378)
Full Stroke	6~7mm (0.2362-0.2756)
Full Stroke Spring Force (±20%)	270g (9.52oz)
2/3 Stroke Spring Force (±20%)	180g (6.35oz)
Way of Inserting	Press

Recommended Hole Size 3.0mm (0.1181)

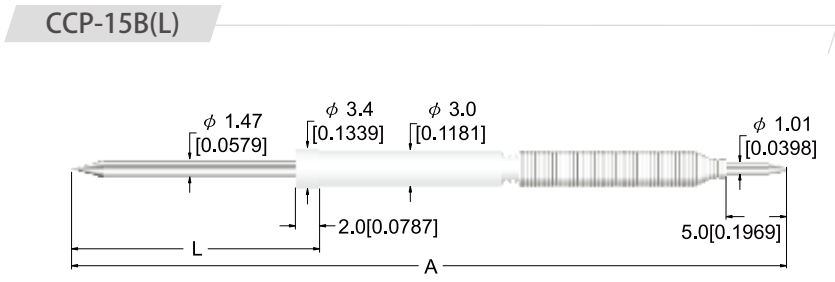
\*Specification Subject to change without notice



MODEL	L	A
CCP-15M7 (20)	20 (0.7874)	85 (0.3345)
CCP-15M7 (23)	23 (0.9055)	11.5 (0.4528)



MODEL	L	A
CCP-15M3 (20)	20 (0.7874)	85 (0.3345)
CCP-15M3 (23)	23 (0.9055)	11.5 (0.4528)



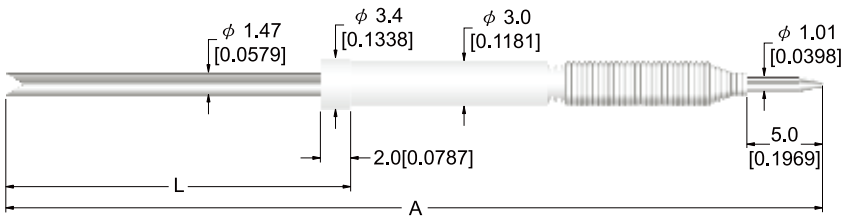
MODEL	L	A
CCP-15B (16)	16 (0.5300)	50 (1.9685)
CCP-15B (20)	20 (0.7874)	54 (2.1260)
CCP-15B (23)	23 (0.9055)	54 (2.1260)

# CCP-15

## CCP SERIES

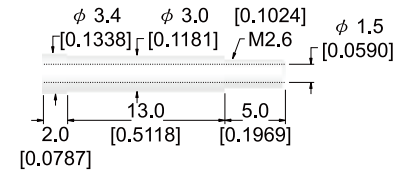
Dimensions In Millimeter (inch)

### CCP-15F(L)



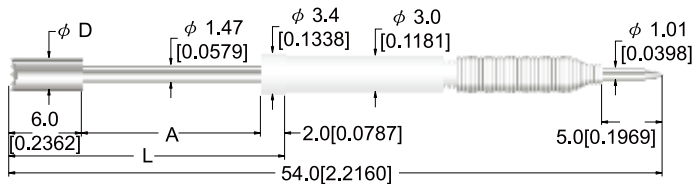
MODEL	L	A	Min. Center
CCP-15F (16)	16 (0.6300)	50 (1.9635)	3.5mm (0.1378)
CCP-15F (20)	20 (0.7874)	54 (2.1260)	3.5mm (0.1378)
CCP-15F (23)	12 (0.9055)	54 (2.1260)	3.5mm (0.1378)

### Sleeve



Material	Heat-Proof Temperature
Antiwear Resin	100° C

### CCP-15H(∅D)(L)



MODEL	L	A	D	Min. Center
CCP-15H (∅2.6)(20)	20 (0.7874)	12 (0.4724)	2.6 (0.1024)	3.5mm (0.1378)
CCP-15H (∅2.6)(23)	23 (0.9055)	15 (0.5906)	2.6 (0.1024)	3.5mm (0.1378)
CCP-15H (∅3.2)(20)	20 (0.7874)	12 (0.4724)	3.2 (0.1260)	3.5mm (0.1378)
CCP-15H (∅3.2)(23)	23 (0.9055)	15 (0.5906)	3.2 (0.1260)	3.5mm (0.1378)
CCP-15H (∅4.0)(20)	20 (0.7874)	12 (0.4724)	4.0 (0.1575)	4.5mm (0.1772)
CCP-15H (∅4.0)(23)	23 (0.9055)	15 (0.5906)	4.0 (0.1575)	4.5mm (0.1772)

### Spring



MODEL	D	L	Diameter
∅0.35*14	2.9 (0.1142)	14 (0.5512)	0.35mm (0.138)
∅0.35*12	2.9 (0.1142)	12 (0.4724)	0.35mm (0.138)
Material	Stainless Steel		
Application	CCP-15□(16) CCP-15□(20) CCP-15□(23)		

Dimensions In Millimeter (inch)

### Plunger

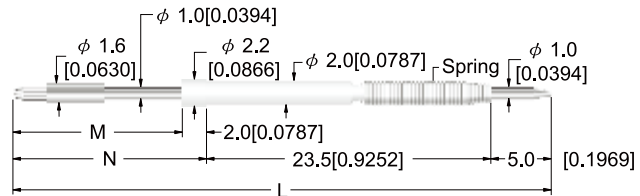
High Carbon Steel with Nickel Plated

### Barrel

Antiwear Resin

### Spring

Stainless Steel

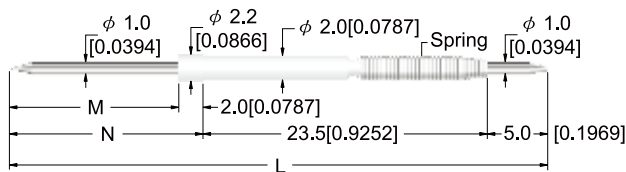


\*Specification Subject to change without notice

### Recommended Stroke

6.0mm(0.2362)

#### CCP-101B



Dimension  
Item No.

M

N

L

CCP-101B(16)

14

16

44.5

(0.5512)

(0.630)

(1.7520)

CCP-101B(22)

20

22

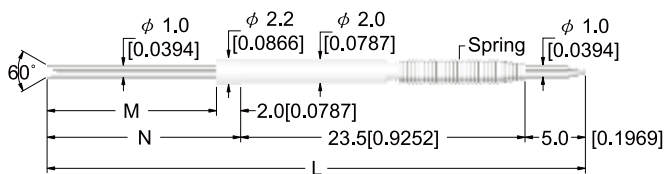
50.5

(0.7874)

(0.8661)

(1.9882)

#### CCP-101F



Dimension  
Item No.

M

N

L

CCP-101F(16)

14

16

44.5

(0.5512)

(0.630)

(1.7520)

CCP-101F(22)

20

22

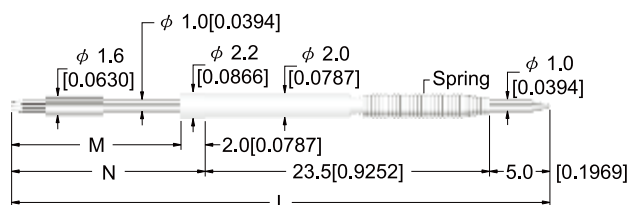
50.5

(0.7874)

(0.8661)

(1.9882)

#### CCP-101M3



Dimension  
Item No.

M

N

L

CCP-101M3(16)

14

16

44.5

(0.5512)

(0.630)

(1.7520)

CCP-101M3(22)

20

22

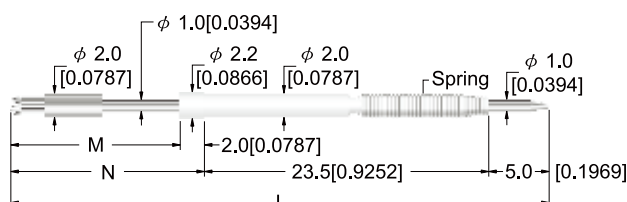
50.5

(0.7874)

(0.8661)

(1.9882)

#### CCP-101M7



Dimension  
Item No.

M

N

L

CCP-101M7(16)

14

16

44.5

(0.5512)

(0.630)

(1.7520)

CCP-101M7(22)

20

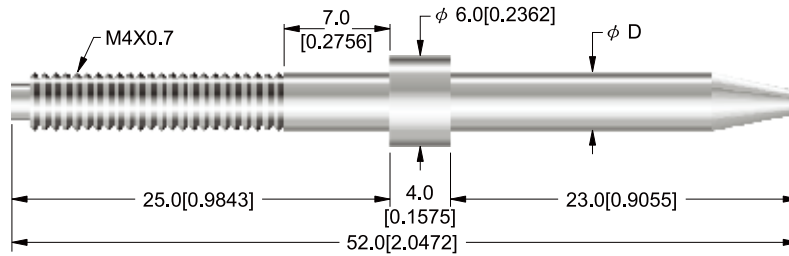
22

50.5

(0.7874)

(0.8661)

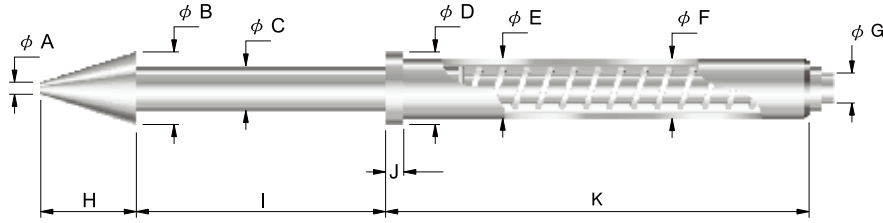
(1.9882)



### Guide Pin (For Loaded Board) Copper

Model	∅D	Model	∅D
GL - 1S	∅ 1.95(0.0768)	GL - 9S	∅ 4.45(0.1752)
GL - 2S	∅ 2.45(0.0965)	GL - 10S	∅ 4.95(0.1949)
GL - 3S	∅ 2.95(0.1161)	GL - 11S	∅ 5.95(0.2343)
GL - 4S	∅ 3.15(0.1240)	GL - 12S	∅ 3.25(0.1280)
GL - 5S	∅ 3.45(0.1358)	GL - 13S	∅ 3.35(0.1319)
GL - 6S	∅ 3.75(0.1476)	GL - 14S	∅ 2.35(0.0925)
GL - 7S	∅ 3.85(0.1516)	GL - 15S	∅ 2.75(0.1083)
GL - 8S	∅ 3.95(0.1555)	GL - 16S	∅ 2.85(0.1122)

Dimensions In Millimeter (inch)



Specification		
Full Stroke Spring Force (±20%)	300g (10.58oz)	350g (12.34oz)
2/3 Stroke Spring Force (±20%)	200g (7.05oz)	290g (10.23oz)
Recommended Hole Size	5.00mm (0.1969)	5.00mm (0.1969)
Suitable For	CCP-15M3-23L	CCP-10-16L / CCP-101-16L / P-25 / P-111

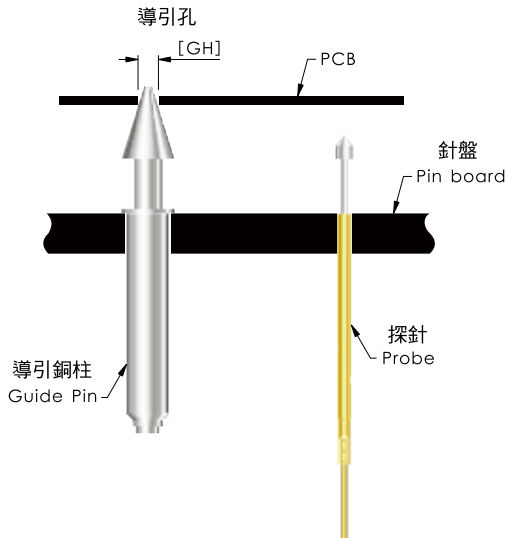
\*Specification Subject to change without notice

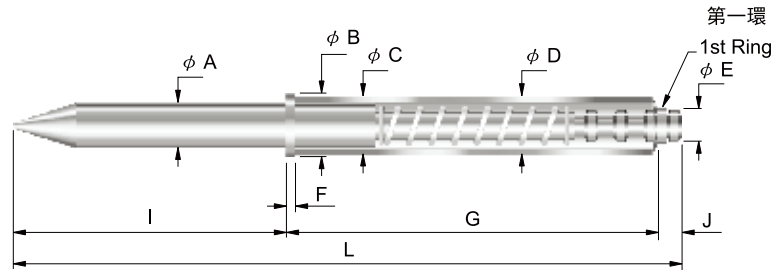
**Guide Pin (For Loaded Board)**

Spec Type	ϕA	ϕB	ϕC	ϕD	ϕE	ϕF	ϕG
I1-6.0	1.00(0.0394)	6.00(0.2362)	3.67(0.1445)	6.00(0.2362)	5.00(0.1969)	4.95(0.1949)	2.48(0.0976)
GP-2J	1.00(0.0394)	6.50(0.2559)	3.68(0.1449)	6.00(0.2362)	5.00(0.1969)	4.95(0.1949)	2.53(0.0996)

Spec Type	H	I	J	K	O. D. P CB (GH)
I1-6.0	7.90(0.3110)	20.60(0.8110)	1.50(0.0591)	35.00(1.3780)	1.0/1.05mm (0.0394)/(0.0413)
GP-2J	7.80(0.3071)	13.80(0.5433)	1.00(0.0394)	25.00(0.9843)	1.30/1.35mm (0.0512)/(0.0531)





Specification	GP-1P	GP-2P	GP-3P	GP-5P
Full Stroke Spring Force (±20%)	150g (5.29oz)	170g (6.00oz)	300g (10.58oz)	300g (10.58oz)
2/3 Stroke Spring Force (±20%)	100g (3.53oz)	120g (4.23oz)	220g (7.76oz)	230g (8.11oz)
Recommended Hole Size	3.20mm (0.1260)	5.00mm (0.1969)	6.00mm (0.2362)	4.50mm (0.1772)
Suitable For	P-048/ P-1/ P-0 P-058/ P-23	P-21/ P-11/ P-2	P-048/ P-1/ P-0 P-058/ P-23	P-21/ P-11/ P-2

\*Specification Subject to change without notice

### Guide Pin (For Bare Board)

Spec Type	∅A	∅B	∅C	∅D	∅E	F	G	L	O. D. P CB (GH)
GP-1P	2.48 (0.0976)	3.50 (0.1378)	3.20 (0.1260)	3.15 (0.1240)	1.83 (0.0720)	0.50 (0.0197)	20.00 (0.7874)	32.80 (1.2913)	1.0/ 1.5mm (0.0394)/(0.0591)
GP-2P	3.98 (0.1567)	5.50 (0.2165)	5.00 (0.1969)	4.95 (0.1949)	2.53 (0.0996)	0.50 (0.0197)	25.00 (0.9843)	38.60 (1.5197)	1.0/ 3.0mm (0.0394)/(0.1181)
GP-3P	4.98 (0.1967)	7.00 (0.2756)	6.00 (0.2362)	5.95 (0.2343)	2.53 (0.0996)	0.50 (0.0197)	25.00 (0.9843)	38.50 (1.5157)	1.0/ 3.7mm (0.0394)/(0.1457)
GP-5P	3.48 (0.1370)	5.00 (0.1969)	4.50 (0.1772)	4.45 (0.1752)	2.53 (0.0996)	0.50 (0.0197)	25.00 (0.9843)	39.40 (1.5512)	1.0/ 3.0mm (0.0394)/(0.1181)

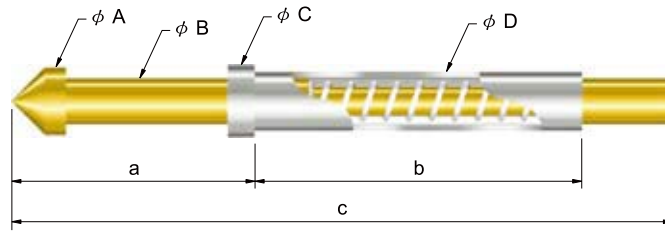
I	1st Ring				J	1st Ring			
	1st	2nd	3rd	4th		1st	2nd	3rd	4th
GP-1P	11.60 (0.4567)	10.40 (0.4094)	9.20 (0.3622)	8.00 (0.3150)	GP-1P	1.20 (0.0472)	2.40 (0.0945)	3.60 (0.1417)	4.80 (0.1890)
GP-2P	12.15 (0.4783)	9.70 (0.3819)	7.25 (0.2854)	4.80 (0.1890)	GP-2P	1.45 (0.0571)	3.90 (0.1535)	3.65 (0.2500)	8.80 (0.3465)
GP-3P	12.25 (0.4823)	9.80 (0.2756)	7.35 (0.2894)		GP-3P	1.25 (0.0492)	3.70 (0.1457)	6.15 (0.2421)	
GP-5P	12.95 (0.5098)	11.00 (0.4331)	9.05 (0.3563)	7.10 (0.2795)	GP-5P	1.45 (0.0571)	3.40 (0.1339)	5.35 (0.2106)	7.30 (0.2874)



# CSP-1~CSP-5

## CSP SERIES

Dimensions In Millimeter (inch)



	CSP-1	CSP-2	CSP-3	CSP-4	CSP-5
Full Stroke Spring Force ( $\pm 20\%$ )	100g (3.53oz)	100g (3.53oz)	150g (5.29oz)	150g (5.29oz)	200g (7.05oz)
2/3 Stroke Spring Force ( $\pm 20\%$ )	70g (2.47oz)	70g (2.47oz)	100g (3.53oz)	100g (3.53oz)	140g (4.94oz)
Recommended Hole Size	1.00mm(0.0394) 1.05mm(0.0413)	1.30mm(0.0512) 1.35mm(0.0531)	1.80mm(0.0709) 1.85mm(0.0728)	2.30mm(0.0906) 2.35mm(0.0925)	3.20mm(0.1260) 3.25mm(0.1280)
Probe Materials	Becu	Becu	Becu	Becu	Brass
Connections	Solder	Solder	Solder	Solder or Crimp 1.0mm Terminal Wire	Solder or Crimp 1.5mm Terminal Wire

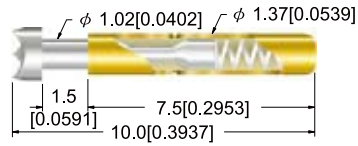
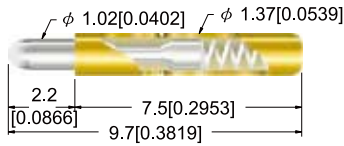
\*Specification Subject to change without notice

Spec Type	$\varnothing A$	$\varnothing B$	$\varnothing C$	$\varnothing D$	a	b	c	Stroke	Min. Center
CSP-1	1.30 (0.0512)	0.75 (0.0295)	1.20 (0.0472)	0.98 (0.0386)	7 (0.2756)	9.50 (0.3740)	20.50 (0.8071)	4.50mm (0.1772)	1.70mm (0.0669)
CSP-2	1.50 (0.0591)	0.95 (0.0374)	1.50 (0.0591)	1.34 (0.0528)	10 (0.3937)	13.00 (0.5118)	27.00 (1.0630)	6.00mm (0.2362)	2.00mm (0.0787)
CSP-3	2.00 (0.0787)	1.29 (0.0508)	2.00 (0.0787)	1.83 (0.0720)	16 (0.6299)	16.00 (0.6299)	36.00 (1.4173)	12.00mm (0.4724)	2.50mm (0.0984)
CSP-4	2.50 (0.0984)	1.80 (0.0709)	2.50 (0.0984)	2.33 (0.0917)	16 (0.6299)	18.00 (0.7087)	38.00 (1.4961)	10.50mm (0.4134)	3.00mm (0.1181)
CSP-5	3.50 (0.1378)	2.50 (0.0984)	3.50 (0.1378)	3.23 (0.1272)	16 (0.6299)	18.00 (0.7087)	38.00 (1.4961)	10.00mm (0.3937)	4.20mm (0.1654)

# CSP-6

## CSP SERIES

Dimensions In Millimeter (inch)

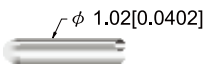


- Plunger**  
Beryllium Copper  
with Rhodium Plated or Gold Plated
- Barrel**  
Brass with Gold Plated
- Spring**  
Stainless Steel
- Sleeve**  
Brass with Gold Plated

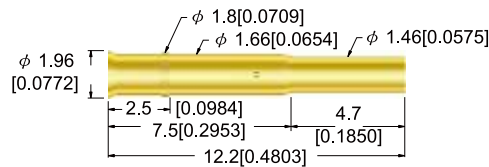
Specification	
Min. Center	2.54mm (0.10000)
Full Stroke	1.50mm (0.0591)
Full Stroke Spring Force (±20%)	110g (3.88oz)
2/3 Stroke Spring Force (±20%)	80g (2.82oz)
Current Rating	3A
Contact Resistance	30 mΩ
Recommended Hole Size	1.70mm(0.0669)~1.75mm(0.0689)

\*Specification Subject to change without notice

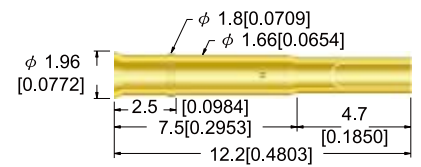
CSP-6D



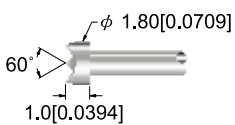
CSR-6V



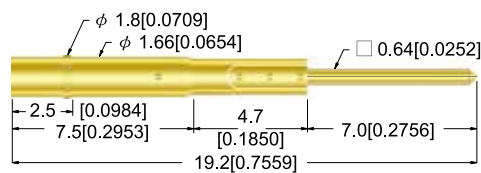
CSR-6VS



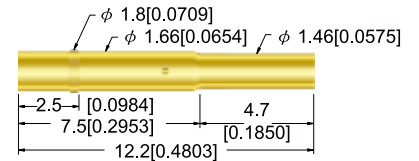
CSP-6H



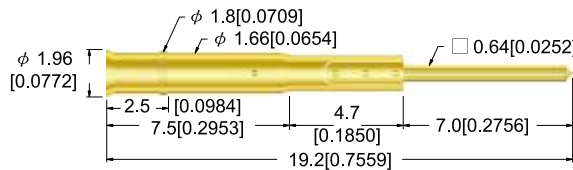
CSR-6V-2



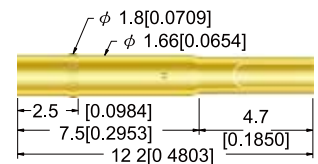
CSR-6WC



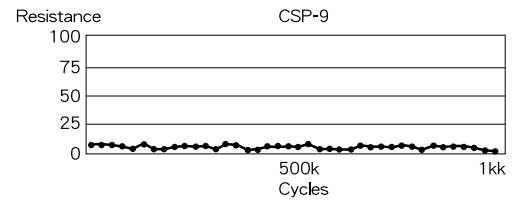
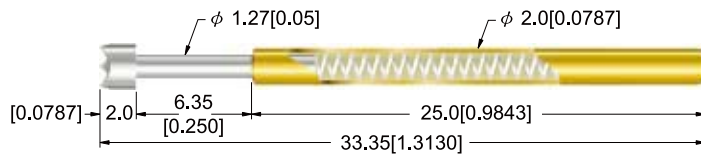
CSR-6W-2



CSR-6WS



Dimensions In Millimeter (inch)



### Plunger

Beryllium Copper  
with Rhodium Plated or Gold Plated

### Barrel

Brass with Gold Plated

### Spring

Stainless Steel

### Sleeve

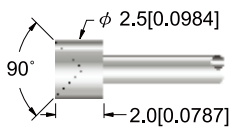
Brass with Gold Plated

### Specification

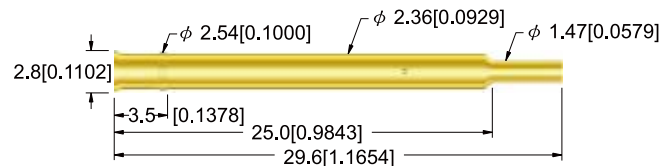
Min. Center	3.17mm (0.1248)
Full Stroke	6.35mm (0.2500)
Full Stroke Spring Force (±20%)	150g (5.29oz)
2/3 Stroke Spring Force (±20%)	100g (3.53oz)
Current Rating	5A
Contact Resistance	30 mΩ
Recommended Hole Size	2.40mm(0.0945)~2.45mm(0.0965)

\*Specification Subject to change without notice

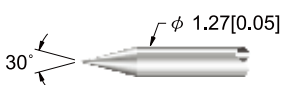
### CSP-9A



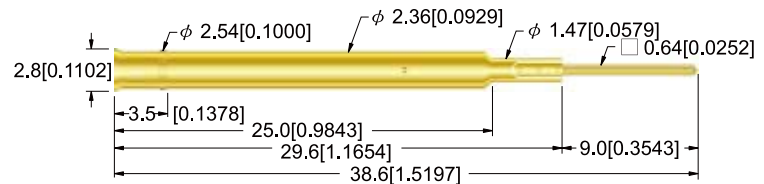
### CSR-9V-C



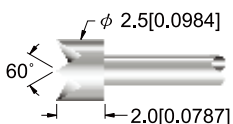
### CSP-9B



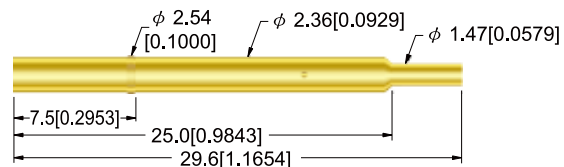
### CSR-9V-1



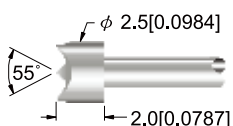
### CSP-9F



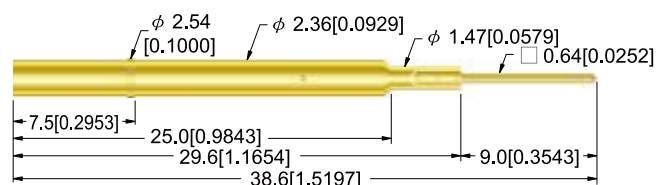
### CSR-9WC



### CSP-9H



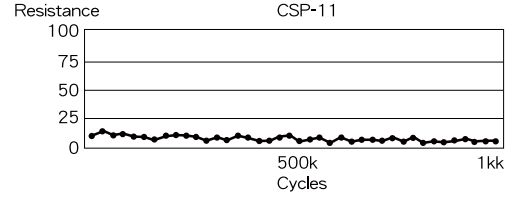
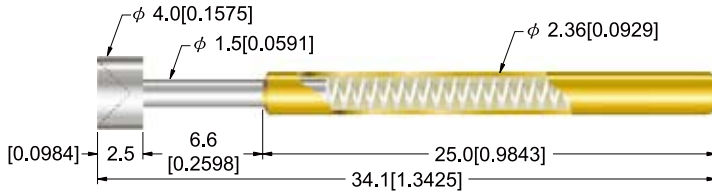
### CSR-9W-1



# CSP-11

## CSP SERIES

Dimensions In Millimeter (inch)



**Plunger**  
Beryllium Copper  
with Rhodium Plated or Gold Plated

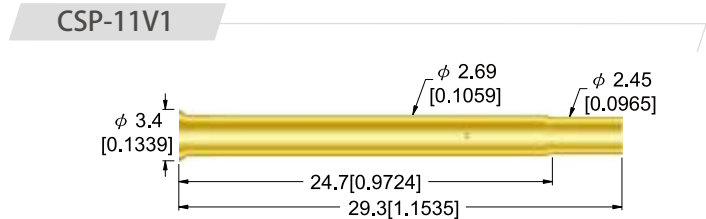
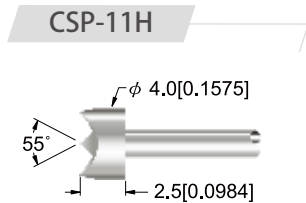
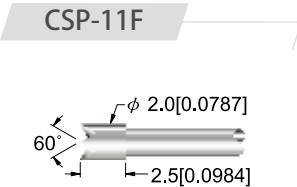
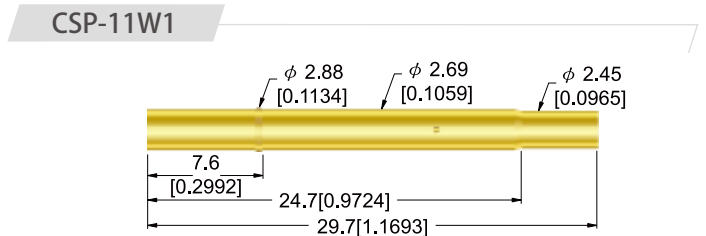
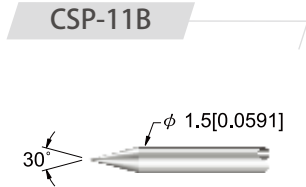
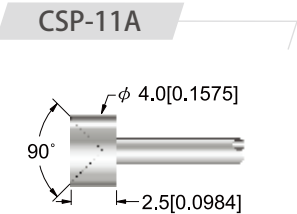
**Barrel**  
Brass with Gold Plated

**Spring**  
Stainless Steel

**Sleeve**  
Brass with Gold Plated

Specification	
Min. Center	3.97mm (0.1563)
Full Stroke	6.60mm (0.2598)
Full Stroke Spring Force ( $\pm 20\%$ )	150g (5.29oz)
2/3 Stroke Spring Force ( $\pm 20\%$ )	100g (3.53oz)
Current Rating	5A
Contact Resistance	30 m $\Omega$
Recommended Hole Size	2.70mm(0.1063)~2.75mm(0.1083)

\*Specification Subject to change without notice



# COAXIAL PROBE

Dimensions In Millimeter (inch)



單位 Unit : A(mm), B(mm)

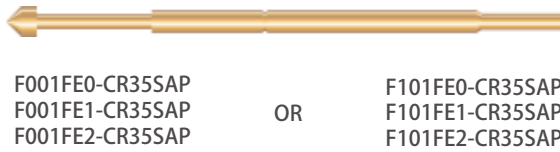


單位 Unit : A(mm), B(mm)

## Signal: H Style



## Signal: E Style



Signal Spec		Length Spec
Spec	Dimension A	Dimension B
H0	∅0.9mm	35cm
E0	∅0.9mm	
E1	∅1.6mm	60cm
E2	∅1.2mm	

( FXXXXXX-CR60SAP )

Electrical Characteristics	
Ground Current Rating	3A
Signal Current Rating	3A
Impedance	50 ± 10Ω
Band Width	-0.3db @ 3G Hz
Mechanical Characteristics	
Signal Full Stroke	2.65mm
Signal Spring Force @2/3 Travel	60 ± 20%

\*Specification Subject to change without notice

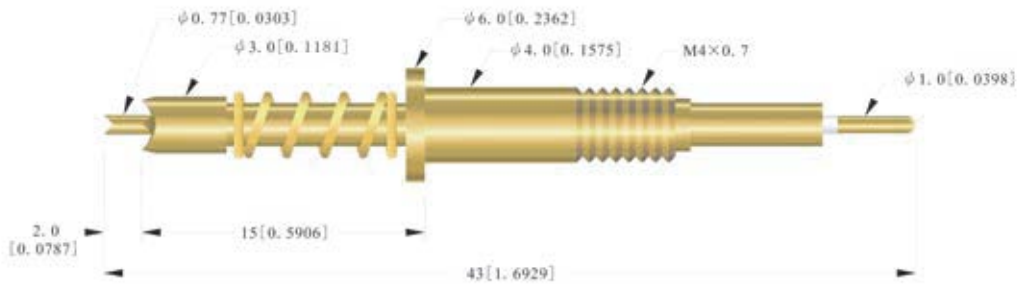
## Application

For the transmission of high volume, frequency, and wideband information transmission techniques applied in computer, optical fiber communication, satellite communication, mobile RF, radio broadcast and the testing technique of various sensor, remote sensors.

# HIGH CURRENT COAXIAL PROBE

Dimensions In Millimeter (inch)

CS90046M1



## Electrical Characteristics

Max Continuous Current Contact Sleeve	6A
Max Continuous Current ContactPlunger	3A
Hole Size	
Recommended Min Center	7mm (0.2756)
Mounting Hole Size	4mm (0.1575)

## Machanical Characteristics

Full Stroke	4.0mm (0.1575)
Outter Stroke	3.0mm (0.1180)
Central Stroke	2.0mm (0.0787)
Outter Spring	500g ± 20%
Central Spring	130g ± 20%

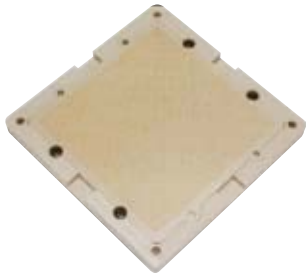
\*Specification Subject to change without notice

## Application

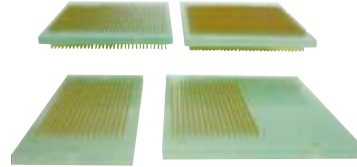
- Battery System Activated Element Test
- Battery Contact Test
- Capability Of Electric Current Signal Transmission Test

# PERIPHERALS OF FIXTURE

Dimensions In Millimeter (inch)



IC TEST SOCKET



WIRE WRAPPING POST SET



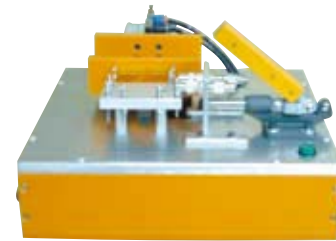
LCD TESTING FIXTURE



MOBILE PHONE TESTING FIXTURE



GPS TESTING FIXTURE



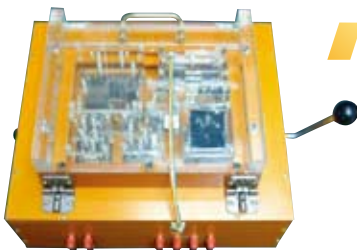
RF MODULE TESTING FIXTURE



RF IC MODULE TESTING FIXTURE



CONNECTOR TESTING FIXTURE



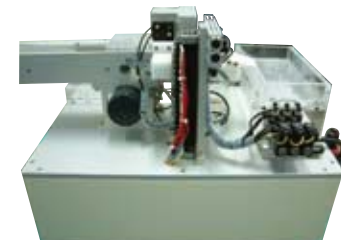
CAM TYPE TESTING FIXTURE



GEAR TYPE TESTING FIXTURE



AIR PRESSURE TYPE TESTING FIXTURE



LI BATTERY TESTING FIXTURE

# PERIPHERALS OF FIXTURE

Dimensions In Millimeter (inch)



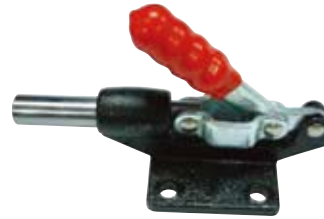
CCPC-34-SGT



CCPJ-C1  
Spec: 16m/m



CCPC-34-WNT



CCPJ-C2  
Spec: 30.2m/m



CCPC-64-SGT



CCPJ-C3  
Spec: 41.4m/m



CCPC-64-WNT



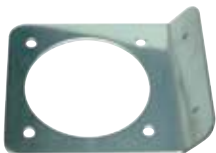
CCPJ-C4  
Spec: 60.4m/m



CCPE-HC



CCPJ-F1



CCPE-MS



CCPJ-P1



CCPG-21



CCPJ-P2



# PERIPHERALS OF FIXTURE

Dimensions In Millimeter (inch)



CCPJ-S1



CCPJ-S8



CCPJ-S2



CCPJ-L2



CCPJ-S3



CCPJ-L3



CCPJ-S4



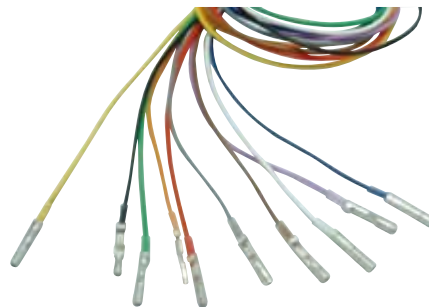
CCPT-3907



CCPJ-S5



CCPJ-S6



CCPW-J10



CCPJ-S7



CCPW-T1000

# VERIFICATION ABILITY

## Testing Items

### Environmental

- Waterproof
- Humidity Test
- Salt Spray
- Thermal Impact
- Resistance to Solder Heat
- Vibration

### Electrical

- Contact Resistance
- Insulation
- HIPOT
- Rated Current

### Mechanical

- Retention Force
- Life Cycle
- Vibration
- Mechanical Shock

### Other

- Drop
- Soldering Side Force
- Solderability

## Testing Equipment

### Rated Current

Max Rating: 1000Amp



### Waterproof Test Level

Test Level: IPx8 Up



### Thermal Impact

Range: -60~120°C  
Resolution: 0.01°C



### Vibration

Frequency: 3500 Hz Max  
Acceleration: 50G Max



**ISO 9001: 2015**  
Quality Management Systems

**ISO 13485: 2016**  
Medical devices - Quality management systems

**ISO 14001: 2015**  
Environmental Management Systems

**IATF 16949: 2016**  
Automotive Quality Management Systems

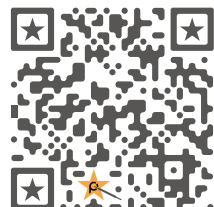
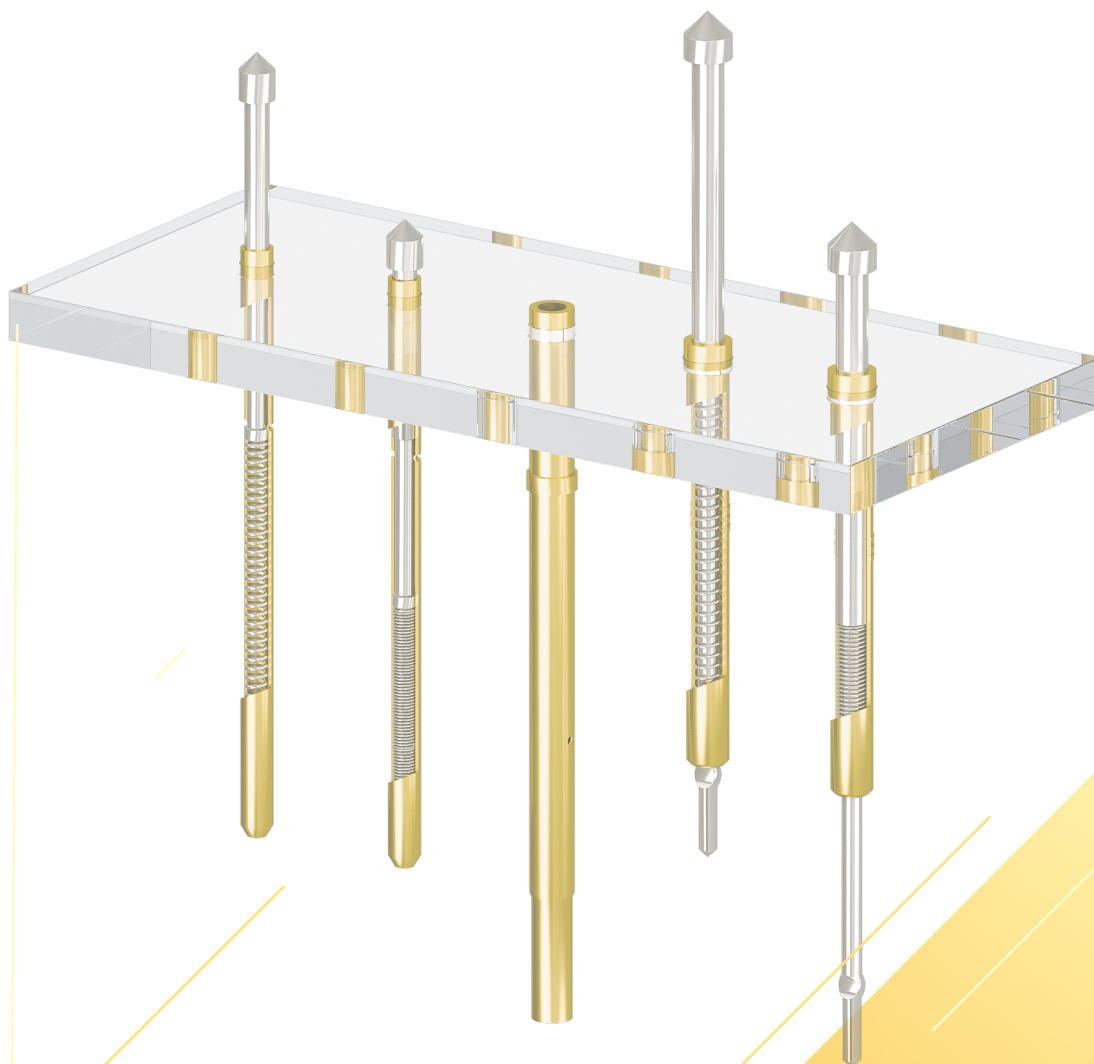
**QC 080000**  
Hazardous Substance Process Management

## Quality Assurance





C.C.P. CONTACT PROBES



**Dongguan**  
+86-769-85151668

**Beijing**  
+86-10-53856584

**Shenzhen**  
+86-755-82794229

**San Jose**  
+1-408-3341981

**Chengdu**  
+86-28-87440813

**Frankfurt**  
+49-171-3669549

**Chongqing**  
+86-158-23468769

**Singapore**  
+65-81391296

**Kunshan**  
+86-512-57378981

**Taipei HQ**  
+886-2-29612525

**Bangalore**  
+91-761689680

**Wuhab**  
+86-139-73919421

**Kaohsiung**  
+886-7-3601161

**Tokyo**  
+81-03-52957090

**Hong Kong**  
+852-23014671

**Zhubei**  
+886-3-5506368

**Seoul**  
+82-70-75432531

**Hanoi**  
+843-88051121

[www.ccpcontactprobes.com](http://www.ccpcontactprobes.com)  
[ccp\\_service@pccp.com.tw](mailto:ccp_service@pccp.com.tw)