

CCP Contact Probes

Medical Connector



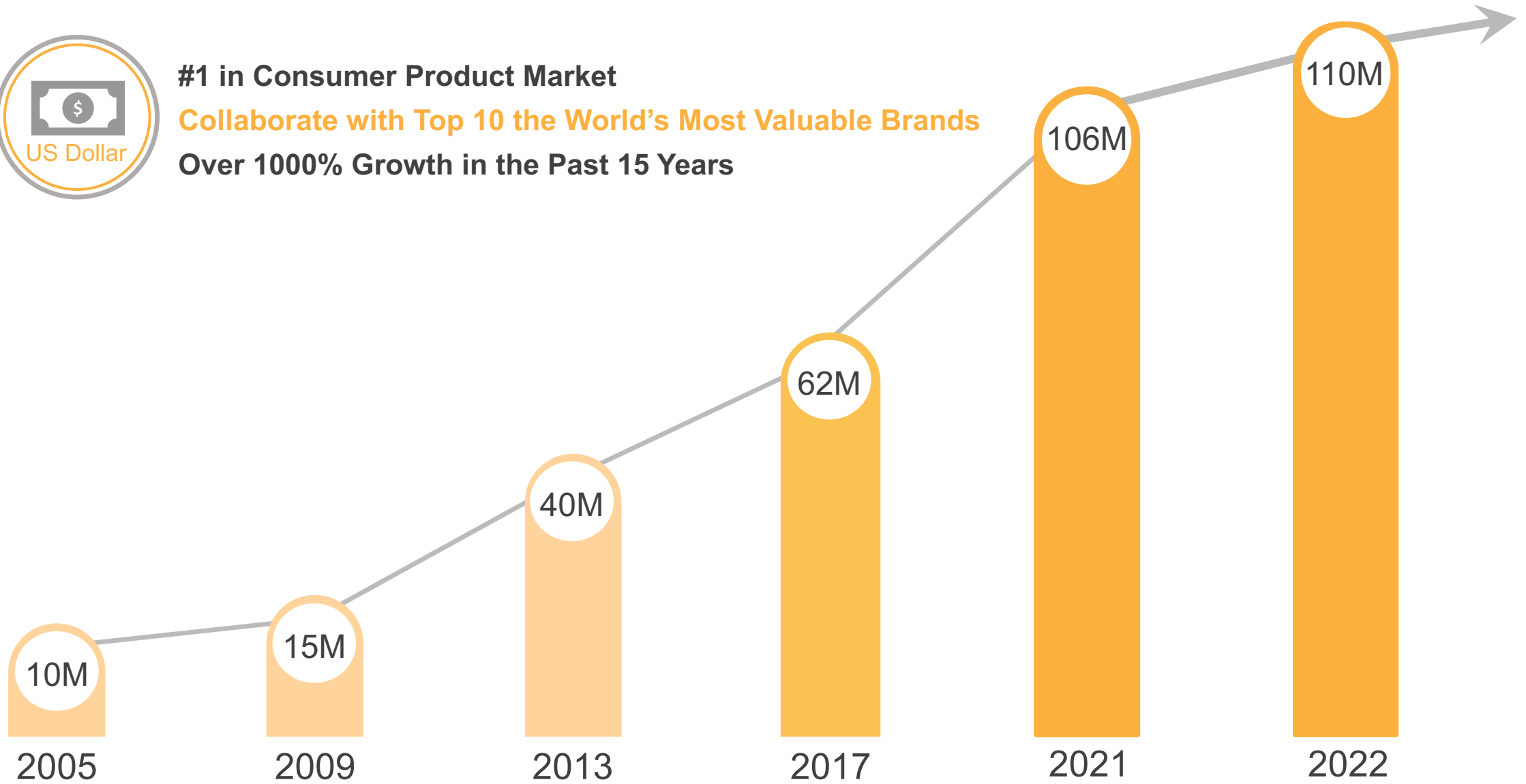
CCP Contact Probes - Growth



#1 in Consumer Product Market

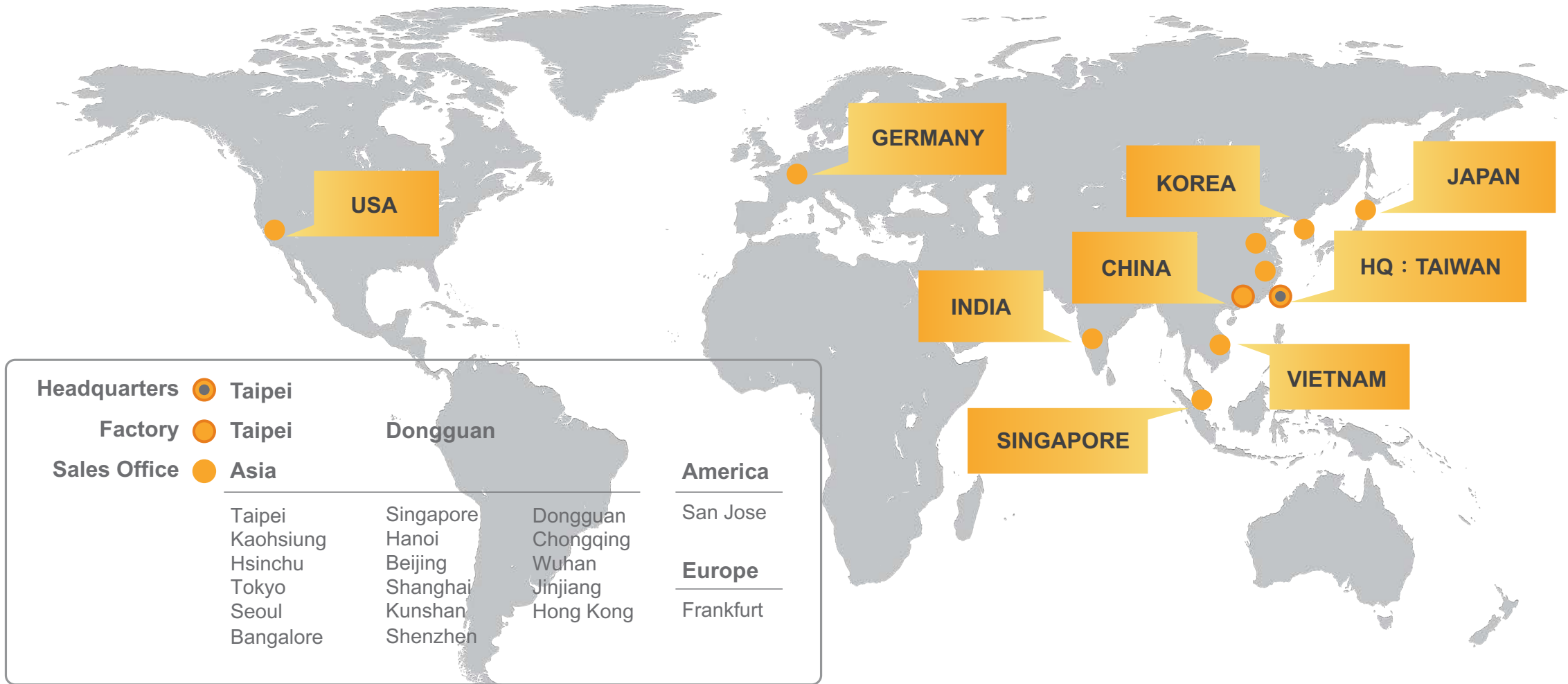
Collaborate with Top 10 the World's Most Valuable Brands

Over 1000% Growth in the Past 15 Years





CCP Contact Probes - Worldwide



Google

amazon

ADVANTEST

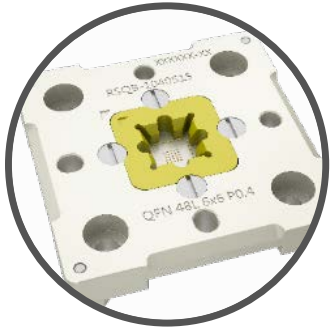
flex



FOXCONN



CCP Contact Probes - Product Portfolio



Testing Solution

Fine Pitch

IC Testing Probe
PCB Testing Probe
Testing Socket



Pogo Pin Connector

1A~13A

Pogo Pin Conn.
Waterproof Conn.
Magnetic Conn.



High Current Connector

13A~250A

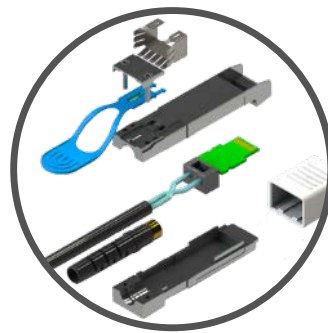
Electronic Vehicle
High Current Conn.



Medical Connector

Environmental Sensitivity

Circular Conn.
Endoscope Conn.



High Speed Cable

25Gbps~100Gbps

Server
Switch
Telecom



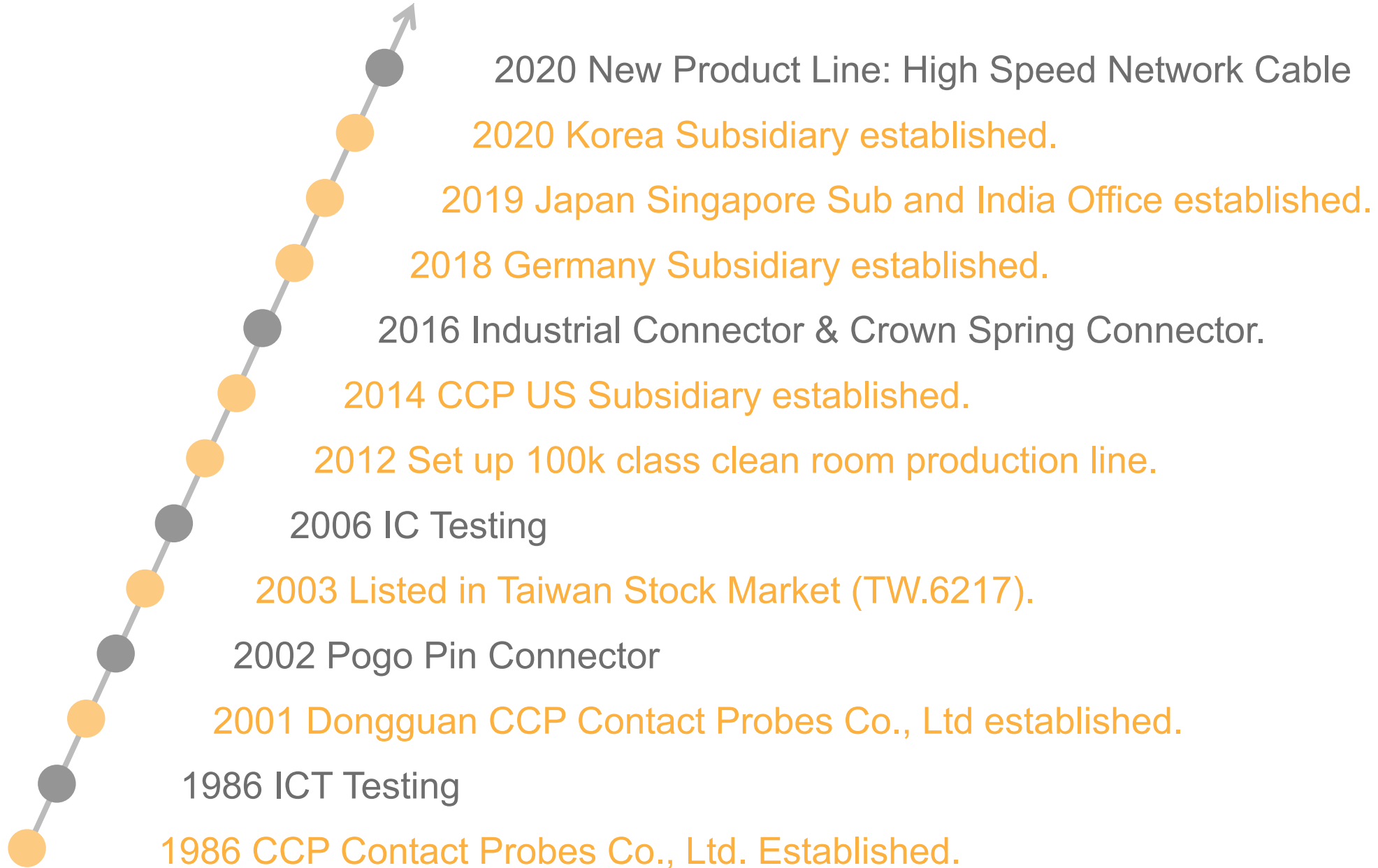
Industrial Solution

Extreme Environment

Aerospace
Military
Transportation



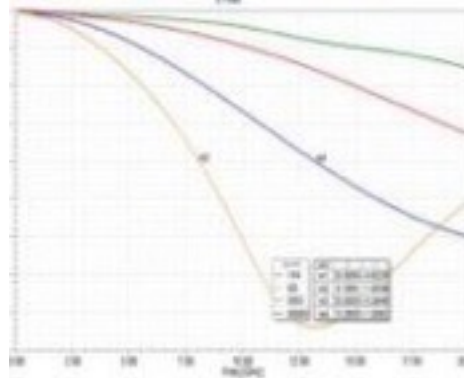
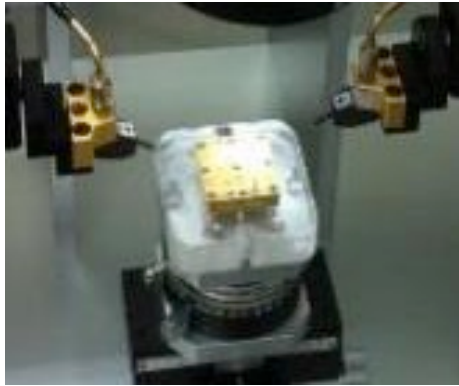
CCP Contact Probes - History





Core Advantages

High Frequency Simulation



HFSS

Material Development

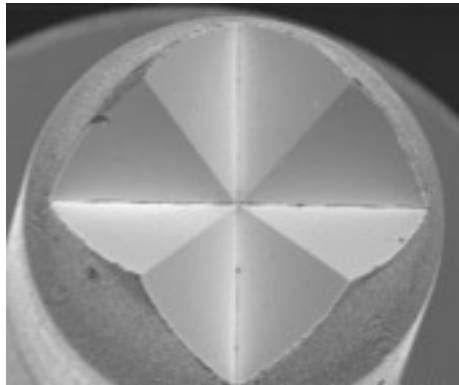


Plating Lab

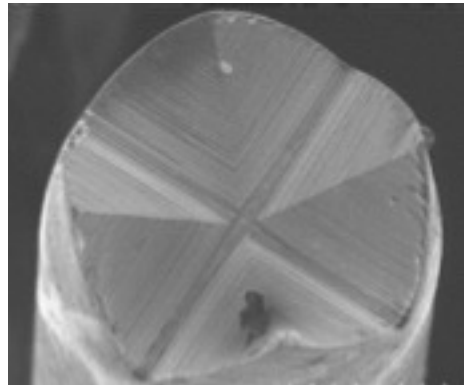


Self-owned Plating Factory

Mirror Process

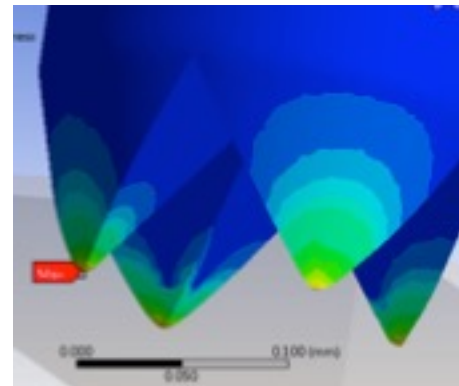


CCP's Product



Other Provider

Finite Element Analysis



ANSYS



Medical Connector Product Line



Critical Care System



Brainwave Headband



Catheter



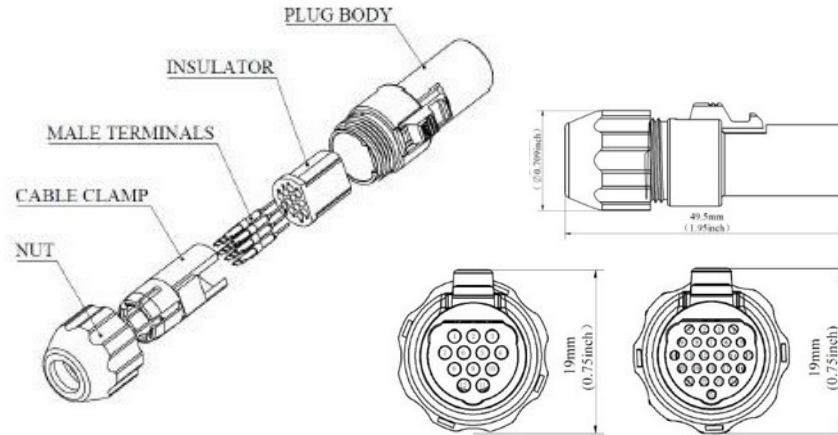
Endoscope





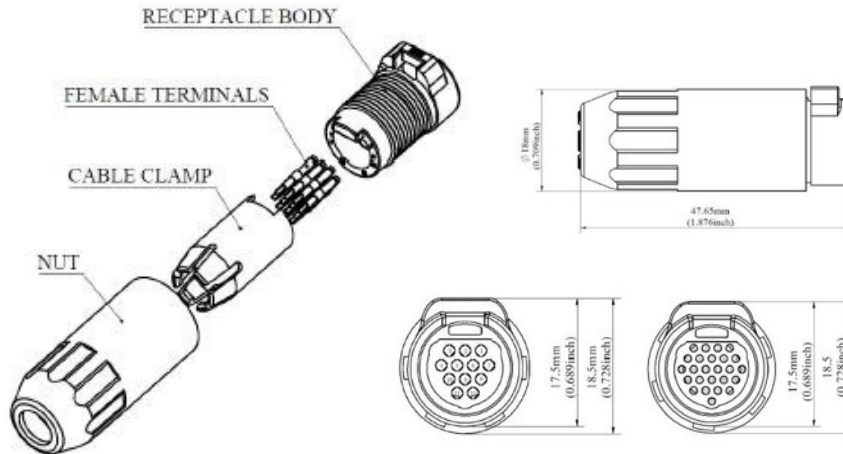
Medical Connector Product Line

Plug



Extremely Low Force
Error Proof Safe Lock
10,000 Life Cycles

Receptacle





Medical Connector - High Frequency Waterproof

- Application: Medical / Military
- High Speed Transmission
- Customized Size: M8, M10, M12, M16, M18 (Type-C: min. M14)
- Customized Plating Color



Waterproof Level: IP57





Testing Solution - Integrated Manufacturing



Automatic CNC lath



CNC spring coiling machine



Surface treatment production line



Semi-automatic assembly machine



Automatic assembly machine



Automatic probe **full inspection**





Testing Capability - Test Equipment

Electrical Performance



Network Analyzer



VNA (Vector Network Analyzer)



High Current Power Supply & Electronic Load



Contact Resistance Tester



RCA Tape Abrasion Tester

Mechanical Performance



Safety Comprehensive Analyzer



Mechanical Vibration/Shock



Automatic Insertion Force Tester



Durability Cycling Machine

Environmental Testing



Oven



Waterproof test machine



Flush test chamber



Thermal shock test machine



Salt spray test machine

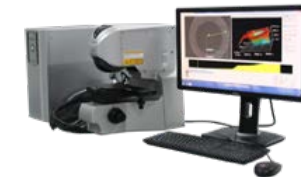


Temperature & humidity test machine

Other



Hot-Air Reflow machine



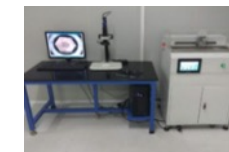
3D laser scanning microscope



X-ray



Electrochemical workstation



Terminal cross section analyzer



Quality System

ISO 9001:2015

Quality Management Systems

IATF 16949:2016

Automotive Quality Management System

ISO 14001 : 2015

Environment Management Systems

QC 080000

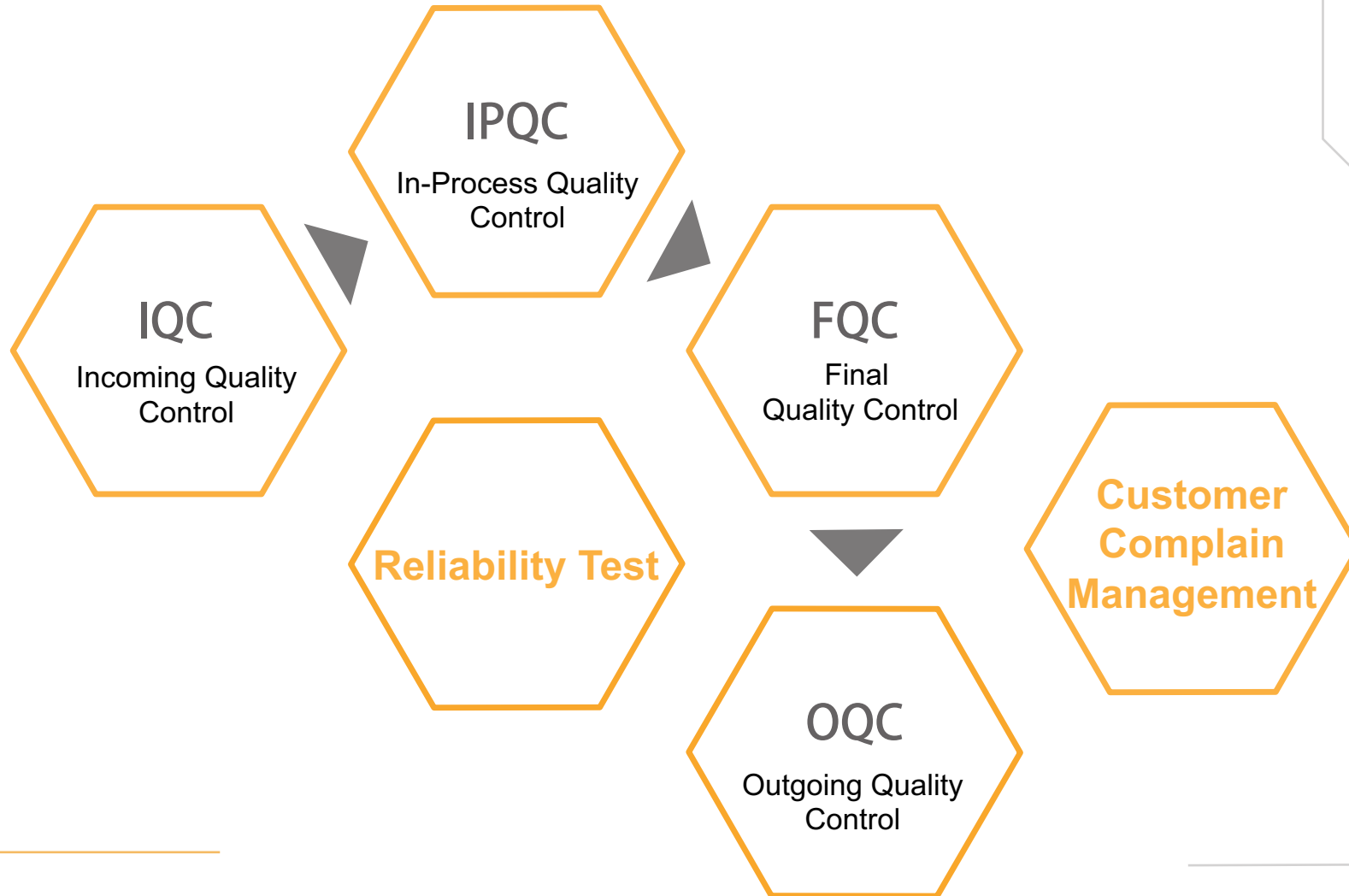
Hazardous Substance Process Management

ISO 13485:2016

Medical Devices Quality Management Systems



Quality Assurance





Verification Ability

Testing Items

Environmental

Waterproof

Humidity Test

Salt Spray

Thermal Impact

Resist. to Solder Heat

Vibration

Electrical

Contact Resistance

Insulation

HIPOT

Rated Current

Mechanical

Retention Force

Life Cycle

Vibration

Mechanical Shock

Other

Drop

Soldering Side Force

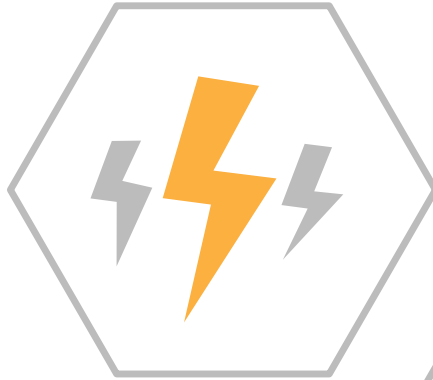
Solderability



Testing Equipment

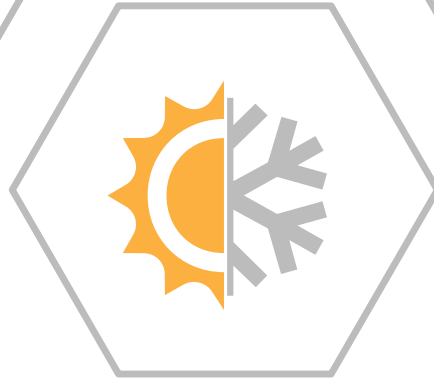
Rated Current

Max Rating : 1000Amp



Waterproof

Test Level : IPX7 Up



Thermal Impact

Range : -60~120°C

Resolution : 0.01°C



Vibration

Frequency : 3500Hz Max.

Acceleration : 50G Max.



Certificate

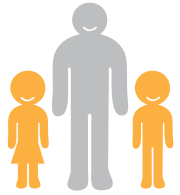


- ISO 9001
- ISO 13485
- ISO 14001
- ISO 14064
- IATF 16949
- IECQ QC080000





Social Responsibility



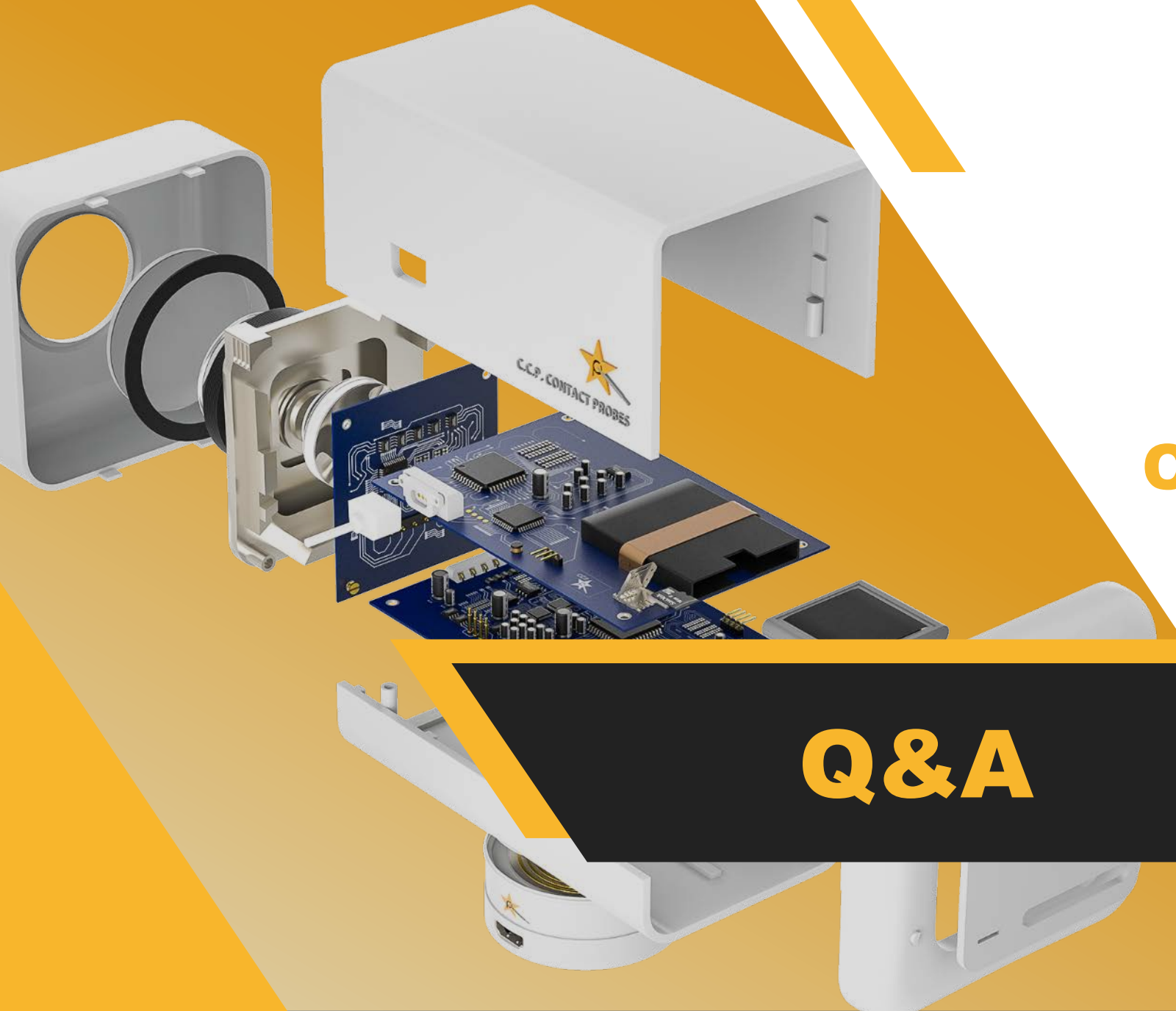
Summer camp for employees' children



Home visit to employees around the world



CCP offers tuition scholarship for employees' children



CCP Contact Probes

Q&A

info@pccp.com.tw
www.ccpccontactprobes.com

