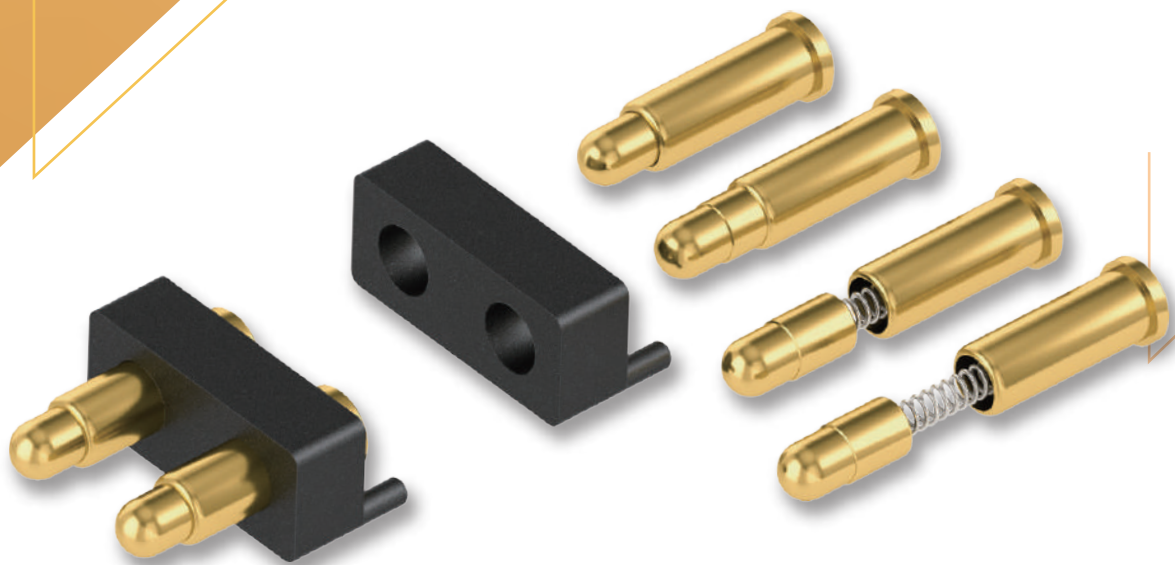


# Pogo Pin Connectors



Single Pins  
Connector Modules  
Customized Connectors



C.C.P. CONTACT PROBES

# TABLE OF CONTENT

	01	————	About C.C.P. Contact Probes
	04	————	Pogo Pin Introduction
	08	————	C.C.P. Plating Technology
	10	————	Pogo Pin Application
	12	————	Waterproof Connector
	13	————	Ball Point Connector
	14	————	Screw Pin
	15	————	Magnetic Connector
	16	————	High Current Pin
	17	————	Ultra Small Pin
Product List	18	————	Single Pin
	24	————	Non Standard Connector
	47	————	Ball Point Connector
	48	————	Waterproof Connector
	51	————	Magnetic Connector
	52	————	High Current Pin
	53	————	Double End Pin
	54	————	Ultra Small Pin
	55	————	Screw Pin

# ABOUT US

Introduction

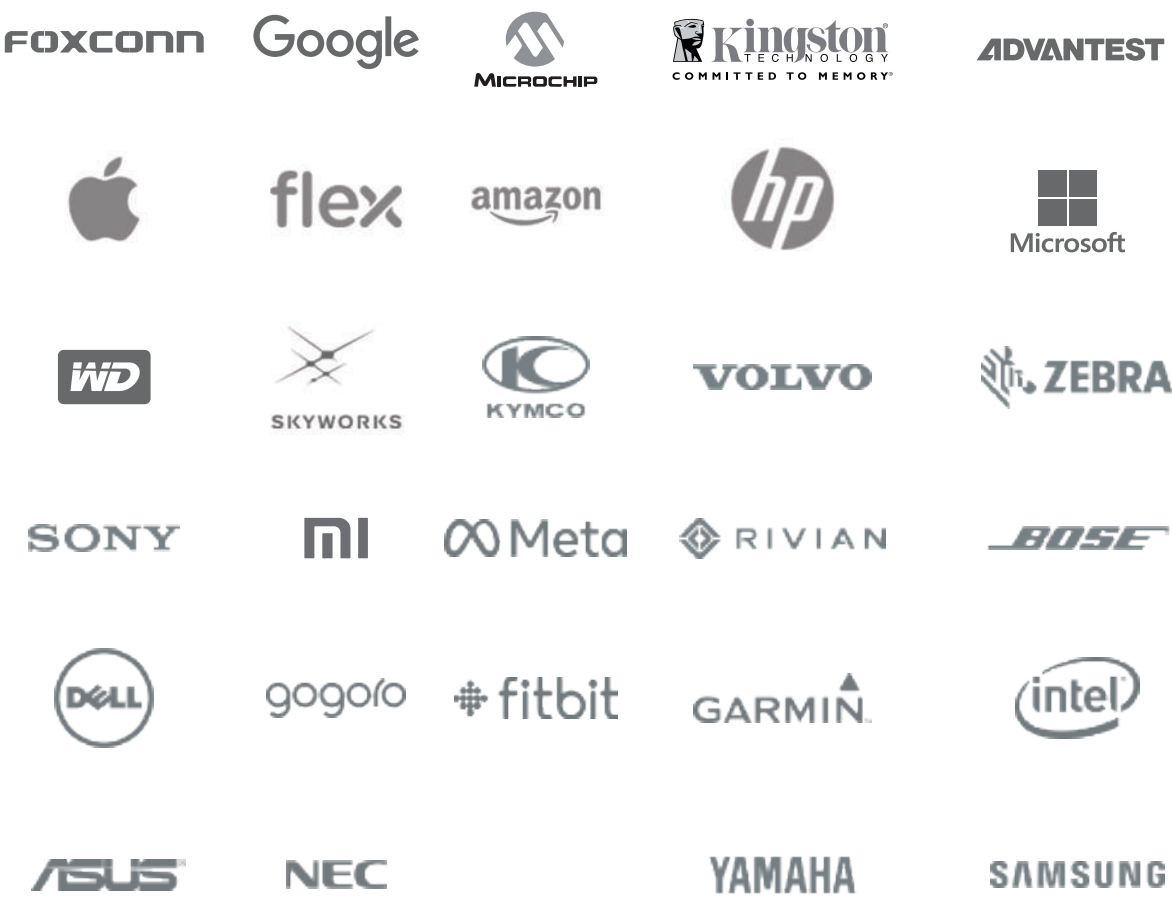
High-Precision Interconnect Solutions for the Future of Electronics, Robotics, and Mobility.

C.C.P. Contact Probes Co., Ltd. is a global innovator in contact probes, pogo pins, and advanced spring-loaded interconnect solutions.

Since 1983, we have powered the world’s leading electronics brands including Apple and Amazon—with reliable, high-precision components engineered for next-generation devices.

Backed by strong R&D and a commitment to continuous innovation, we deliver connectivity solutions that set new standards in performance and quality. Publicly listed on the Taiwan Stock Exchange since 2003, C.C.P. now operates across the U.S., China, Germany, India, Japan, and Singapore, supporting customers worldwide with fast, flexible, and future-ready technologies.

## Selected Customers



History

2025	Vietnam Automated Manufacturing Plant / Office Completion
2024	Investment Maansgan Grande Electronics
2023	Capacity Expansion JinJiang Plant / Veitman Subsidiary
2021	Stamping Plant Established / ISO 13485
2020	C.C.P. Korea Established / High Speed Network Cable Product Line
2019	C.C.P. Japan, Singapore & India Established
2018	C.C.P. Germany Established
2016	High Current Connector Product Line
2014	C.C.P. USA Established / IATF 16949 Certified
2003	Listed on Taiwan Stock Market (TW. 6217)
2000	C.C.P. Dongguan Factory Established
1983	C.C.P. Contact Probes Established

Company Culture



Yearly Home Visit



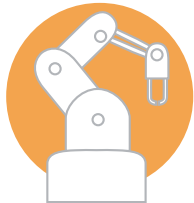
Employee's Children Summer Camp



Tuition Subsidy for Employee's Children



Over 40 Years of Product Development Experience  
Servicing Industry-leading Clients

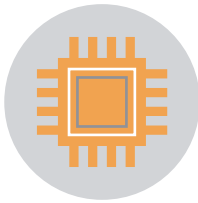


Agile and Flexible Design Process with Self-owned  
Turning and Plating Factory



A Proven Track-record of Reliability, an Industry Certified Quality  
Management System, and State-of-the-art Production Equipment

Product Lines



Testing  
Solutions



Commercial  
Connector Solutions



High Current  
Connector Solutions



Industrial  
Connector Solutions



Pogo Pin  
Connector

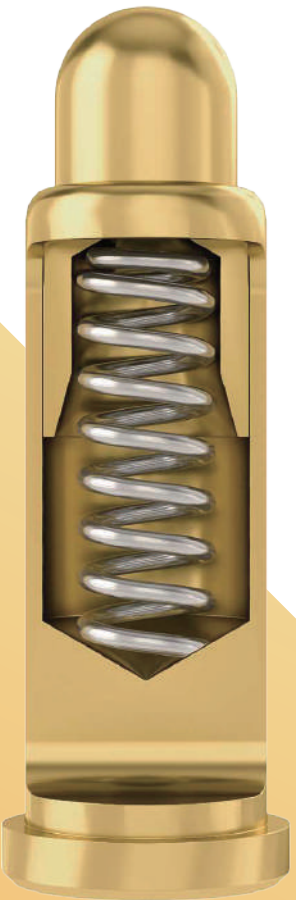
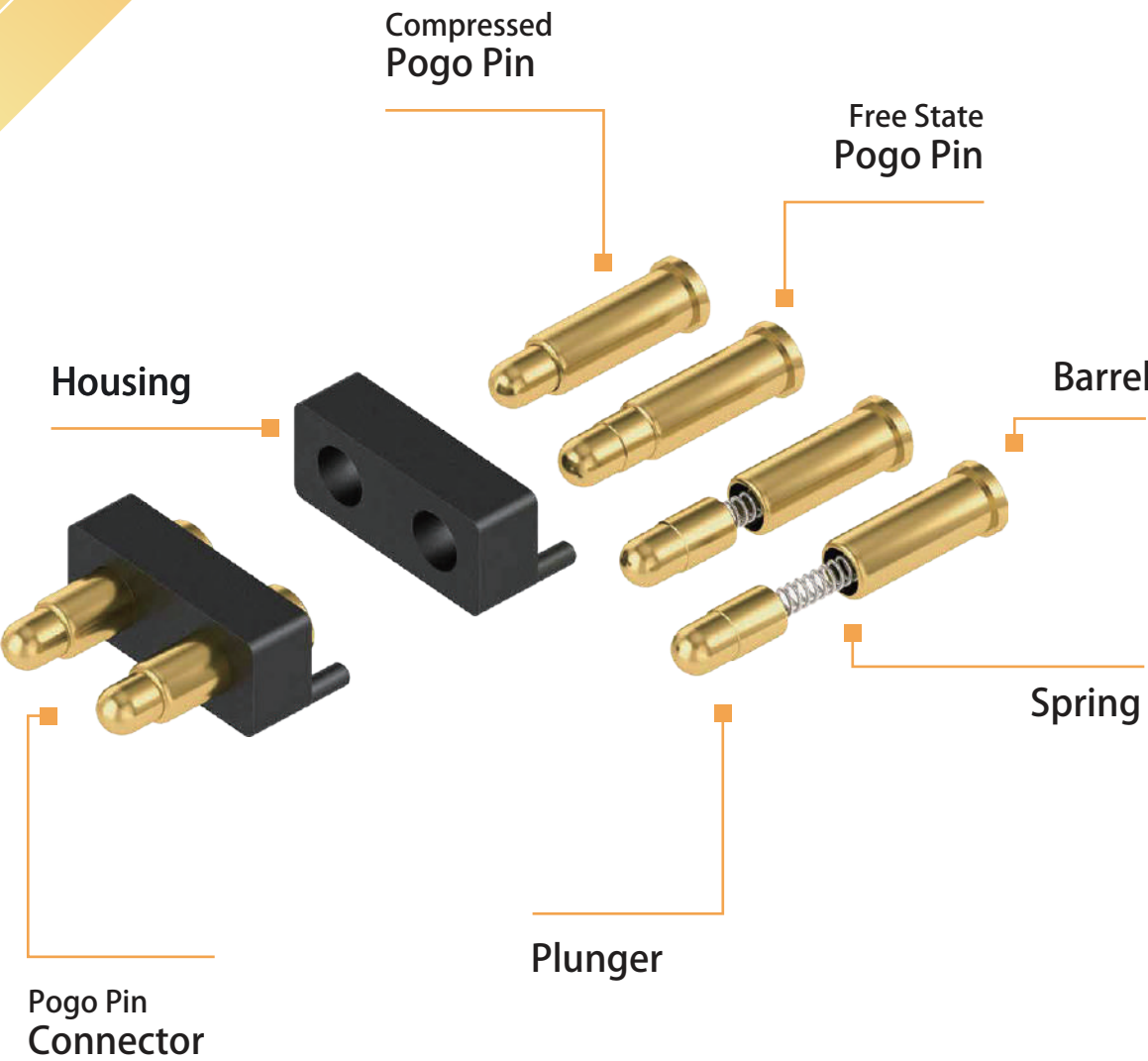


Magnesium  
Alloy

# POGO PIN INTRODUCTION

# WHEN TO USE POGO PINS

Advantage



## IMPROVED USER EXPERIENCE

Easy to plug-in, no accidental rip off of the cable.



## STABLE CURRENT FLOW

Different pogo designs maximize the stability of the current flow, by increasing the number of contact points inside the pin.



## SMALL VOLUMES POSSIBLE

Pogo pins are produced with high precision turning machines and don't require a mold as it is the case for other connectors that are using a stamping process.



## LIMITED SPACE & HIGH CURRENT

The trend towards miniaturization in the electronics industry is continuing. No other connector has a better space to current ratio as a pogo pin.



## SIMPLIFY ASSEMBLY AND SAVE COST

The complexity of today's electronics increases the assembly costs and difficulty significantly. Pogo pins not just reduce the manual labor time for inserting cables or pins, they also open up new design and arrangement options for industrial designers and engineers.



## HIGH TOLERANCE

Small errors in the production often lead to unstable connectors as they are not properly touching the surface of their counterpart. Pogo pins allow extremely high tolerances in the production and thereby decreasing the likelihood for errors.



## LONG LIFE-TIME

Pogo pins have a far superior life-time as compared to other connector types as they minimize the mechanical strain on the parts.



The current a pogo pin can carry depends largely on 3 factors:



Number of Contact Points

The ball design maximizes the number of contact points, thereby allowing a higher and more stable flow of current.



Spring Force

The higher the spring force, the better the plunger is pressed against the wall of the barrel, allowing a stable current flow.

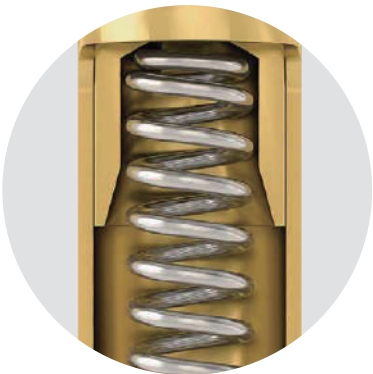


Material

Different material types can heavily influence the conductivity of the pin, but also the roughness is important to increase the current flow.

BACK DRILL

The drilled plunger creates extra space for the spring and allowing shorter pogo pin designs.



Pin Length:  $\approx$  2.5 mm  
Current: 1 A

BIAS TAIL

The biased tail of the plunger creates a lateral force and better contact.



Pin Length:  $\approx$  3.5 mm  
Current: 2 A

BALL

The ball inside stabilizes the contacting areas for a better performance.



Pin Length:  $\approx$  4.5 mm  
Current: 3~5 A

Housing

Polyoxyethylen (Standard)  
PBT Polybutylene terephthalate  
LCP Liquid-crystal polymers  
HTN Polyphthalamide  
PA10T

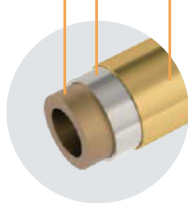
Ball

Stainless Steel

Plunger

Brass (Standard)  
Beryllium Copper  
Phosphor Bronze  
SK4

Surface Plating  
Base Plating  
Base



Spring

Stainless Steel

Barrel

Brass (Standard)  
Beryllium Copper  
Phosphor Bronze

When should you use which surface plating?

Plating	Hardness (HV)	Function	Color
Gold	200	Low resistance	Gold
Super AP	400	Superior corrosion resistance, low electrical resistance	Silver
Nickel	150-200	Low cost, corrosion resistant	Silver
Palladium-Nickel	330-380	Improved signal transmission	Silver
Red Brass (CuSnZn)	600	Replace Nickel	Silver
Palladium Cobalt	450-600	Replace Pd-Ni	Silver
Palladium Cobalt	600-800	Black color requirement	Black

C.C.P.'s AP plating is the gold-standard of the industry. Its superior composition makes it extremely resistant to electrolytic corrosion while maintaining a very low resistance. The perfect solution for any kind electrical application.

GoldAP Plating

0 Min



5 Min



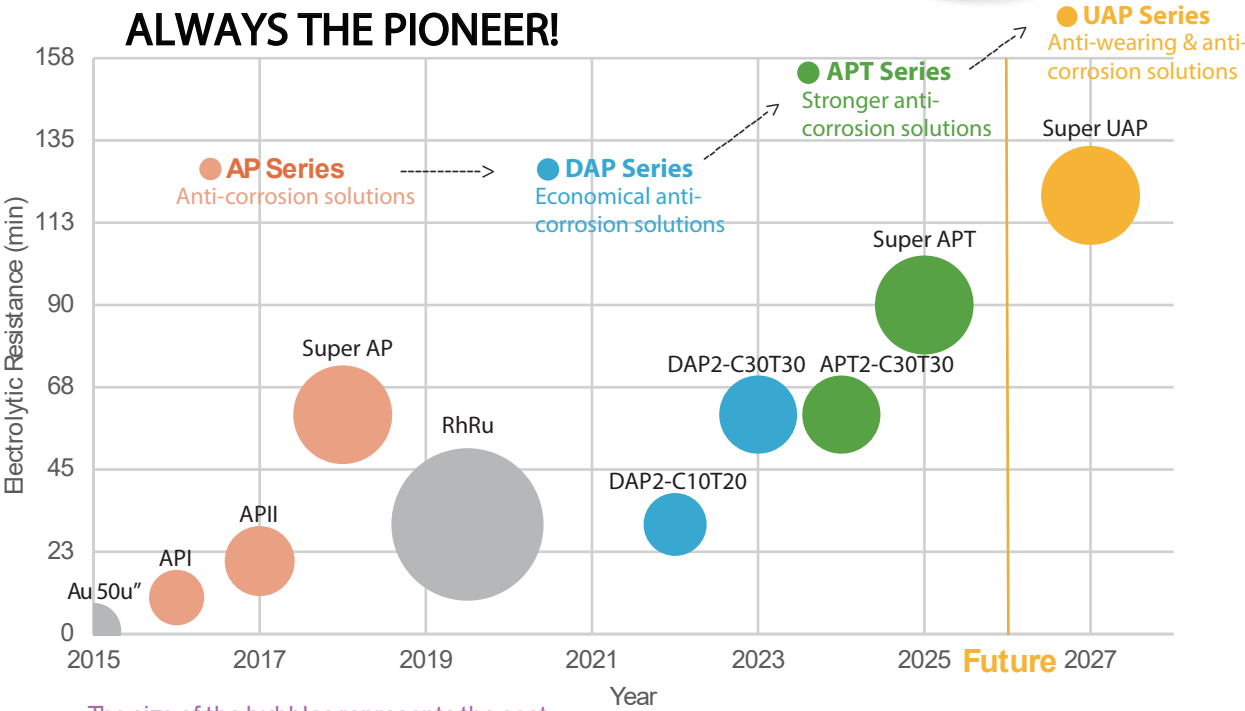
10 Min



50 Min



ALWAYS THE PIONEER!



Understanding Galvanic Corrosion:

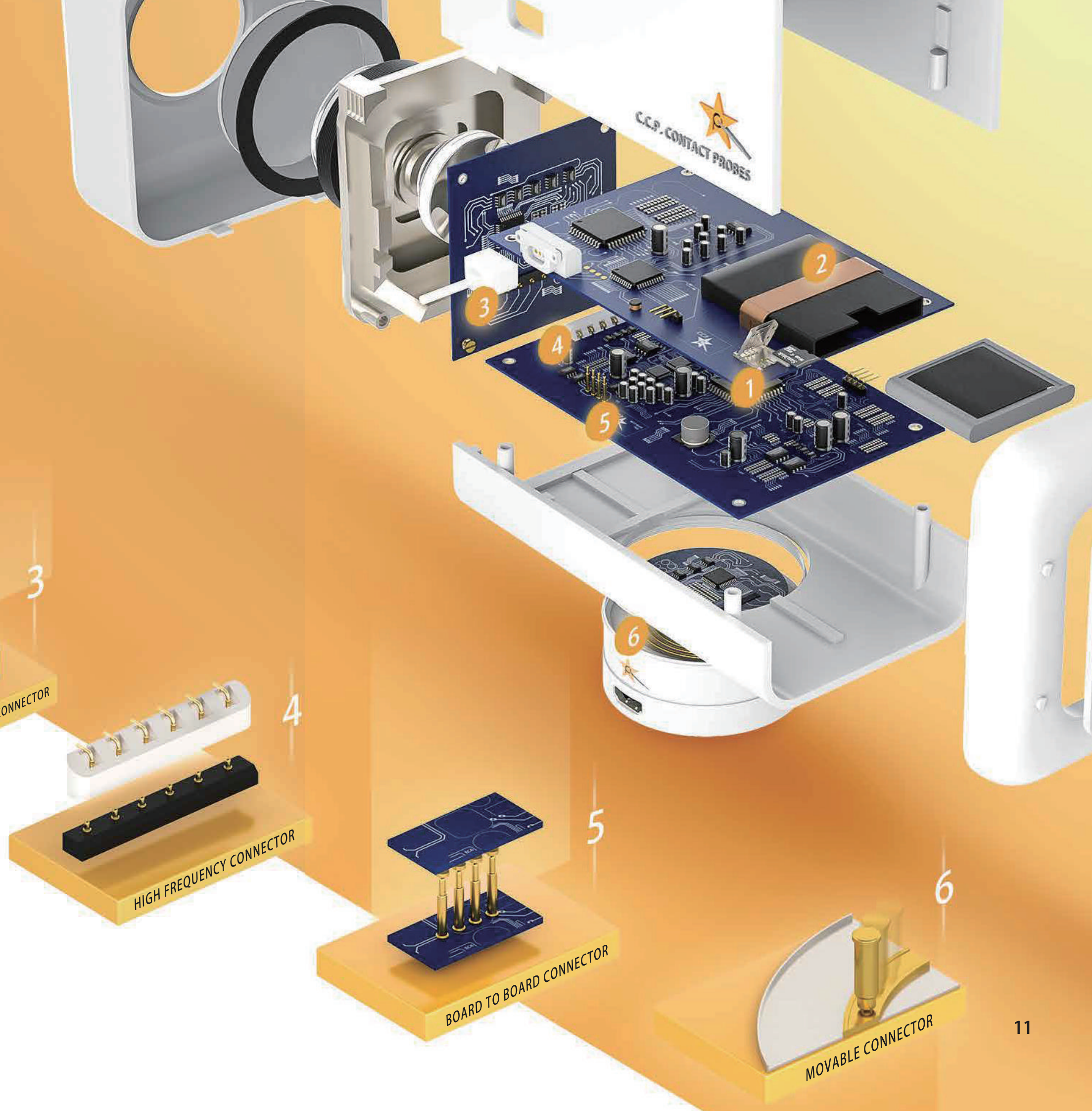
Galvanic corrosion occurs, when two different metals of different nobility get into close contact in the presence of an electrolyte such as water. Dissimilar metals have different electrode potentials which cause one of the metals to act as a cathode and the other as an anode. The resulting current flow is the main cause for the corrosion of the lesser noble (anode) metal. Acid or alkali environments, for example on human skin, can accelerate galvanic corrosion significantly and attack even metals such as gold and plating.

Plating Spec.	Test standard	Au(50u")	API	APII	Super AP	DAP2-C10T20	DAP2-C30T30	Super APT
Color	/	Gold	Silver	Silver	Silver	Silver	Silver	Silver
Impedance (mΩ)	EIA-364-23	< 50	< 50	< 50	< 50	< 50	< 50	< 50
Surface Hardness (HV)	ISO 6507-1:2005	200	400	400	400	400	400	400
Salt Spray Resistance (HR)	EIA-362-26	> 144	> 48	> 96	> 168	> 96	> 168	> 168
Artificial Sweat Resistance (HR)	ISO-3160-2:2015	> 144	> 48	> 96	> 168	> 96	> 168	> 168
Electrolysis Resistance Time (Min)	5V Constant Voltage	< 1	> 5	> 15	> 60	> 30	> 60	> 90



## POGO PIN APPLICATIONS

Spring loaded connectors can be used for a wide variety of applications. Their versatility make them true allrounders, from charging applications to high frequency signal transmission.



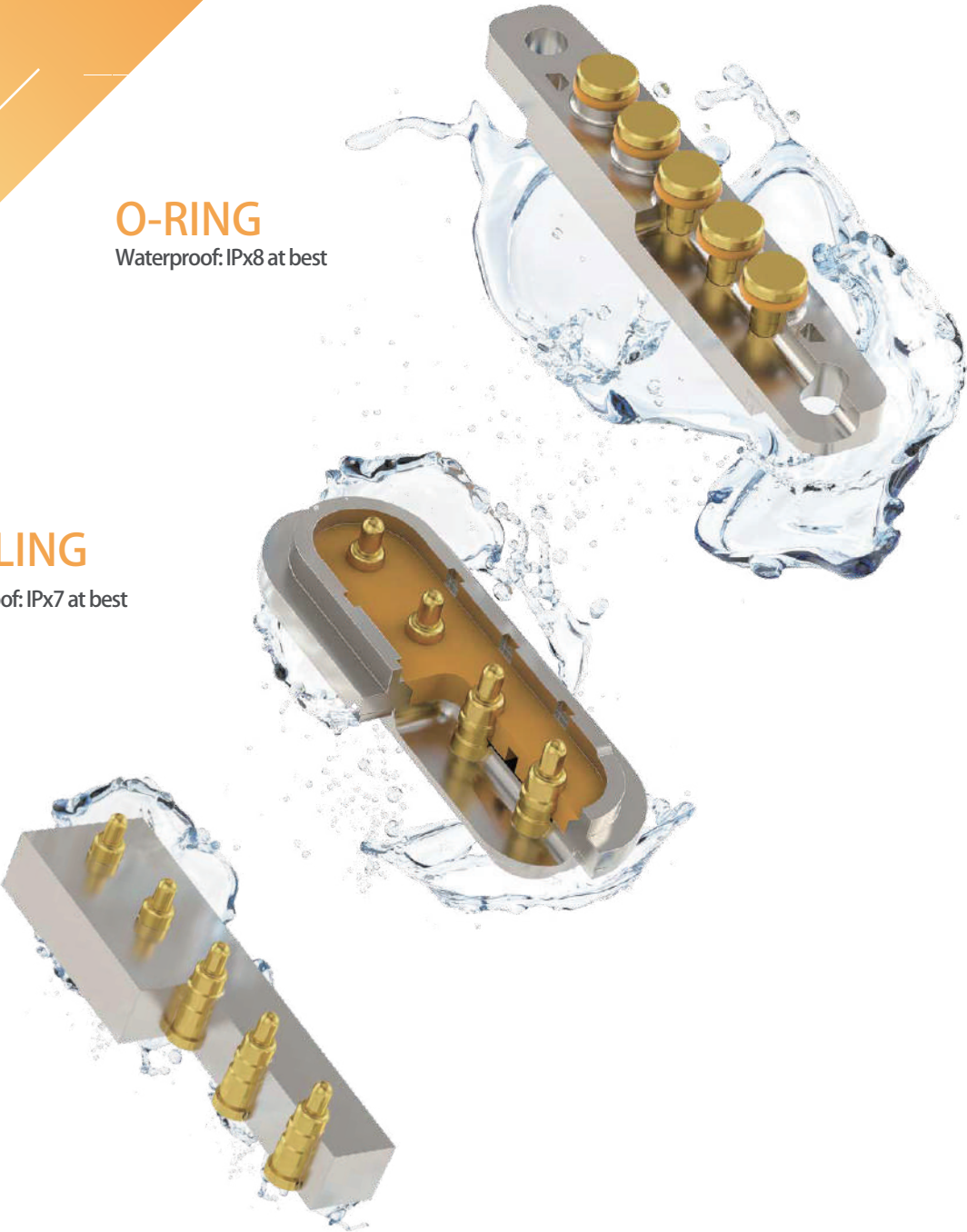


# WATERPROOF CONNECTORS

O-RING  
Waterproof: IPx8 at best

SEALING  
Waterproof: IPx7 at best

INSERT MOLDING  
Waterproof: IPx7 at best  
No SMT Process Possible

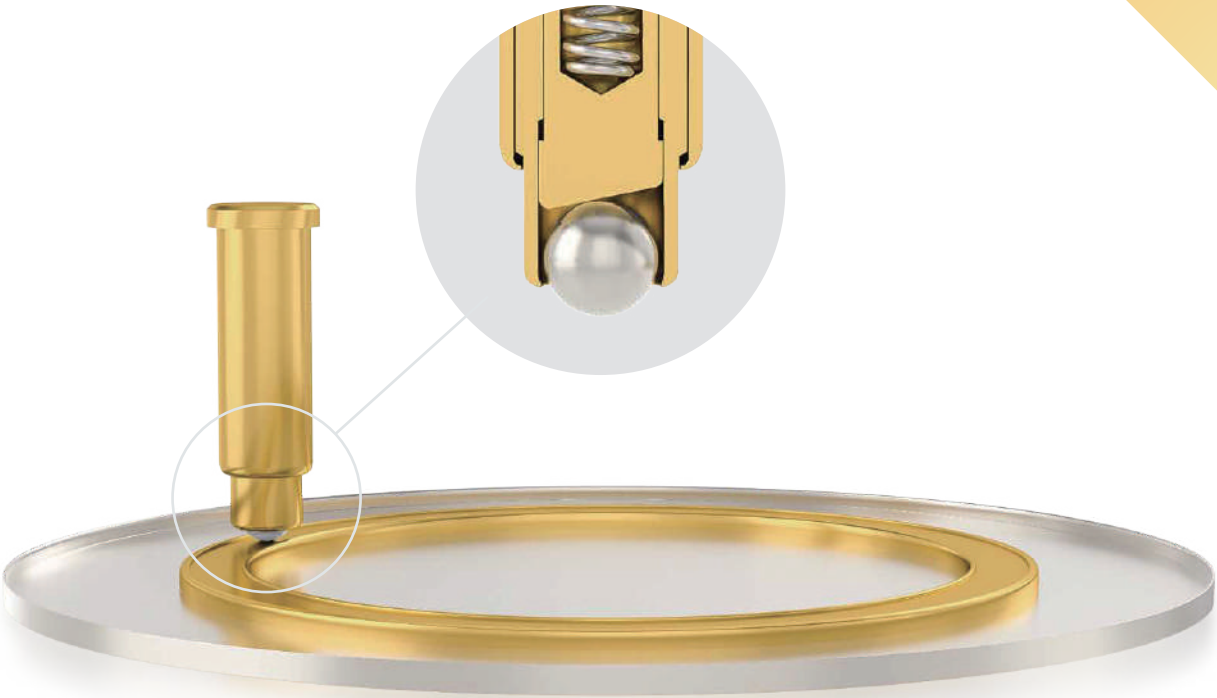


DOES WATER HARM POGO PINS?

CCP's waterproof pogo pin connectors are designed to withstand any long and short term submersion in water. For very challenging environments we recommend our SuperAP Plating which can withstand the effects of Galvanic Corrosion up to 60 times longer.

# BALL POINT CONNECTOR

Keeping a stable connection to a moving target can be a challenge, as constant strain on the components can result in degradation of the materials and in worst case to a malfunction. The Ball-Point Connector solves this problem by a radically new design that offers totally new engineering possibilities and a simplified assembly without cables.

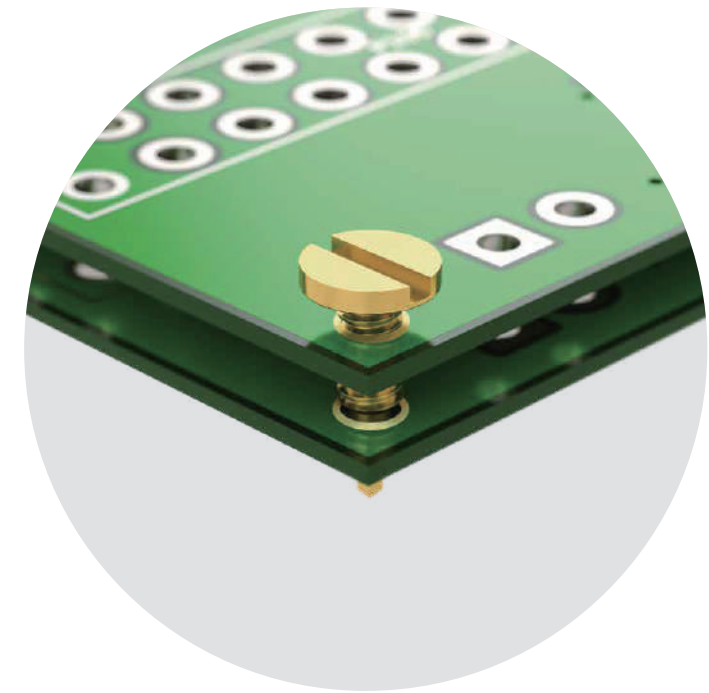
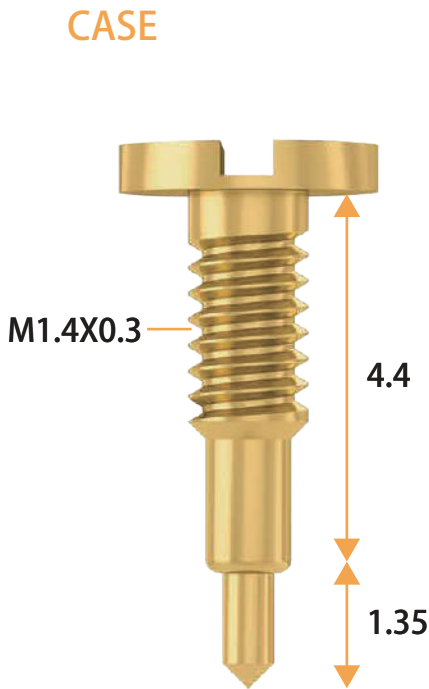


Diameter	Current	Durability
Min 1 mm	1A - 5A	Min 10'000 Compressions
Spring Force	Contact Resistance	Travel Distance
145g ± 20g	30 mΩ — 100 mΩ	Up to 25 km



# SCREW PINS

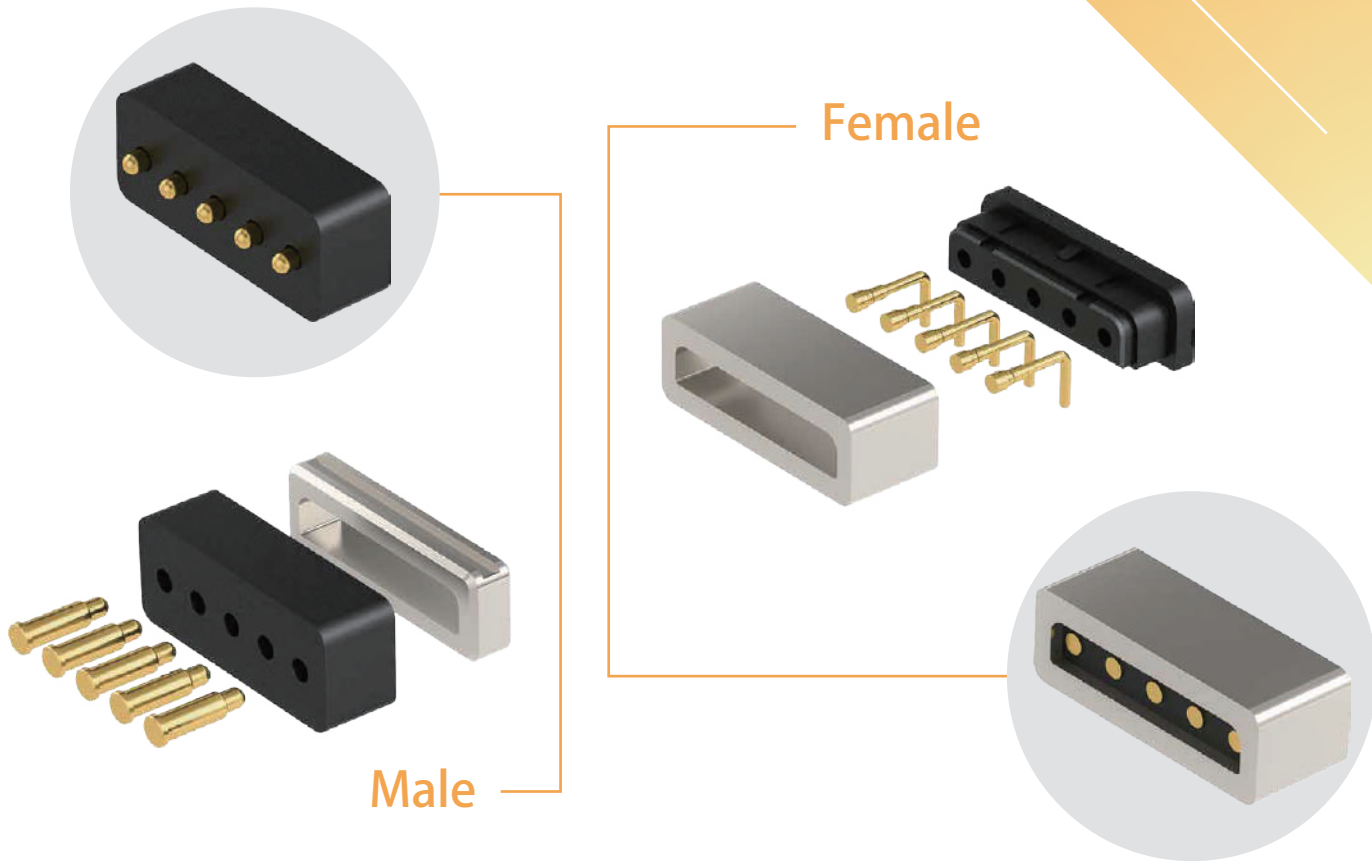
CCP's Screw Pin design is a smart way to utilize a pogo pin as a connector as well as a mounting part, reducing the assembly cost significantly and opening new design possibilities for industrial engineers.



Diameter	Current	Durability
3 mm	1A	10,000 compressions
Spring Force	Contact Resistance	
120g ± 20g	200 mΩ	

# MAGNETIC CONNECTORS

● Magnet ● Plastic Housing ● Pogo Pin



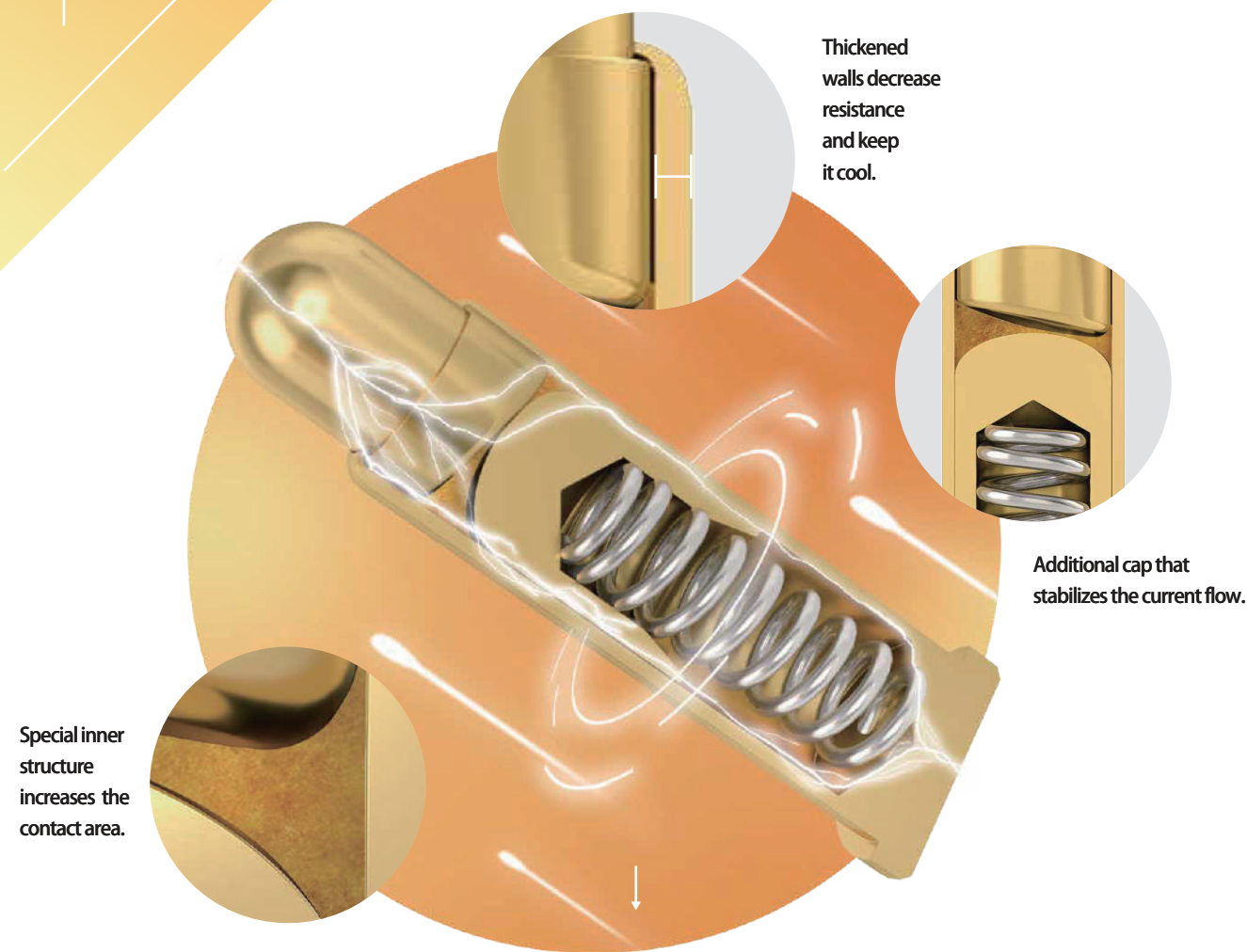
Easy to plug  
Very durable

No accidental breaking  
Suitable for high frequency transmission

Assembly Options		
Metal injection molded housing	Two magnets	One magnet to metal

# HIGH CURRENT PINS

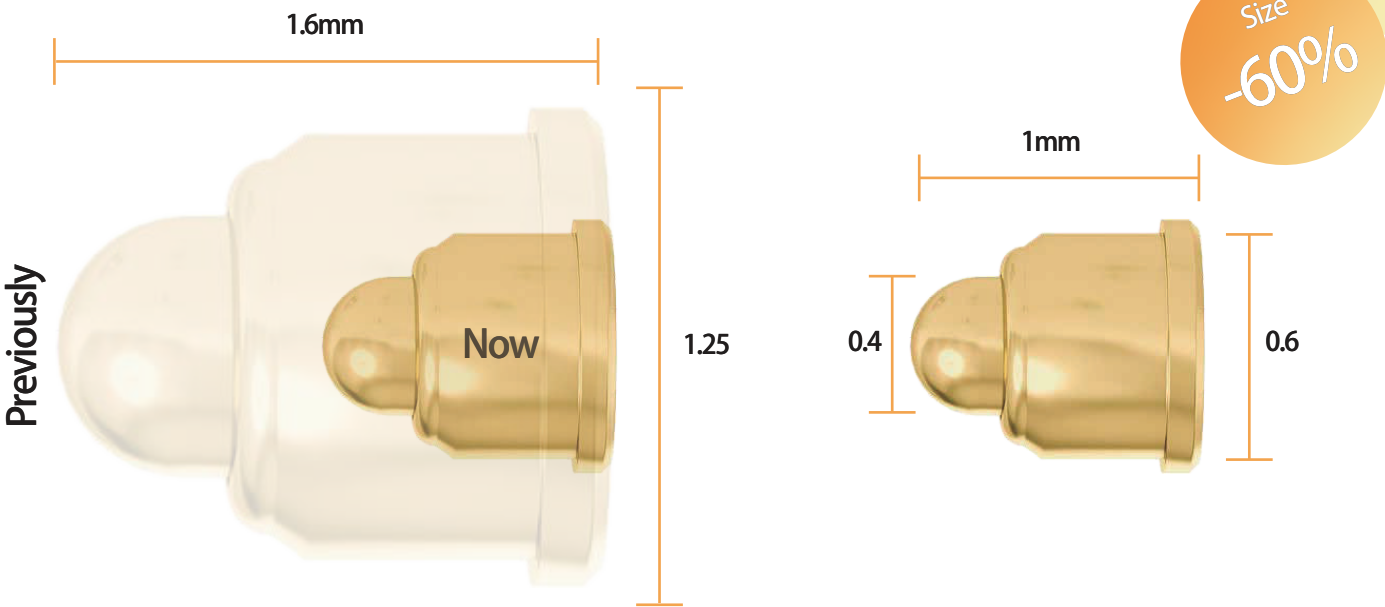
CCP's new high current designs takes Pogo Pins to a new level that is second to none in the industry.



Diameter		Current	Durability
2.4 mm		13A	10,000 compressions
Spring Force		Contact Resistance	
120g ± 20g		30 mΩ	

# ULTRA SMALL PINS

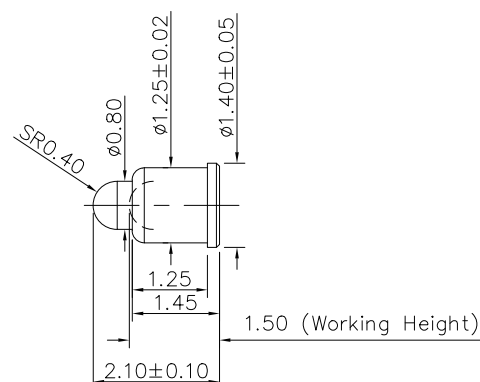
Meet the smallest bias-cut pogo pin on the market today making even the most compact designs possible. The pin is so small, that you could fit over 100 pins on the tip of your finger.



Diameter		Current	Durability
0.6 mm		1A	3,000 compressions
Spring Force		Contact Resistance	
25g		175 mΩ	

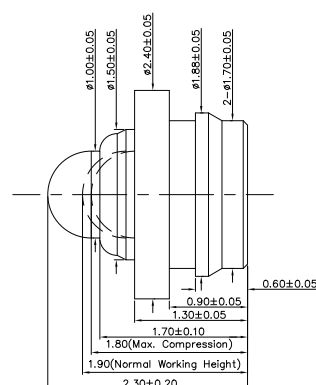
# SINGLE PIN

# SINGLE PIN



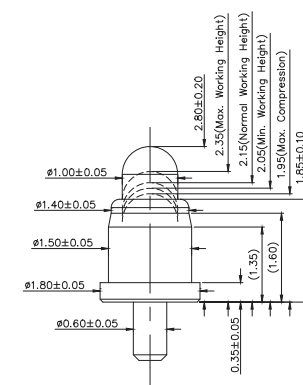
PN: H199M2-R

Length: 2.10 mm  
Working Height: 1.50 mm  
Current: 1 Amp  
Contact Resistance: 100 mΩ  
Spring Force: 100g±20%



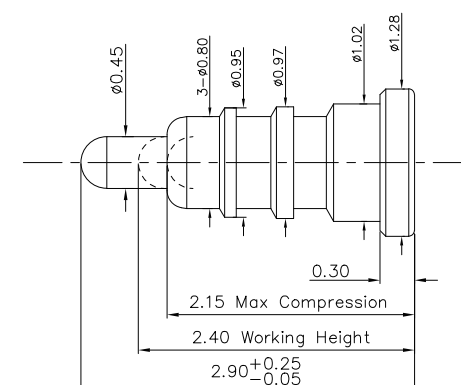
PN: P5271FP04

Length: 2.30 mm  
Working Height: 1.90 mm  
Current: 1 Amp  
Contact Resistance: 100 mΩ  
Spring Force: 80g±20g



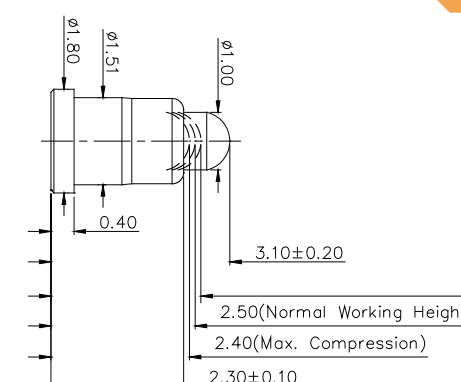
PN: P5625MF01-01A000CR

Length: 2.80 mm  
Working Height: 2.15 mm  
Current: 1 Amp  
Contact Resistance: 100 mΩ  
Spring Force: 40g±15g



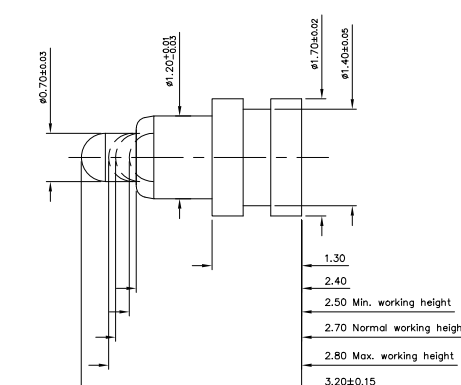
PN: P2988FH03

Length: 2.90 mm  
Working Height: 2.40 mm  
Current: 1 Amp  
Contact Resistance: 50 mΩ  
Spring Force: 60g±20g



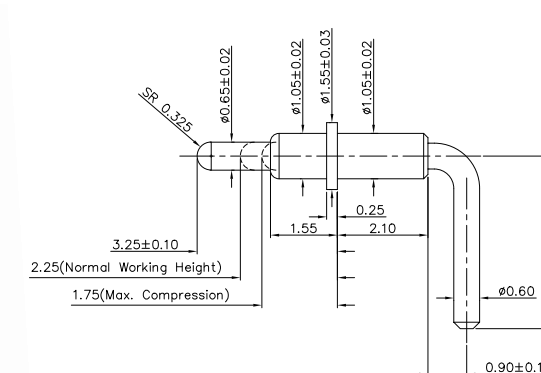
PN: P3198FH01

Length: 3.10 mm  
Working Height: 2.50 mm  
Current: 1 Amp  
Contact Resistance: 50 mΩ  
Spring Force: 80g±20g



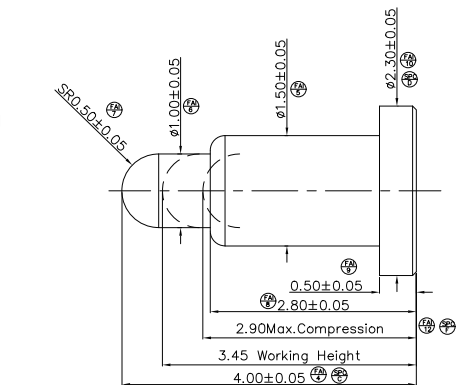
PN: P2616FH03

Length: 3.20 mm  
Working Height: 2.70 mm  
Current: 1.5 Amps  
Contact Resistance: 50 mΩ  
Spring Force: 80g±20g



PN: P3533BP02

Length: 3.25 mm  
Working Height: 2.25 mm  
Current: 1 Amp  
Contact Resistance: 50 mΩ  
Spring Force: 80g±20g



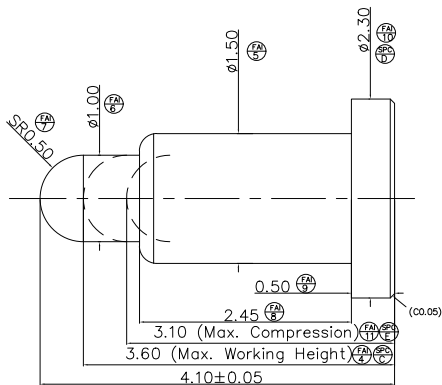
PN: P3775FH01

Length: 4.00 mm  
Working Height: 3.45 mm  
Current: 1 Amp  
Contact Resistance: 200 mΩ  
Spring Force: 45g±10g



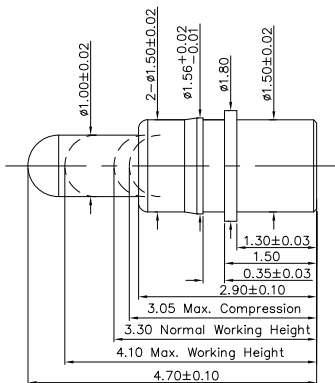
# SINGLE PIN

# SINGLE PIN



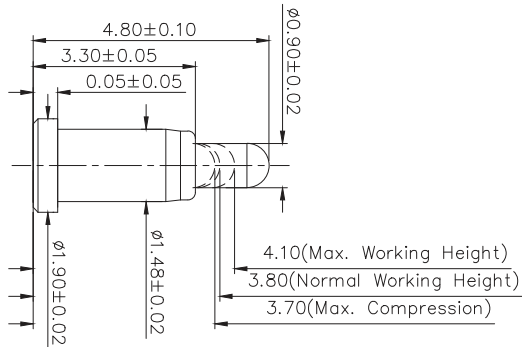
PN: P5067FP01-R

Length: 4.10 mm  
Working Height: 3.60 mm  
Current: 1 Amp  
Contact Resistance: 100 m $\Omega$   
Spring Force: 100g  $\pm$  20%



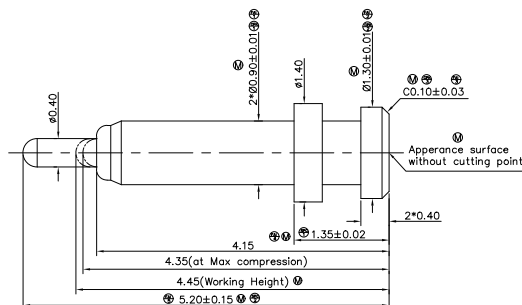
PN: P3697PP01

Length: 4.70 mm  
Working Height: 3.30 mm  
Current: 1 Amp  
Contact Resistance: 100 m $\Omega$   
Spring Force: 60g  $\pm$  20g



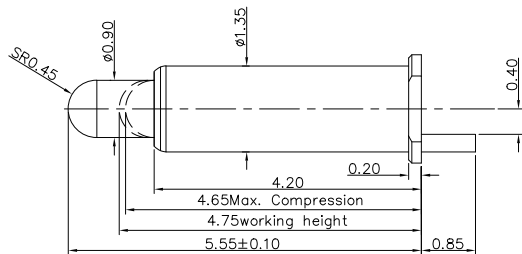
PN: P5660MF03-01A000CR

Length: 4.80 mm  
Working Height: 3.80 mm  
Current: 1 Amp  
Contact Resistance: 50 m $\Omega$   
Spring Force: 70g  $\pm$  20g



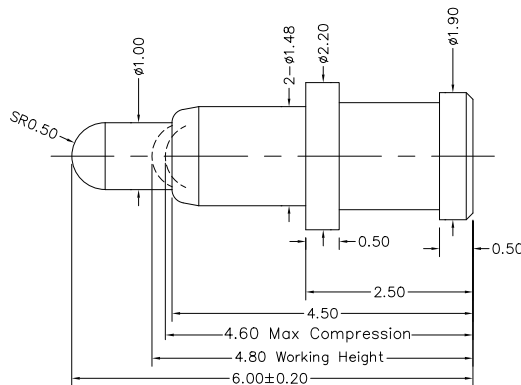
PN: P3989FH01

Length: 5.20 mm  
Working Height: 4.45 mm  
Current: 1 Amp  
Contact Resistance: 50 m $\Omega$   
Spring Force: 65g  $\pm$  15%



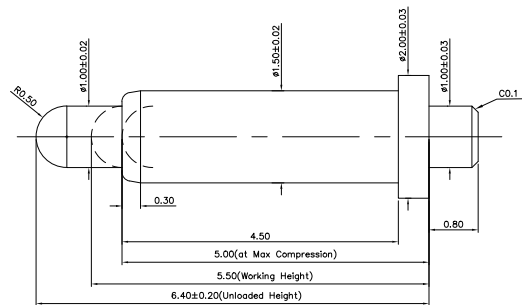
PN: P3730SH02

Length: 5.50 mm  
Working Height: 4.75 mm  
Current: 5 Amps  
Contact Resistance: 50 m $\Omega$   
Spring Force: 100g  $\pm$  20%



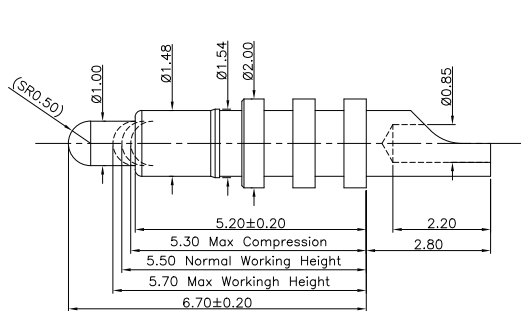
PN: P3256FH01

Length: 6.00 mm  
Working Height: 4.80 mm  
Current: 1 Amp  
Contact Resistance: 50 m $\Omega$   
Spring Force: 120g  $\pm$  20g



PN: H024M0

Length: 6.40 mm  
Working Height: 5.50 mm  
Current: 1 Amp  
Contact Resistance: 50 m $\Omega$   
Spring Force: 100g  $\pm$  20%



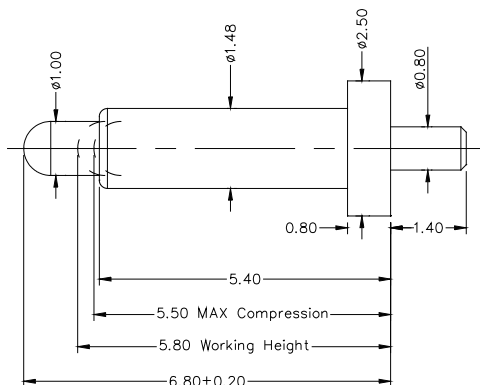
PN: P2859SH01

Length: 6.70 mm  
Working Height: 5.50 mm  
Current: 5 Amps  
Contact Resistance: 50 m $\Omega$   
Spring Force: 110g  $\pm$  20%



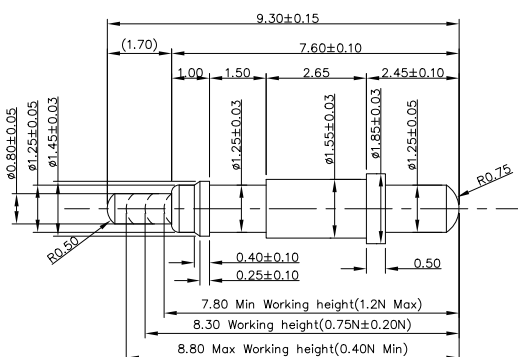
SINGLE  
PIN

SINGLE  
PIN



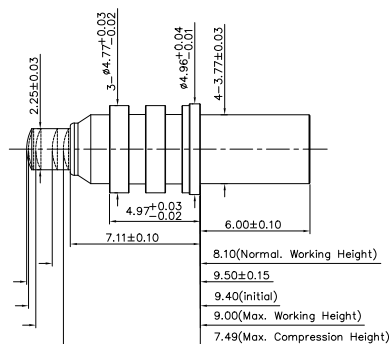
PN: P2871PH01

Length: 6.80 mm  
Working Height: 5.80 mm  
Current: 3 Amps  
Contact Resistance: 50 mΩ  
Spring Force: 110g±20%



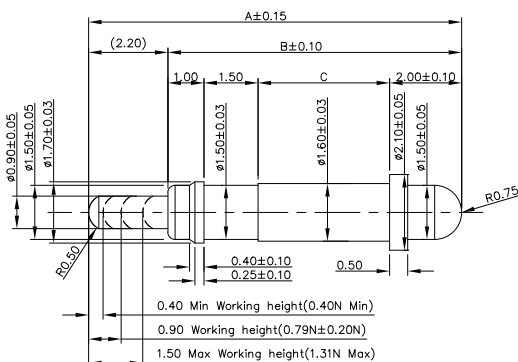
PN: P2631PH03

Length: 9.30 mm  
Working Height: 8.30 mm  
Current: 2 Amps  
Contact Resistance: 100 mΩ  
Spring Force: 80g±20%



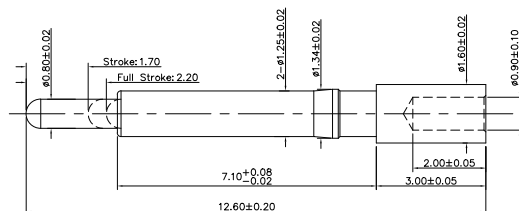
PN: P6123PH03

Length: 9.50 mm  
Working Height: 8.10 mm  
Current: 5 Amps  
Contact Resistance: 50 mΩ  
Spring Force: 180g±20%



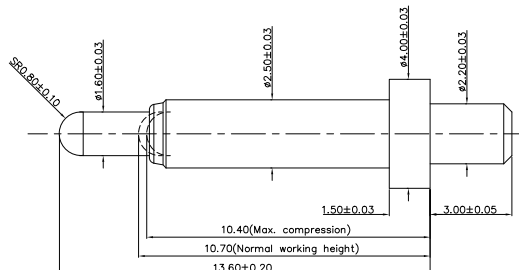
PN: P2683PH09

Length: 10.05 mm  
Working Height: 0.90 mm  
Current: 2 Amps  
Contact Resistance: 50 mΩ  
Spring Force: 60g±20%



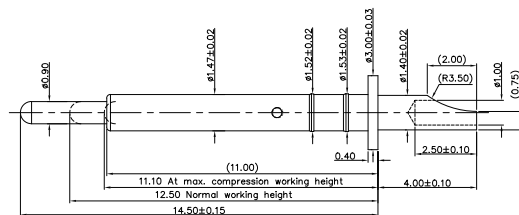
PN: P5773PH02

Length: 12.60 mm  
Working Height: 2.20 mm  
Current: 1 Amp  
Contact Resistance: 100 mΩ  
Spring Force: 80g±20%



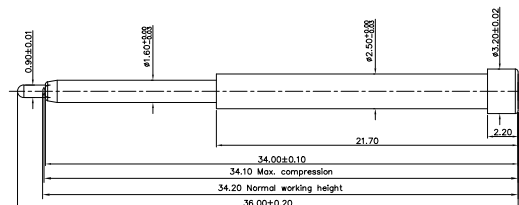
PN: P2783PH01

Length: 13.60 mm  
Working Height: 10.70 mm  
Current: 5 Amps  
Contact Resistance: 50 mΩ  
Spring Force: 90g±20%



PN: P3737SH01

Length: 14.50 mm  
Working Height: 12.50 mm  
Current: 2 Amps  
Contact Resistance: 50 mΩ  
Spring Force: 100g±20%

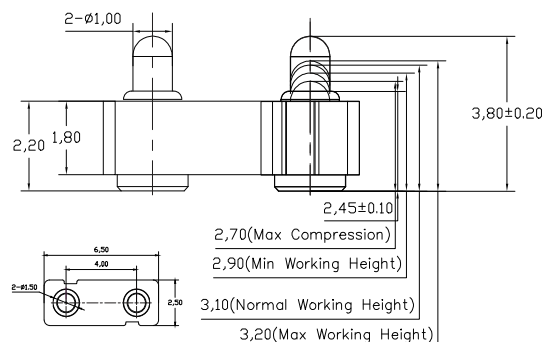


PN: P2977FH01

Length: 36.00 mm  
Working Height: 34.20 mm  
Current: 1 Amp  
Contact Resistance: 50 mΩ  
Spring Force: 100g±20%

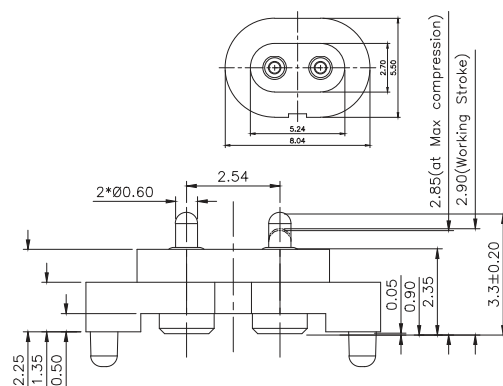
# NON STANDARD CONNECTOR

2 PINS



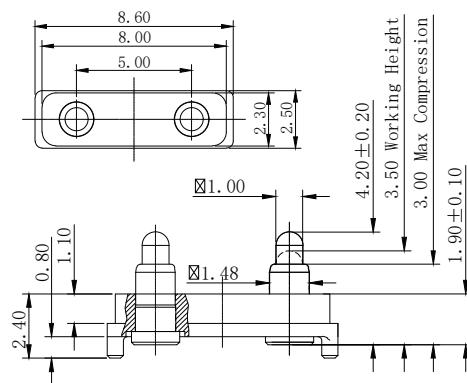
PN: F1106AA01-02A400MR

Length: 3.80 mm  
Working Height: 3.10 mm  
Pitch: 4.00 mm  
Current: 1 Amps  
Contact Resistance: 100 m $\Omega$   
Spring Force: 90g $\pm 20\%$



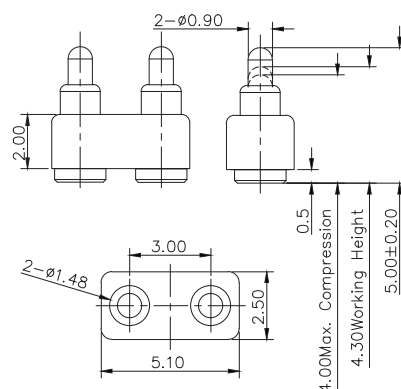
PN: P3013MF01-02F254MR

Length: 3.30 mm  
Working Height: 2.90 mm  
Pitch: 2.54 mm  
Current: 1 Amp  
Contact Resistance: 50 m $\Omega$   
Spring Force: 100g $\pm 20\%$



PN: F969AA01-02A500MR

Length: 4.20 mm  
Working Height: 3.50 mm  
Pitch: 5.00 mm  
Current: 1 Amp  
Contact Resistance: 50 m $\Omega$   
Spring Force: 100g $\pm 20\%$

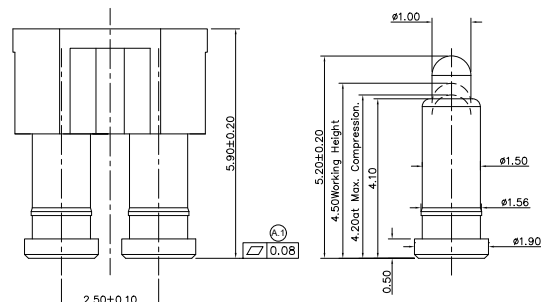


PN: P3708MF01-02F300MR

Length: 5.00 mm  
Working Height: 4.30 mm  
Pitch: 3.00 mm  
Current: 1 Amp  
Contact Resistance: 50 m $\Omega$   
Spring Force: 60g $\pm 20\%$

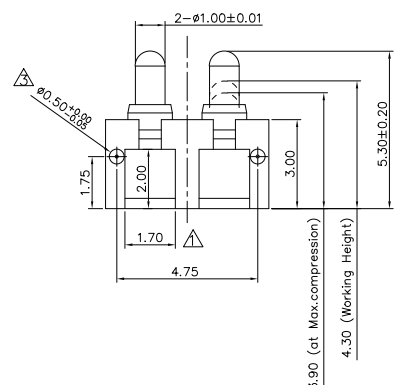
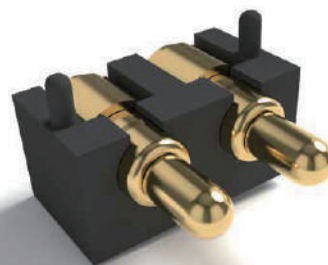
# NON STANDARD CONNECTOR

2 PINS



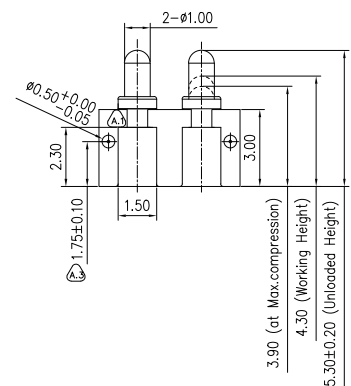
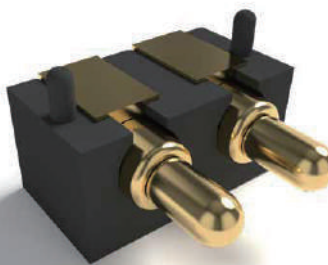
PN: F1835AA01-02A250CR

Length: 5.20 mm  
Working Height: 4.50 mm  
Pitch: 2.50 mm  
Current: 1 Amp  
Contact Resistance: 100 m $\Omega$   
Spring Force: 60g $\pm 20\%$



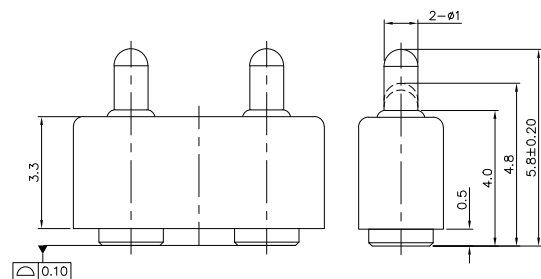
PN: H020M0-H02B250R

Length: 5.30 mm  
Working Height: 4.30 mm  
Pitch: 2.50 mm  
Current: 2.5 Amps  
Contact Resistance: 100 m $\Omega$   
Spring Force: 120g $\pm 20\%$



PN: H036M0-H02C250R

Length: 5.30 mm  
Working Height: 4.30 mm  
Pitch: 2.50 mm  
Current: 1 Amp  
Contact Resistance: 50 m $\Omega$   
Spring Force: 120g $\pm 20\%$

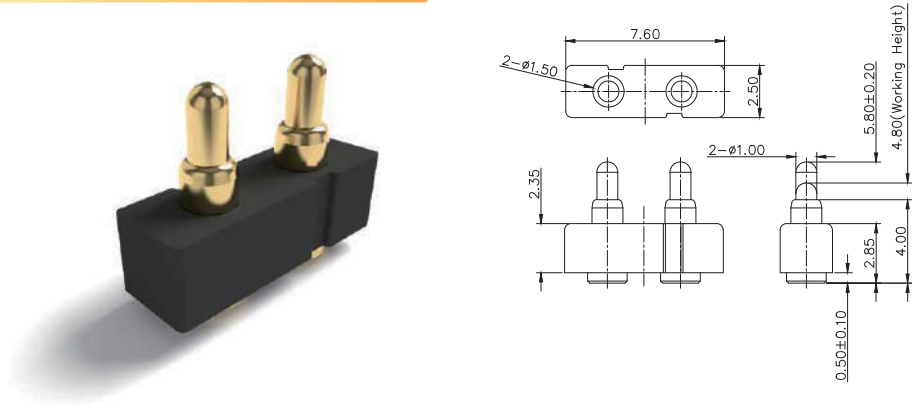


PN: N005M4-02A400HR

Length: 5.80 mm  
Working Height: 4.80 mm  
Pitch: 4.00 mm  
Current: 1 Amp  
Contact Resistance: 50 m $\Omega$   
Spring Force: 110g $\pm 20\%$

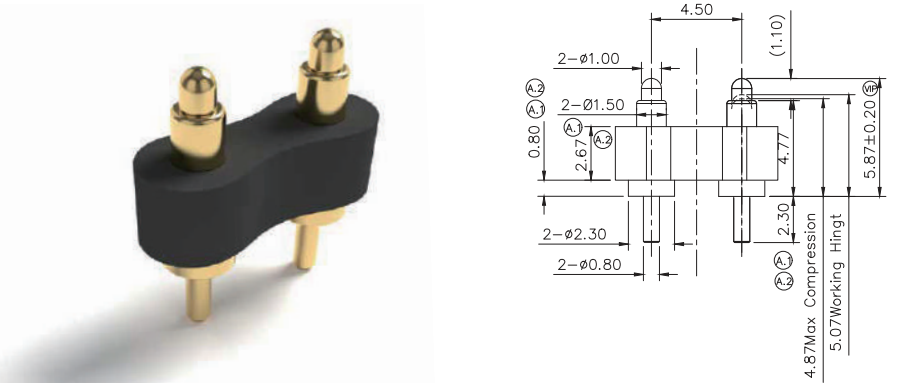
# NON STANDARD CONNECTOR

2 PINS



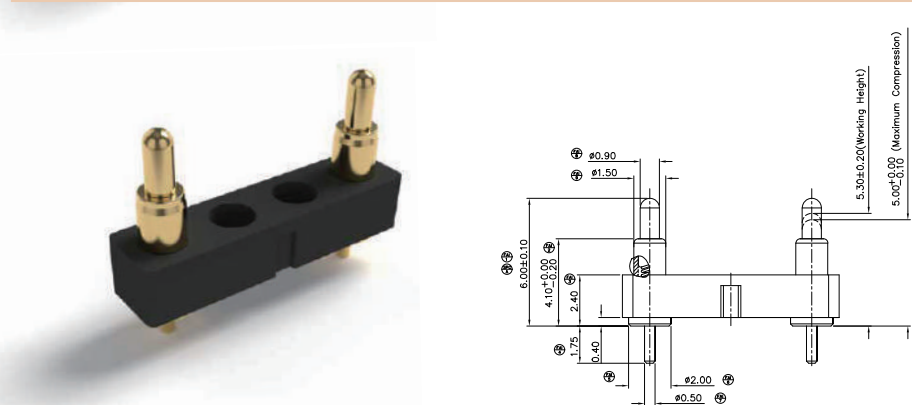
PN: N005M4-02C350MR

Length: 5.80 mm  
Working Height: 4.80 mm  
Pitch: 3.50 mm  
Current: 1 Amp  
Contact Resistance: 50 mΩ  
Spring Force: 110g ± 20%



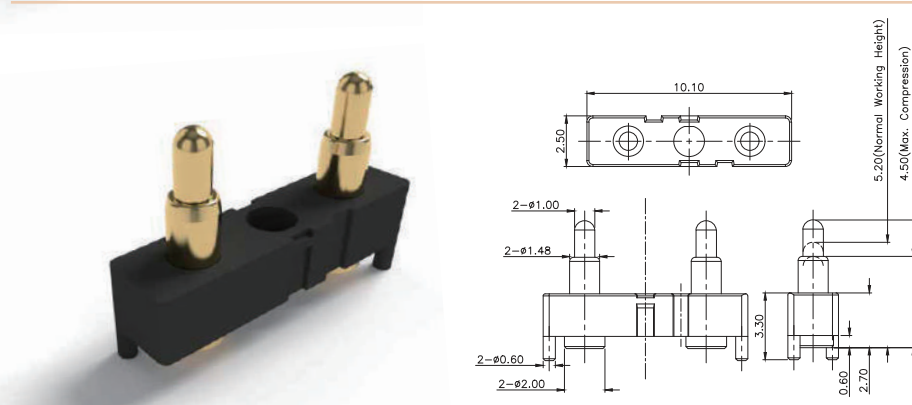
PN: P2688MP01-02G450MR

Length: 5.87 mm  
Working Height: 5.07 mm  
Pitch: 4.50 mm  
Current: 1 Amp  
Contact Resistance: 50 mΩ  
Spring Force: 110g ± 20%



PN: P3721MP01-02A762HR

Length: 6.00 mm  
Working Height: 5.30 mm  
Pitch: 2.54 mm  
Current: 2.5 Amps  
Contact Resistance: 30 mΩ  
Spring Force: 50g ± 20%

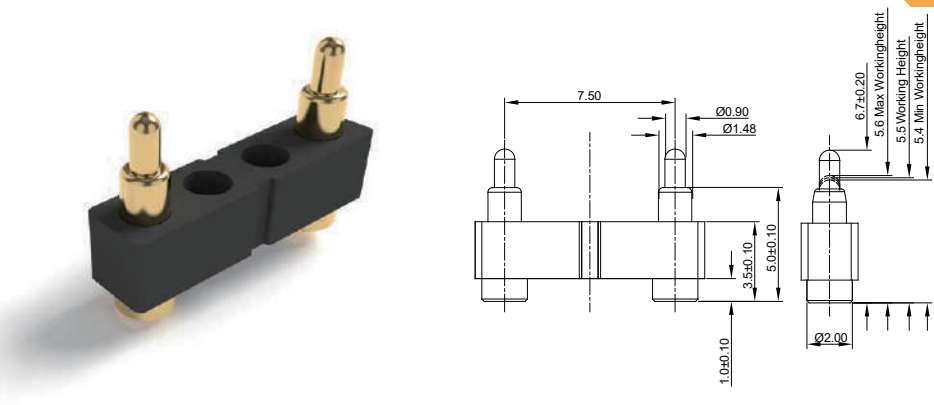


PN: P3037MF01-03A300HB

Length: 6.30 mm  
Working Height: 5.20 mm  
Pitch: 6.00 mm  
Current: 1 Amp  
Contact Resistance: 50 mΩ  
Spring Force: 110g ± 20%

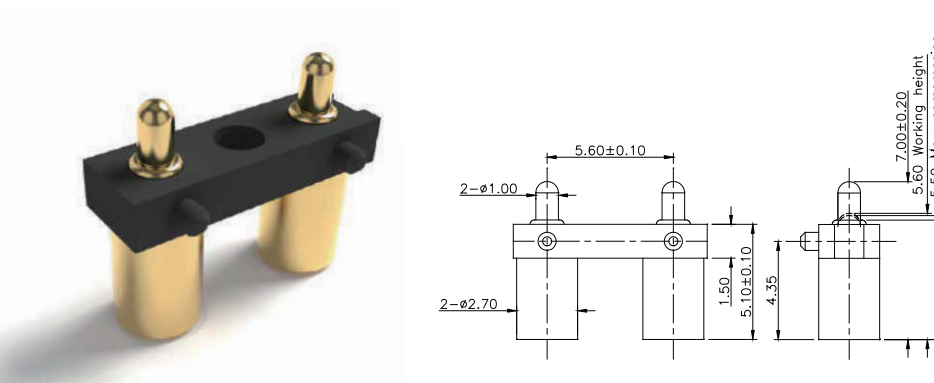
# NON STANDARD CONNECTOR

2 PINS



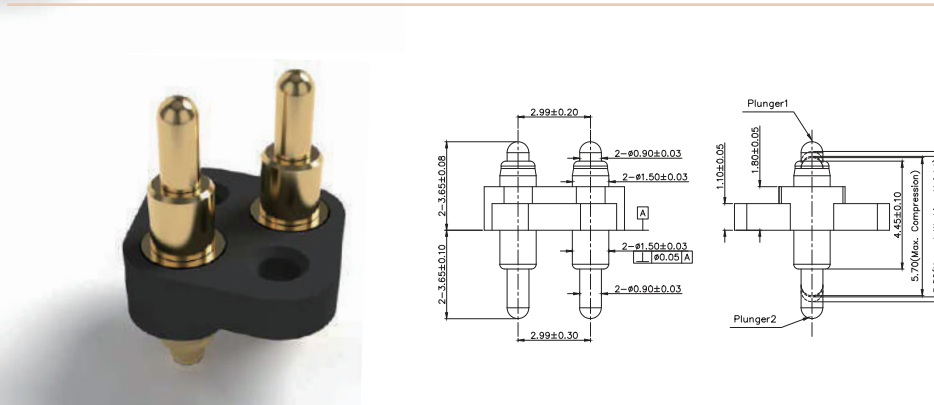
PN: F1615AA02-04B250MR

Length: 6.70 mm  
Working Height: 5.50 mm  
Pitch: 7.50 mm  
Current: 1 Amp  
Contact Resistance: 50 mΩ  
Spring Force: 110g ± 20%



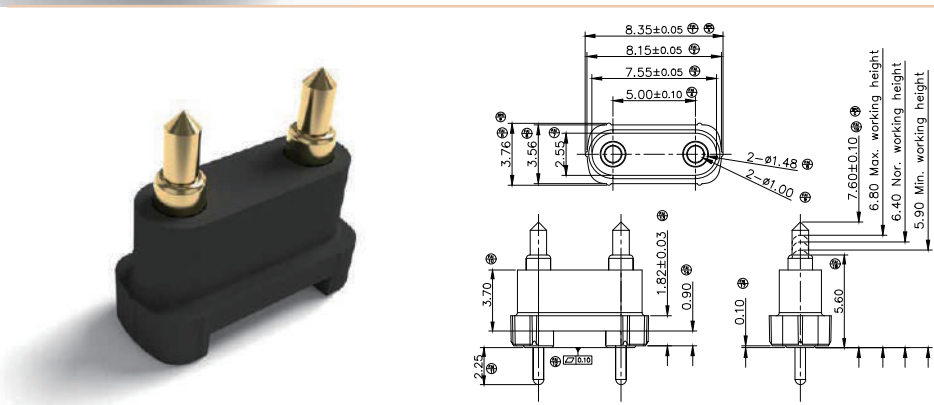
PN: P2723MF01-03B280HB

Length: 7.00 mm  
Working Height: 5.60 mm  
Pitch: 5.60 mm  
Current: 3 Amps  
Contact Resistance: 50 mΩ  
Spring Force: 130g ± 25%



PN: P5121MD10-02A324HB

Length: 7.30 mm  
Working Height: 5.80 mm  
Pitch: 2.99 mm  
Current: 2 Amps  
Contact Resistance: 50 mΩ  
Spring Force: 85g ± 15g



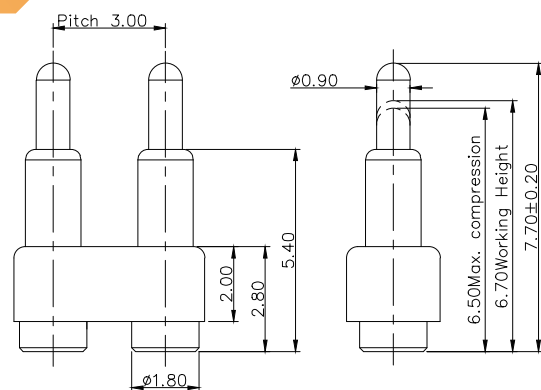
PN: P2388MP10-02G500HR

Length: 7.60 mm  
Working Height: 6.40 mm  
Pitch: 5.00 mm  
Current: 1 Amp  
Contact Resistance: 50 mΩ  
Spring Force: 120g ± 20%



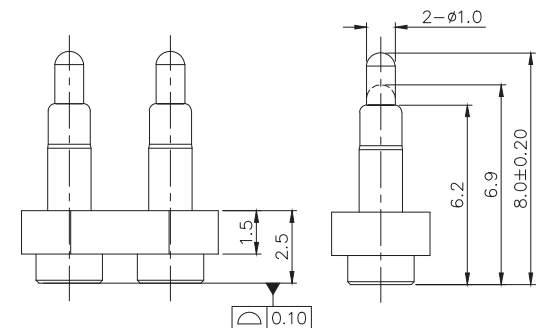
# NON STANDARD CONNECTOR

2 PINS



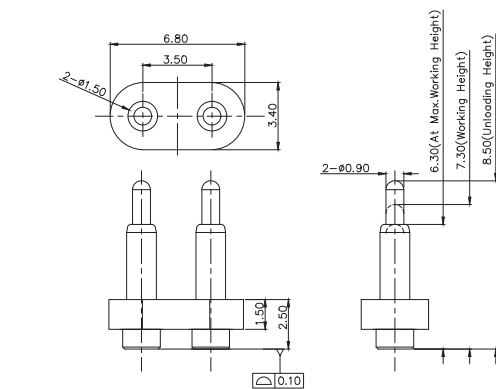
PN: F259AA02-02300MR

Length: 7.70 mm  
Working Height: 6.70 mm  
Pitch: 3.00 mm  
Current: 1 Amp  
Contact Resistance: 50 m $\Omega$   
Spring Force: 60g  $\pm 20\%$



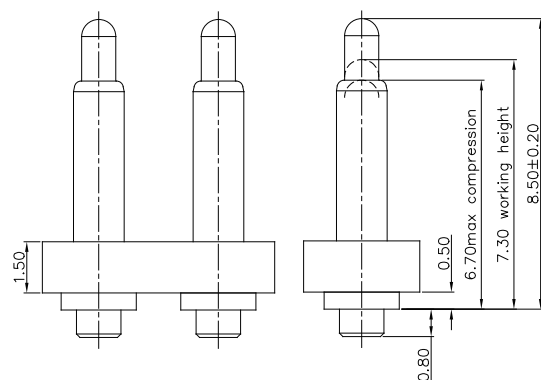
PN: N001M2-02D350MR

Length: 8.00 mm  
Working Height: 6.90 mm  
Pitch: 3.50 mm  
Current: 1 Amp  
Contact Resistance: 50 m $\Omega$   
Spring Force: 65g  $\pm 20\%$



PN: H015M1-02D350MR

Length: 8.50 mm  
Working Height: 7.30 mm  
Pitch: 3.50 mm  
Current: 1 Amp  
Contact Resistance: 50 m $\Omega$   
Spring Force: 100g  $\pm 20\%$

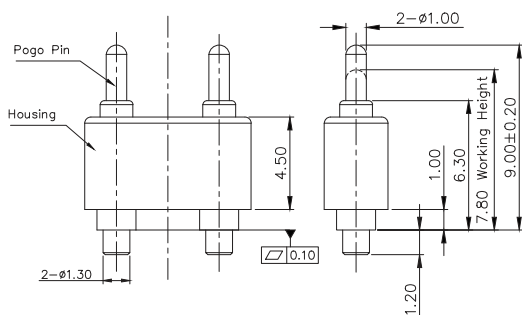


PN: P1089AA01-02D350MR

Length: 8.50 mm  
Working Height: 7.30 mm  
Pitch: 3.50 mm  
Current: 1.5 Amps  
Contact Resistance: 50 m $\Omega$   
Spring Force: 120g  $\pm 20\%$

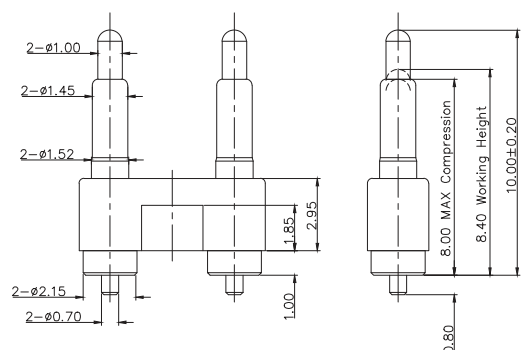
# NON STANDARD CONNECTOR

2 PINS



PN: N002M10-02B500HR

Length: 9.00 mm  
Working Height: 7.80 mm  
Pitch: 5.00 mm  
Current: 1 Amp  
Contact Resistance: 50 m $\Omega$   
Spring Force: 100g  $\pm 20\%$



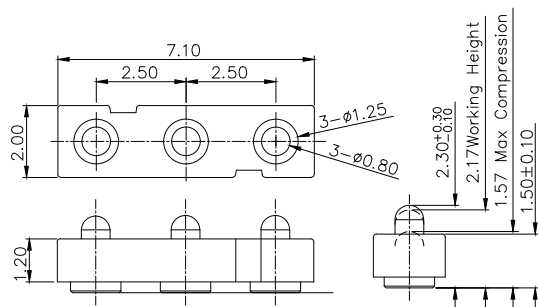
PN: P2780MF01-02A508MR

Length: 10.00 mm  
Working Height: 8.40 mm  
Pitch: 5.08 mm  
Current: 1 Amp  
Contact Resistance: 50 m $\Omega$   
Spring Force: 100g  $\pm 20\%$



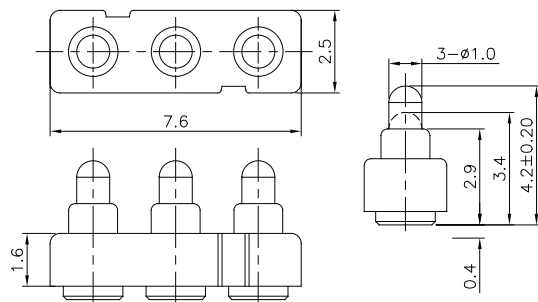
# NON STANDARD CONNECTOR

3 PINS



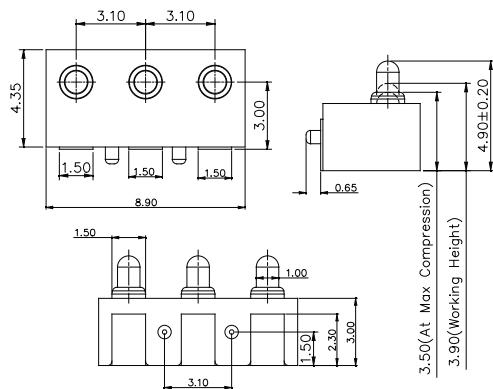
PN: F1106AA01-02A400MR

Length: 2.30 mm  
Working Height: 2.17 mm  
Pitch: 2.50 mm  
Current: 1 Amp  
Contact Resistance: 100 mΩ  
Spring Force: 80g ± 20%



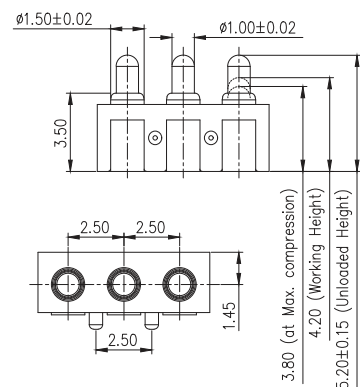
PN: N103M5-03G250MR

Length: 4.20 mm  
Working Height: 3.40 mm  
Pitch: 2.50 mm  
Current: 1 Amp  
Contact Resistance: 50 mΩ  
Spring Force: 120g ± 20%



PN: H003M7-H03A310R

Length: 4.90 mm  
Working Height: 3.90 mm  
Pitch: 3.10 mm  
Current: 1 Amp  
Contact Resistance: 50 mΩ  
Spring Force: 120g ± 20%

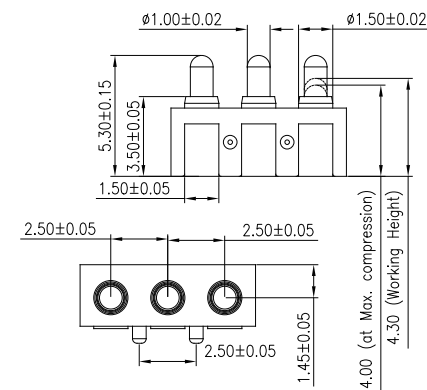
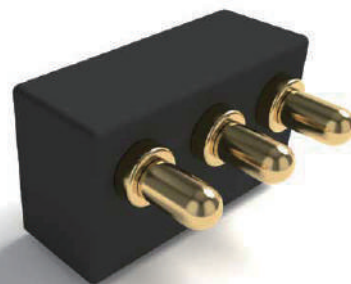


PN: H003M1-H03B250RR

Length: 5.20 mm  
Working Height: 4.20 mm  
Pitch: 2.50 mm  
Current: 1 Amp  
Contact Resistance: 50 mΩ  
Spring Force: 120g ± 20%

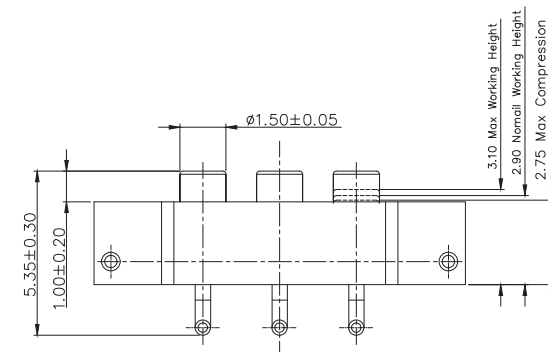
# NON STANDARD CONNECTOR

3 PINS



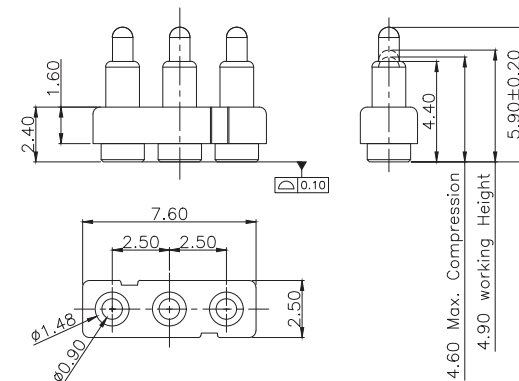
PN: H003M3-H03B250R

Length: 5.30 mm  
Working Height: 4.30 mm  
Pitch: 2.50 mm  
Current: 1 Amps  
Contact Resistance: 50 mΩ  
Spring Force: 120g ± 20%



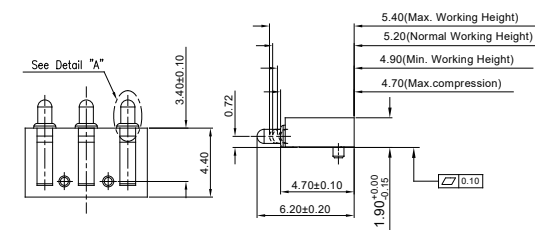
PN: P3309MF01-03R250MR

Length: 5.30 mm  
Working Height: 3.10 mm  
Pitch: 2.50 mm  
Current: 1 Amp  
Contact Resistance: 100 mΩ  
Spring Force: 100g ± 20%



PN: F515AA01-03250MR

Length: 5.90 mm  
Working Height: 4.90 mm  
Pitch: 2.50 mm  
Current: 1 Amp  
Contact Resistance: 50 mΩ  
Spring Force: 120g ± 20%

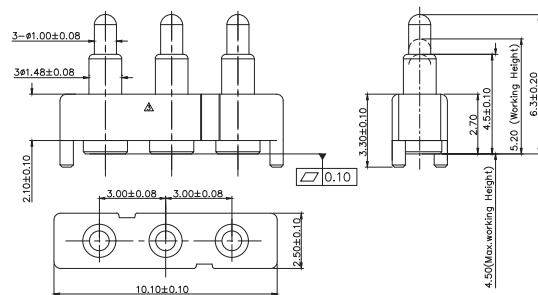


PN: R175AA09-03265HR

Length: 6.20 mm  
Working Height: 5.20 mm  
Pitch: 4.90 mm  
Current: 2.5 Amps  
Contact Resistance: 50 mΩ  
Spring Force: 120g ± 20%

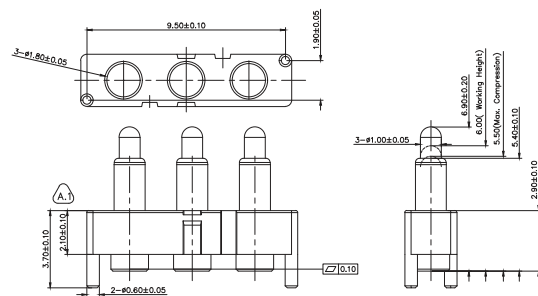
# NON STANDARD CONNECTOR

3 PINS



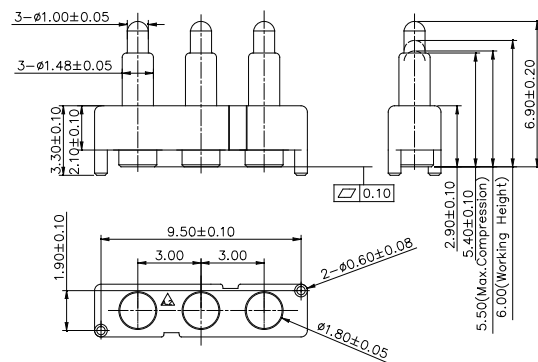
PN: H179M0-03A300MR

Length: 6.30 mm  
Working Height: 5.20 mm  
Pitch: 3.00 mm  
Current: 1 Amp  
Contact Resistance: 50 mΩ  
Spring Force: 110g ± 20%



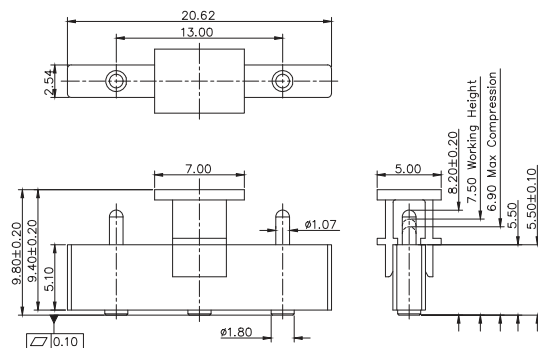
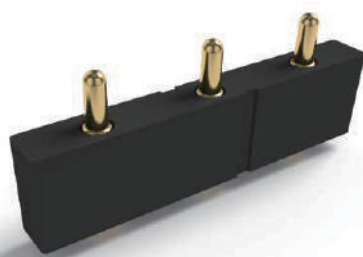
PN: F1767AA01-03A300MR

Length: 6.90 mm  
Working Height: 6.00 mm  
Pitch: 3.00 mm  
Current: 1 Amp  
Contact Resistance: 50 mΩ  
Spring Force: 100g ± 20%



PN: N042M4-03A300MR

Length: 6.90 mm  
Working Height: 6.00 mm  
Pitch: 3.00 mm  
Current: 1 Amp  
Contact Resistance: 50 mΩ  
Spring Force: 60g ± 20g

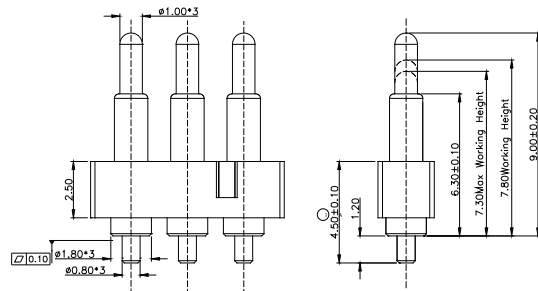


PN: F1712AA02-03D650MR

Length: 8.20 mm  
Working Height: 7.50 mm  
Pitch: 6.50 mm  
Current: 1 Amp  
Contact Resistance: 100 mΩ  
Spring Force: 85g ± 20%

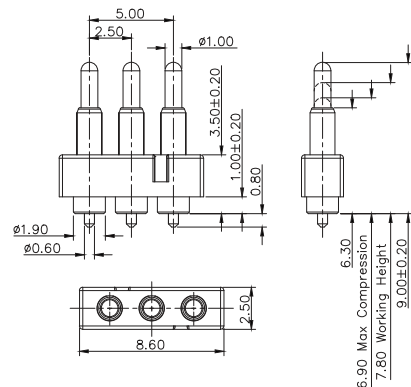
# NON STANDARD CONNECTOR

3 PINS



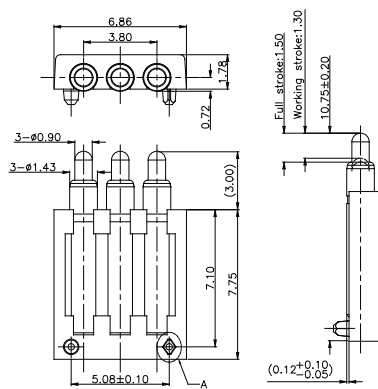
PN: P1500AA01-03C250MR

Length: 9.00 mm  
Working Height: 7.80 mm  
Pitch: 2.50 mm  
Current: 1 Amp  
Contact Resistance: 50 mΩ  
Spring Force: 60g ± 20%



PN: P2223MP01-03C250MR

Length: 9.00 mm  
Working Height: 7.80 mm  
Pitch: 2.50 mm  
Current: 1 Amp  
Contact Resistance: 50 mΩ  
Spring Force: 100g ± 20%



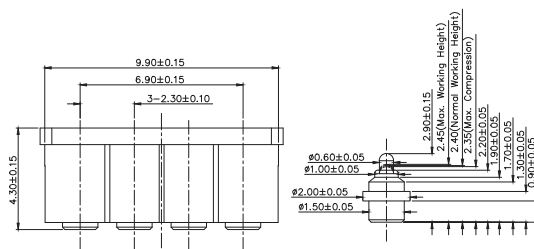
PN: R1332AA01-03B190RR

Length: 10.75 mm  
Working Height: 9.45 mm  
Pitch: 1.90 mm  
Current: 1 Amp  
Contact Resistance: 50 mΩ  
Spring Force: 110g ± 20%



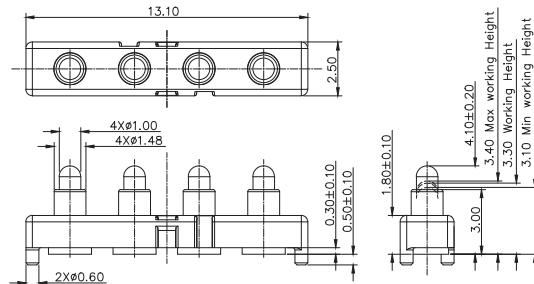
# NON STANDARD CONNECTOR

4 PINS



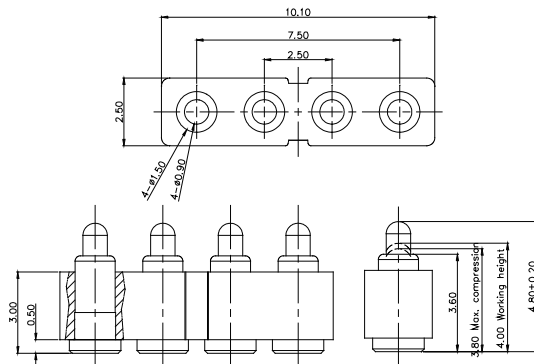
PN: P5331MF02-04A230CR

Length: 2.90 mm  
Working Height: 2.40 mm  
Pitch: 2.30 mm  
Current: 1 Amp  
Contact Resistance: 50 mΩ  
Spring Force: 75g ± 15g



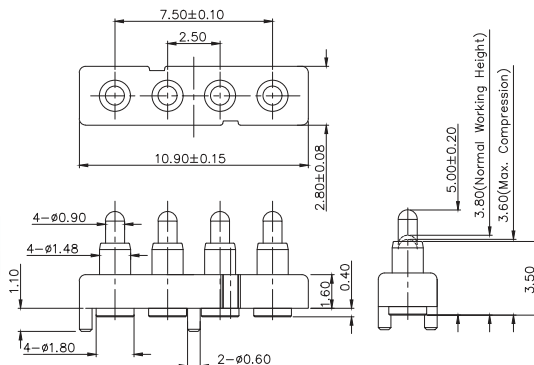
PN: F1853AA02-04F300MR

Length: 4.10 mm  
Working Height: 3.30 mm  
Pitch: 3.00 mm  
Current: 1 Amp  
Contact Resistance: 50 mΩ  
Spring Force: 80g ± 20%



PN: P3063MF01-04B250MR

Length: 4.80 mm  
Working Height: 4.00 mm  
Pitch: 2.50 mm  
Current: 2 Amps  
Contact Resistance: 50 mΩ  
Spring Force: 90g ± 20%

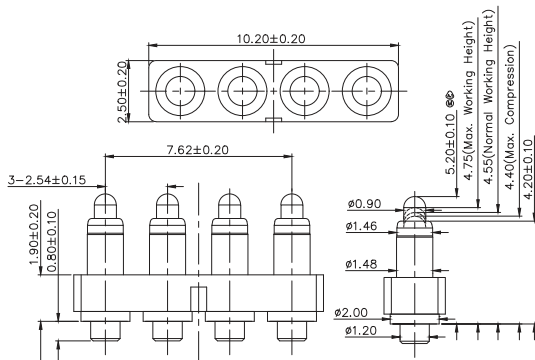


PN: P2808MF01-04D250MR

Length: 5.00 mm  
Working Height: 3.80 mm  
Pitch: 2.50 mm  
Current: 2 Amps  
Contact Resistance: 50 mΩ  
Spring Force: 90g ± 20g

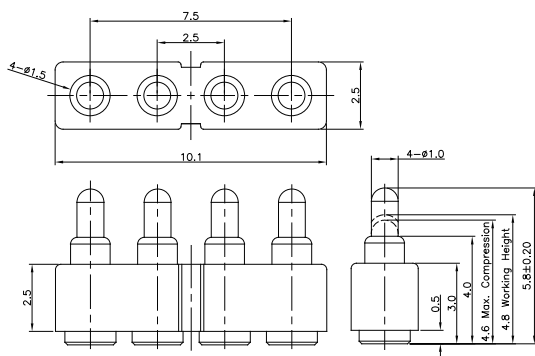
# NON STANDARD CONNECTOR

4 PINS



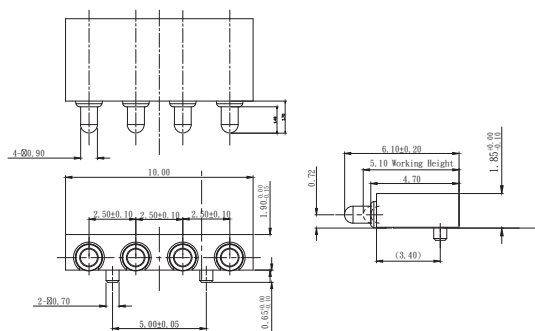
PN: P3859MP01-04A254MR

Length: 5.20 mm  
Working Height: 4.55 mm  
Pitch: 2.54 mm  
Current: 1 Amp  
Contact Resistance: 50 mΩ  
Spring Force: 55g ± 10g



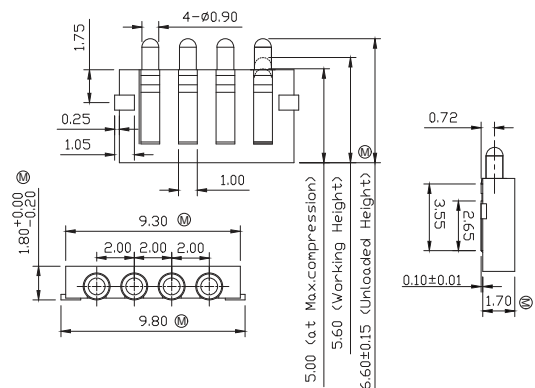
PN: N005M4-04B250MR

Length: 5.80 mm  
Working Height: 4.80 mm  
Pitch: 2.50 mm  
Current: 1 Amp  
Contact Resistance: 50 mΩ  
Spring Force: 110g ± 20%



PN: R175AA00-04250RR

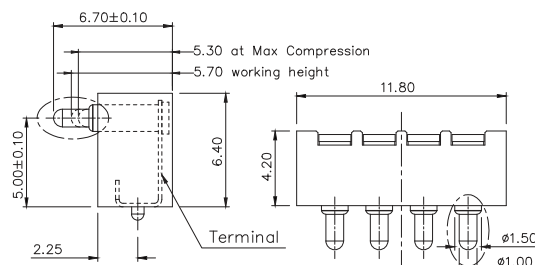
Length: 6.10 mm  
Working Height: 5.10 mm  
Pitch: 2.50 mm  
Current: 1 Amp  
Contact Resistance: 50 mΩ  
Spring Force: 110g ± 20%



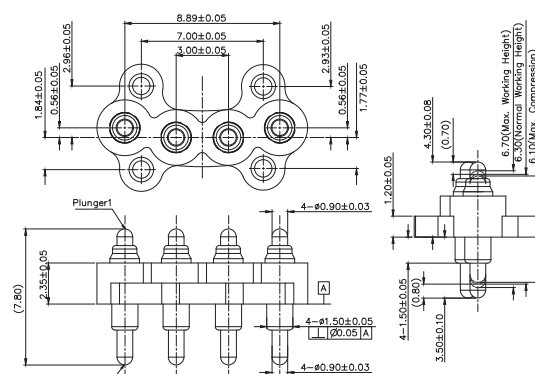
PN: H016M0-H04A200R

Length: 6.60 mm  
Working Height: 5.60 mm  
Pitch: 2.00 mm  
Current: 1 Amp  
Contact Resistance: 50 mΩ  
Spring Force: 110g ± 20%

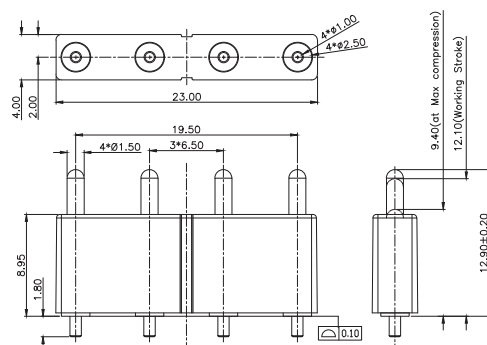
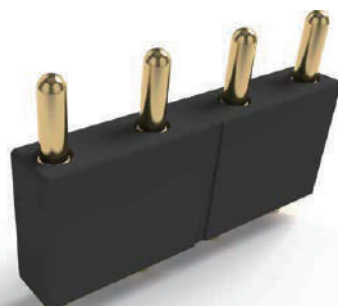
## 4 PINS



Length:	6.70 mm
Working Height:	5.70 mm
Pitch:	2.50 mm
Current:	1 Amp
Contact Resistance:	50 mΩ
Spring Force:	120g ± 20%

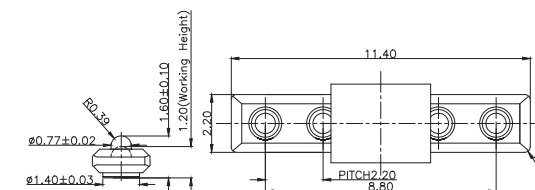


Length:	7.80 mm
Working Height:	6.30 mm
Pitch:	3.00 mm
Current:	1 Amp
Contact Resistance:	30 mΩ
Spring Force:	85g ± 15g

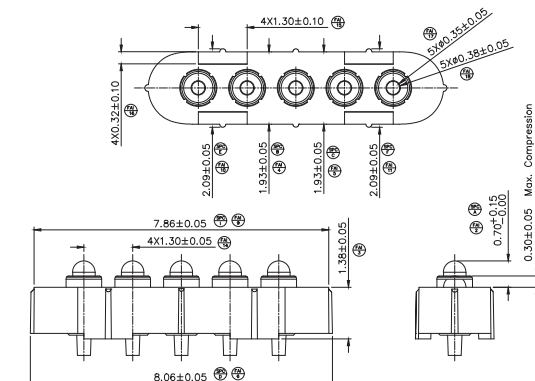


Length:	12.90 mm
Working Height:	12.10 mm
Pitch:	6.50 mm
Current:	1 Amp
Contact Resistance:	50 mΩ
Spring Force:	105g ± 20g

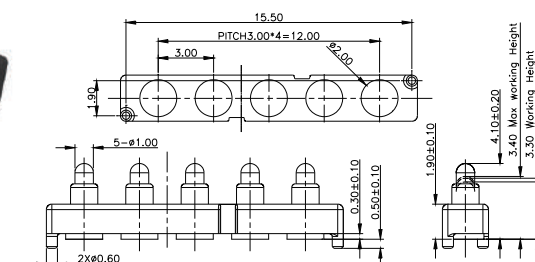
## 5 PINS



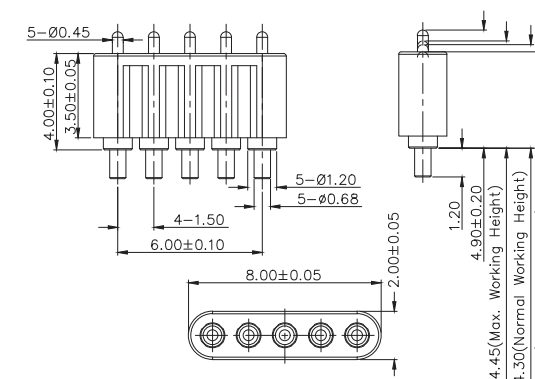
Length:	1.60 mm
Working Height:	1.20 mm
Pitch:	2.20 mm
Current:	1 Amp
Contact Resistance:	100 mΩ
Spring Force:	60g ± 20g



Length:	2.08 mm
Working Height:	1.68 mm
Pitch:	1.30 mm
Current:	1 Amp
Contact Resistance:	50 mΩ
Spring Force:	100g ± 20g



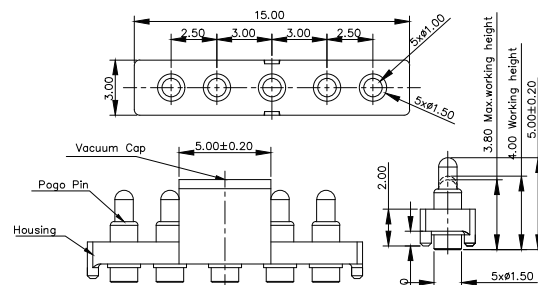
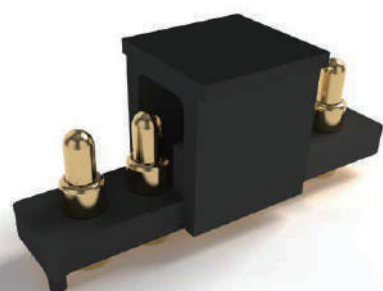
Length:	4.10 mm
Working Height:	3.30 mm
Pitch:	3.00 mm
Current:	1 Amp
Contact Resistance:	50 mΩ
Spring Force:	80g ± 20%



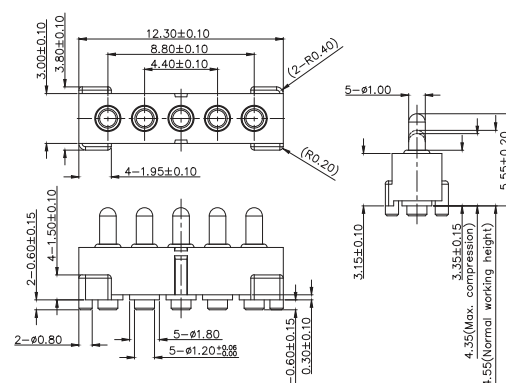
Length:	4.90 mm
Working Height:	4.30 mm
Pitch:	1.50 mm
Current:	2 Amps
Contact Resistance:	50 mΩ
Spring Force:	110g ± 20%



## 5 PINS



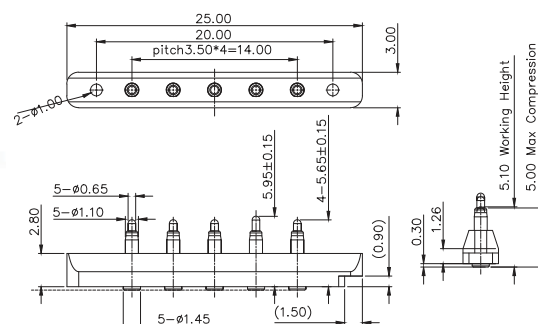
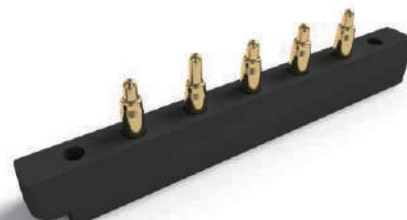
Length:	5.00 mm
Working Height:	4.00 mm
Pitch:	2.50 mm
Current:	1 Amp
Contact Resistance:	100 mΩ
Spring Force:	80g ± 20g



**PN: P2761MP01-05E220MR**

■

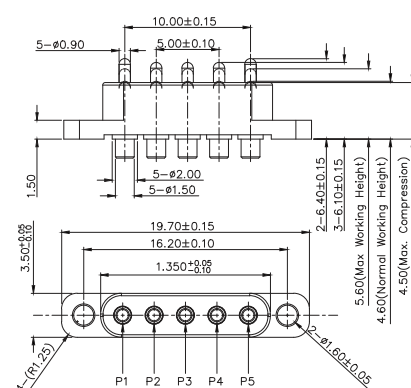
<b>Length:</b>	<b>5.55 mm</b>
<b>Working Height:</b>	<b>4.55 mm</b>
<b>Pitch:</b>	<b>2.20 mm</b>
<b>Current:</b>	<b>1 Amp</b>
<b>Contact Resistance:</b>	<b>50 mΩ</b>
<b>Spring Force:</b>	<b>80g ± 20g</b>



**PN: P5362MF01-05A350MR**

■

<b>Length:</b>	<b>5.65 / 5.95 mm</b>
<b>Working Height:</b>	<b>5.10 mm</b>
<b>Pitch:</b>	<b>3.50 mm</b>
<b>Current:</b>	<b>2 Amps</b>
<b>Contact Resistance:</b>	<b>50 mΩ</b>
<b>Spring Force:</b>	<b>70g ± 20g</b>

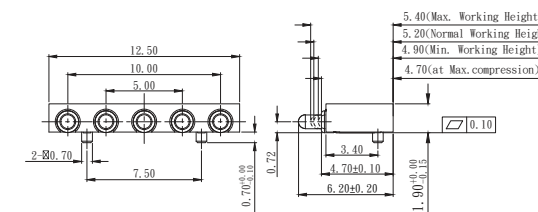


**PN: P2673MF02-05R250HT**

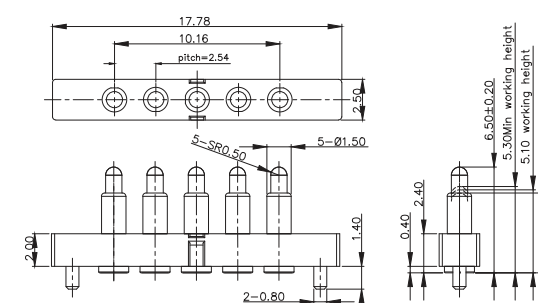
■

<b>Length:</b>	<b>6.10/6.41 mm</b>
<b>Working Height:</b>	<b>4.60 mm</b>
<b>Pitch:</b>	<b>2.50 mm</b>
<b>Current:</b>	<b>2 Amps</b>
<b>Contact Resistance:</b>	<b>50 mΩ</b>
<b>Spring Force:</b>	<b>150g ± 20%</b>

## 5 PINS



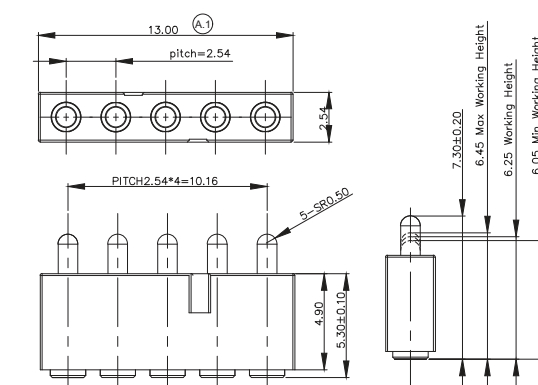
Length:	6.20 mm
Working Height:	5.20 mm
Pitch:	2.50 mm
Current:	2 Amps
Contact Resistance:	50 mΩ
Spring Force:	120g ± 20%



**PN: P2037MF01-05J254MR**

■

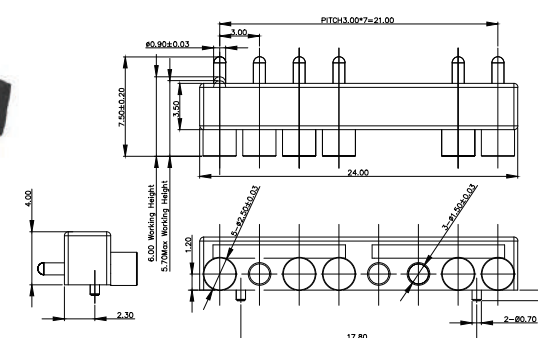
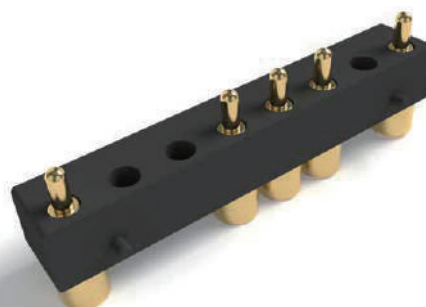
<b>Length:</b>	<b>6.50 mm</b>
<b>Working Height:</b>	<b>5.10 mm</b>
<b>Pitch:</b>	<b>2.54 mm</b>
<b>Current:</b>	<b>2 Amps</b>
<b>Contact Resistance:</b>	<b>50 mΩ</b>
<b>Spring Force:</b>	<b>90g ± 20%</b>



PN: P2315MF01-05L254MR

■

Length:	7.30 mm
Working Height:	6.25 mm
Pitch:	2.54 mm
Current:	5 Amps
Contact Resistance:	20 mΩ
Spring Force:	80g ± 20%

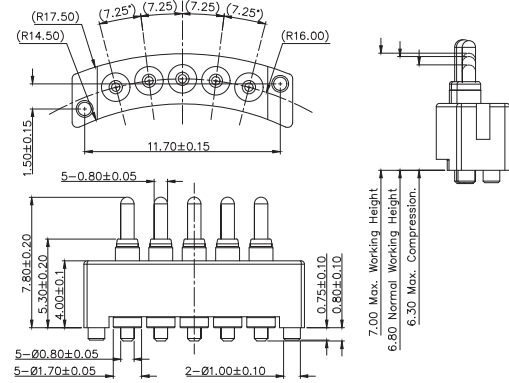


PN: F1601AA05-08G300HB

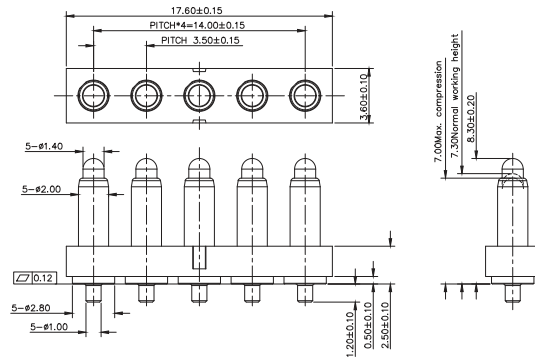
■

Length:	7.50 mm
Working Height:	6.00 mm
Pitch:	3.00 mm
Current:	2 Amps
Contact Resistance:	50 mΩ
Spring Force:	120g ± 20%

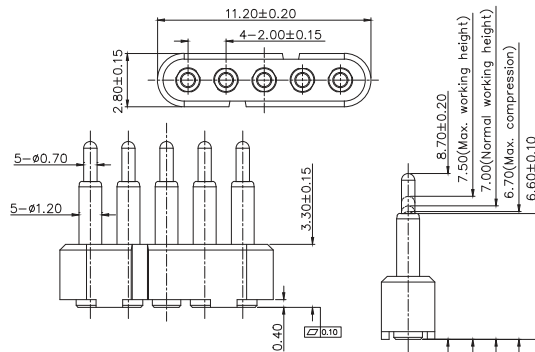
## 5 PINS



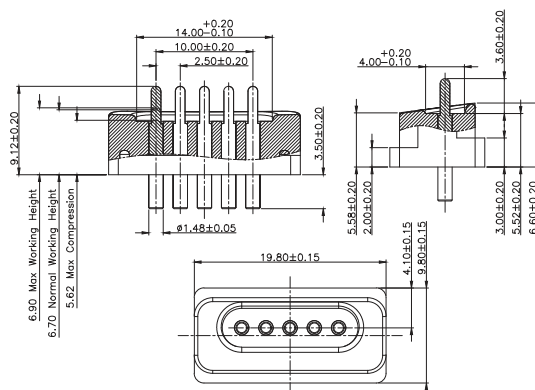
Length:	7.80 mm
Working Height:	6.80 mm
Pitch:	2.02 mm
Current:	2 Amps
Spring Force:	30g ± 10g



Length: 8.30 mm  
Working Height: 7.30 mm  
Pitch: 3.50 mm  
Current: 3 Amps  
Contact Resistance: 50 mΩ  
Spring Force: 95g ± 20g

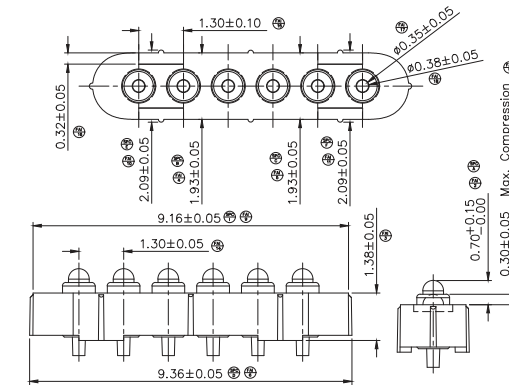


Length: 8.70 mm  
Working Height: 7.00 mm  
Pitch: 2.00 mm  
Current: 3~5 Amps  
Contact Resistance: 50 mΩ  
Spring Force: 120g ± 20%

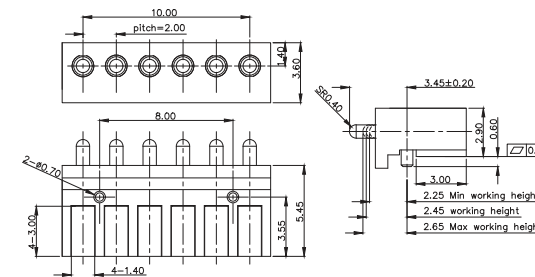


Length:	9.12 mm
Working Height:	6.70 mm
Pitch:	2.50 mm
Current:	1 Amp
Spring Force:	100g $\pm$ 20g

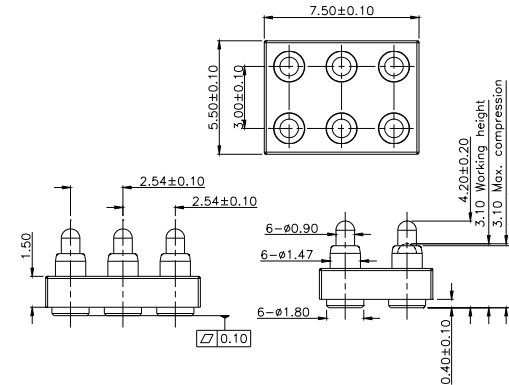
## 6 PINS



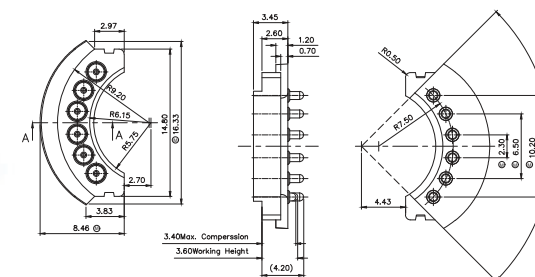
Length:	2.08 mm
Working Height:	1.68 mm
Pitch:	1.30 mm
Current:	1 Amp
Contact Resistance:	100 mΩ
Spring Force:	50g ± 20g



Length:	3.45 mm
Working Height:	2.45 mm
Pitch:	2.00 mm
Current:	2 Amps
Contact Resistance:	50 mΩ
Spring Force:	70g ± 20%



Length:	4.20 mm
Working Height:	3.10 mm
Pitch:	2.54 mm
Current:	1 Amp
Contact Resistance:	50 mΩ
Spring Force:	80g ± 20%

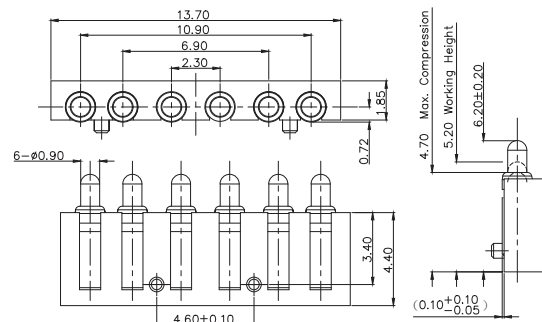


Length:	4.20 mm
Working Height:	3.60 mm
Pitch:	1.85 mm
Current:	1 Amp
Contact Resistance:	50 mΩ
Spring Force:	90g ± 20%



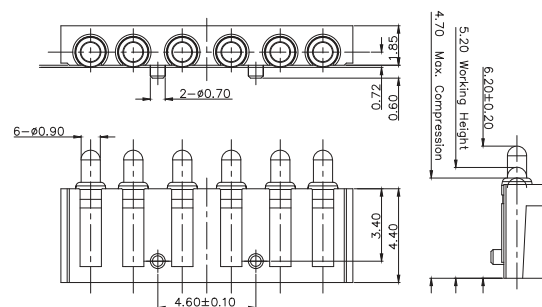
# NON STANDARD CONNECTOR

6 PINS



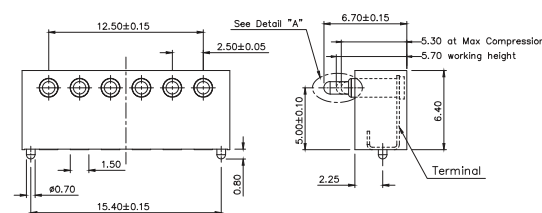
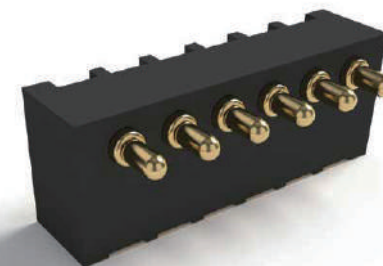
PN: R175AA05-06B200RR

Length: 6.20 mm  
Working Height: 5.20 mm  
Pitch: 2.30 mm  
Current: 1.5 Amps  
Contact Resistance: 50 mΩ  
Spring Force: 120g ± 20%



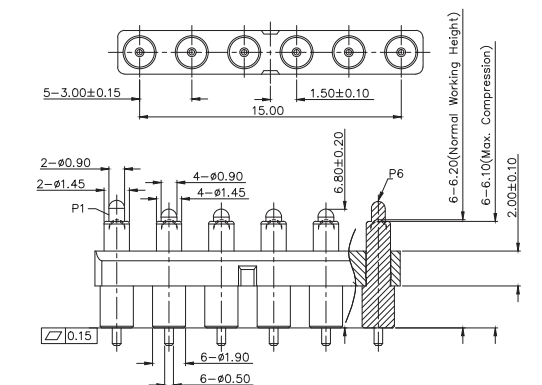
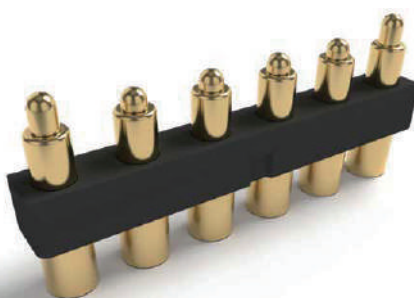
PN: R175AA08-06B200RR

Length: 6.20 mm  
Working Height: 5.20 mm  
Pitch: 2.30 mm  
Current: 2 Amps  
Contact Resistance: 50 mΩ  
Spring Force: 120g ± 20%



PN: R035AA06-06250RR

Length: 6.70 mm  
Working Height: 5.70 mm  
Pitch: 2.50 mm  
Current: 1 Amp  
Contact Resistance: 50 mΩ  
Spring Force: 120g ± 20%

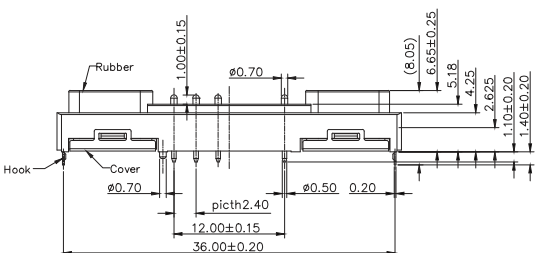


PN: P3588MP02-06B300MR

Length: 6.80 / 7.30 mm  
Working Height: 6.20 mm  
Pitch: 3.00 mm  
Current: 2 Amps  
Contact Resistance: 50 mΩ  
Spring Force: 110g ± 20%

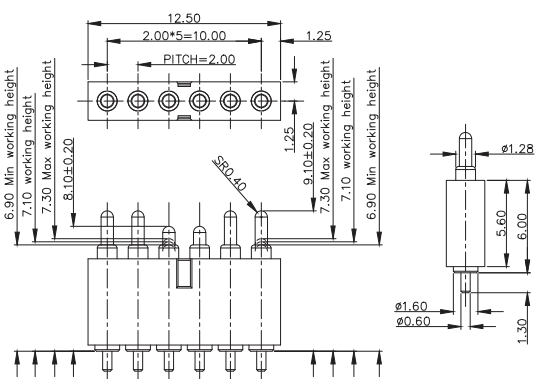
# NON STANDARD CONNECTOR

6 PINS



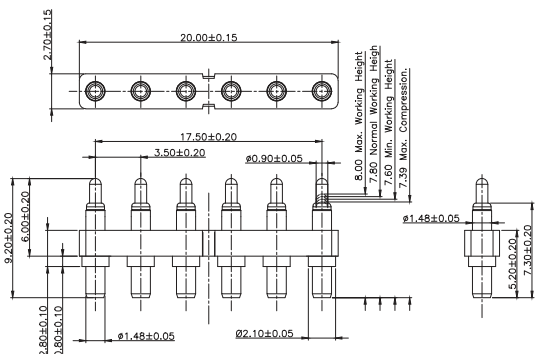
PN: P2197MP01-06C240MR

Length: 7.28 mm  
Working Height: 6.48 mm  
Pitch: 2.40 mm  
Current: 2 Amps  
Contact Resistance: 50 mΩ  
Spring Force: 90g ± 20%



PN: P2294MP01-06E200MR

Length: 8.10 / 9.10 mm  
Working Height: 7.10 mm  
Pitch: 2.00 mm  
Current: 2 Amps  
Contact Resistance: 50 mΩ  
Spring Force: 70g ± 20%



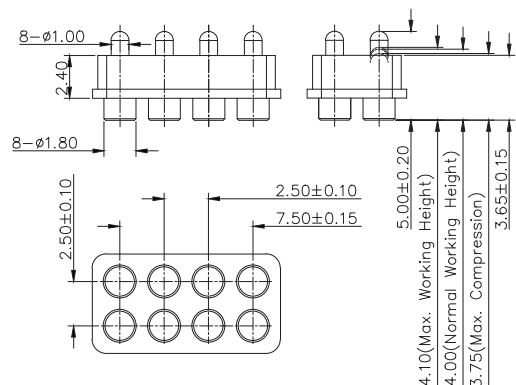
PN: P3783MP01-06L350MR

Length: 9.20 mm  
Working Height: 7.80 mm  
Pitch: 3.50 mm  
Current: 5 Amps  
Contact Resistance: 50 mΩ  
Spring Force: 100g ± 20g



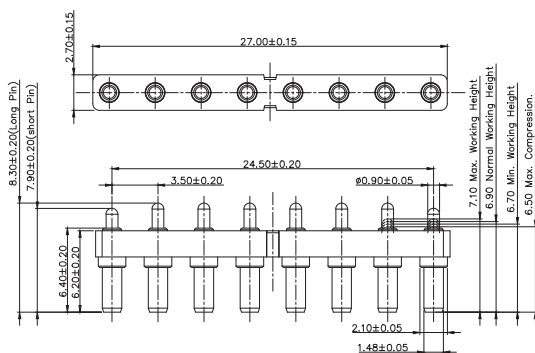
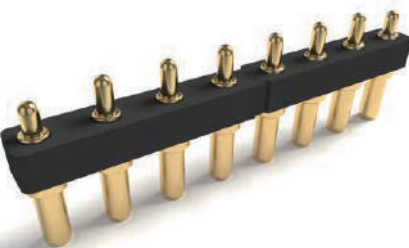
# NON STANDARD CONNECTOR

8 PINS



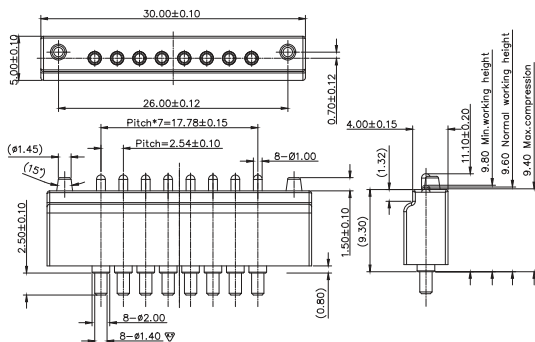
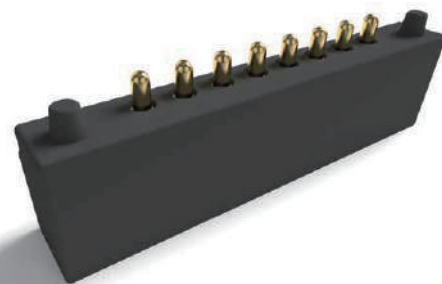
PN: P3728MF01-08P250HR

Length: 5.00 mm  
Working Height: 4.00 mm  
Pitch: 2.50 mm  
Current: 1 Amp  
Contact Resistance: 50 mΩ  
Spring Force: 80g ± 20g



PN: P2613MP01-08E350MR

Length: 7.90 / 8.30 mm  
Working Height: 6.90 mm  
Pitch: 3.50 mm  
Current: 2 Amps  
Contact Resistance: 50 mΩ  
Spring Force: 110g ± 20g

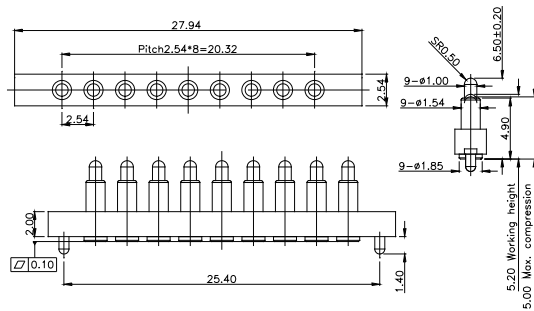


PN: P1933AA01-08C254HT

Length: 11.10 mm  
Working Height: 9.60 mm  
Pitch: 2.54 mm  
Current: 2 Amps  
Contact Resistance: 50 mΩ  
Spring Force: 120g ± 20g

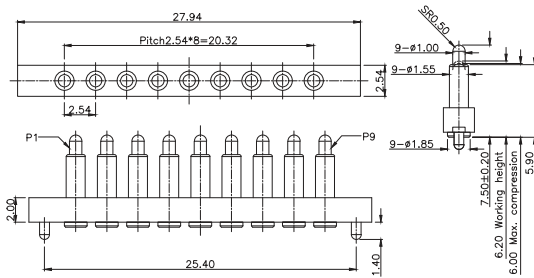
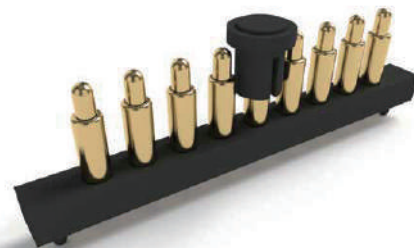
# NON STANDARD CONNECTOR

9-12 PINS



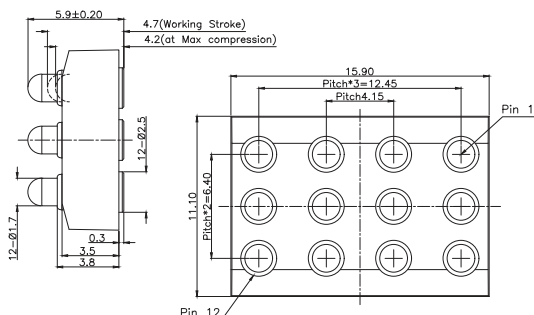
PN: P2839MF01-09F254MR

Length: 6.50 mm  
Working Height: 5.20 mm  
Pitch: 2.54 mm  
Current: 1 Amp  
Contact Resistance: 50 mΩ  
Spring Force: 100g ± 20g



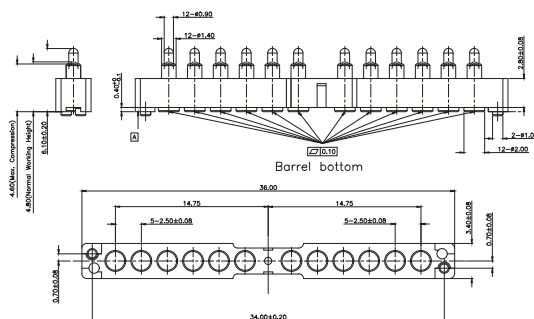
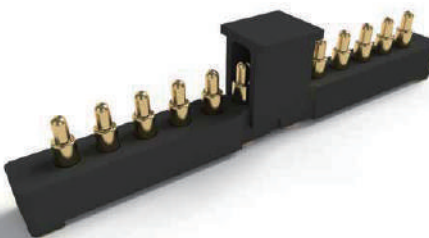
PN: P2879MF01-09F254MR

Length: 7.50 mm  
Working Height: 6.20 mm  
Pitch: 2.54 mm  
Current: 1 Amp  
Contact Resistance: 50 mΩ  
Spring Force: 100g ± 20g



PN: P2976MF01-12A415HR

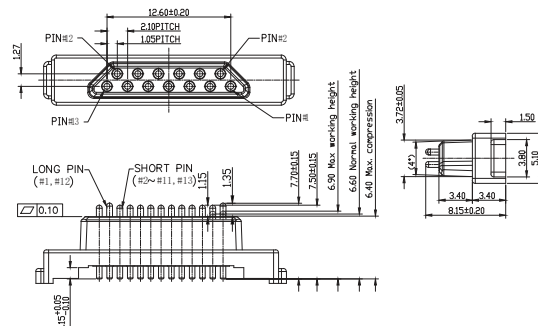
Length: 5.90 mm  
Working Height: 4.70 mm  
Pitch: 3.20 mm  
Current: 2 Amps  
Contact Resistance: 50 mΩ  
Spring Force: 110g ± 20g



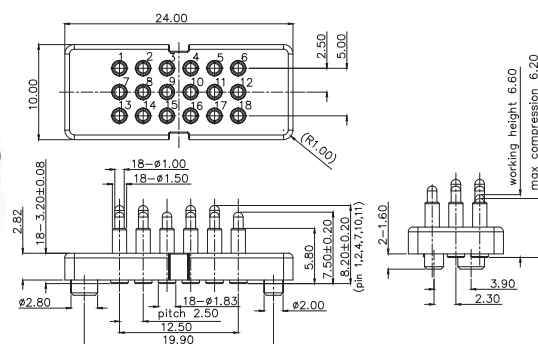
PN: P3303MF01-12A250MR

Length: 6.10 mm  
Working Height: 4.80 mm  
Pitch: 2.50 mm  
Current: 1 Amp  
Contact Resistance: 100 mΩ  
Spring Force: 60g ± 20g

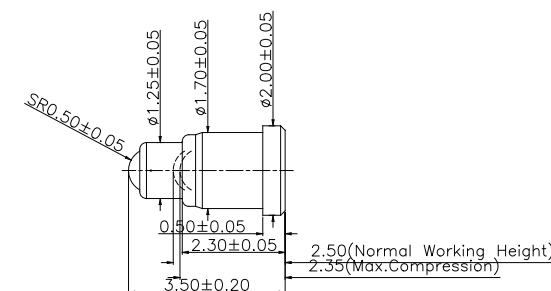
## 12-18 PINS



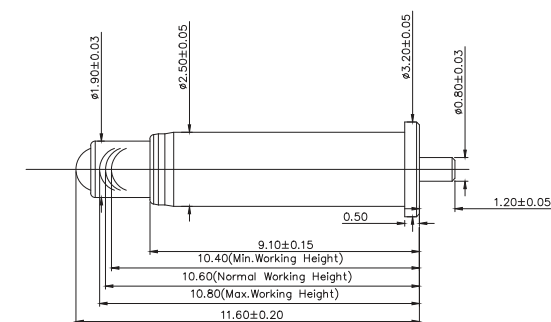
Length:	7.50 / 7.70 mm
Working Height:	6.60
Pitch:	1.05 mm
Current:	2 Amps
Contact Resistance:	50 mΩ
Spring Force:	140g ± 20%



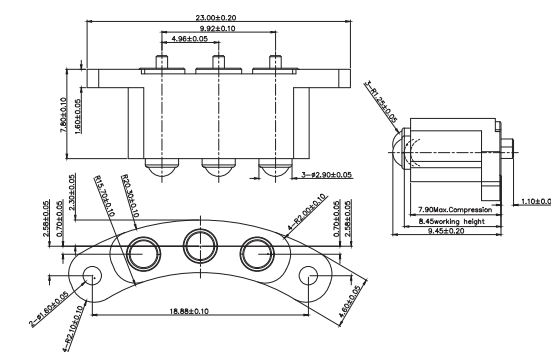
Length:	7.50 / 8.20 mm
Working Height:	6.60 mm
Pitch:	2.50 mm
Current:	1 Amp
Contact Resistance:	50 mΩ
Spring Force:	130g ± 20g



Length:	3.50 mm
Working Height:	2.50 mm
Current:	2 Amps
Contact Resistance:	100 mΩ
Spring Force:	60g ± 15g
Durability:	2,000

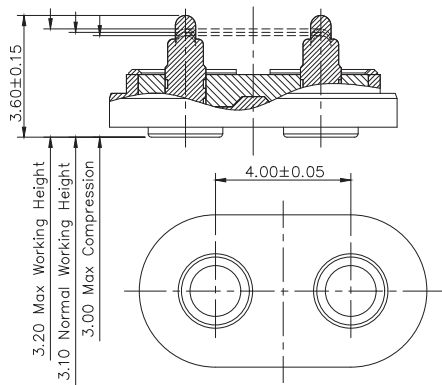


Length:	11.60 mm
Working Height:	10.60 mm
Current:	2 Amps
Contact Resistance:	50 mΩ
Spring Force:	90g±20g
Durability:	10,000



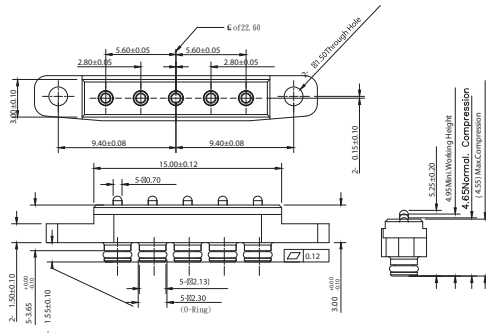
Length:	9.45 mm
Working Height:	8.45 mm
Pitch:	4.96 mm
Current:	1 Amp
Contact Resistance:	100 mΩ
Spring Force:	60g ± 15g
Durability:	200,000

# WATERPROOF CONNECTOR



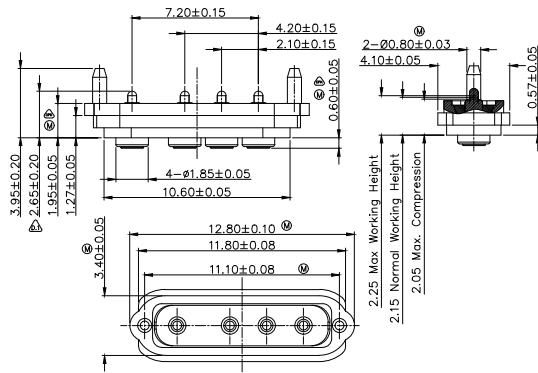
PN: P5562MP01-02B400HB

Length: 3.60 mm  
Working Height: 3.10 mm  
Pitch: 4.00 mm  
Current: 1 Amps  
Contact Resistance: 100 mΩ  
Spring Force:  $80g \pm 20g$   
IP Factor: IPX8



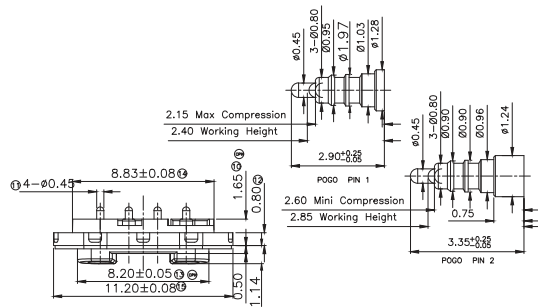
PN: P2352MF01-05A280HT

Length: 5.25 mm  
Working Height: 4.95 mm  
Pitch: 2.80 mm  
Current: 2 Amps  
Contact Resistance: 50 mΩ  
Spring Force:  $95g \pm 20\%$



PN: P5320MF01-04A210HT

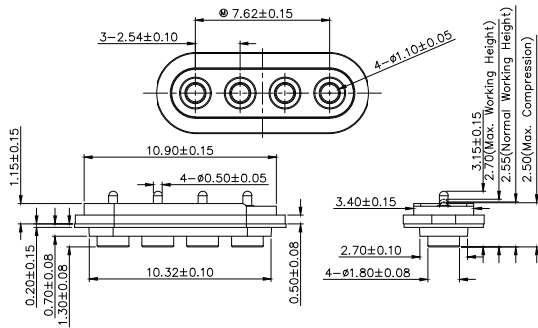
Length: 2.65 mm  
Working Height: 2.15 mm  
Pitch: 2.10 mm  
Current: 1.5 Amps  
Contact Resistance: 50 mΩ  
Spring Force:  $80g \pm 20g$   
IP Factor: IPX7



PN: P2988MM03-04C180HB

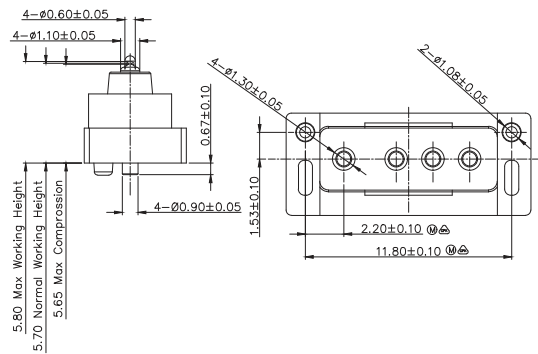
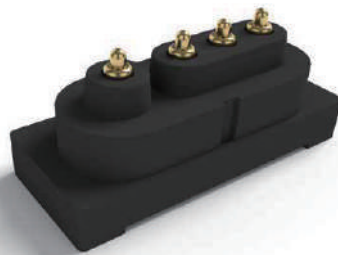
Length: 2.90 / 3.35 mm  
Working Height: 2.40 / 2.85 mm  
Pitch: 1.80 mm  
Current: 1 Amp  
Contact Resistance: 50 mΩ  
Spring Force:  $60g \pm 20g$

# WATERPROOF CONNECTOR



PN: P5875MF01-04A250HT

Length: 3.15 mm  
Working Height: 2.55 mm  
Pitch: 2.54 mm  
Current: 1 Amp  
Contact Resistance: 50 mΩ  
Spring Force:  $75g \pm 20g$   
IP Factor: IPX7

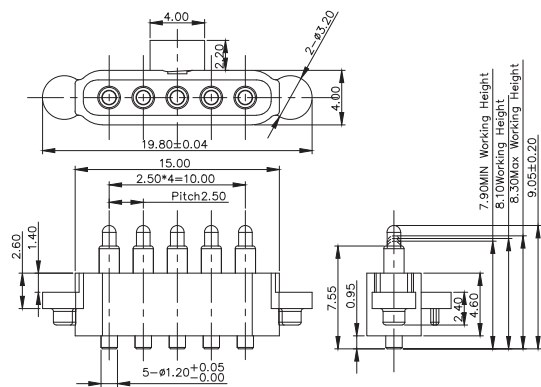


PN: P3613MP05-04A210MR

Length: 6.13 mm  
Working Height: 5.70 mm  
Pitch: 2.10 mm  
Current: 1 Amp  
Contact Resistance: 50 mΩ  
Spring Force:  $50g \pm 15g$



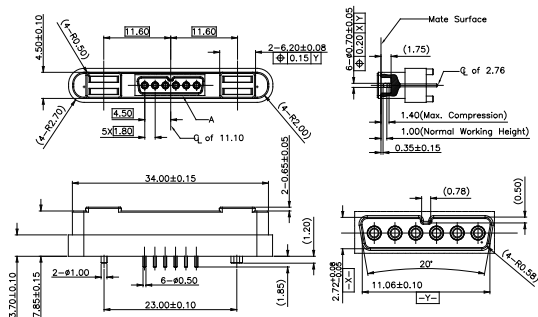
# WATERPROOF CONNECTOR



PN: P3608MP01-05A250MR

- Length: 9.05 mm
- Working Height: 8.10 mm
- Pitch: 2.50 mm
- Current: 2 Amps
- Contact Resistance: 50 mΩ
- Spring Force: 90g ± 20%
- IP Factor: IPX7

# MAGNETIC CONNECTOR

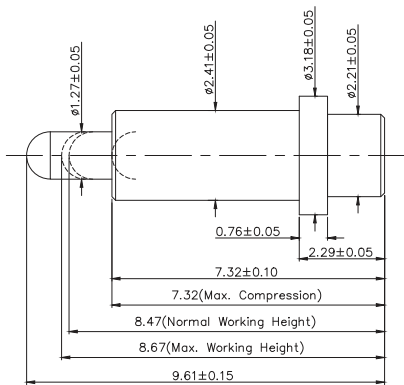


PN: P2578MP01-06C180HT

- Length: 9.70 mm
- Working Height: 8.70 mm
- Pitch: 2.50 mm
- Current: 3 Amps
- Contact Resistance: 50 mΩ
- Spring Force: 70g ± 20g

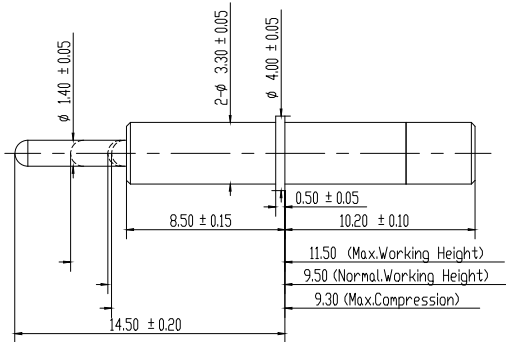
# HIGH CURRENT CONNECTOR

# DOUBLE ENDED PIN



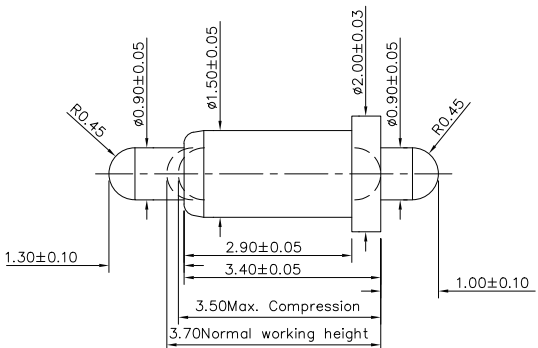
PN: P5650FH01

- Length: 9.61 mm
- Working Height: 8.47 mm
- Current: 9 Amps
- Contact Resistance: 30 mΩ
- Spring Force: 100g ± 20%



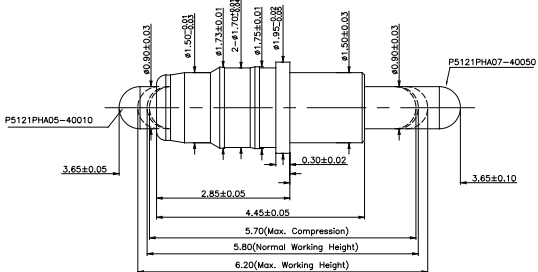
PN: P07408PH1

- Length: 14.50 mm
- Working Height: 9.50 mm
- Current: 12 Amps
- Contact Resistance: 50 mΩ
- Spring Force: 150g ± 20%



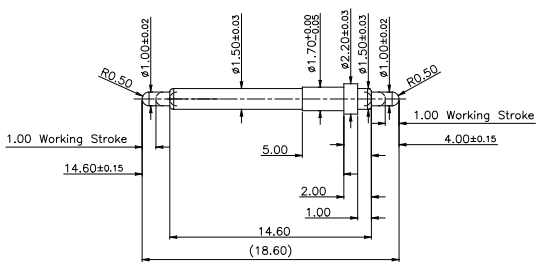
PN: P2573DP01

- Length: 5.70 mm
- Working Height: 3.70 mm
- Current: 1 Amp
- Contact Resistance: 100 mΩ
- Spring Force: 100g ± 20%



PN: P5650FH01

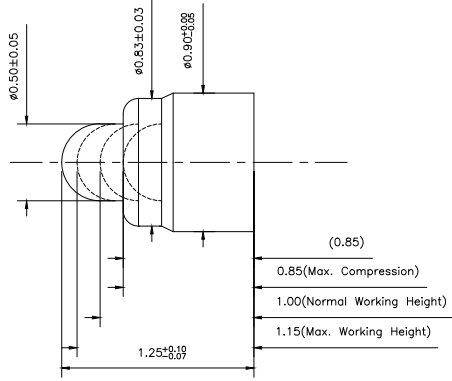
- Length: 7.30 mm
- Working Height: 5.80 mm
- Current: 2 Amps
- Contact Resistance: 30 mΩ
- Spring Force: 85g ± 15g



PN: D406AA01

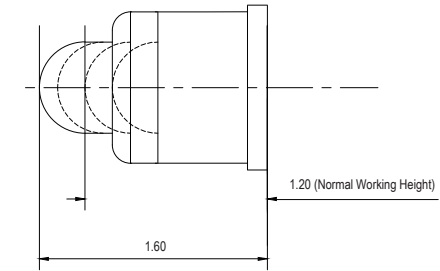
- Length: 18.60 mm
- Working Height: 16.60 mm
- Current: 1 Amp
- Contact Resistance: 100 mΩ
- Spring Force: 60 g ± 20%

ULTRA SMALL  
PIN



PN: P6925FP03

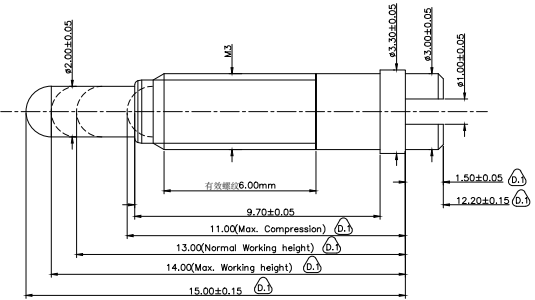
- Length: 1.25 mm
- Working Height: 1.00 mm
- Current: 300m Amp
- Contact Resistance: 100 mΩ
- Spring Force: 35g ± 20%



PN: F254AA01

- Length: 1.60 mm
- Working Height: 1.20 mm
- Current: 300m Amp
- Contact Resistance: 100 mΩ
- Spring Force: 40g ± 20%

SCREW  
PIN



PN: P07417PH1

- Length: 15.00 mm
- Working Height: 13.00 mm
- Current: 1 Amps
- Contact Resistance: 50 mΩ
- Spring Force: 250g ± 20%



Testing Items

Environmental

- Waterproof
- Humidity Test
- Salt Spray
- Thermal Impact
- Resistance to Solder Heat
- Vibration

Electrical

- Contact Resistance
- Insulation
- HIPOT
- Rated Current

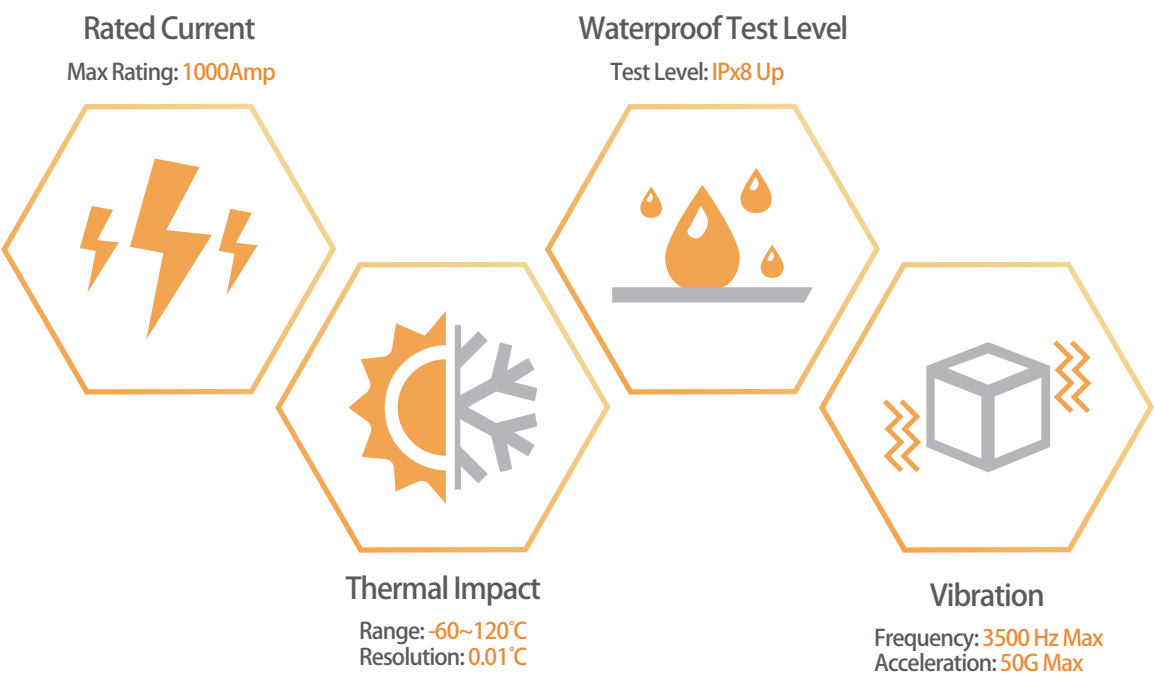
Mechanical

- Retention Force
- Life Cycle
- Vibration
- Mechanical Shock

Other

- Drop
- Soldering Side Force
- Solderability

Testing Equipment



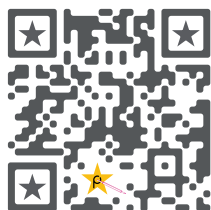
- ISO 9001  
Quality Management Systems
- ISO 13485  
Medical Devices - Quality Management Systems
- ISO 14001  
Environmental Management Systems
- ISO 14064  
Greenhouse Gas Emission
- ISO 45001  
Occupational Health and Safety Management System
- IATF 16949  
Automotive Quality Management Systems
- QC 080000  
Hazardous Substance Process Management

Quality Assurance





C.C.P. CONTACT PROBES



**Fujian HQ**  
+86-595-85169363

**Dongguan**  
+86-769-85151668

**Beijing**  
+86-10-53856584

**Hanoi**  
+84-3464-73680

**Shanghai**  
+86-186-2118304

**San Jose**  
+1-408-6068151

**Shenzhen**  
+86-755-82794229

**Frankfurt**  
\*

**Chengdu**  
+86-28-87440813

**Singapore**  
\*

**Chongqing**  
+86-185-89096930

**Taipei HQ**  
+886-2-29612525

**Bangalore**  
+91-9421568113

**Kunshan**  
+86-512-57378981

**Kaohsiung**  
+886-7-3601161

**Tokyo**  
+81-3-52957090

**Wuhan**  
+86-139-73919421

**Zhubei**  
+886-3-5506368

**Seoul**  
+82-70-75432531

**Hong Kong**  
+852-23014671

\* Please contact our headquarters at:  
[www.ccpcontactprobes.com](http://www.ccpcontactprobes.com)  
[ccp\\_service@pccp.com.tw](mailto:ccp_service@pccp.com.tw)