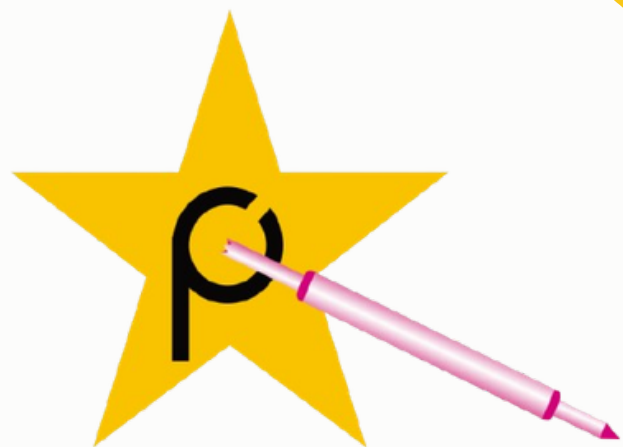


# **C.C.P. CONTACT PROBES CO., LTD.**

## **Introduction of**

- 1.PSG Coating (Plating)
- 2.Ball Point Rolling Pin Connector
- 3.Integrated Blade and Pogo Pin Connector



## What is PSG Plating



**PSG plating** is a high-performance surface treatment solution developed with innovative material technology, designed to outperform and replace conventional gold plating.

While maintaining excellent electrical conductivity and reliable contact performance, PSG plating significantly reduces raw material costs, effectively minimizing the burden of fluctuating gold prices.

With a precision-controlled manufacturing process, it ensures stable performance and long-term durability, making it a cost-effective solution for advanced electronic devices and connector applications.



The PSG coating has a gold appearance, consistent with typical gold plating, and is produced using a nickel-free process.



# Why PSG Plating Outperforms Gold Plating



- ✓ • **A Smarter Alternative to Gold**  
Engineered to replace traditional gold plating without compromising performance.
- ✓ • **Dramatically Lower Cost**  
Achieves substantial cost savings by reducing dependence on expensive gold materials.
- ✓ • **Stable Against Gold Price Volatility**  
Eliminates the risk and uncertainty associated with fluctuating gold prices.
- ✓ • **High Conductivity, Proven Performance**  
Delivers excellent electrical conductivity with reliable, consistent contact behavior.
- ✓ • **Long-Lasting Reliability**  
Designed for durability, ensuring extended product lifespan and reduced maintenance.
- ✓ • **Precision-Engineered for Consistency**  
Advanced manufacturing ensures uniform quality across every application.
- ✓ • **Built for Next-Generation Electronics**  
Perfectly suited for high-performance connectors and cutting-edge electronic devices.
- ✓ • **Drive More Value, Without Trade-offs**  
Achieve both performance and cost efficiency—no compromise required.

## Gold Price Trend in Recent Years



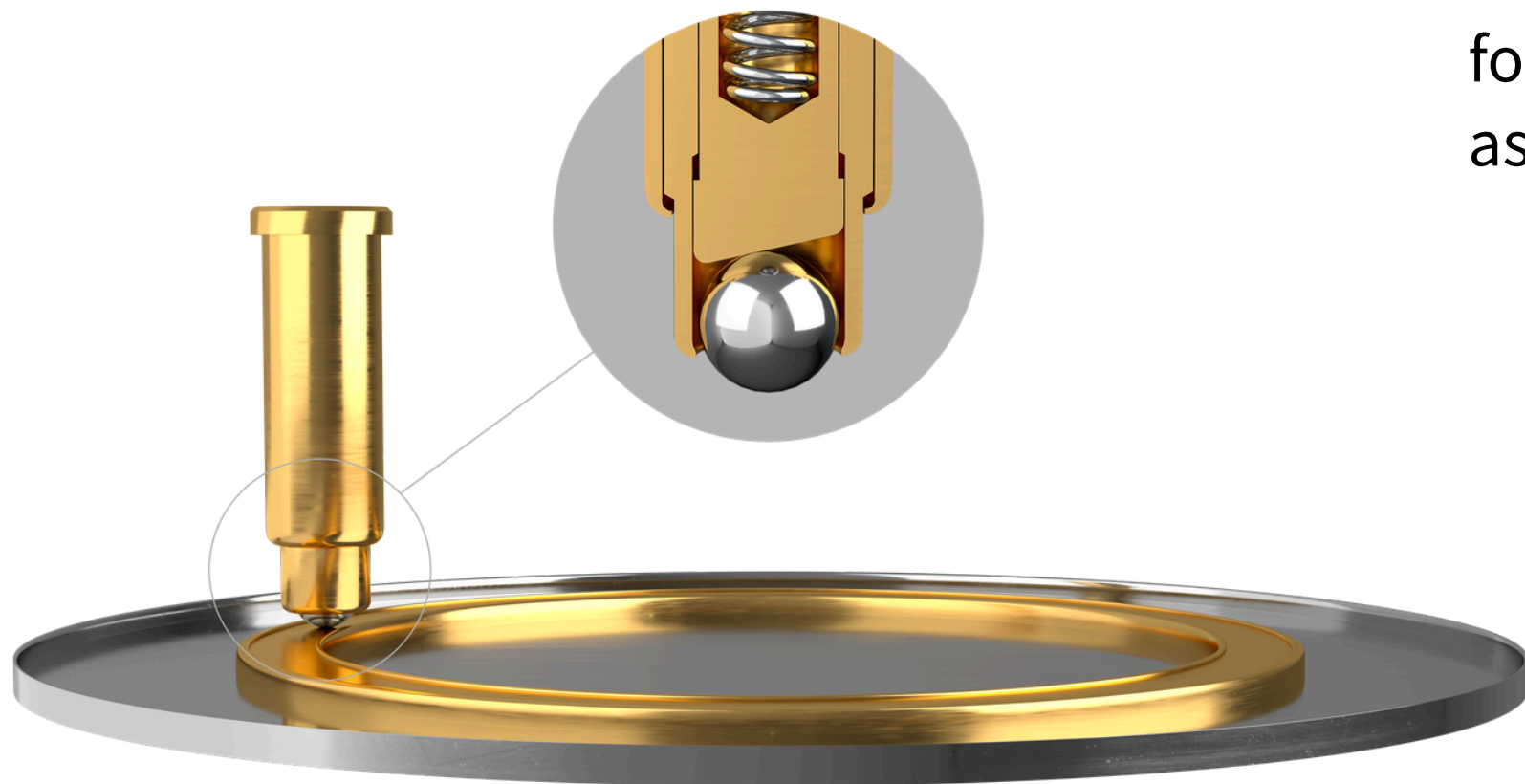
Gold prices have risen significantly from 2021 to 2026, with demand expected to grow further. In response, we developed PSG plating technology—a cost-effective alternative that reduces reliance on gold while maintaining high performance, positioning us at the forefront of the industry and earning strong market recognition.

# What is Ball Point Rolling Pin Connector

## **Ball Point Rolling Pin Connector**

is a high-reliability interconnect solution that combines a spring-loaded pin structure with a rolling ball contact design. The spherical contact tip reduces friction and wear during operation while ensuring stable electrical conductivity.

Compared to conventional pogo pins, this design is especially suitable for applications requiring rotation, sliding, or multi-angle contact, such as monitor hinges and other dynamic connection systems.

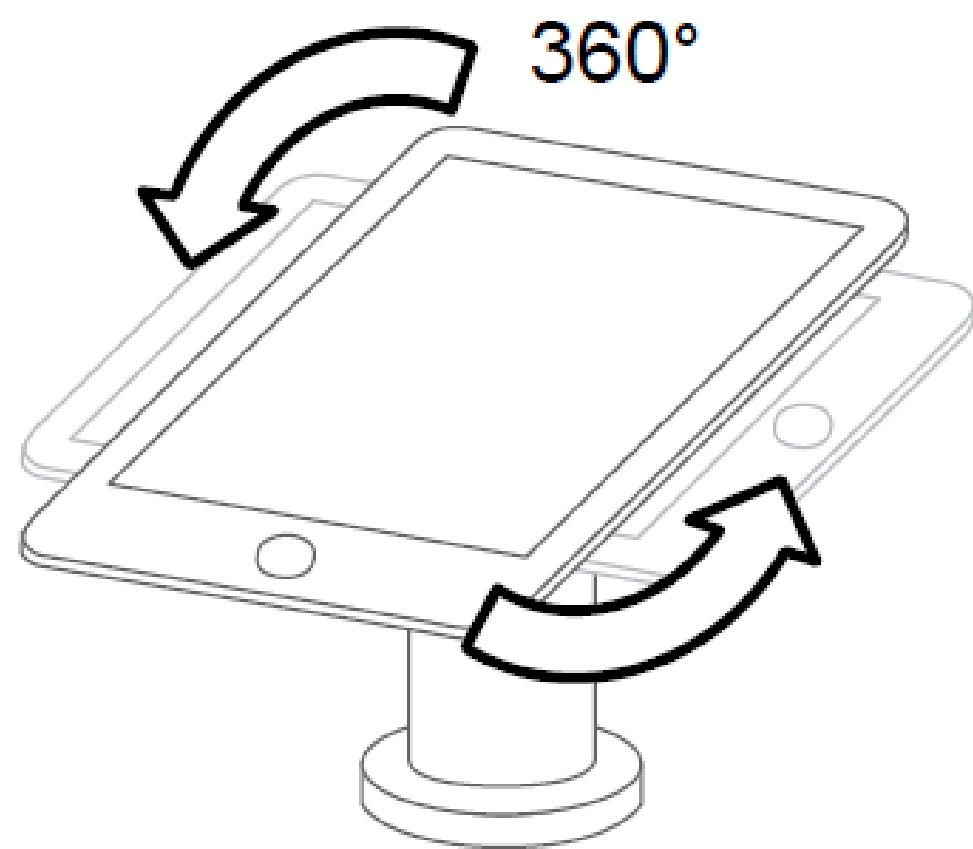


## Why Ball Point Rolling Pin Connector

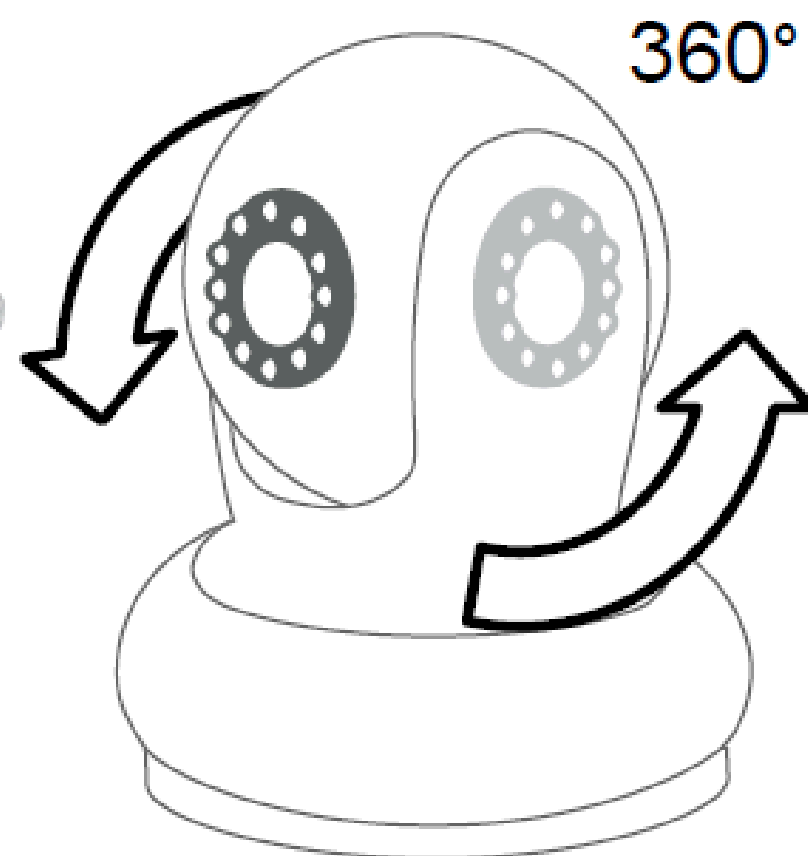
- ✓ • **360° Rotational Capability**  
Ideal for rotating devices such as monitor hinges and swivel displays
- ✓ • **Low Friction, Reduced Wear**  
Rolling ball structure minimizes abrasion and extends lifespan
- ✓ • **Stable Electrical Performance**  
Maintains consistent and reliable conductivity over time
- ✓ • **High Durability**  
Designed for high cycle life and repeated motion applications
- ✓ • **Tolerance-Friendly Design**  
Accommodates misalignment and mechanical variation

# Typical Product Application

## Product Display



## Camera



Rotatable monitors / display hinges  
Foldable or swivel electronic devices  
Wearable electronics (e.g., smartwatches)  
Industrial dynamic connection modules

**Compression :** 10,000 times  
**Lateral Movement:** 25,000,000 mm  
**Resistance:** 100 mOhm  
**Current:** 1.5 A

# What is Integrated Blade and Pogo Pin Connector

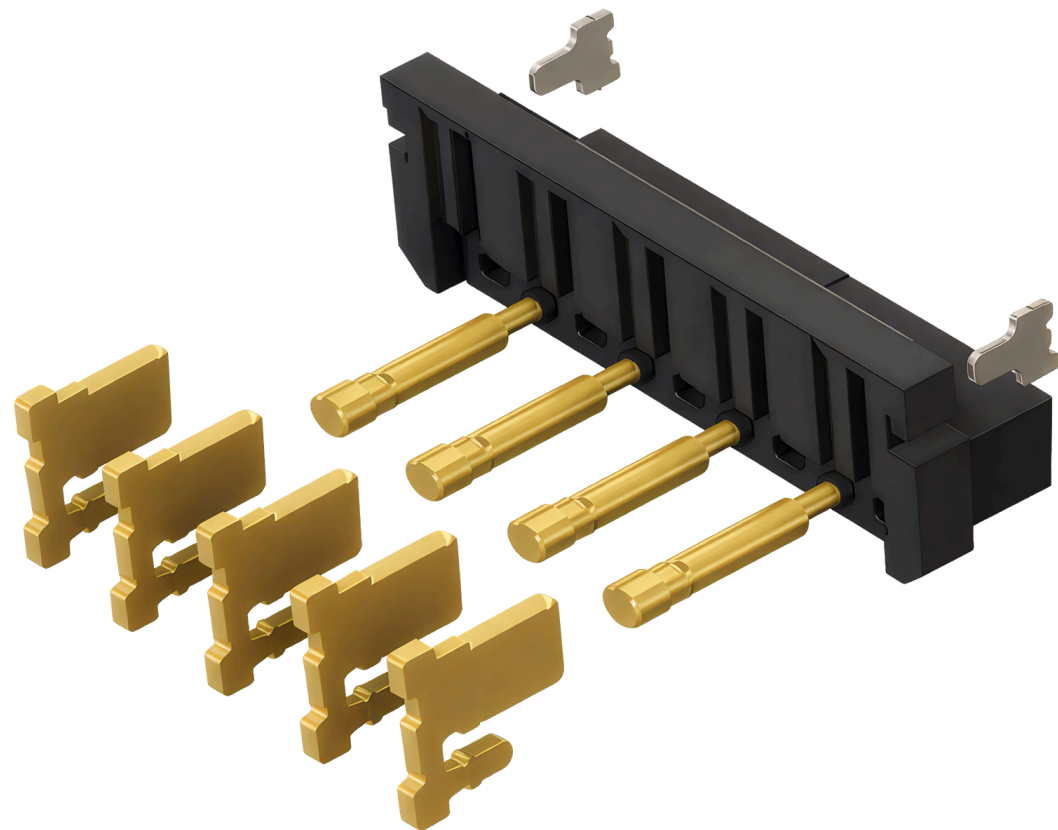
## **Integrated Blade and Pogo Pin Connector**

is an innovative interconnect solution that combines blade contacts and spring-loaded pogo pins within a single connector.

This hybrid design leverages the strengths of both technologies: blade contacts provide high-current power transmission, while pogo pins ensure reliable signal transmission and mechanical compliance, enabling both power and signal integration in one compact interface.

Optimized design for extreme environments involving high current and frequent attachment/detachment/vibration

Applicable to various fields such as ESS, EV batteries, and home robots



## Why Integrated Blade and Pogo Pin Connector

- ✓ • **Power & Signal Integration**  
Combines high-current and signal transmission in one connector
- ✓ • **High Current Capability (Blade Contacts)**  
Ideal for power delivery applications
- ✓ • **Reliable Contact with Compliance (Pogo Pins)**  
Absorbs tolerance, vibration, and misalignment
- ✓ • **Space-Saving Design**  
Reduces connector count and simplifies system architecture
- ✓ • **Improved System Reliability**  
Minimizes connection failure risks
- ✓ • **Optimized for Compact & Modular Designs**  
Supports modern, space-constrained applications

## Typical Product Application

- Laptops and tablet docking modules
- Docking stations
- Industrial modular equipment
- Automotive electronics
- Servers and high-power systems
- Consumer electronics requiring both power and signal transfer



One Connector. Power + Signal. Simplified.